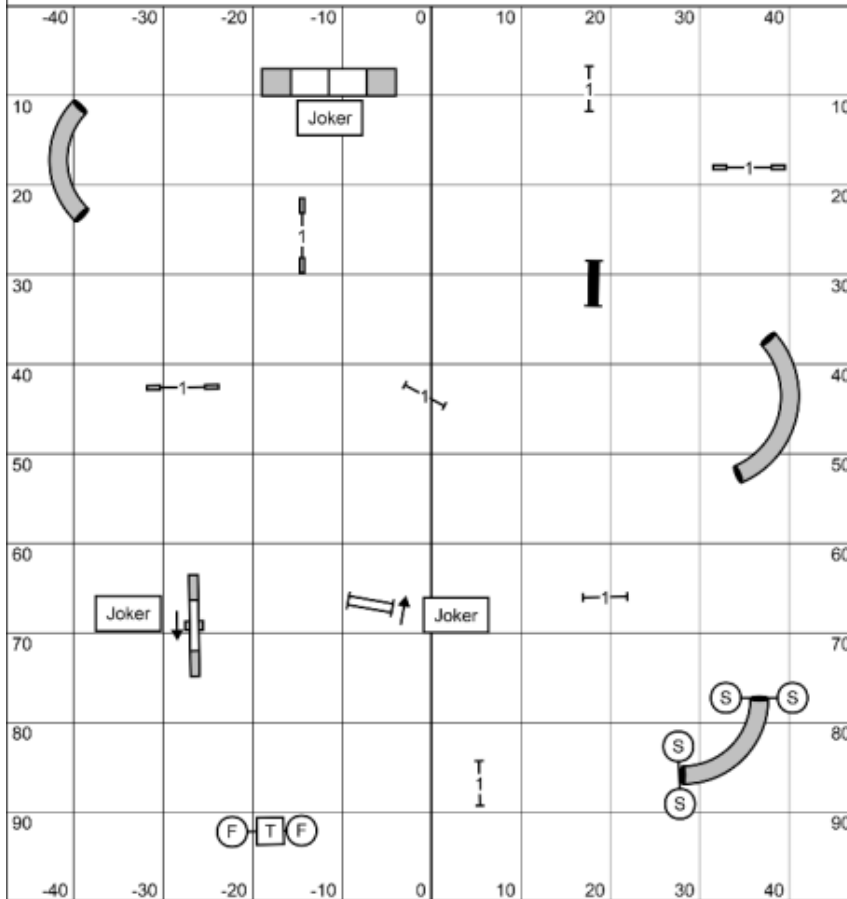


# SUNDAY

## FullHouse Levels 1, 2, 3, 5 & C



### FULLHOUSE - BRIEFING

The startline is bi-directional.  
FullHouse is a point accumulation game.  
You earn points by successfully completing obstacles.

**Point Values**  
Single Bar Jumps = 1 Point  
Panel Jump, Tunnels = 3 Points  
Jokers = 5 Points

In addition to earning the minimum points for your Level, teams must also do the following "required obstacles":

**Required Obstacles:**  
Three (3) 1-Point Obstacles (Single Bar Jumps)  
Two (2) 3-Point Obstacles (Tunnels, Panel Jump)  
One (1) 5-Point Obstacle (Jokers)

\* Note: Obstacles may only be taken twice for points. Doing an obstacle back to back is allowed, but must be done safely.

### Qualifying:

- Complete the "required obstacles".
- Earn enough points for your level (see below)
- Do so in the allotted time (see below)

\* Note: The Table is live at all times and will end your run, even if your dog accidentally goes to it. You can also go to table at any time to stop the clock. Point accumulation will stop after the horn sounds. Teams then have 5 seconds to get to the table, after which you will lose 1 point for every full second over time.

### Total Points Needed by Level

Regular and Veterans  
L1 19 Points  
L2 21 Points  
L3 23 Points  
L5C 25 Points

Enthusiast Specialist - 2 points less at each level

### TIMES:

Large dogs (16, 20, 24) - 35 sec  
Small dogs (4, 8, 12) - 40 sec  
\* Note: 16 inch vets jumping 12 get big dog time.

Enter / Exit

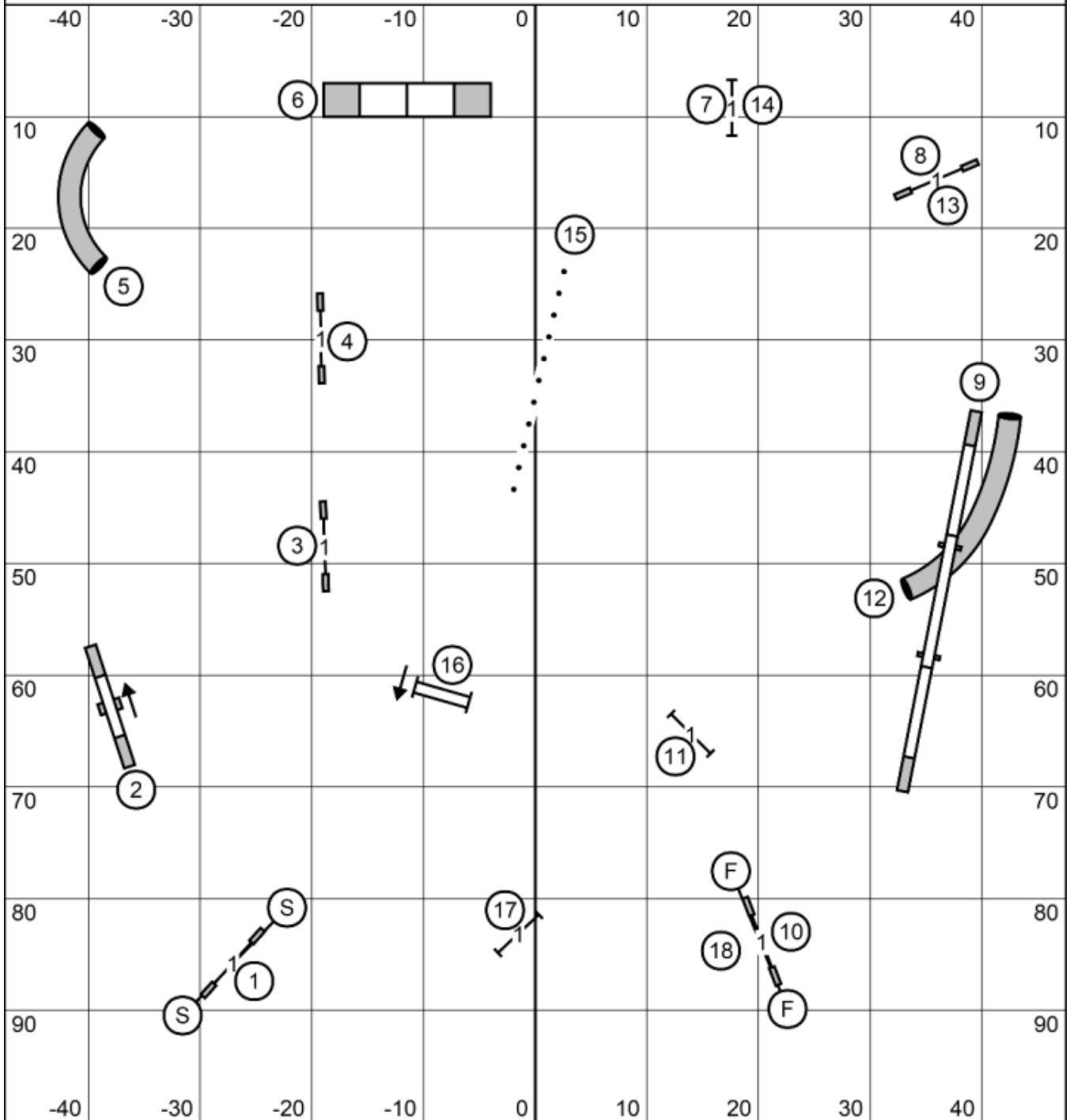
FullHouse Levels 1, 2, 3, 5 & C  
Judged by: Dan Roy  
Sunday, June 21, 2026  
Top Dog Club  
Olympia, WA

Enter / Exit

CourseDevline.com 100 vt.311

**SUNDAY**

**Standard Levels 5 & C**



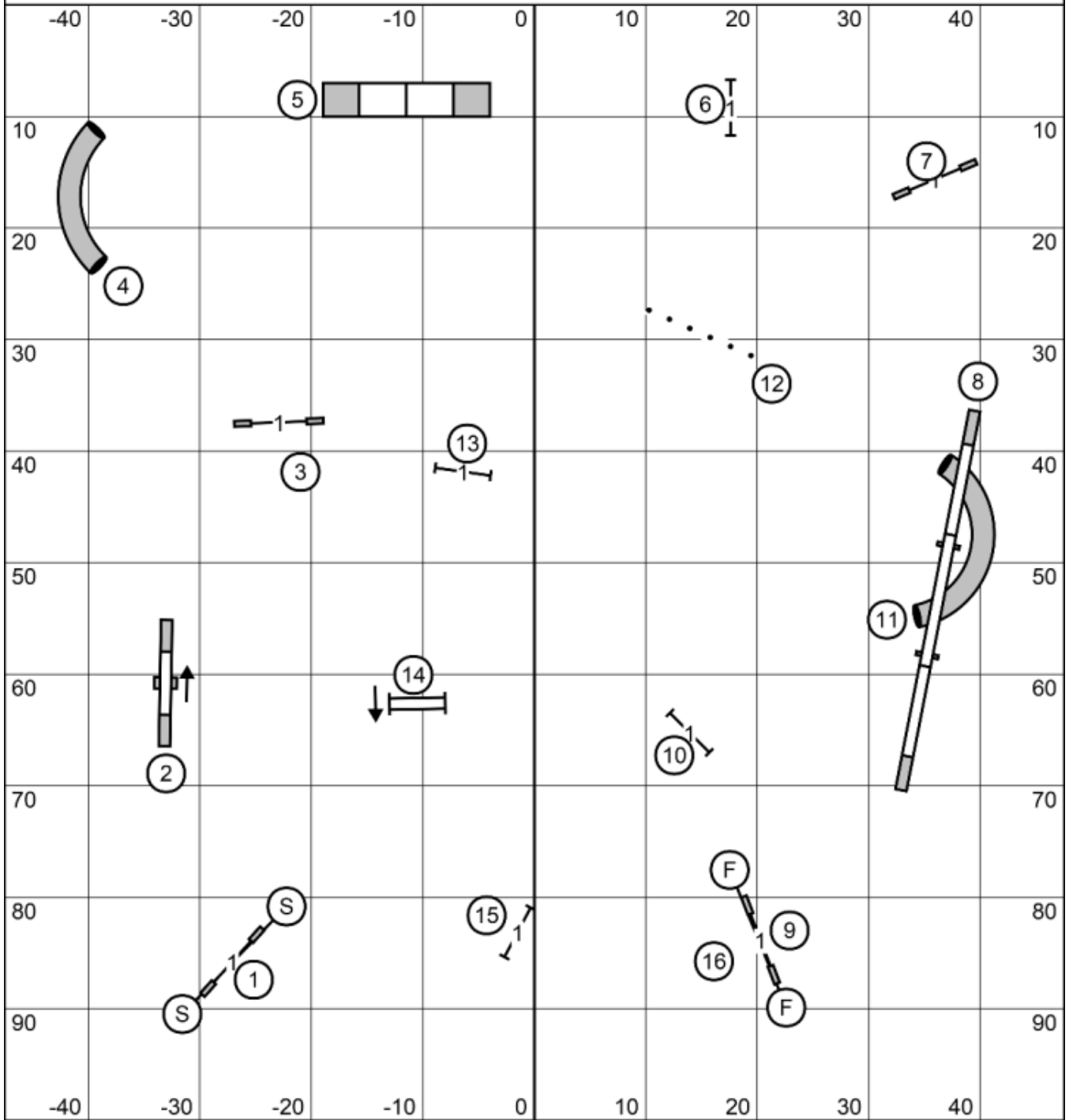
Enter / Exit

Standard Levels 5 & C  
Judged by: Dan Roy  
Sunday, June 21, 2026  
Top Dog Club  
Olympia, WA

Enter / Exit

**SUNDAY**

**Standard Levels 2 & 3**



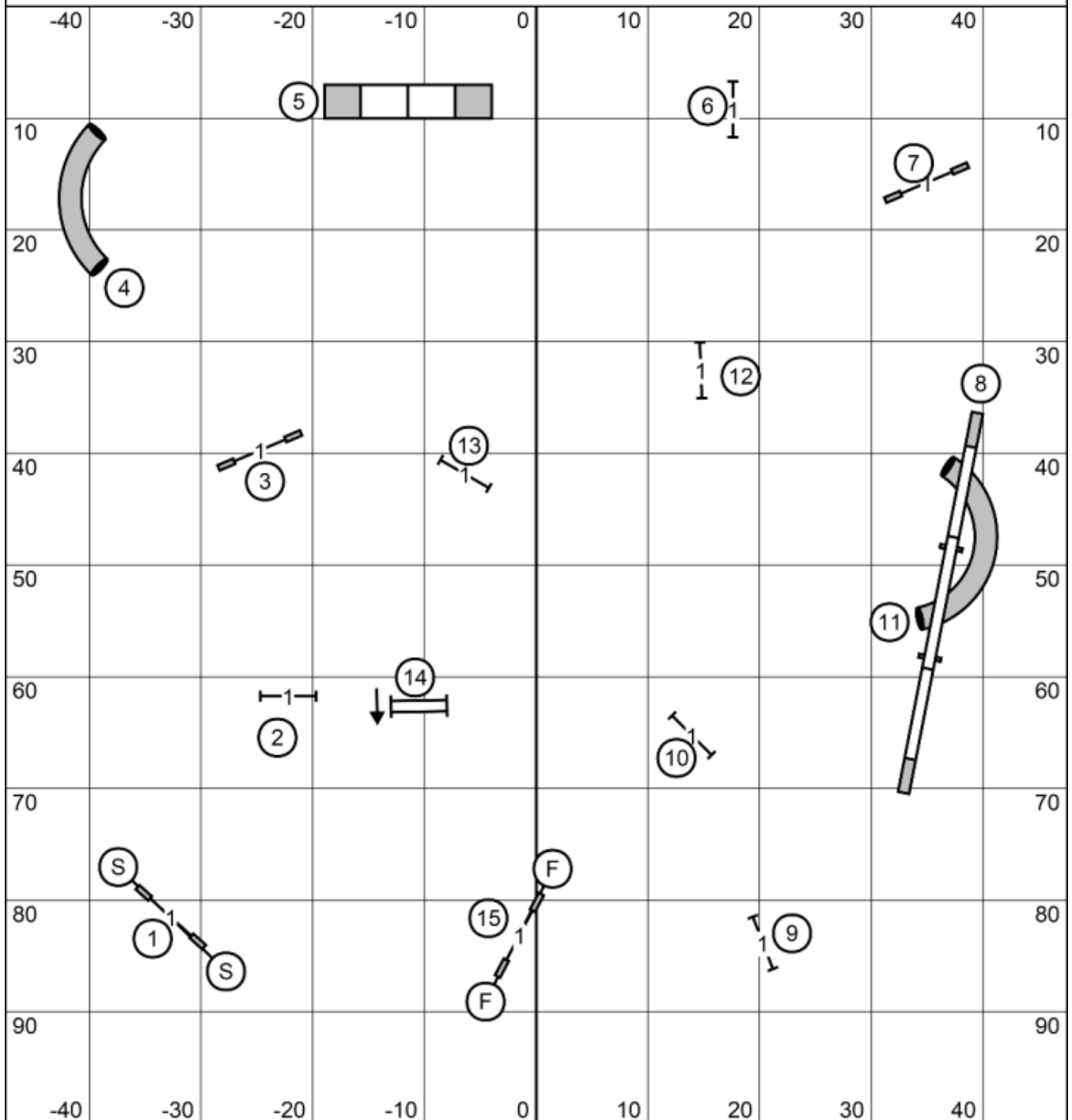
Enter / Exit

Standard Levels 2 & 3  
Judged by: Dan Roy  
Sunday, June 21, 2026  
Top Dog Club  
Olympia, WA

Enter / Exit

# SUNDAY

## Standard Level 1



Enter / Exit

Enter / Exit

Standard Level 1  
Judged by: Dan Roy  
Sunday, June 21, 2026  
Top Dog Club  
Olympia, WA

# SUNDAY

## Snooker Levels 3, 5 & C

Enter / Exit

Enter / Exit

Snooker Levels 3, 5 & C  
 Judged by: Dan Roy  
 Sunday, June 21, 2026  
 Top Dog Club  
 Olympia, WA

**SNOOKER BRIEFING**

**Opening**

- Do 3 Red/Number Combinations: Red/Number, Red/Number, Red/Number
- There is a 4th Red in case you knock a Red
- All obstacles are bi-directional in the opening, including the start. The combo obstacles may be done in any order. Once you start a combo then need to attempt all parts of the combo.

**Closing**

- Do 2 through 7 in order, as labeled
- #2 is bi-directional
- Finish Obstacle is live and will end your run

Only declared training is allowed in Snooker. If at any time you hear the judge's whistle or "thank you" then your run is over. Go do the finish obstacle to stop the clock. The finish obstacle must be done, otherwise NO TIME.

LEVEL	POINTS NEEDED
Level 1	26
Level 2	28
Level 3	30
Level 5C	32

Enthusiast/Specialist - 2 points less at each level

TIMES:

Large dogs (16, 20, 24) - 55

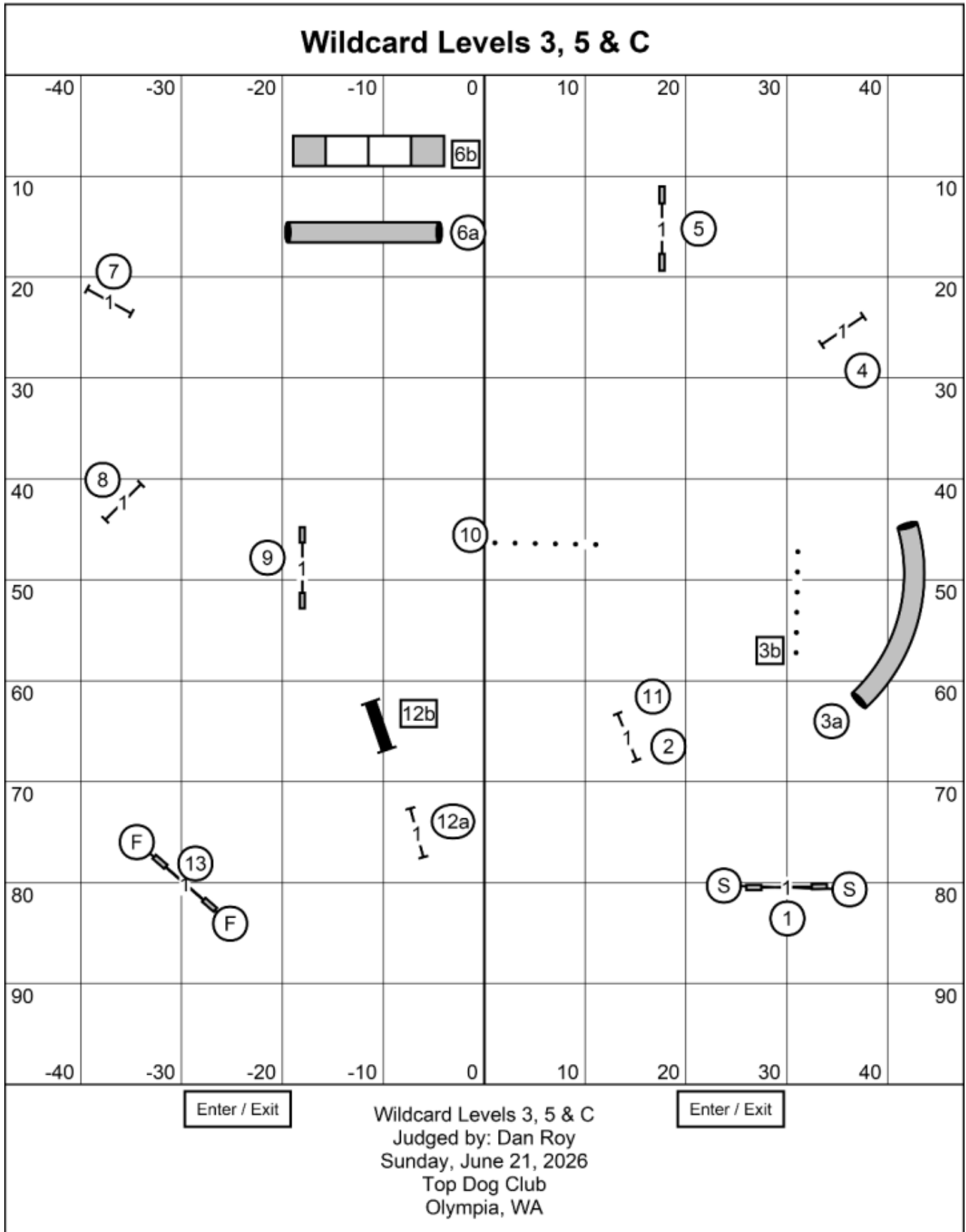
Small dogs (4, 8, 12) - 60

\* Note: 16 inch vets jumping 12 get big dog time.

CourseDev.com ICD v1.341



**SUNDAY**



**SUNDAY**

