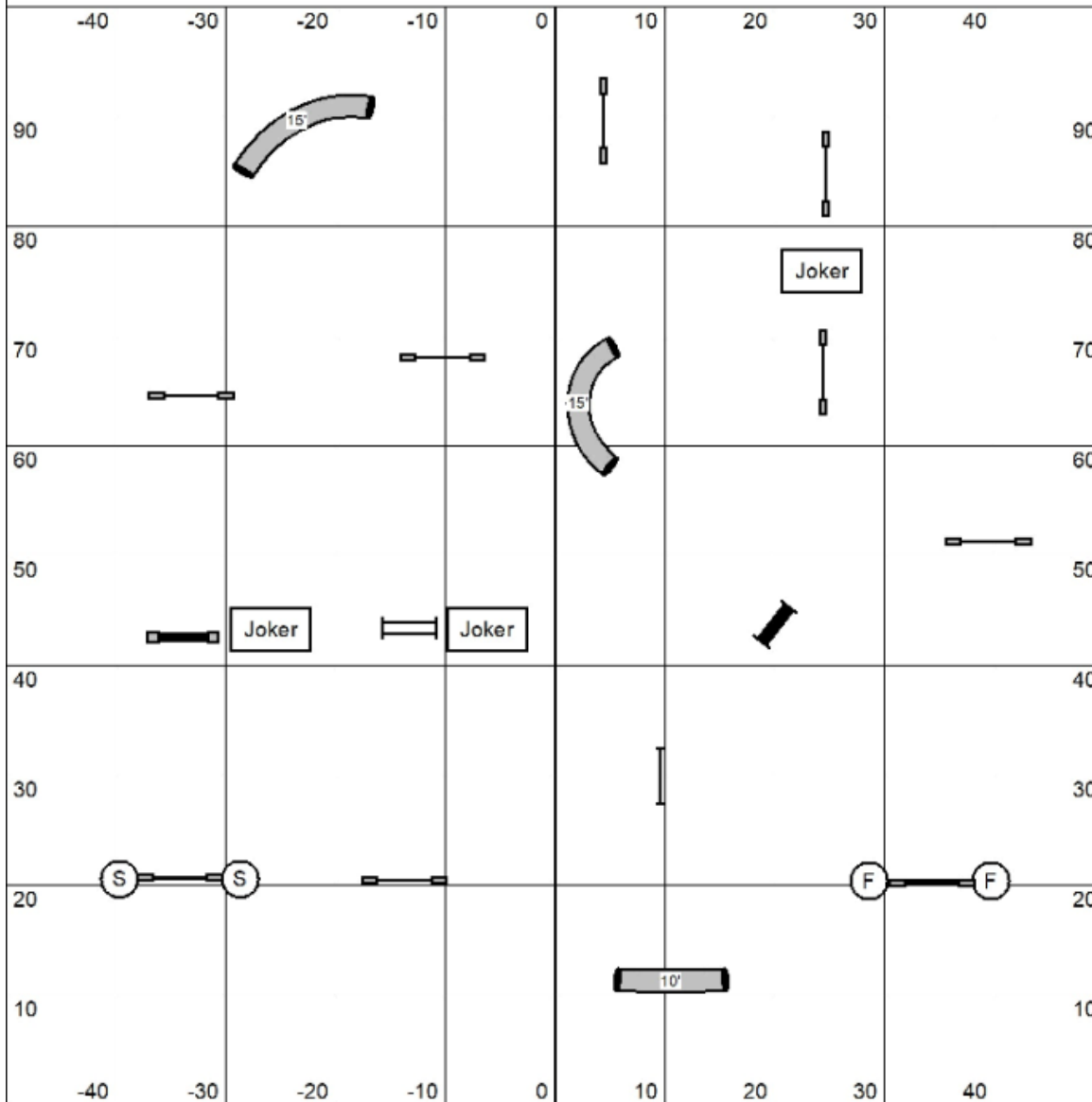


FullHouse 1235C



Start line is bidirectional and worth 1 point
 Jokers worth 5 points
 Tunnels, panel worth 3 points
 Jumps worth 1 point
 need 3 single jumps, 2 tunnels or panels and 1 joker and enough points to qualify.
 Obstacles may be used twice for points.
 1 point will be taken off of your score for every second your dog is over time.

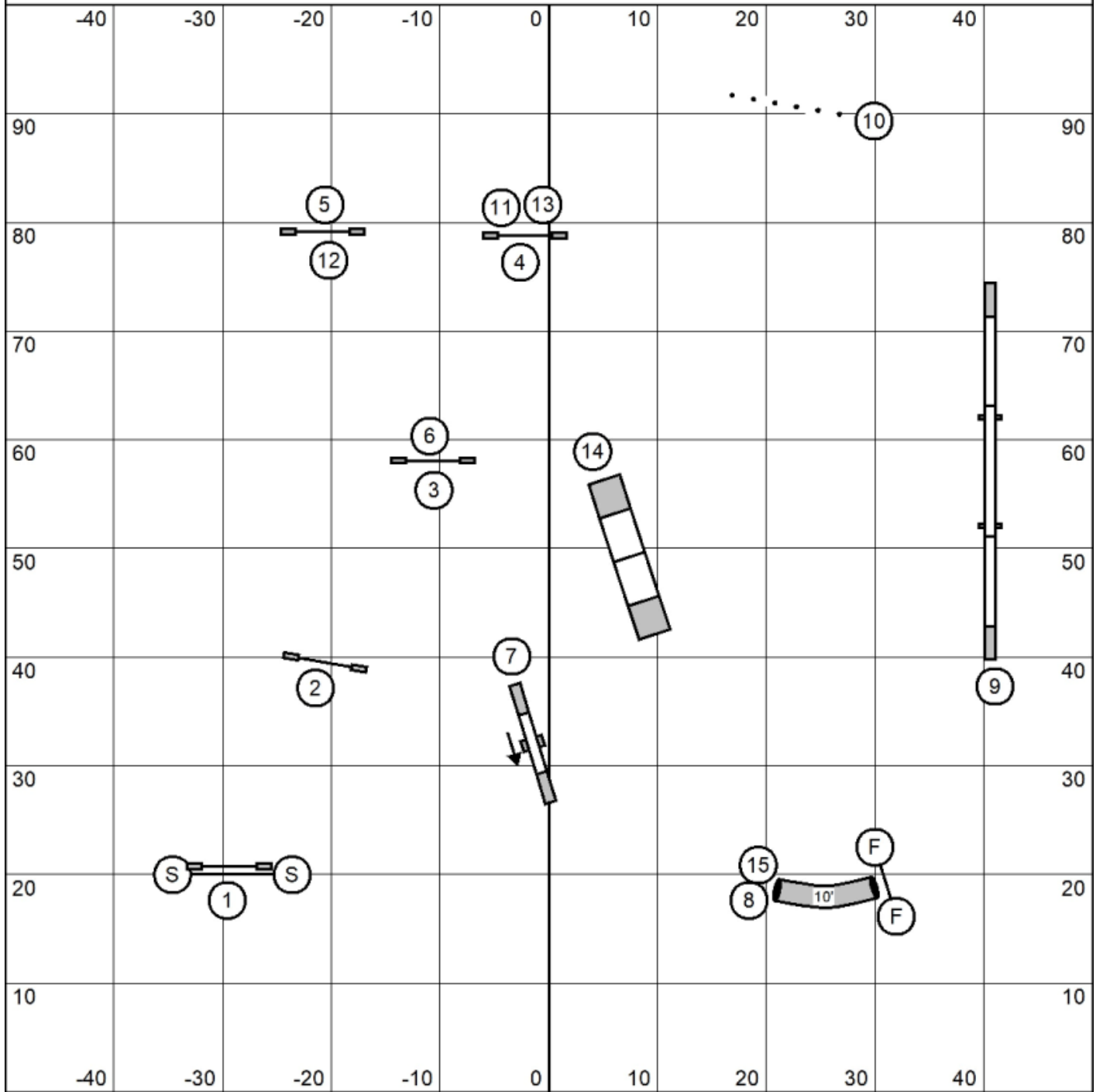
Finish jump is live at all times, bidirectional and is worth 0 points.

Reg/Vet	Enth/Spec
Level 1 19 points	17 points
Level 2 21 points	19 points
Level 3 23 points	21 points
Level 5C 25 points	23 points

Point Accumulation Time/Total Game Time		
4"/8"/12"	40 seconds	45 seconds
16"/20"/24"	35 seconds	40 seconds

FullHouse All Levels
 Judged by: Carol Thom
 May 17, 2026
 SoBAD
 Stephentown, NY

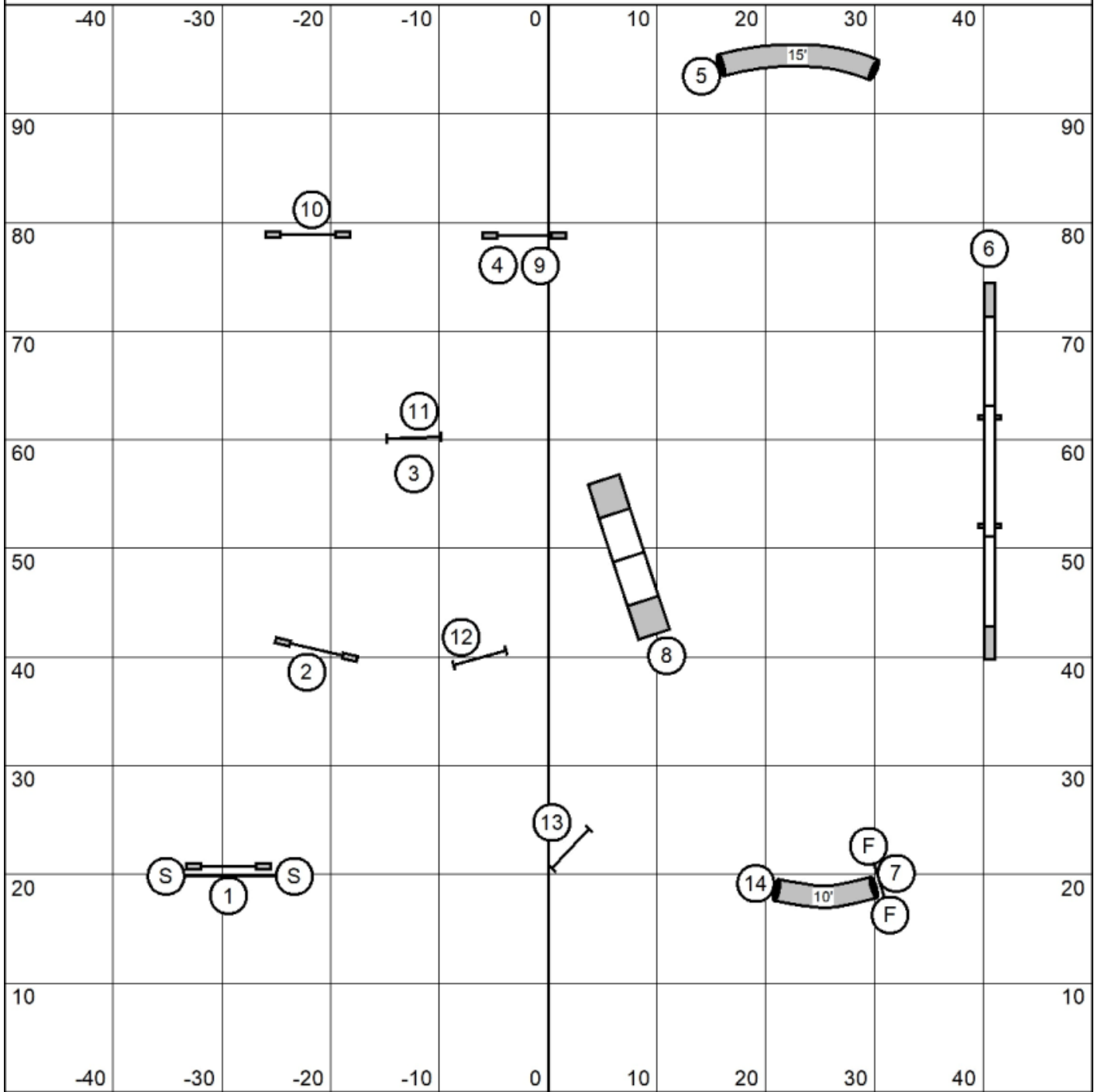
Standard 23



Next dog in at 14

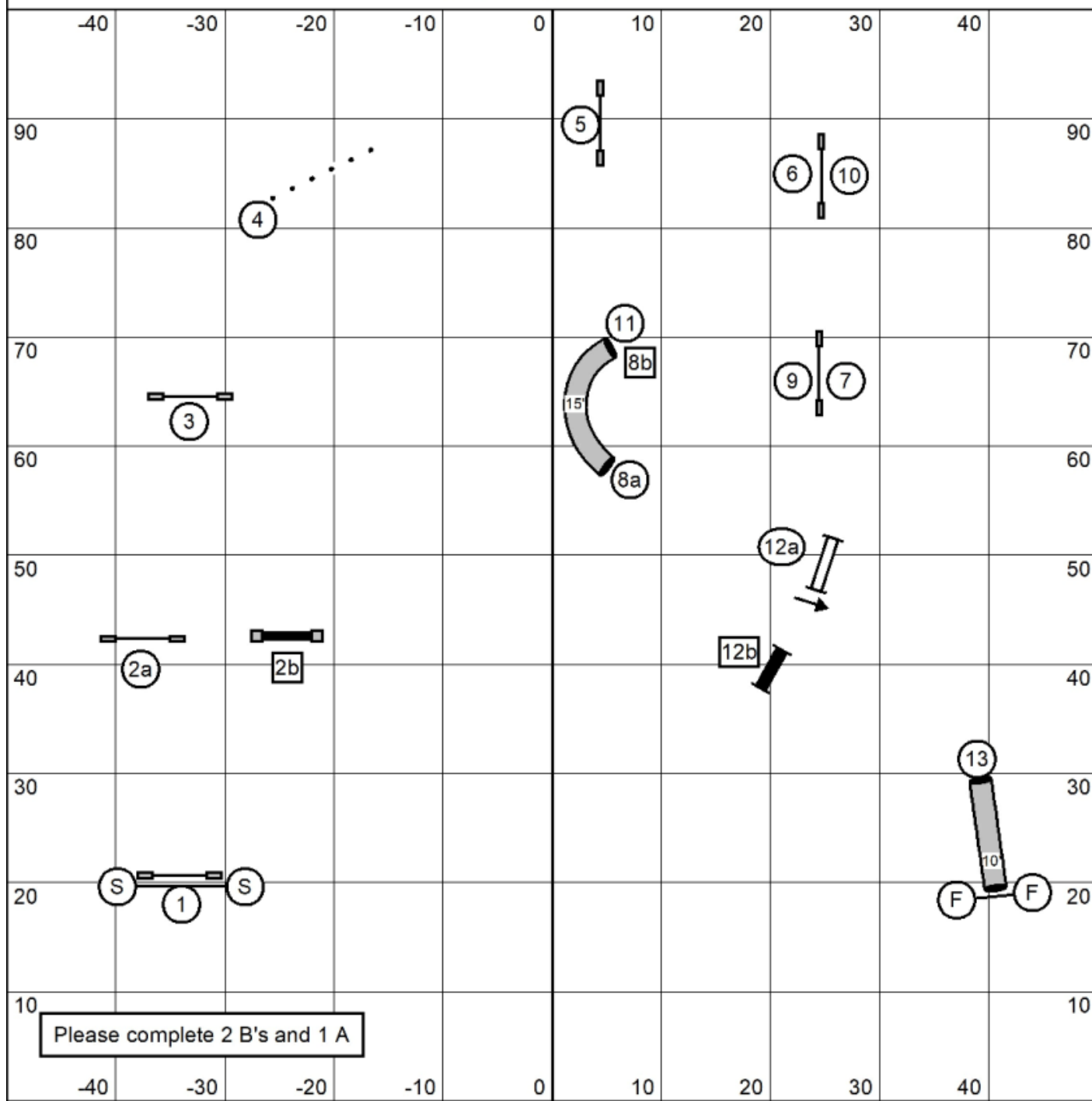
Standard Levels 2 & 3
 Judged by: Carol Thom
 May 17, 2026
 SoBAD
 Stephentown, NY

Standard 1



Standard Level 1
Judged by: Carol Thom
May 17, 2026
SoBAD
Stephentown, NY

Wildcard 35C

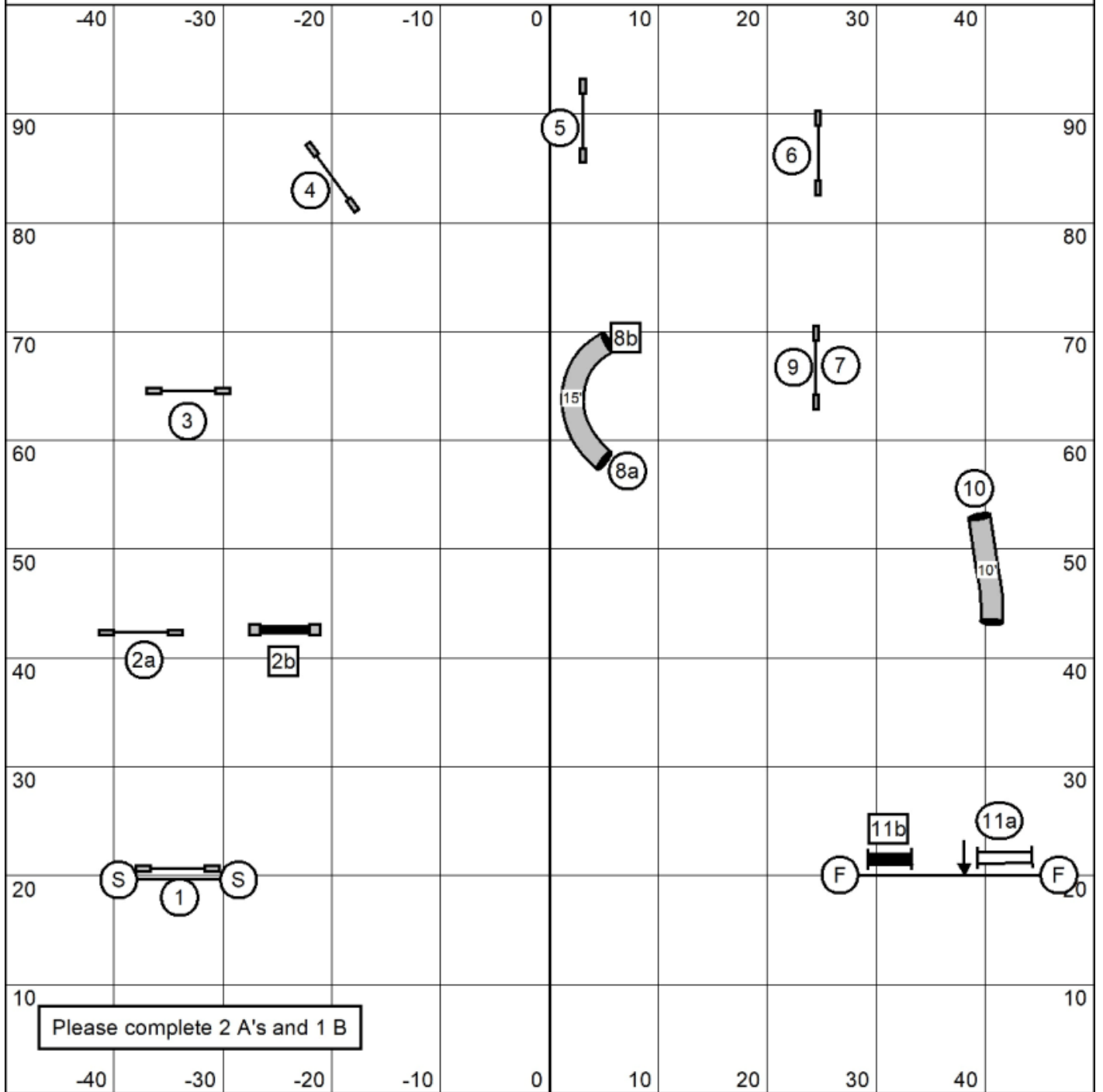


Please complete 2 B's and 1 A

Next dog in at 12

Wildcard Levels 3,5 & C
 Judged by: Carol Thom
 May 17, 2026
 SoBAD
 Stephentown, NY

Wildcard 12

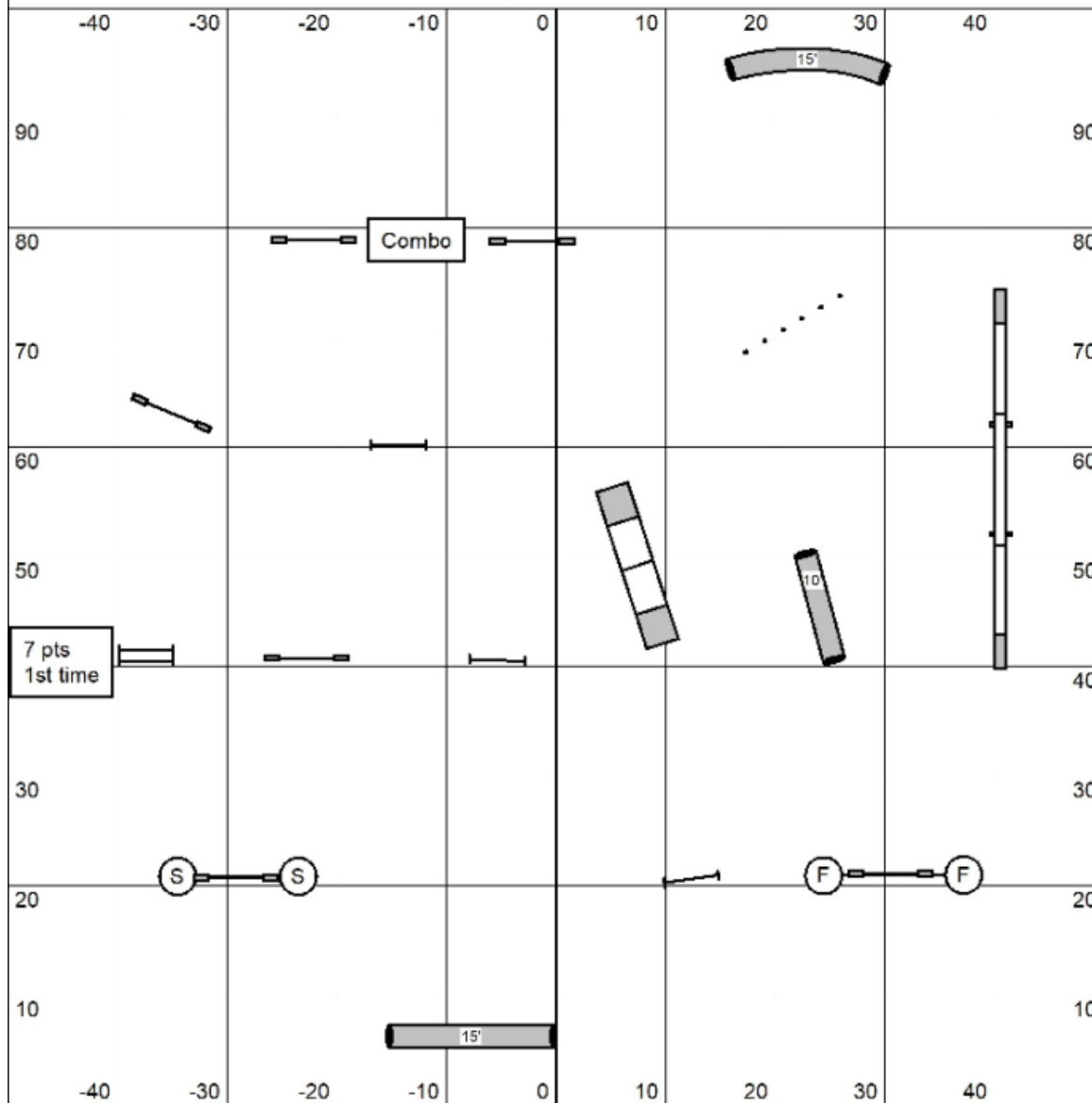


Please complete 2 A's and 1 B

Next dog in at 10

Wildcard Levels 1 & 2
 Judged by: Carol Thom
 May 17, 2026
 SoBAD
 Stephentown, NY

Jackpot 1235C



333

The startline is bidirectional. In the opening your dog can gather points, everything has a point value up to 2x. When the horn sounds, all the obstacles reset and the finish jump is live and your dog can continue to collect points on your way to the finish jump. Every time your dog completes a 3 point obstacle they will receive triple the value(9) all other obstacles will be their regular value. The double is considered a 3 point obstacle in the closing

Dogwalk, Aframe and Combo are worth 5 points
Tunnels, weaves and double are worth 3 points-The Bidirectional double jump is worth 7 points the first time performed and 3 points the 2nd time.
Jumps are worth 1 point.

The Finish jump is worth 5 points at the end of the run if the bar stays up.

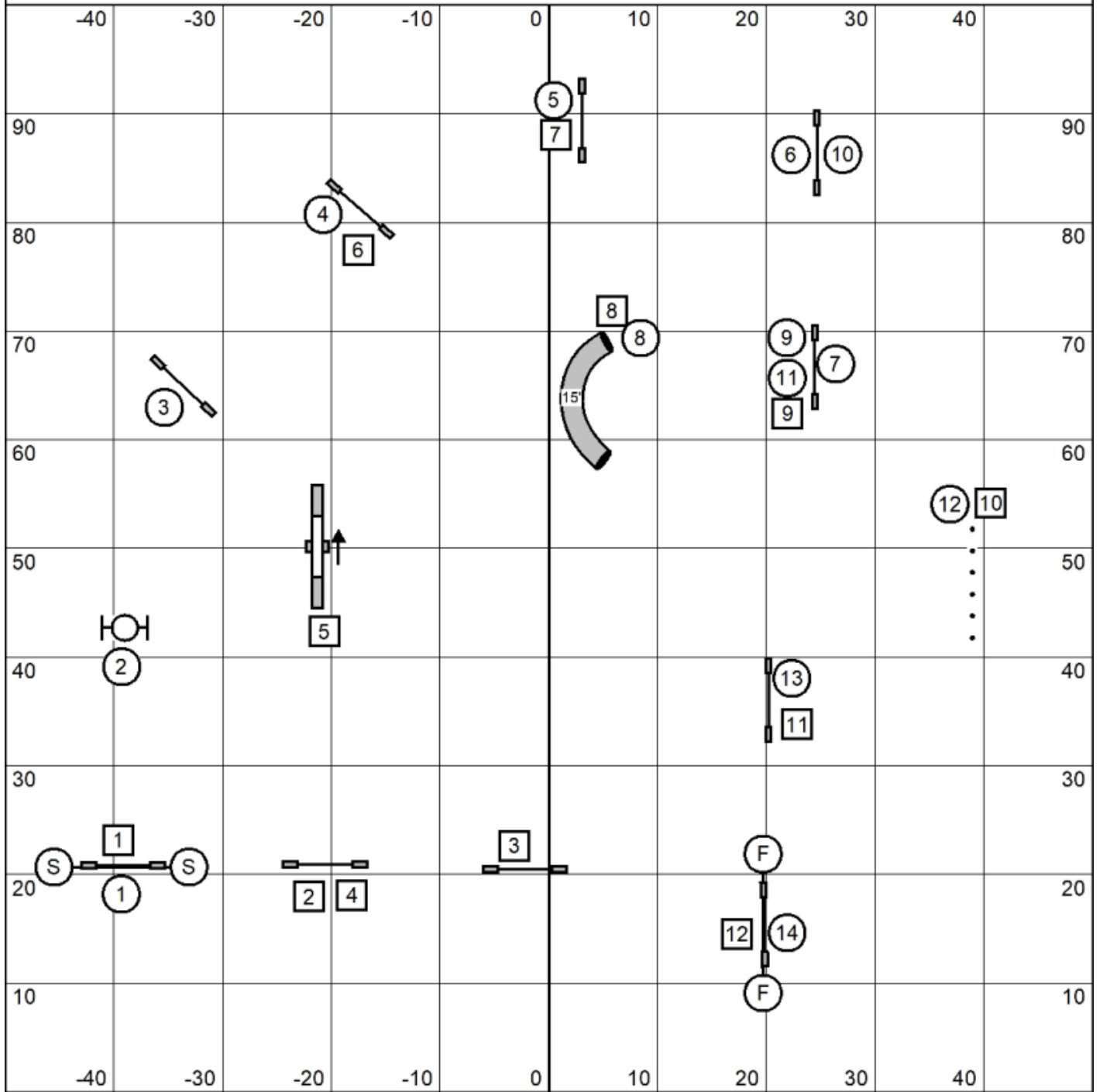
4/8/12" dogs have 35 seconds in the opening and 22 seconds in the closing and 16/20/24" dogs have 30 seconds in the opening and 20 seconds in the closing.

Points needed to Qualify

	Reg/Vet		Total Points
	Opening	Gamble	
Level 5C	24	20	44
Level 3	20	20	40
Level 2	16	20	36
Level 1	12	20	32
	Enth/Spec		Total Points
	Opening	Gamble	
Level 5C	22	20	42
Level 3	18	20	38
Level 2	14	20	34
Level 1	10	20	30

Jackpot All Levels
Judged by: Carol Thom
May 17, 2026
SoBAD
Stephentown, NY

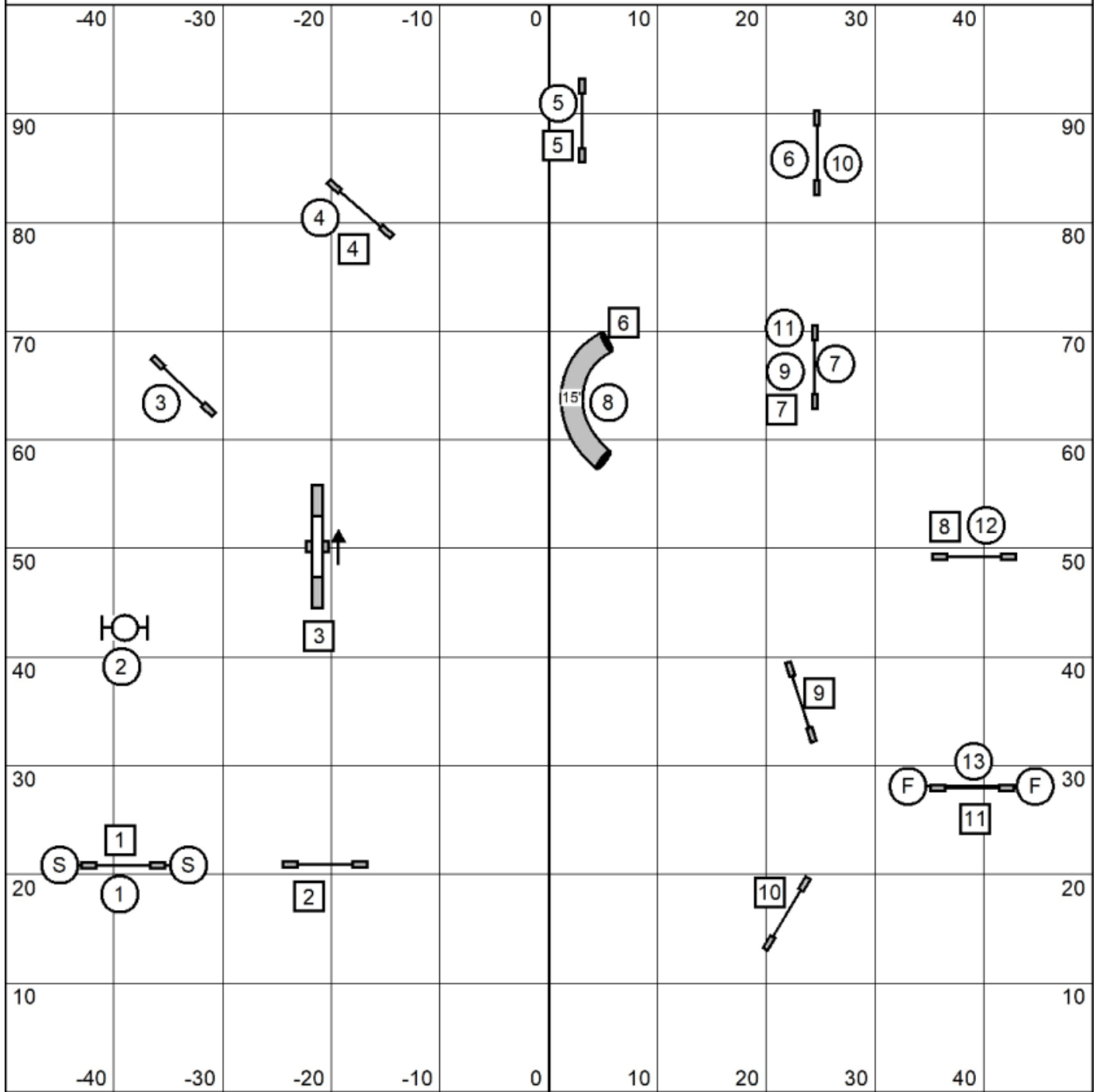
Colors 35C



Next dog in at 11

Colors Levels 3,5 & C
 Judged by: Carol Thom
 May 17, 2026
 SoBAD
 Stephentown, NY

Colors 12



Next dog in at 10

Colors Levels 1 & 2
 Judged by: Carol Thom
 May 17, 2026
 SoBAD
 Stephentown, NY