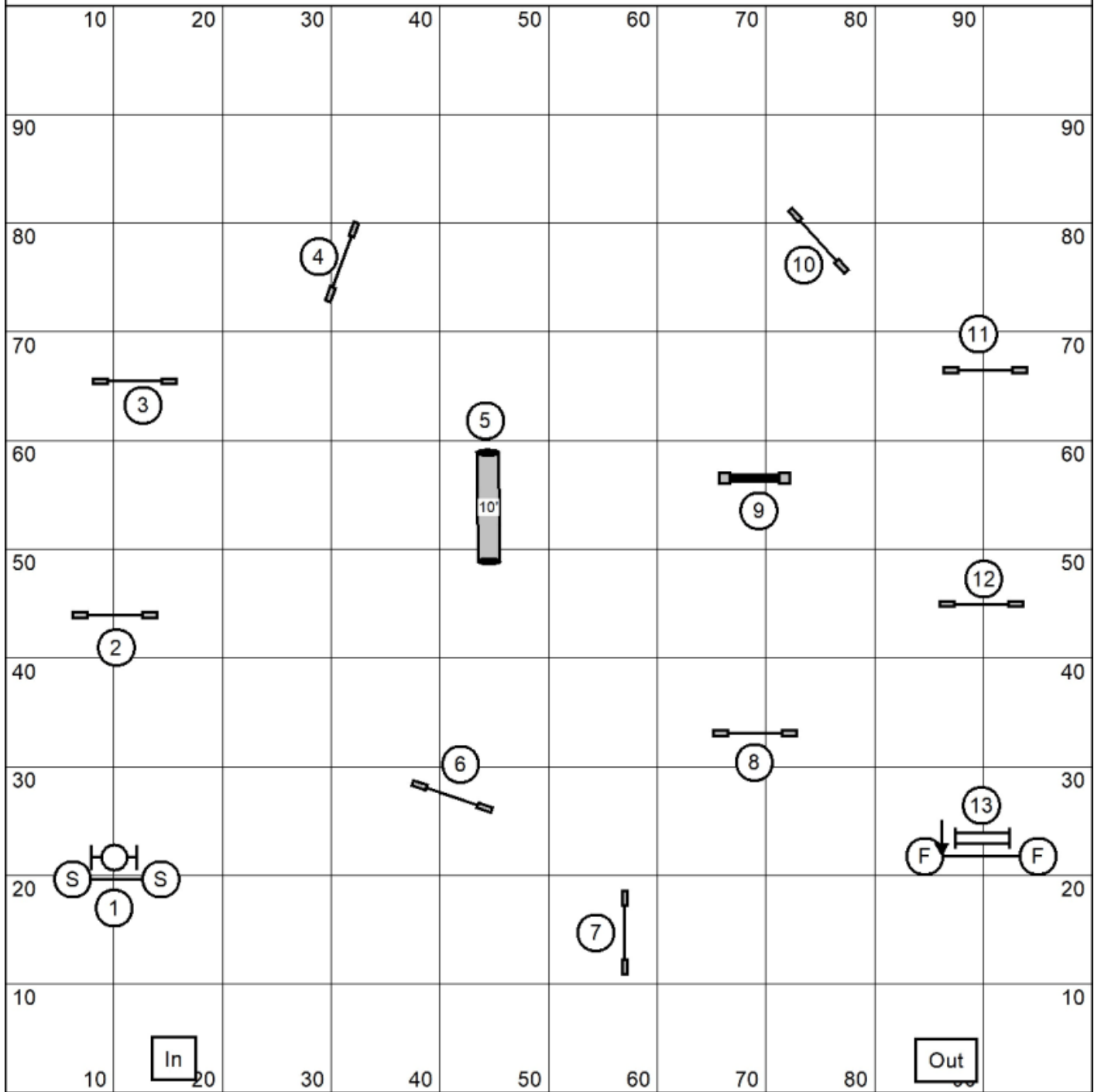


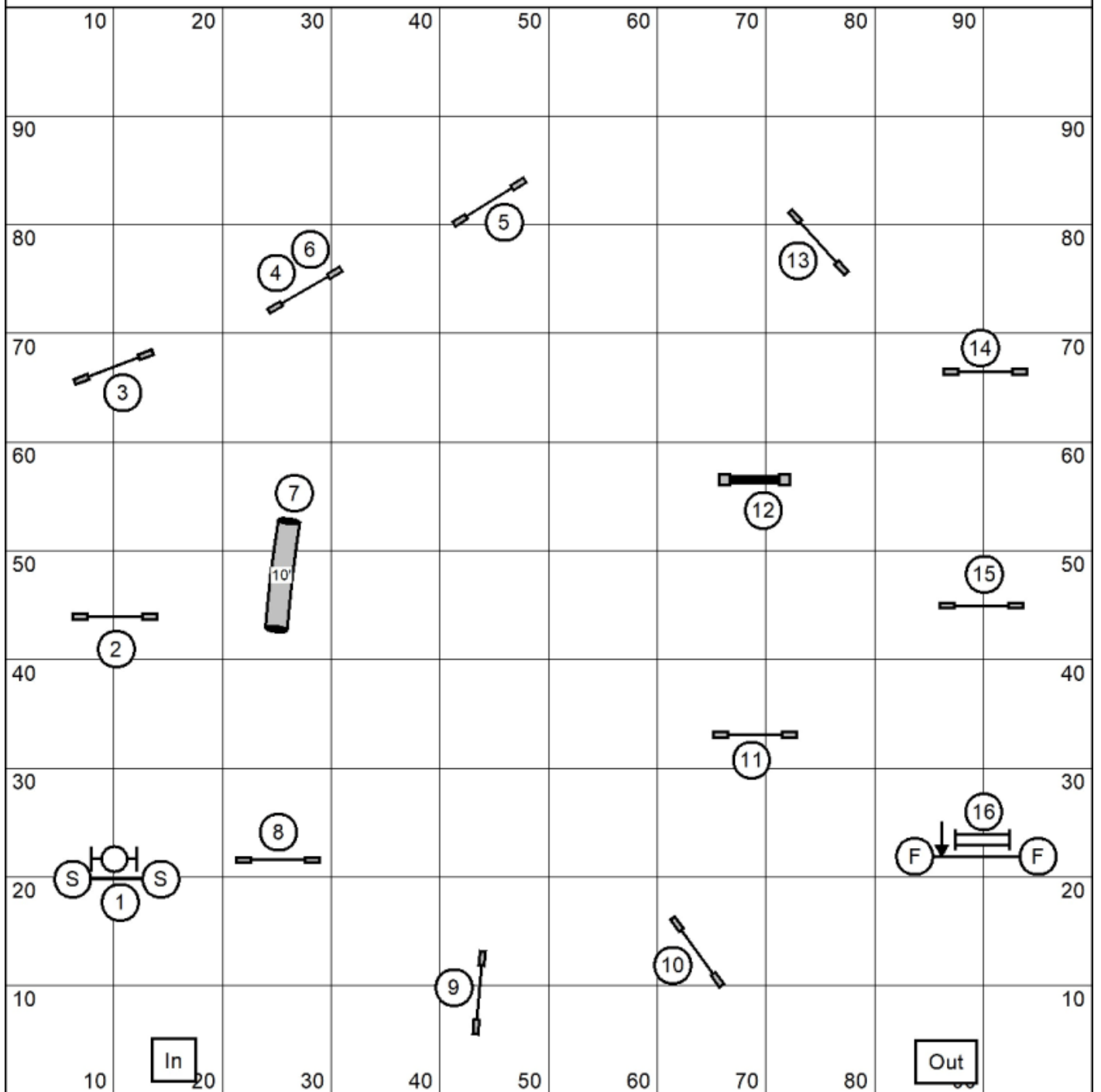
# Jumpers 12 Rd 1 & DD



Jumpers Levels 1 & 2  
 Round 1 and Doubledown  
 Judged by: Carol Thom  
 April 26, 2026  
 Southern Connecticut Agility Team  
 Northford, CT

Next dog in at # 12

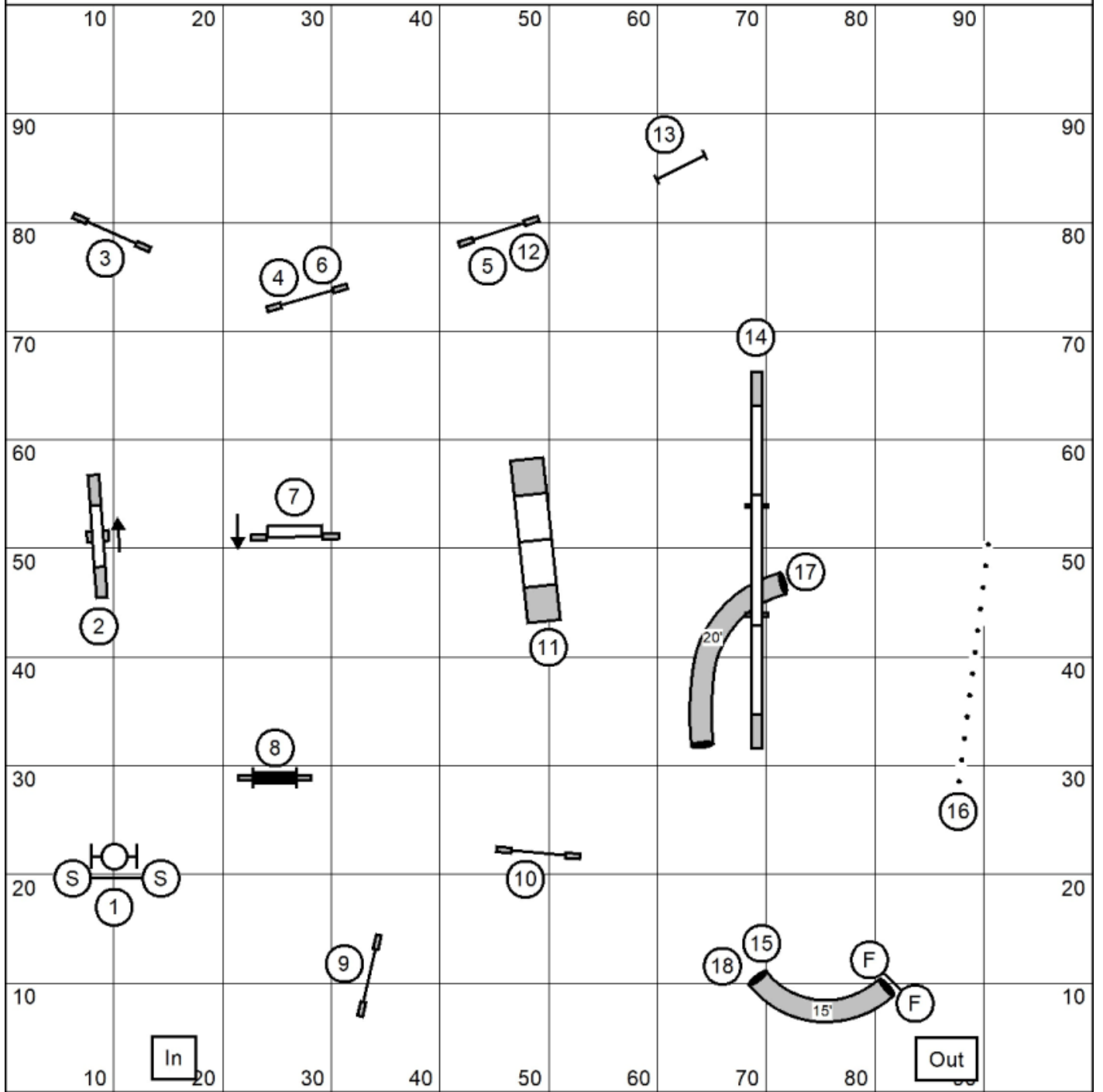
# Jumpers 35C Rd 1 & DD



Next dog in at # 15

Jumpers Levels 3,5 & C  
 Round 1 and Doubledown  
 Judged by: Carol Thom  
 April 26, 2026  
 Southern Connecticut Agility Team  
 Northford, CT

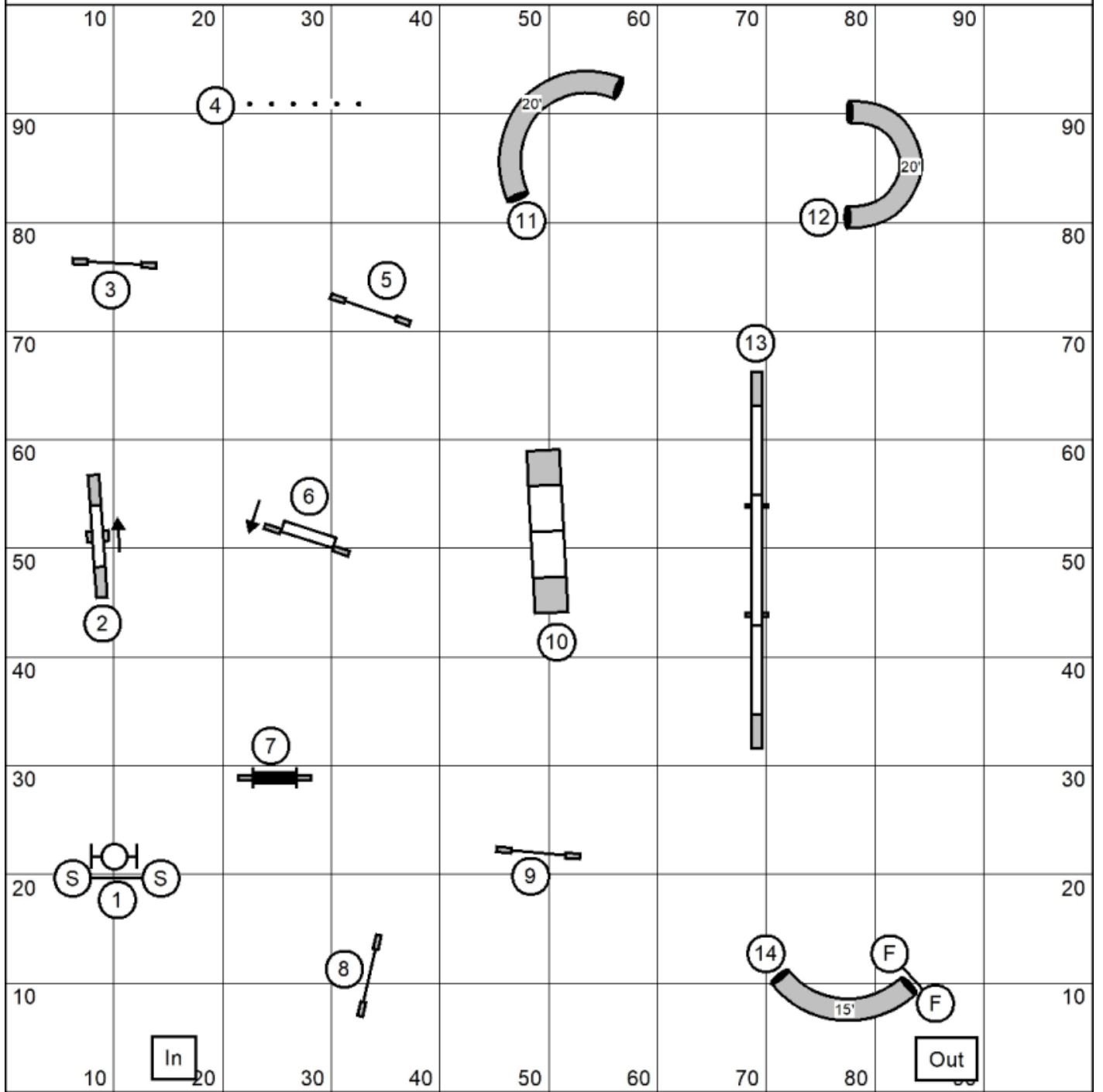
# Standard 5C



Next dog in at # 17

Standard Levels 5 & C  
 Judged by: Carol Thom  
 April 26, 2026  
 Southern Connecticut Agility Team  
 Northford, CT

# Standard 23



Standard Levels 2 & 3

Judged by: Carol Thom

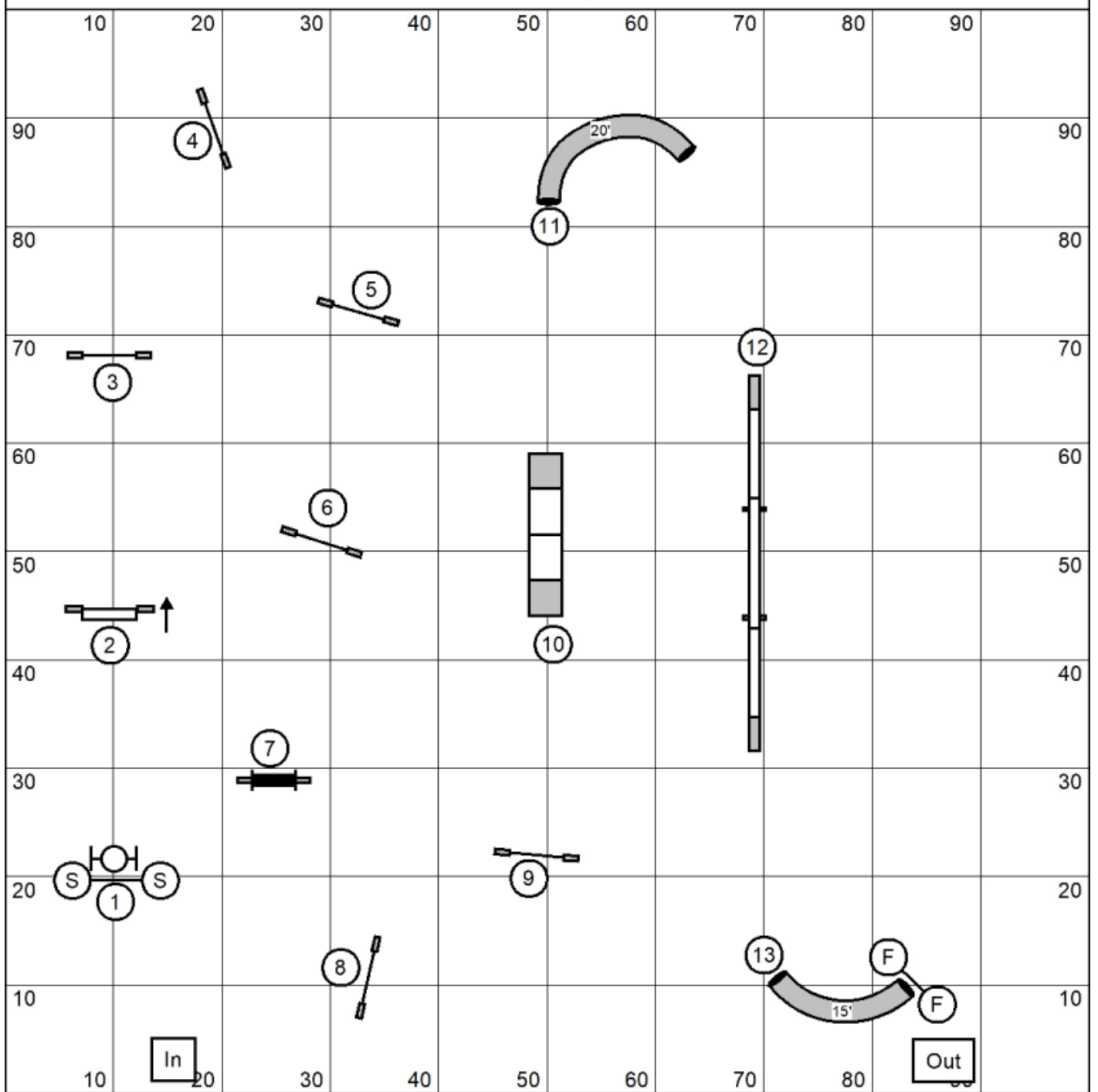
April 26, 2026

Southern Connecticut Agility Team

Northford, CT

Next dog in at # 13

# Standard 1



Standard Level 1

Judged by: Carol Thom

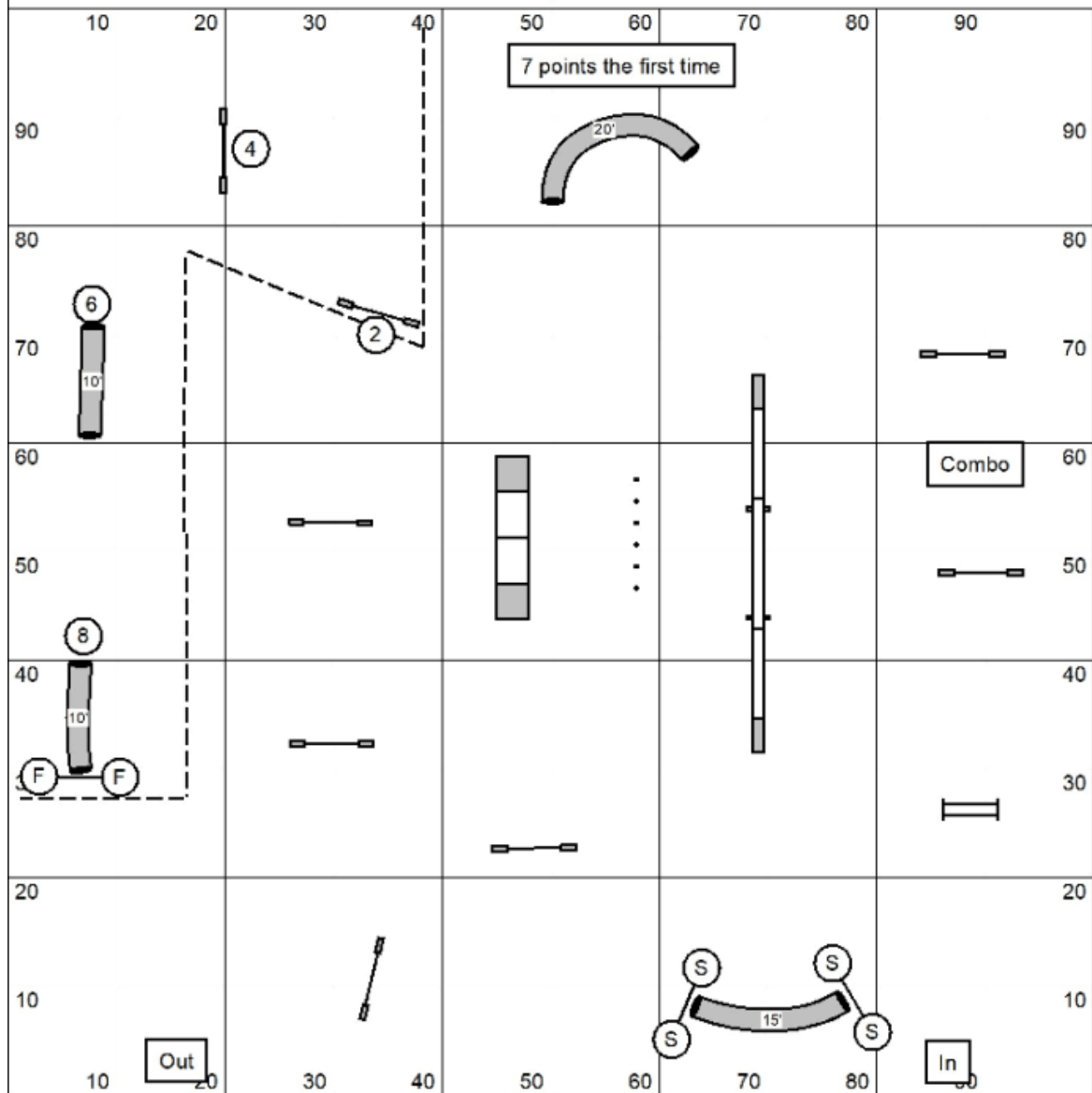
April 26, 2026

Southern Connecticut Agility Team

Northford, CT

Next dog in at # 12

# Jackpot 12



**BRIEFING:** The startline is bidirectional. Everything may be taken twice successfully for points during the opening time. Back to back is fine as long as it is done safely. In the opening no two sequentially numbered gamble obstacles may be taken back to back or you negate your gamble. Once the horn sounds you stop accumulating points and must successfully complete the gamble (2,4,6,8) within the time allowed to Q.

The #8 Tunnel in the jackpot is live after the first horn.

- 1 point obstacles- single jumps
- 3 point obstacles- tunnels, weaves and double jump
- 5 point obstacles -Combo, Dogwalk, Aframe
- 20 foot tunnel is 7 points first time, 3 points second time

Level 1 needs 12 points plus gamble  
 Level 2 needs 16 points plus gamble

Enth/spec need 2 points less

Small dog time- 35 opening; 22 closing  
 Big dog time- 30 opening, 20 closing

Jackpot Levels 1 & 2  
 Judged by: Carol Thom  
 April 26, 2026  
 Southern Connecticut Agility Team  
 Northford, CT





