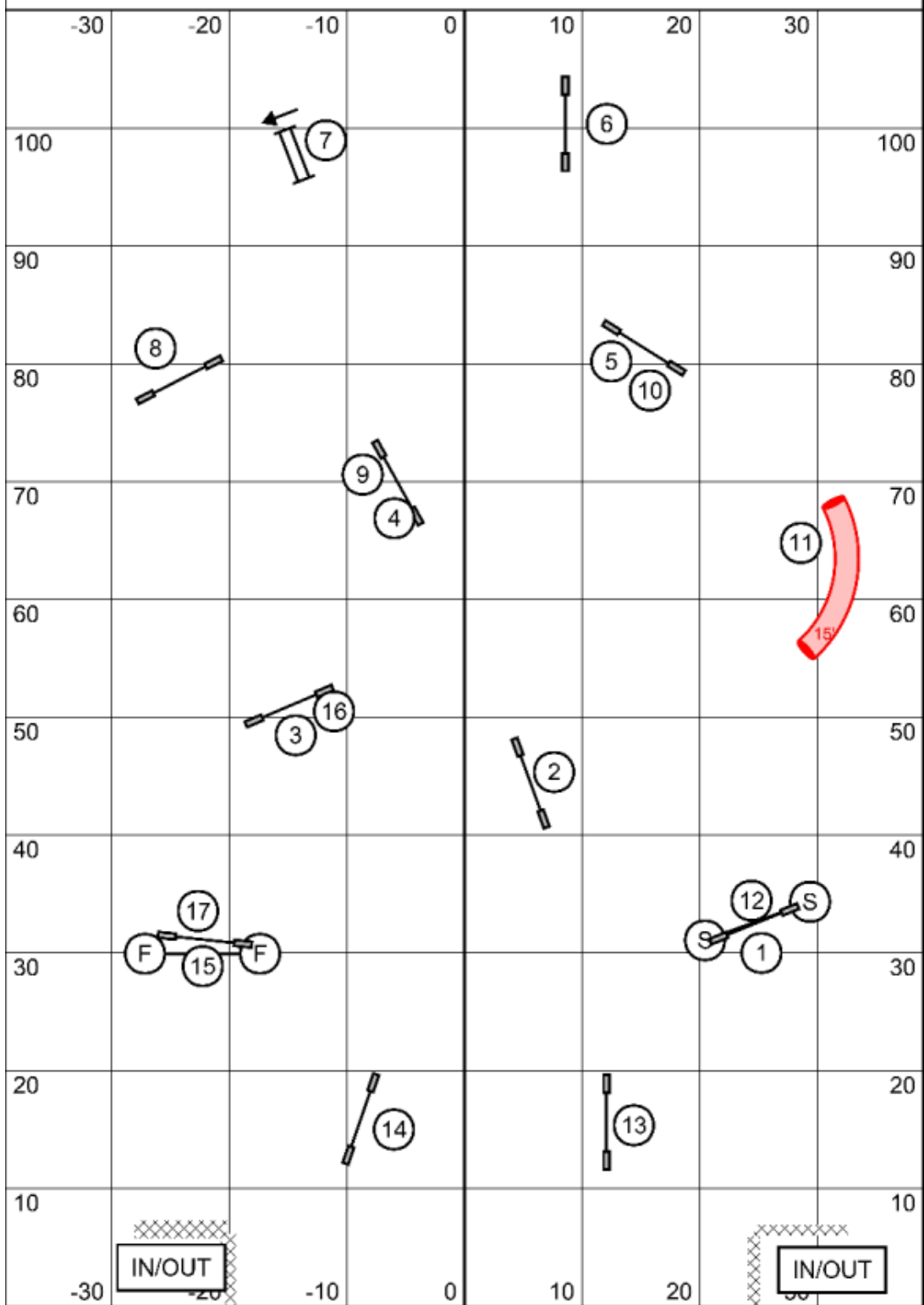
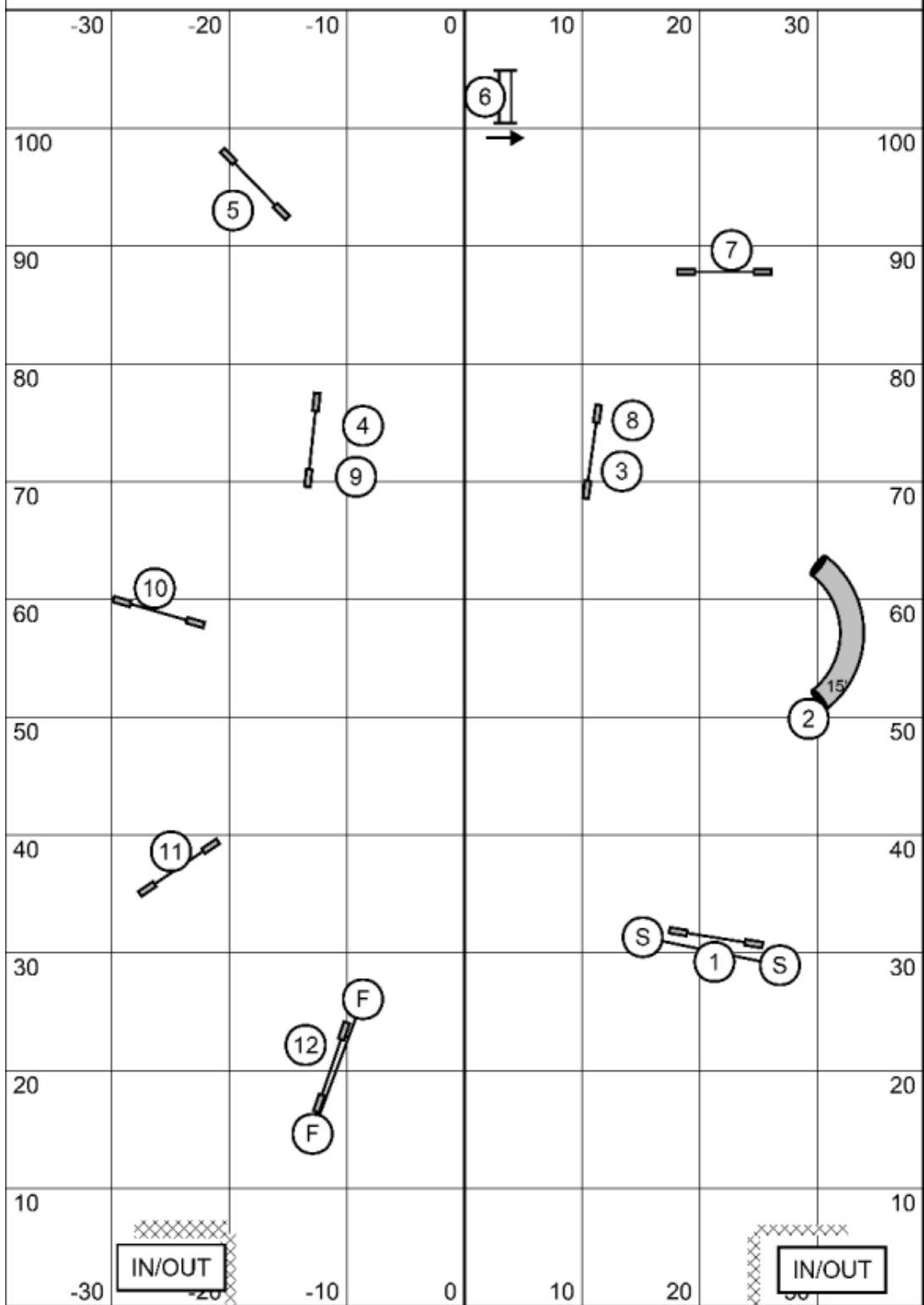


# JUMPERS 35C



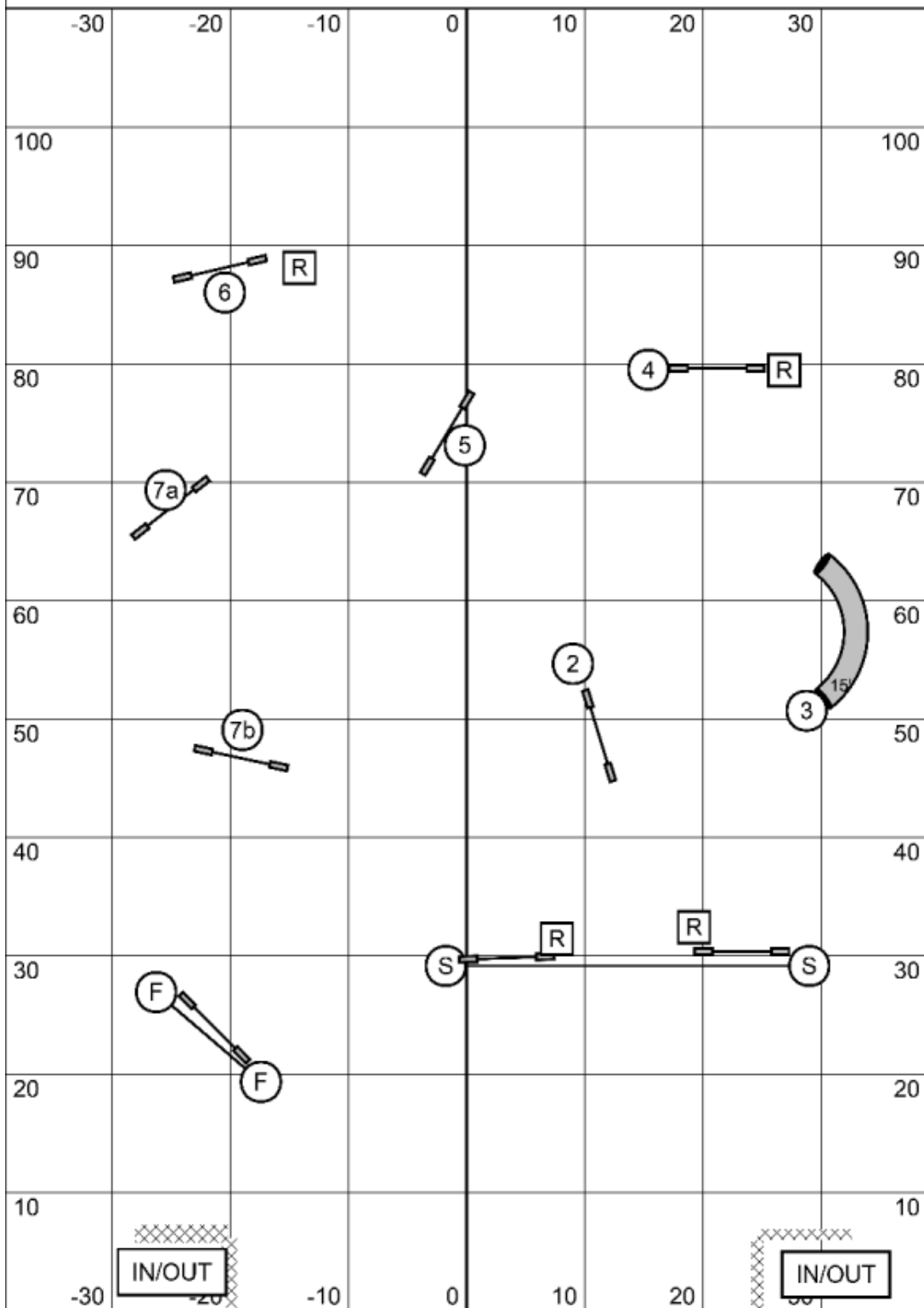
Jumpers 35C  
 Judged by: Tina Power  
 Canine Sports & Games, LLC  
 April 18, 2026  
 Lapeer, MI

# JUMPERS 12



Jumpers 12  
 Judged by: Tina Power  
 Canine Sports & Games, LLC  
 April 18, 2026  
 Lapeer, MI

# SNOOKER 35C

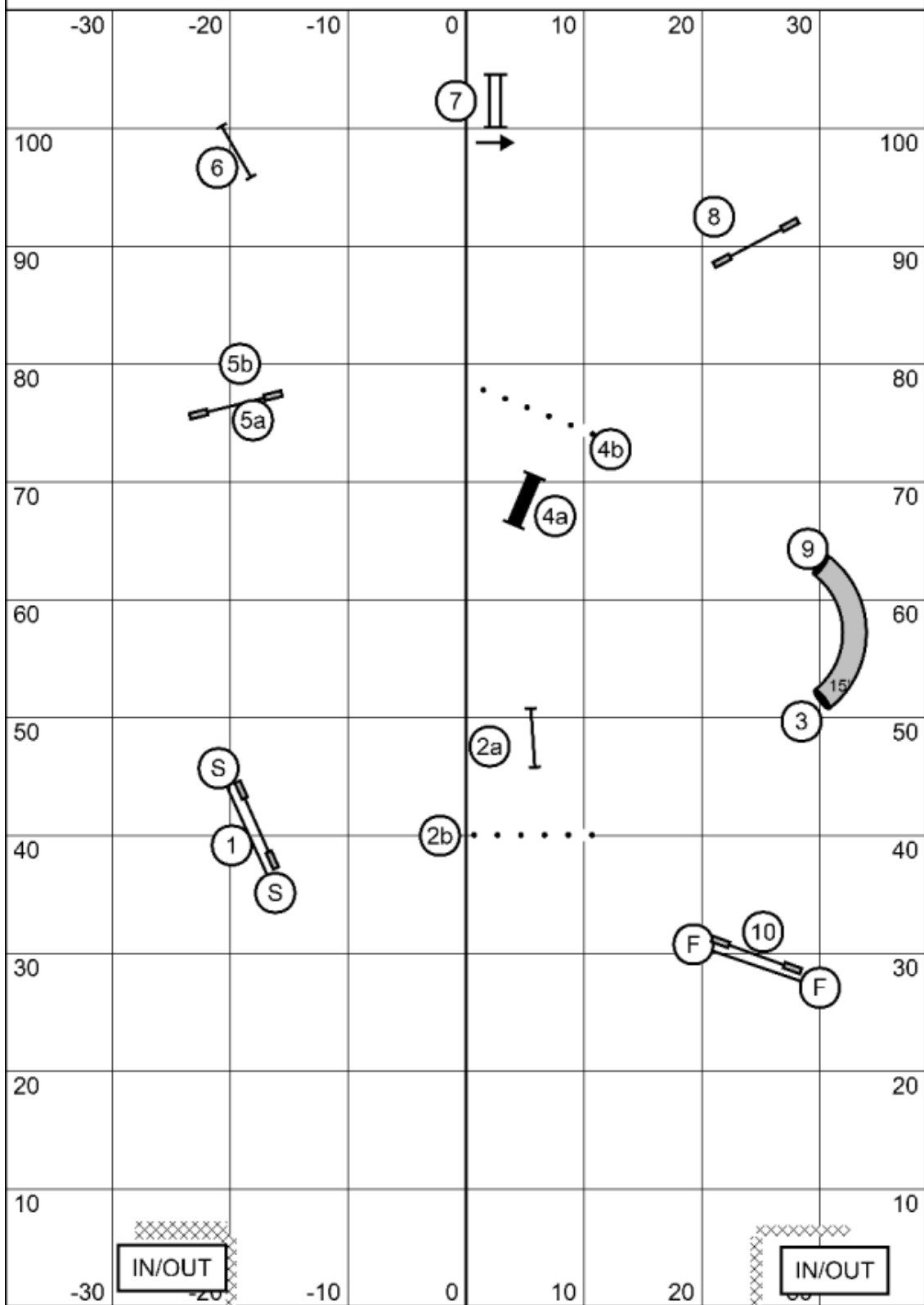


Snooker 35C  
 Judged by: Tina Power  
 Canine Sports & Games, LLC  
 April 18, 2026  
 Lapeer, MI

2 is bi-directional  
 Big Dog Time = 50  
 Small Dog Time = 55

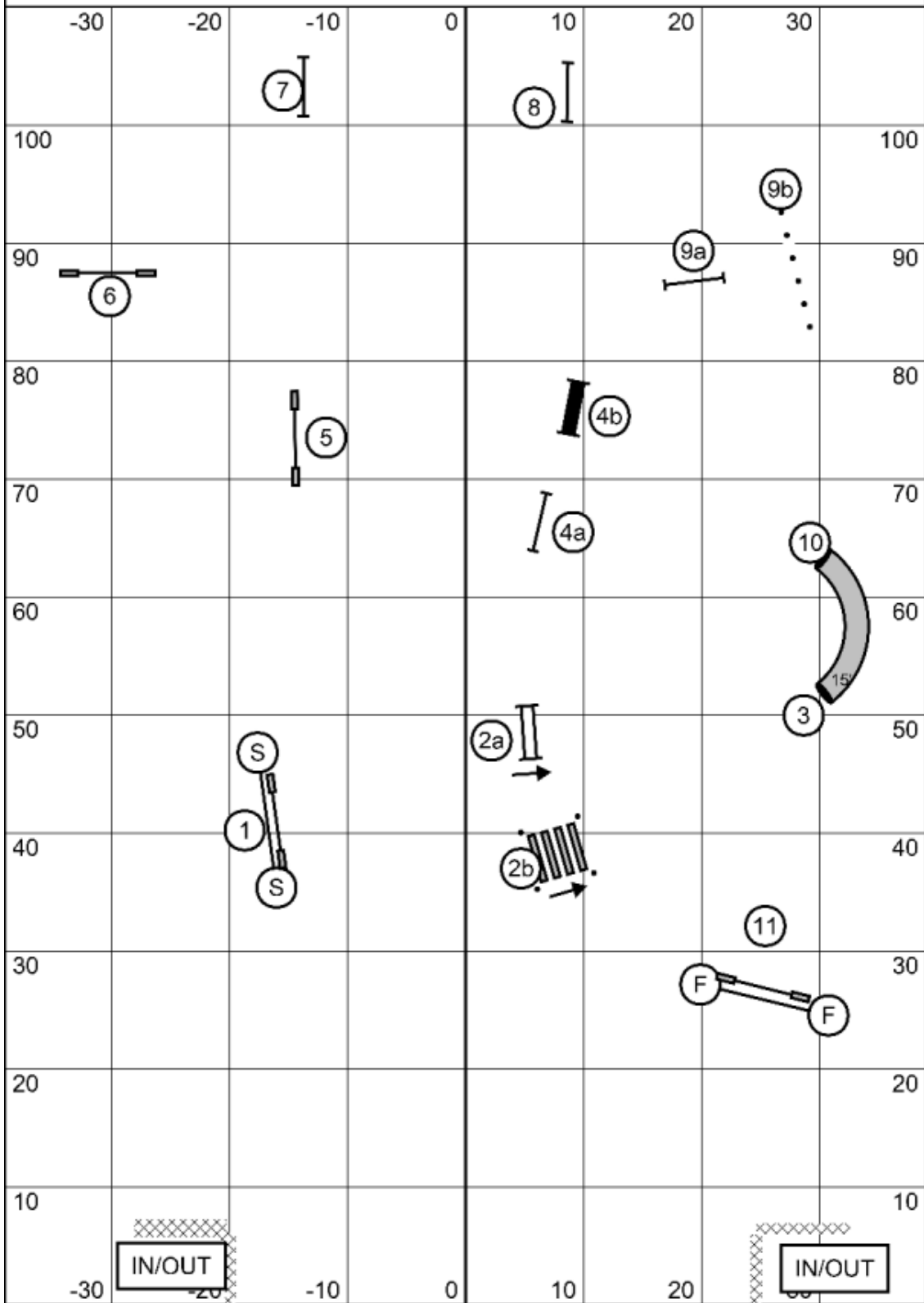


# WILDCARD 35C



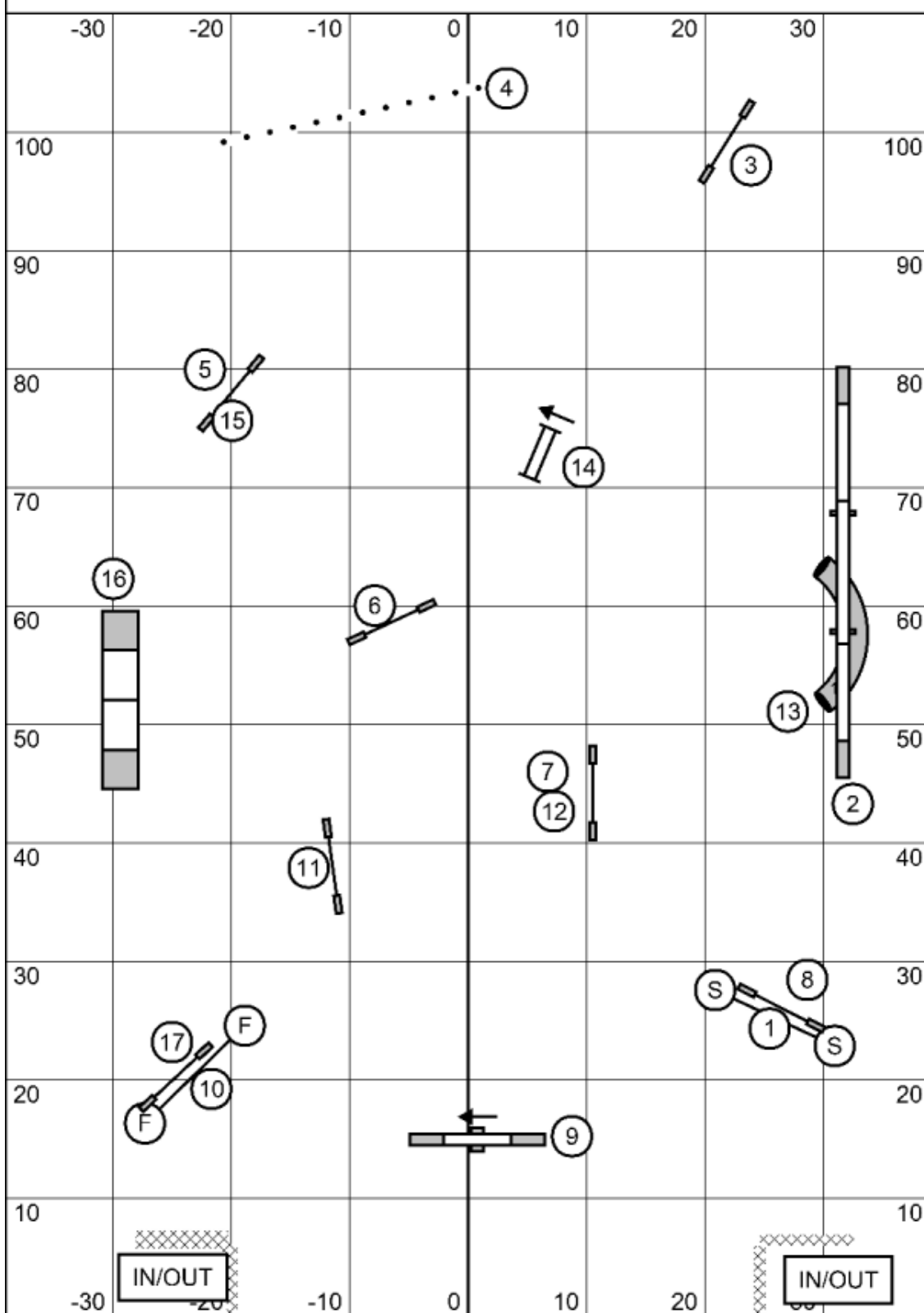
Wildcard 35C  
Judged by: Tina Power  
Canine Sports & Games, LLC  
April 18, 2026  
Lapeer, MI

# WILDCARD 12



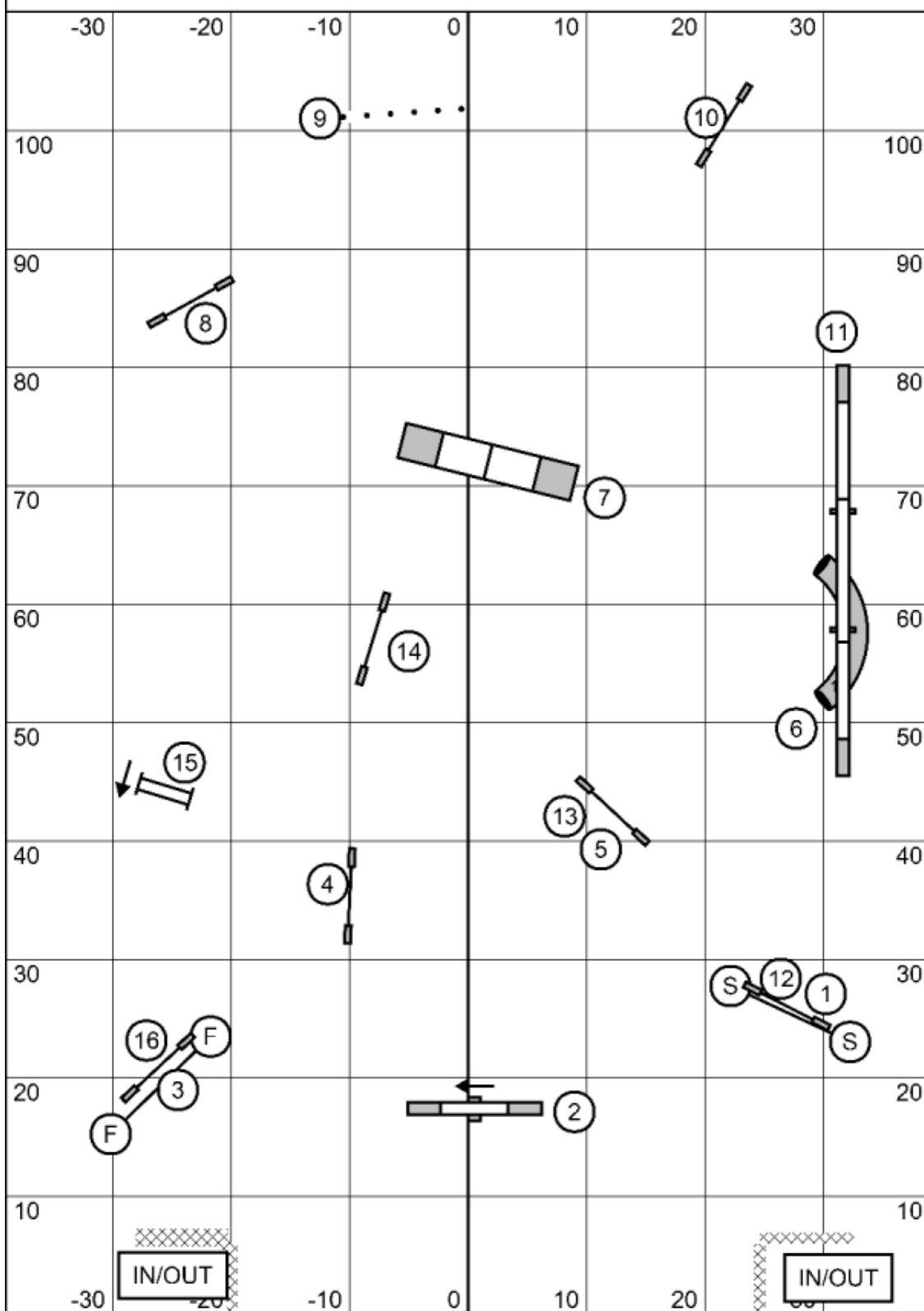
Wildcard 12  
 Judged by: Tina Power  
 Canine Sports & Games, LLC  
 April 18, 2026  
 Lapeer, MI

# STANDARD 5C



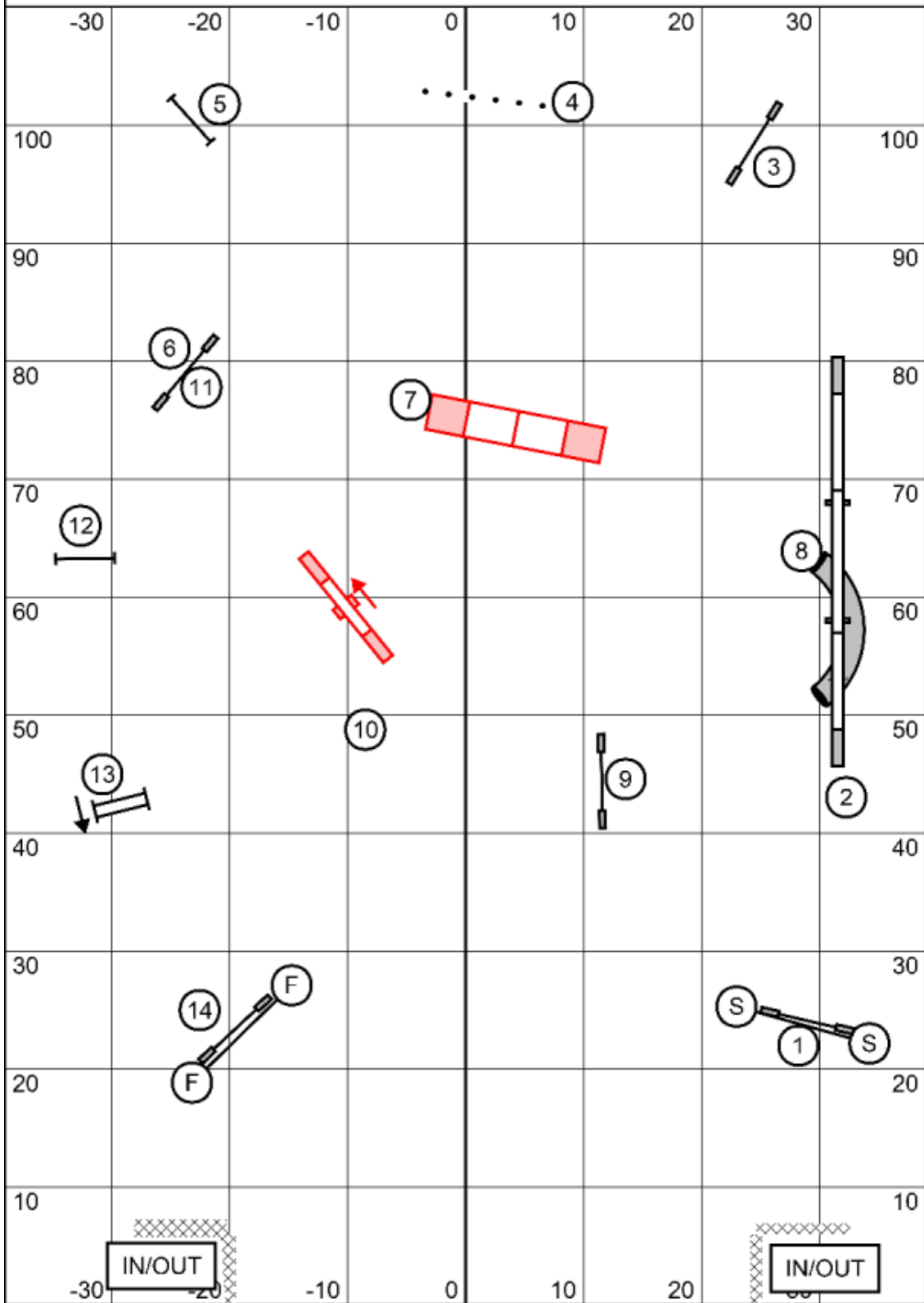
Standard 5C  
Judged by: Tina Power  
Canine Sports & Games, LLC  
April 18, 2026  
Lapeer, MI

# STANDARD 3



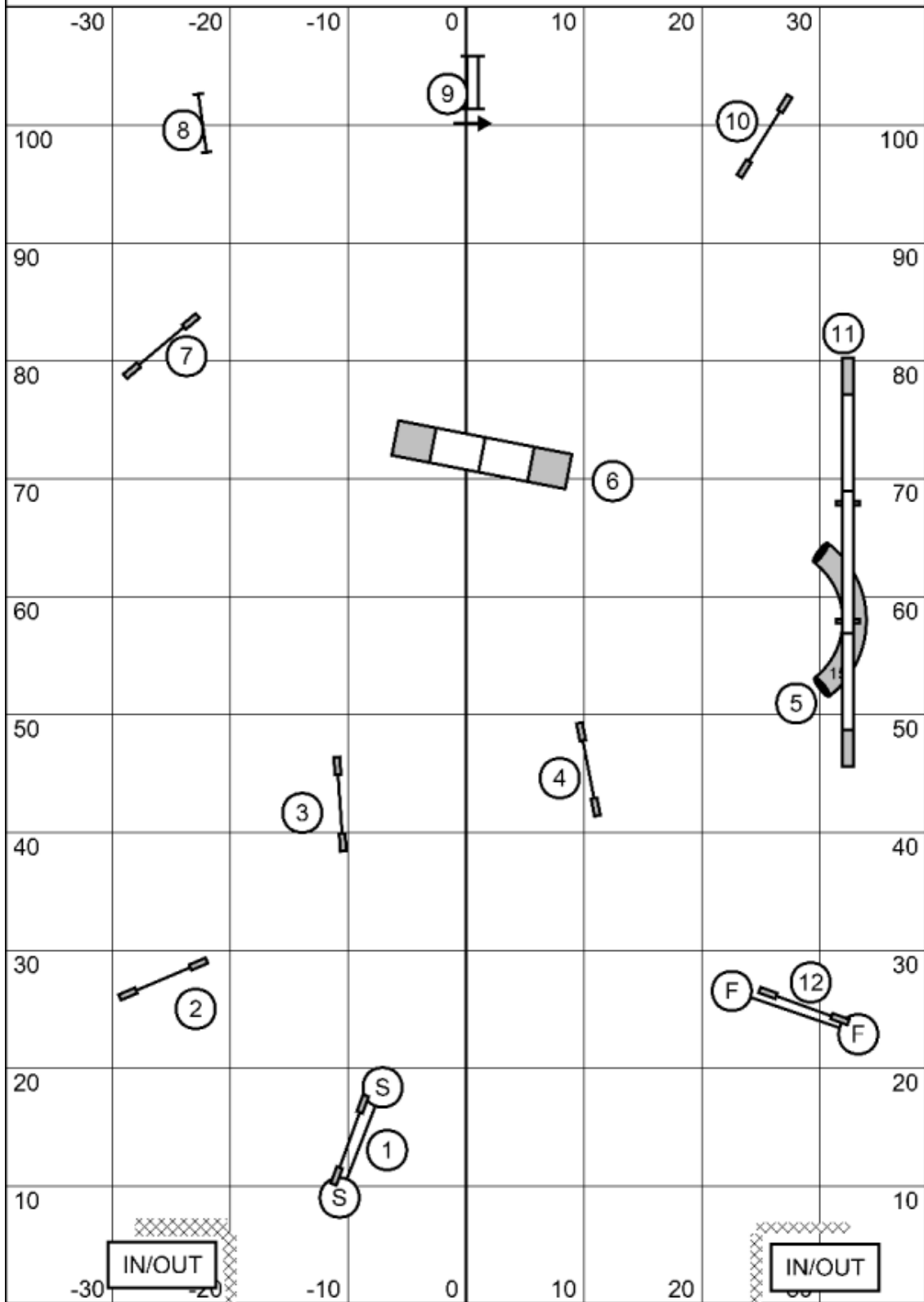
Standard 3  
 Judged by: Tina Power  
 Canine Sports & Games, LLC  
 April 18, 2026  
 Lapeer, MI

# STANDARD 2



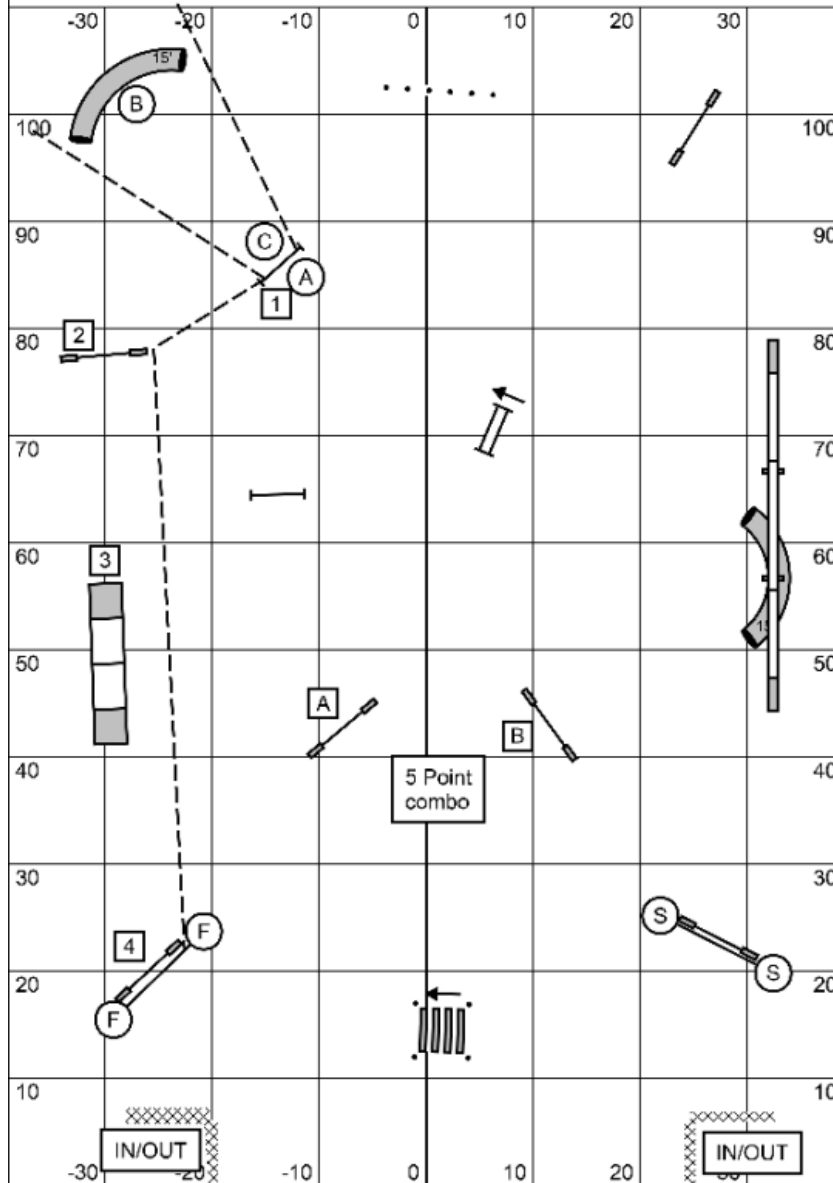
Standard 2  
 Judged by: Tina Power  
 Canine Sports & Games, LLC  
 April 18, 2026  
 Lapeer, MI

# STANDARD 1



Standard 1  
Judged by: Tina Power  
Canine Sports & Games, LLC  
April 18, 2026  
Lapeer, MI

# JACKPOT 1235C



## Non Traditional Jackpot Briefing:

### To Qualify:

At least 1 of 2 Gambles must be completed successfully behind the distance line and within the specified total course time. The gamble can be done at any time as long as completed within total course time.

A-B-C circle gamble = 20 points and must be done A-B-C  
 1-2-3-4 or 4-3-2-1 square gamble = 25 points

### Jackpot Times:

Big Dogs: 16V/16/20/24 =  
 Opening 30 Sec, Closing 20 sec = 50 sec total

Small Dogs: 4/8/12 =  
 Opening 35 sec and Close 22 sec = 57 sec total

Second horn will sound 6 seconds after total game time.

### Total Points Needed:

Level 5C: Reg/Vet = 44 points less 2 for Enth or Spec  
 Level 3: Reg/Vet = 40 points less 2 for Enth or Spec  
 Level 2: Reg/Vet = 36 points less 2 for Enth or Spec  
 Level 1: Reg/Vet = 32 points less 2 for Enth or Spec

AFrame, Walk, Broad = 5 points  
 Double, Tunnels, Weaves = 3 points  
 Jumps = 1 point

All obstacles can be done twice for regular points.  
 Obstacles can be done back to back, please do them safely.  
 You can accumulate points or do gambles after first horn.  
 Table will stop your time/end the game after first (opening) horn.  
 Startline is bidirectional

Jackpot 1235C  
 Judged by: Tina Power  
 Canine Sports & Games, LLC  
 April 18, 2026  
 Lapeer, MI