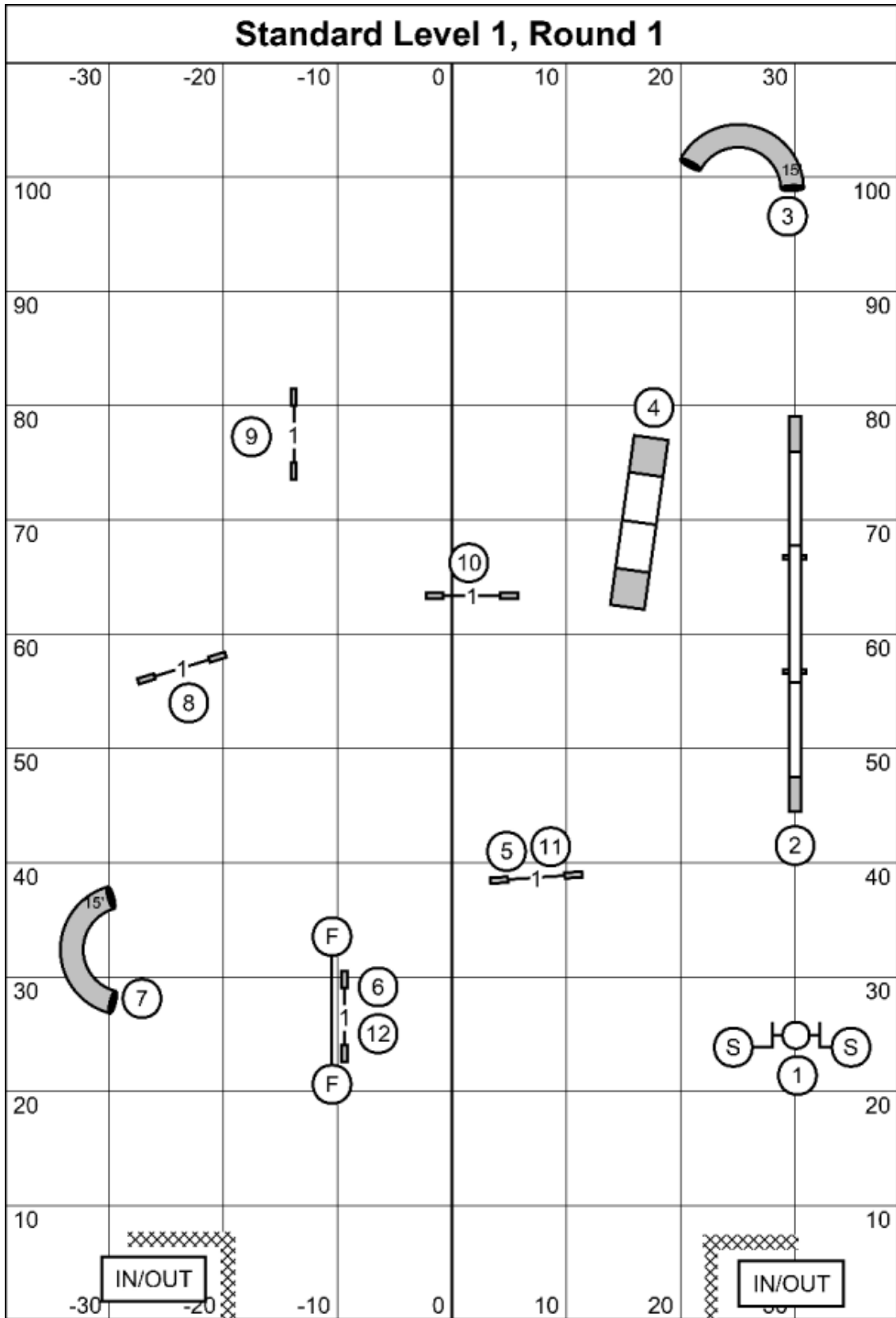


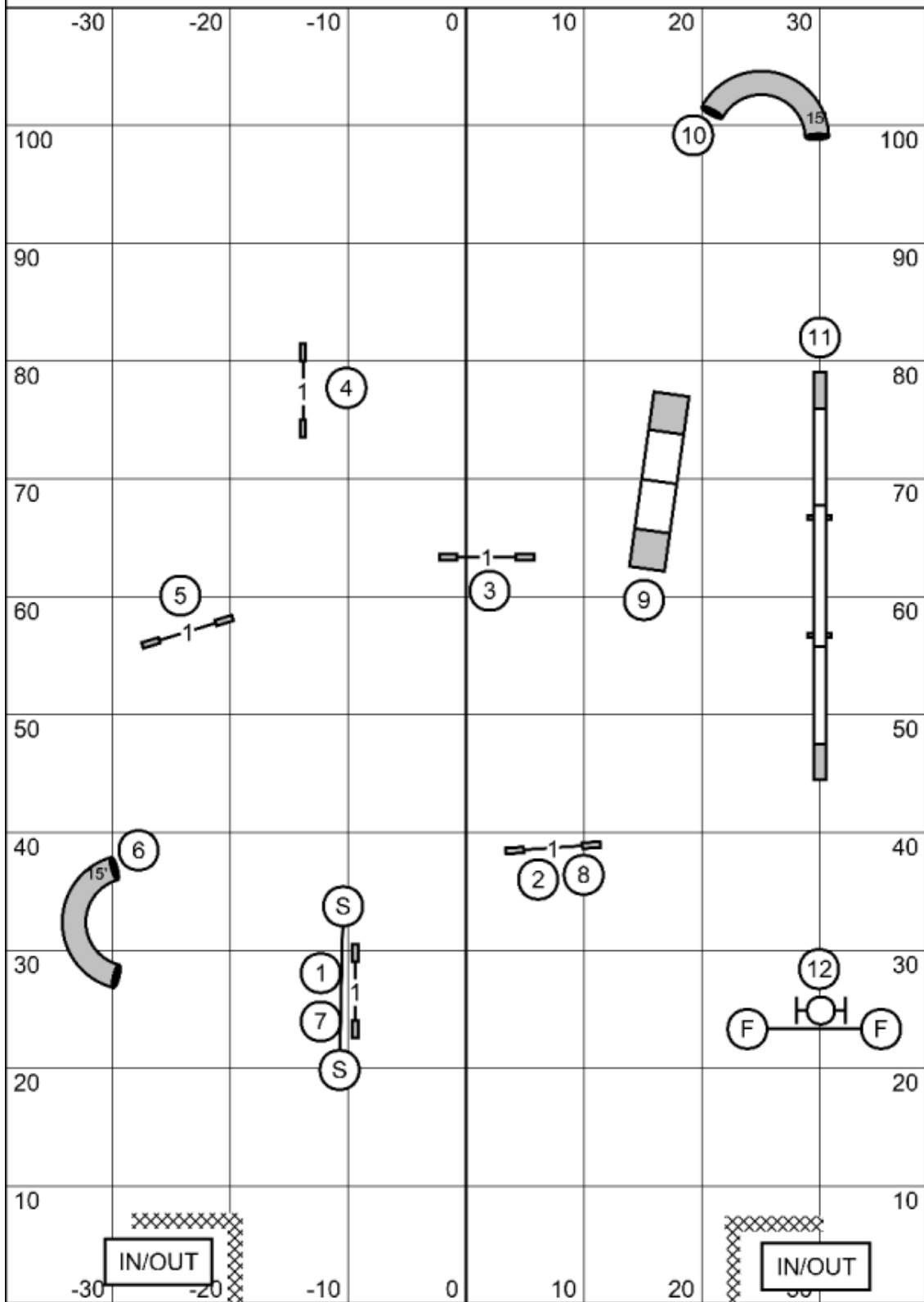
Standard Level 1, Round 1



Next Dog: Please enter the ring when the team ahead of you is at #11

Standard Level 1, Round 1
 Judged by: Mike Brownell
 April 3, 2026
 All Dogs Can
 Lapeer, MI

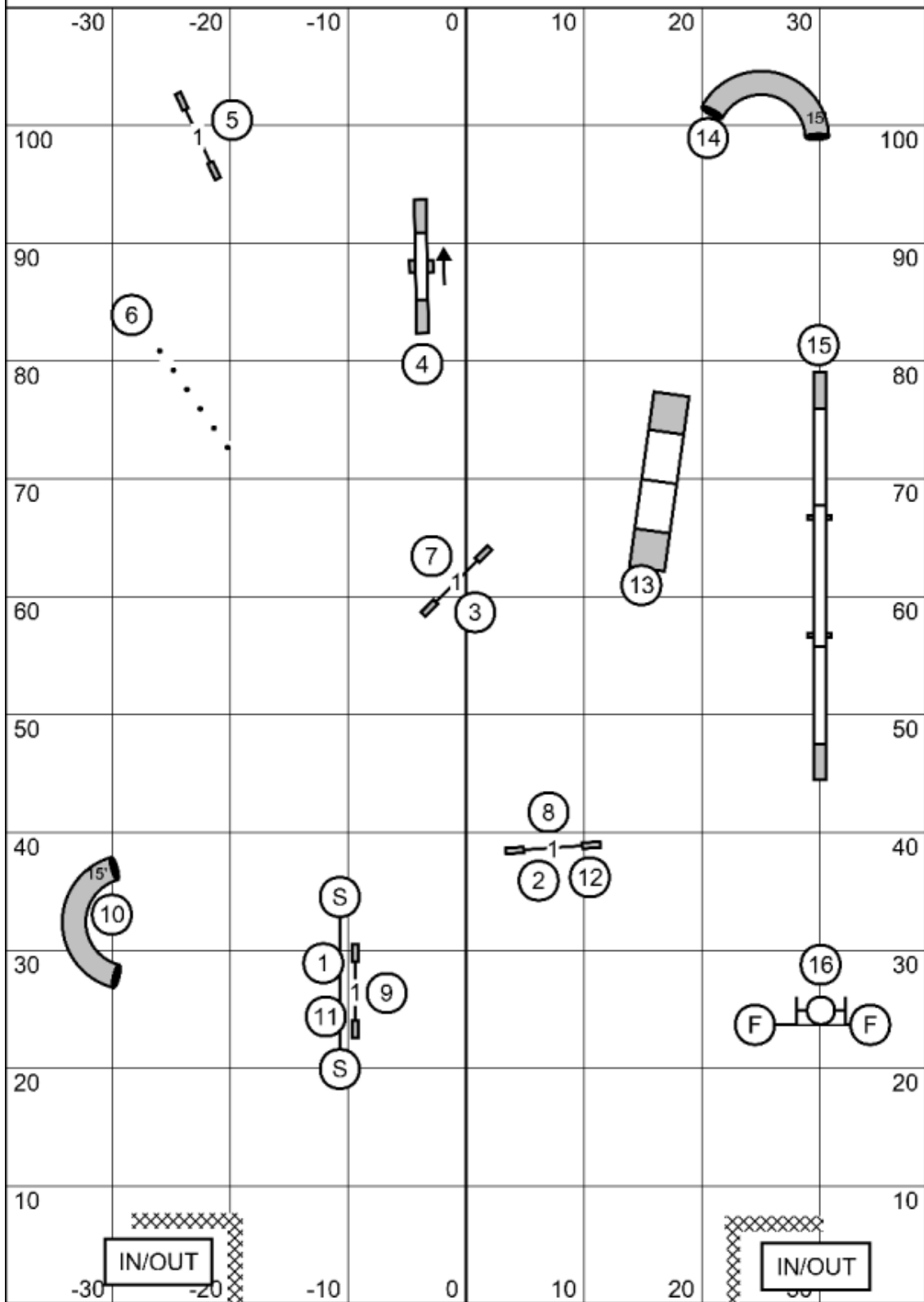
Standard Level 1, Round 2



Next Dog: Please enter the ring when the team ahead of you is at #9

Standard Level 1, Round 2
 Judged by: Mike Brownell
 April 3, 2026
 All Dogs Can
 Lapeer, MI

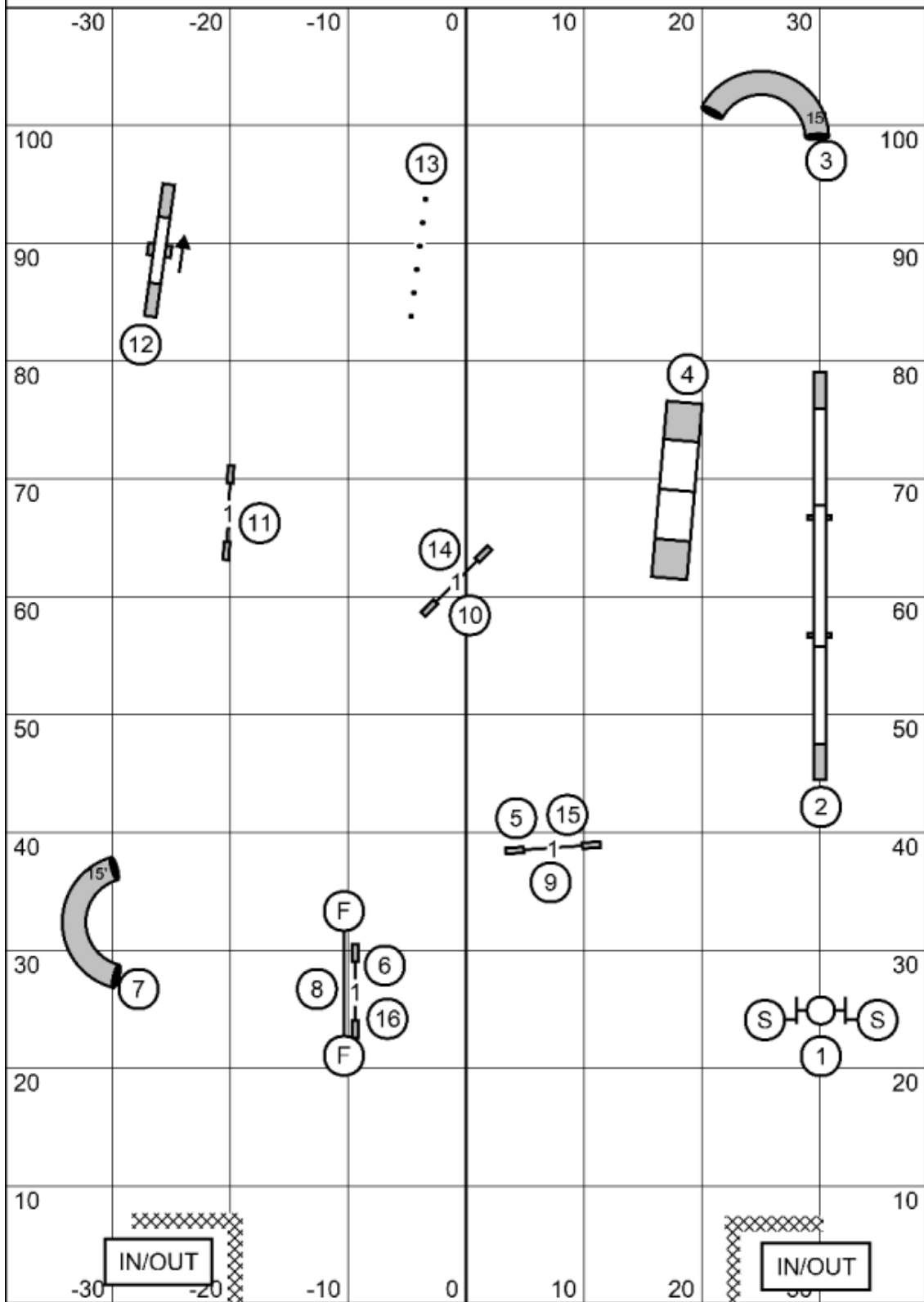
Standard Level 2, Round 1



Next Dog: Please enter the ring when the team ahead of you is at #13

Standard Level 2, Round 1
 Judged by: Mike Brownell
 April 3, 2026
 All Dogs Can
 Lapeer, MI

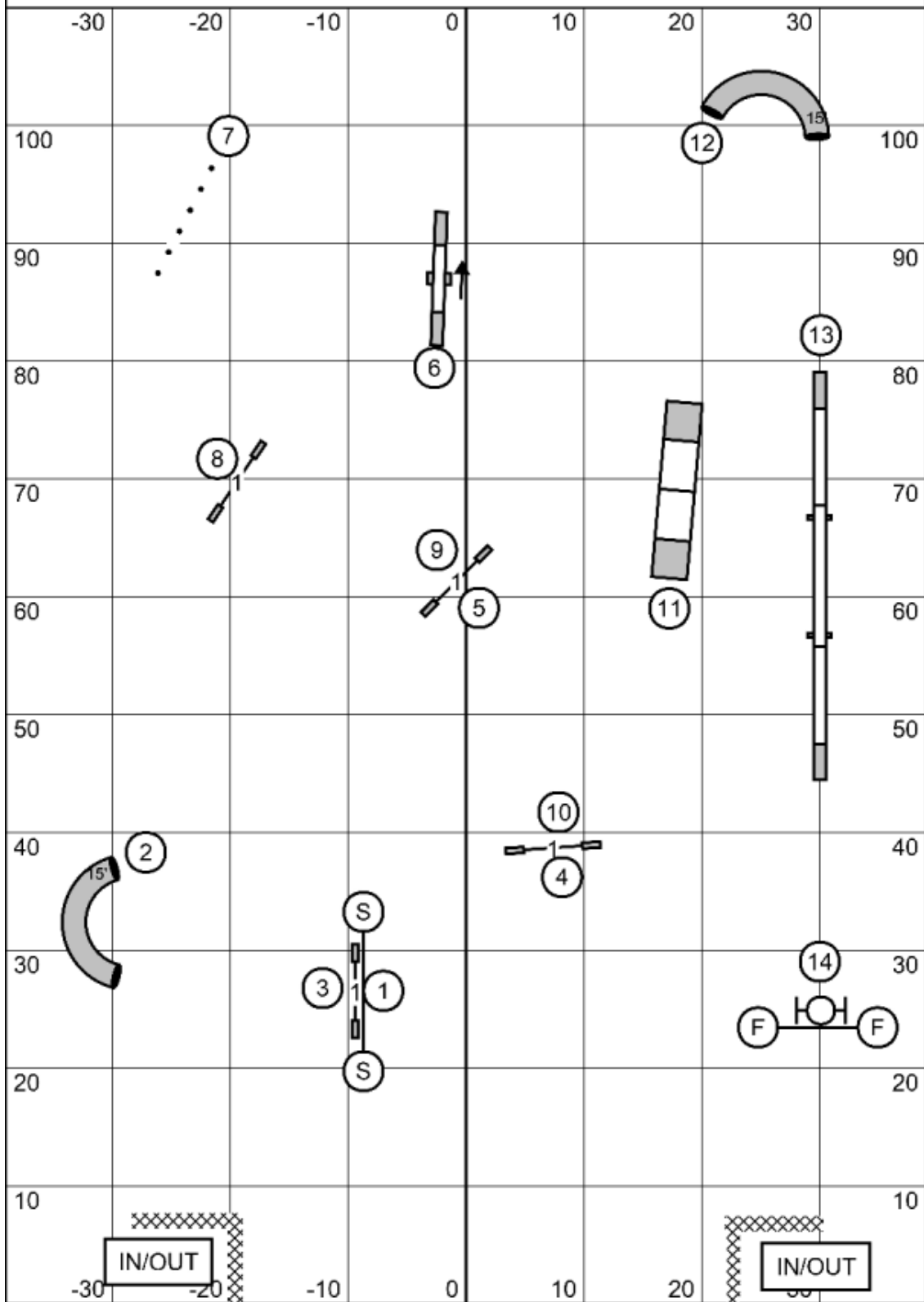
Standard Level 2, Round 2



Next Dog: Please enter the ring when the team ahead of you is at #15

Standard Level 2, Round 2
 Judged by: Mike Brownell
 April 3, 2026
 All Dogs Can
 Lapeer, MI

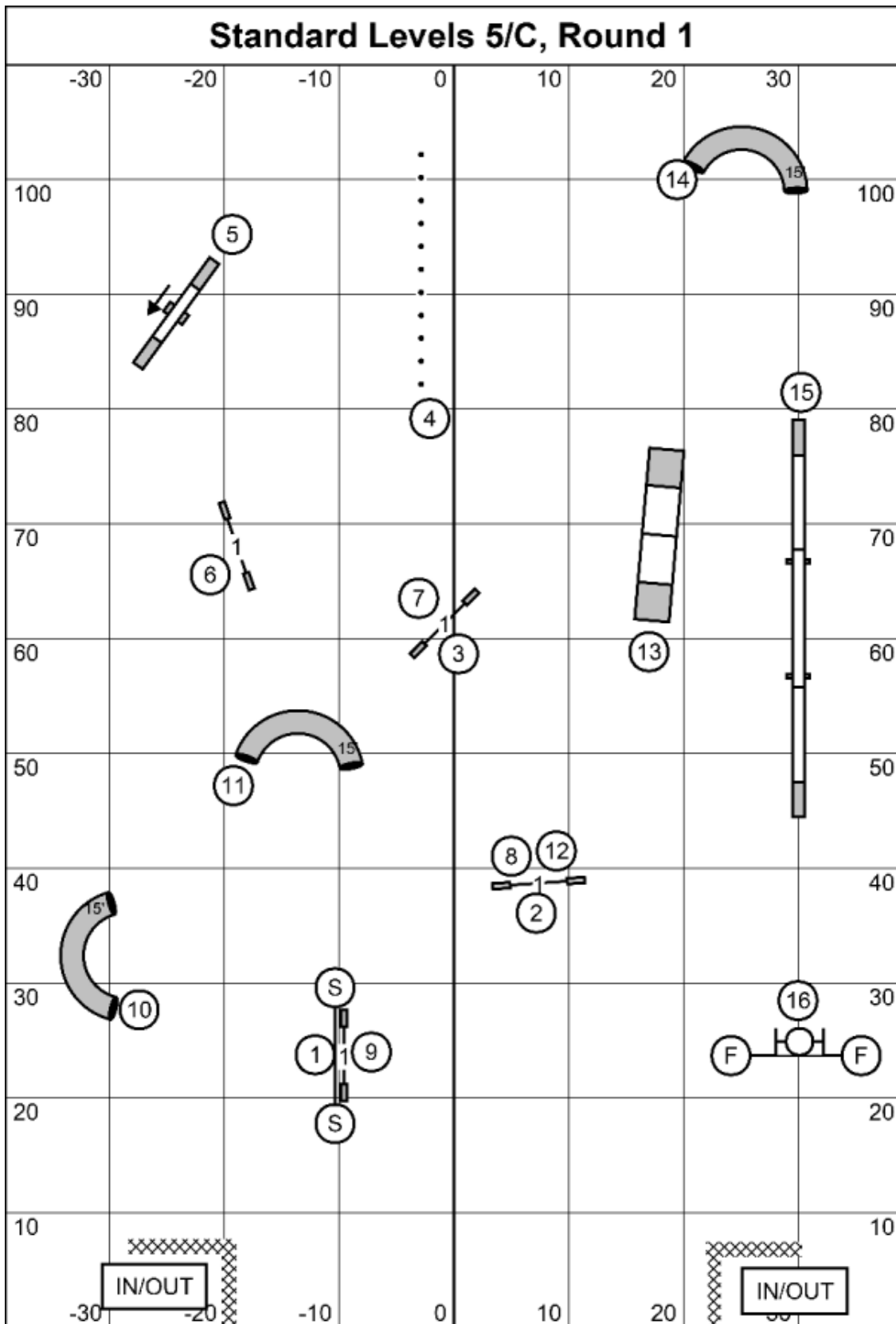
Standard Level 3, Round 2



Next Dog: Please enter the ring when the team ahead of you is at #11

Standard Level 3, Round 2
 Judged by: Mike Brownell
 April 3, 2026
 All Dogs Can
 Lapeer, MI

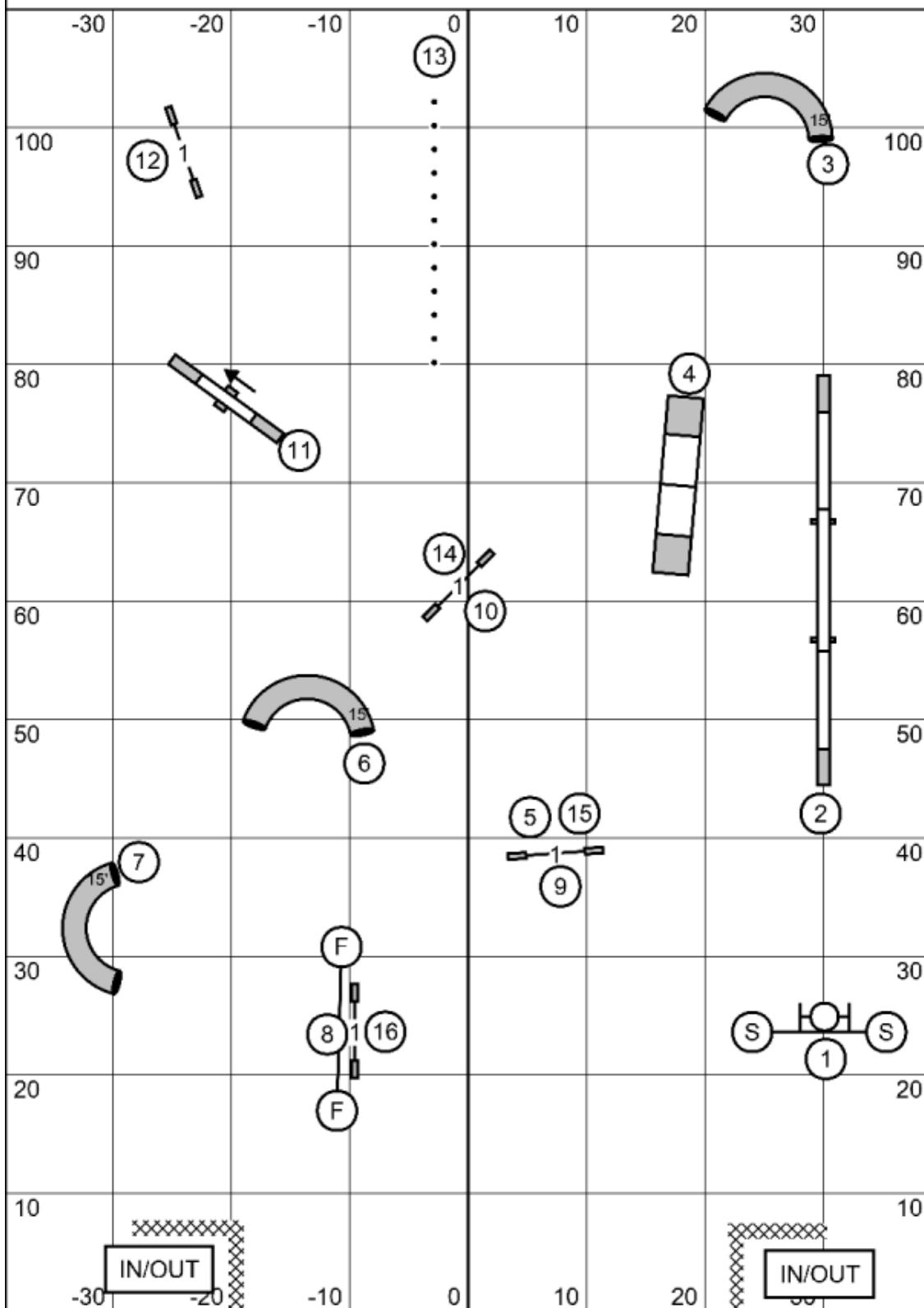
Standard Levels 5/C, Round 1



Next Dog: Please enter the ring when the team ahead of you is at #13

Standard Levels 5/C, Round 1
 Judged by: Mike Brownell
 April 3, 2026
 All Dogs Can
 Lapeer, MI

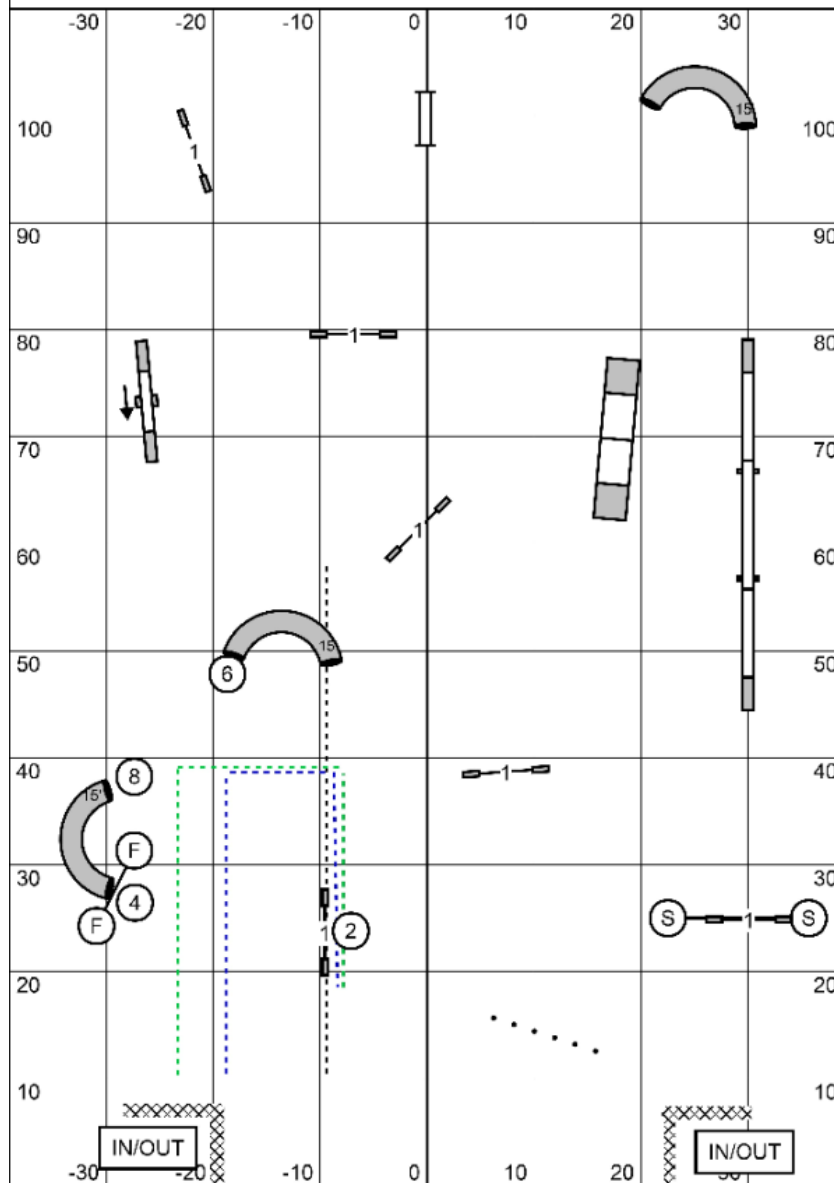
Standard Levels 5/C, Round 2



Next Dog: Please enter the ring when the team ahead of you is at #15

Standard Levels 5/C, Round 2
 Judged by: Mike Brownell
 April 3, 2026
 All Dogs Can
 Lapeer, MI

Jackpot Levels 5/C, 3, 1/2



BRIEFING: Everything may be taken twice successfully for points during the opening time. Back to back is fine as long as it is done safely. In the opening, no two sequentially numbered gamble obstacles may be taken back to back or you negate your gamble. Once the horn blows, you stop accumulating points and must successfully complete the gamble to Q within the time allowed.

* Levels 5/C: Complete the gamble behind the black line.

* Level 3: Complete the gamble behind the blue line

* Levels 1/2, Complete the gamble behind the green line

1 Point: Single bar jumps, panel jump

3 Point: Tunnels, Weaves, Double (second time) (bi-directional)

5 Point: Dog Walk, A-frame, Teeter

7 Point: Double (First first time)

Jackpot Times:

Small dogs: 35 seconds opening 24 seconds closing

Large dogs: 30 seconds opening, 22 seconds closing

Going over the total game time will result in a NQ.

The second buzzer is 6 seconds over time.

To Qualify, teams must complete the Gamble along with earning enough opening points within the time allowed

Level 1 32 point

Level 2 36 points

Level 3 40 points

Level 5, C 44 points

Specialists and Enthusiasts: Two points fewer

The start line is bi-directional

Next Dog: Please enter the ring when the team ahead of you is at the gamble

Jackpot Levels 5/C, 3, 1/2

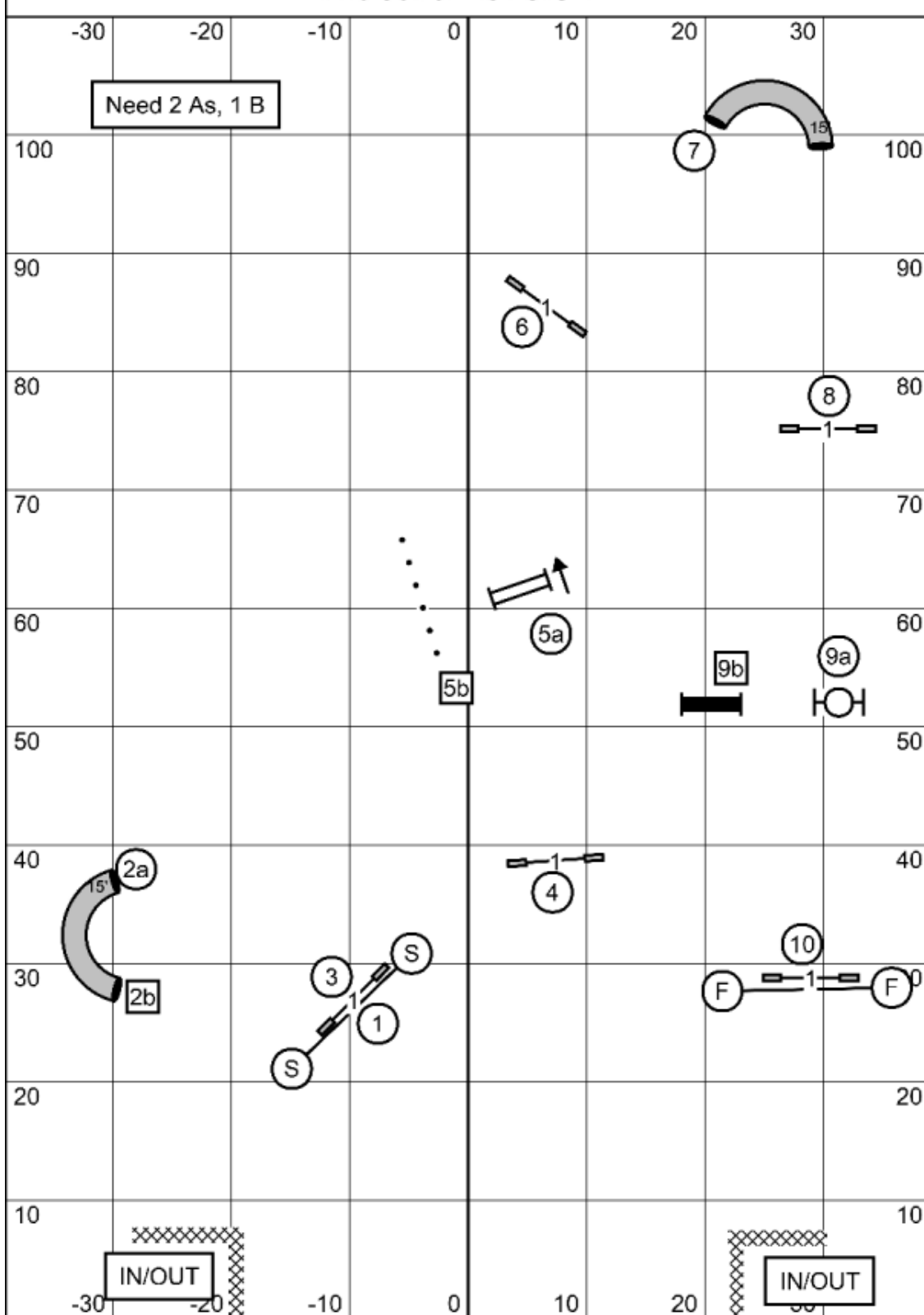
Judged by: Mike Brownell

April 3, 2026

All Dogs Can

Lapeer, MI

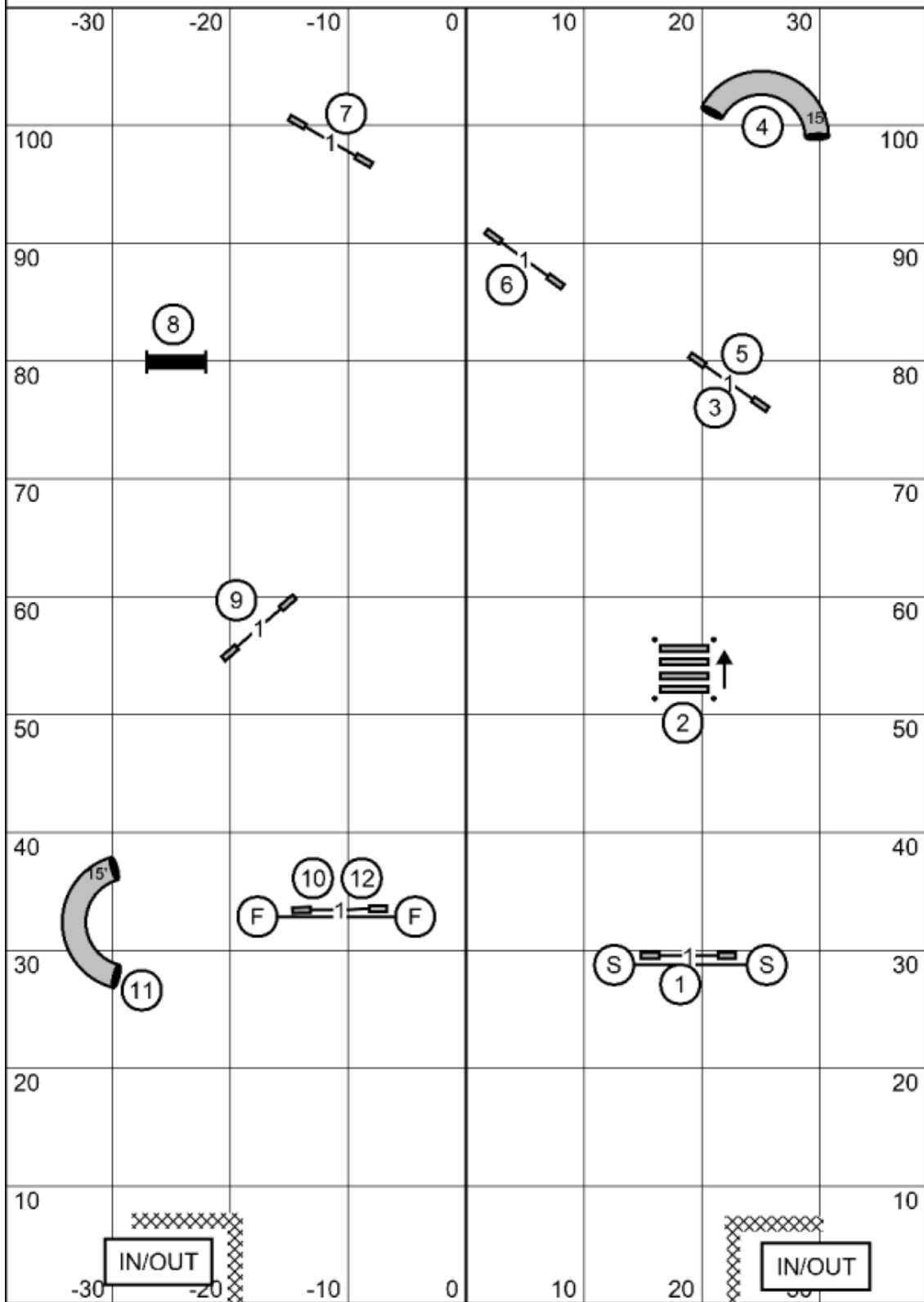
Wildcard Levels 1/2



Next Dog: Please enter the ring when the team ahead of you is at #9

Wildcard Levels 1/2
 Judged by: Mike Brownell
 April 3, 2026
 All Dogs Can
 Lapeer, MI

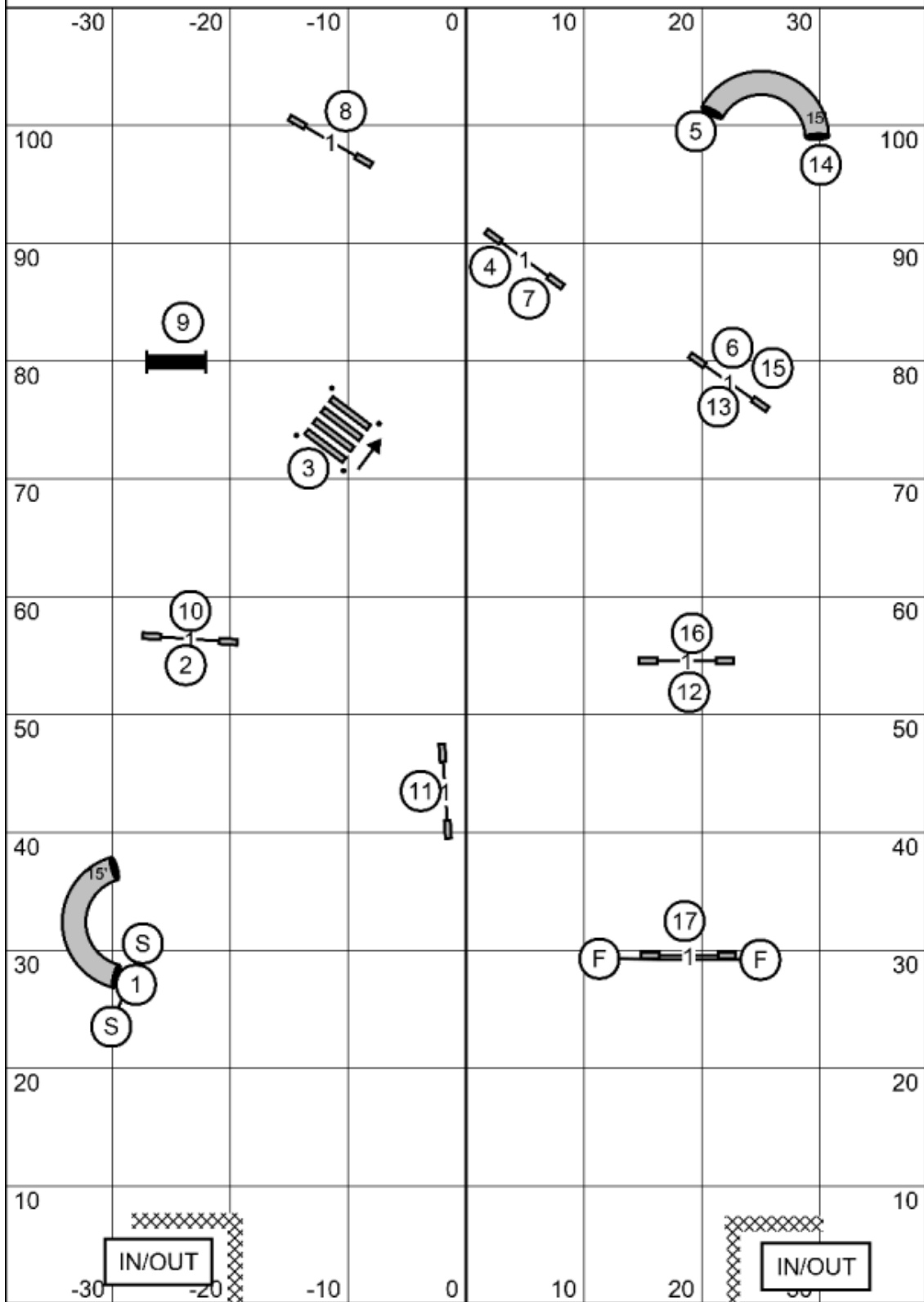
Jumpers Levels 1/2



Next Dog: Please enter the ring when the team ahead of you is at #10

Jumpers Levels 1/2
 Judged by: Mike Brownell
 April 3, 2026
 All Dogs Can
 Lapeer, MI

Jumpers Levels 3/5/C



Next Dog: Please enter the ring when the team ahead of you is at #13

Jumpers Levels 3/5/C
 Judged by: Mike Brownell
 April 3, 2026
 All Dogs Can
 Lapeer, MI