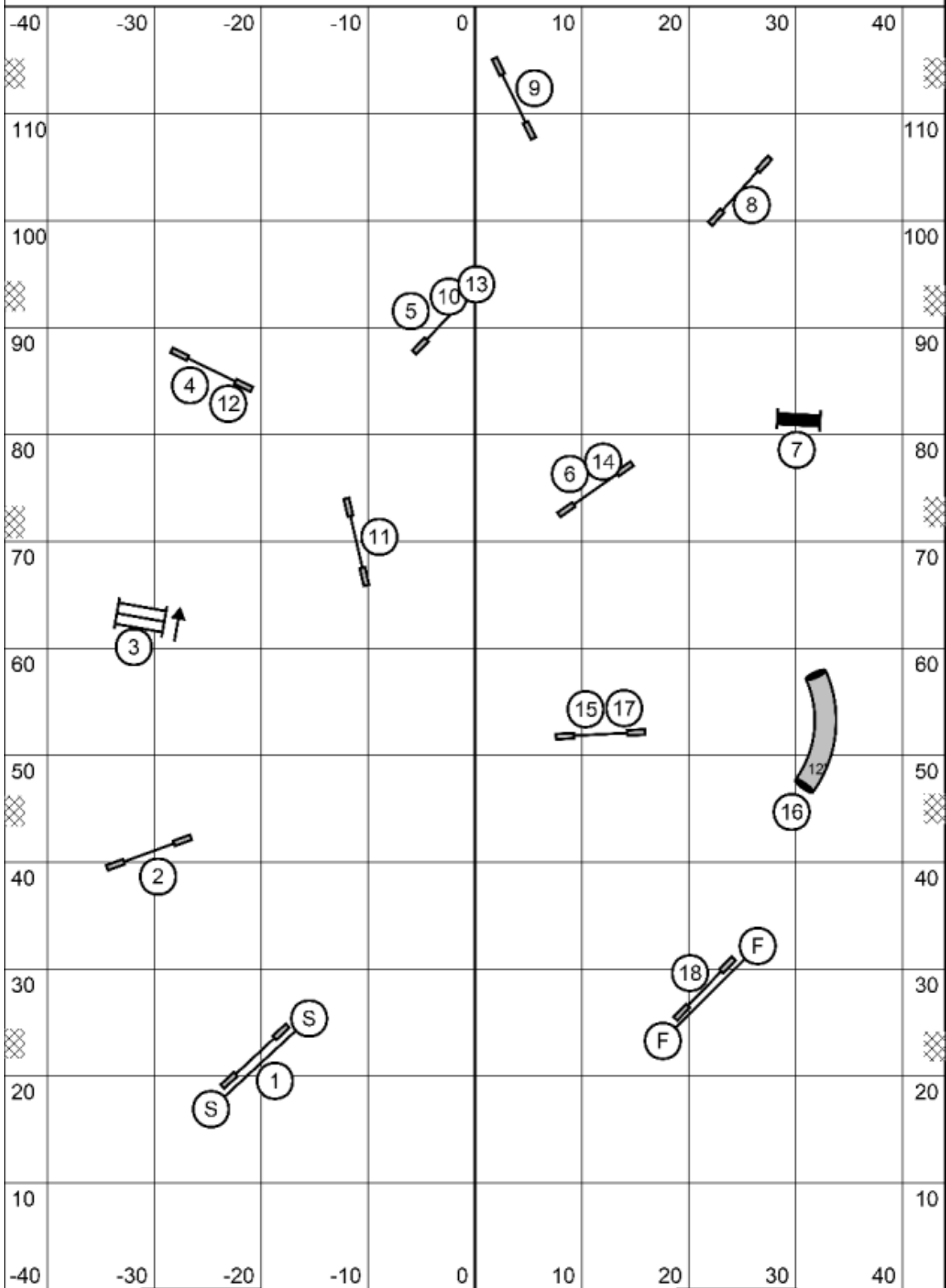


Jumpers 3, 5 & C

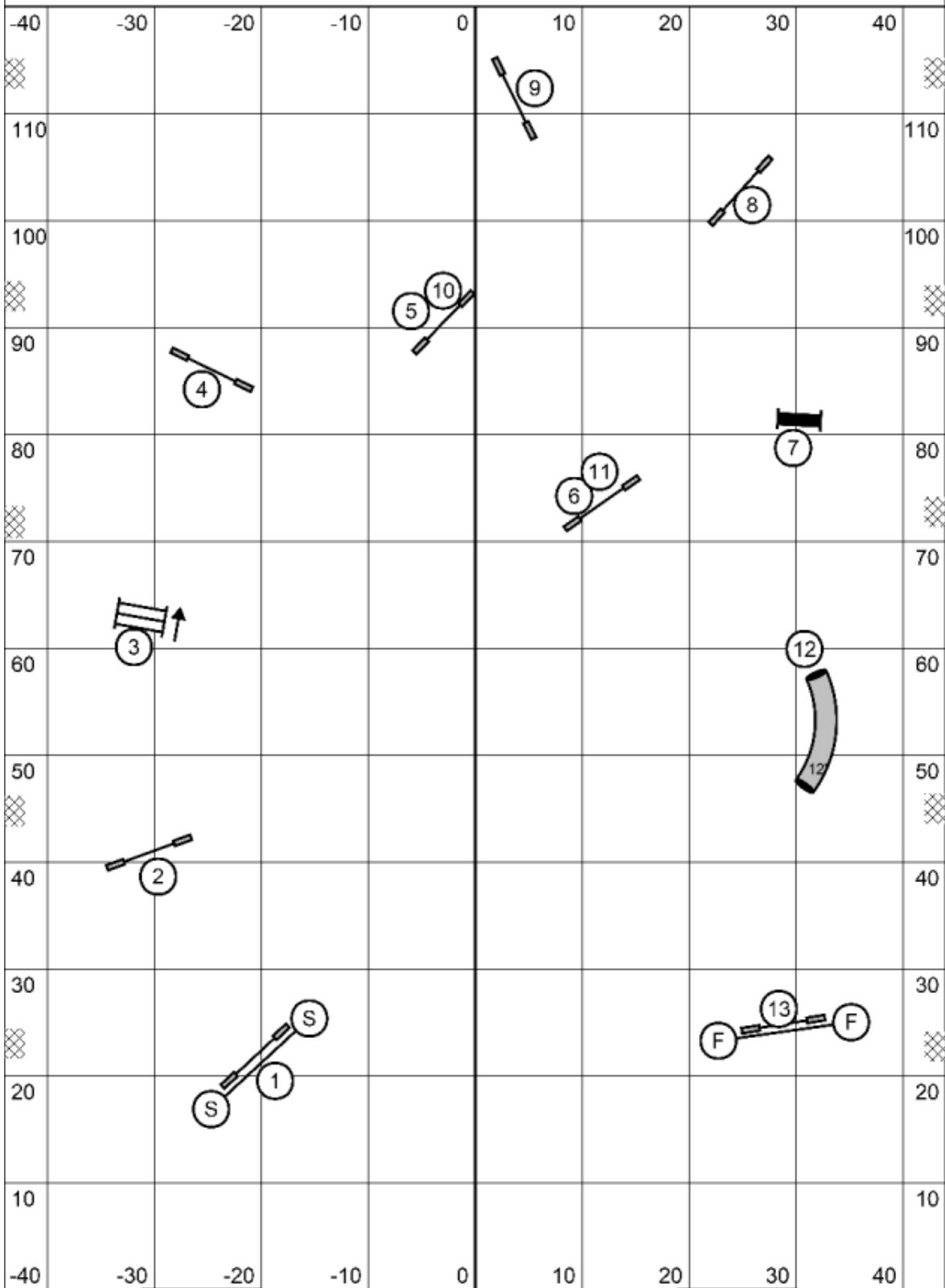


Enter/Exit

Jumpers 3, 5 & C
 Judged by Shari Vespested
 March 28, 2026
 Calusa Dog of Southwest Florida
 Punta Gorda, FL 33950

Enter/Exit

Jumpers 1 & 2

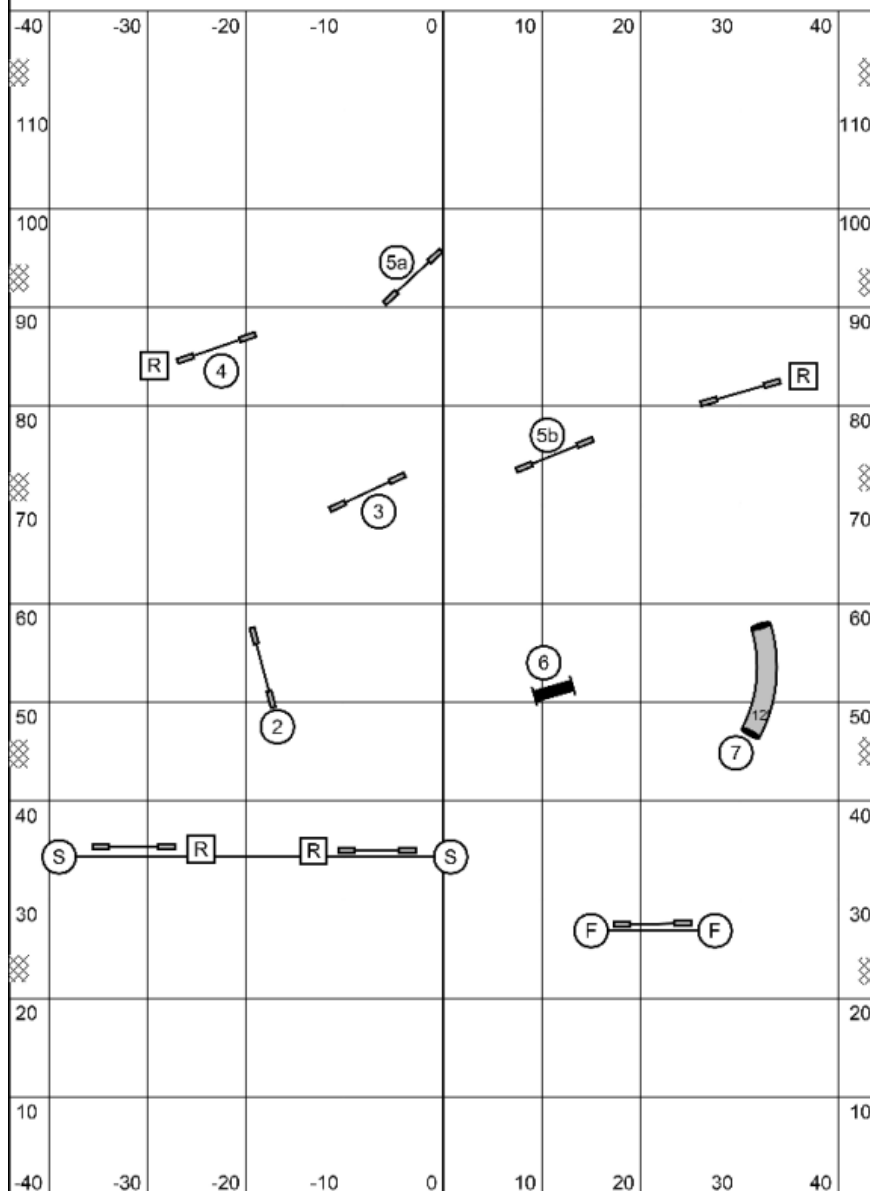


Enter/Exit

Enter/Exit

Jumpers 1 & 2
 Judged by Shari Vespested
 March 28, 2026
 Calusa Dog of Southwest Florida
 Punta Gorda, FL 33950

Snooker 1 & 2



Opening:
Startline is NOT bi-directional

All obstacles bi-directional.
#5 combo may be performed
in any any order, any direction.

Finish jump is LIVE after completion of 3rd color
and stops clock.

Closing:
#2 is bi-directional then as numbered

Finish jump bar, if displaced, isn't faulted,
but dog must take the jump to get a time.

Course times:
4", 8", 12": 55sec
16"V, 16", 20", 24": 50sec

Points needed to Qualify

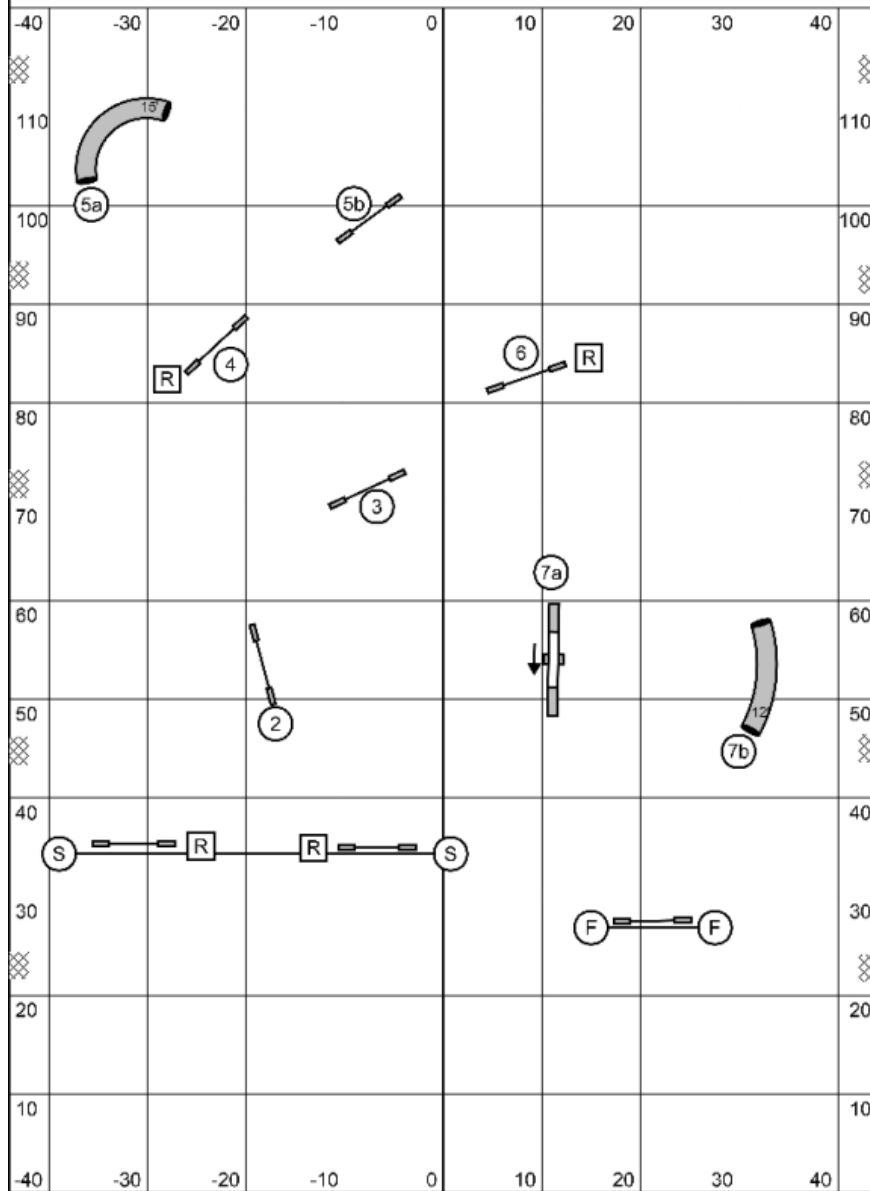
	Reg/Vet	Enth/Spec
L1	26	24
L2	28	26

Enter/Exit

Snooker 1 & 2
Judged by Shari Vespested
March 28, 2026
Calusa Dog of Southwest Florida
Punta Gorda, FL 33950

Enter/Exit

Snooker 3, 5 & C



Opening:
Startline is NOT bi-directional

All obstacles bi-directional except #7a teeter
#5 combo may be performed
in any any order, any direction.
#7 combo MUST be performed in order, 7a then 7b.

Finish jump is LIVE after completion of 3rd color
and stops clock.

Closing:
#2 is bi-directional then as numbered

Finish jump bar, if displaced, isn't faulted,
but dog must take the jump to get a time.

Course times:
4",8",12": 55sec
16"V,16",20",24": 50sec

Points needed to Qualify

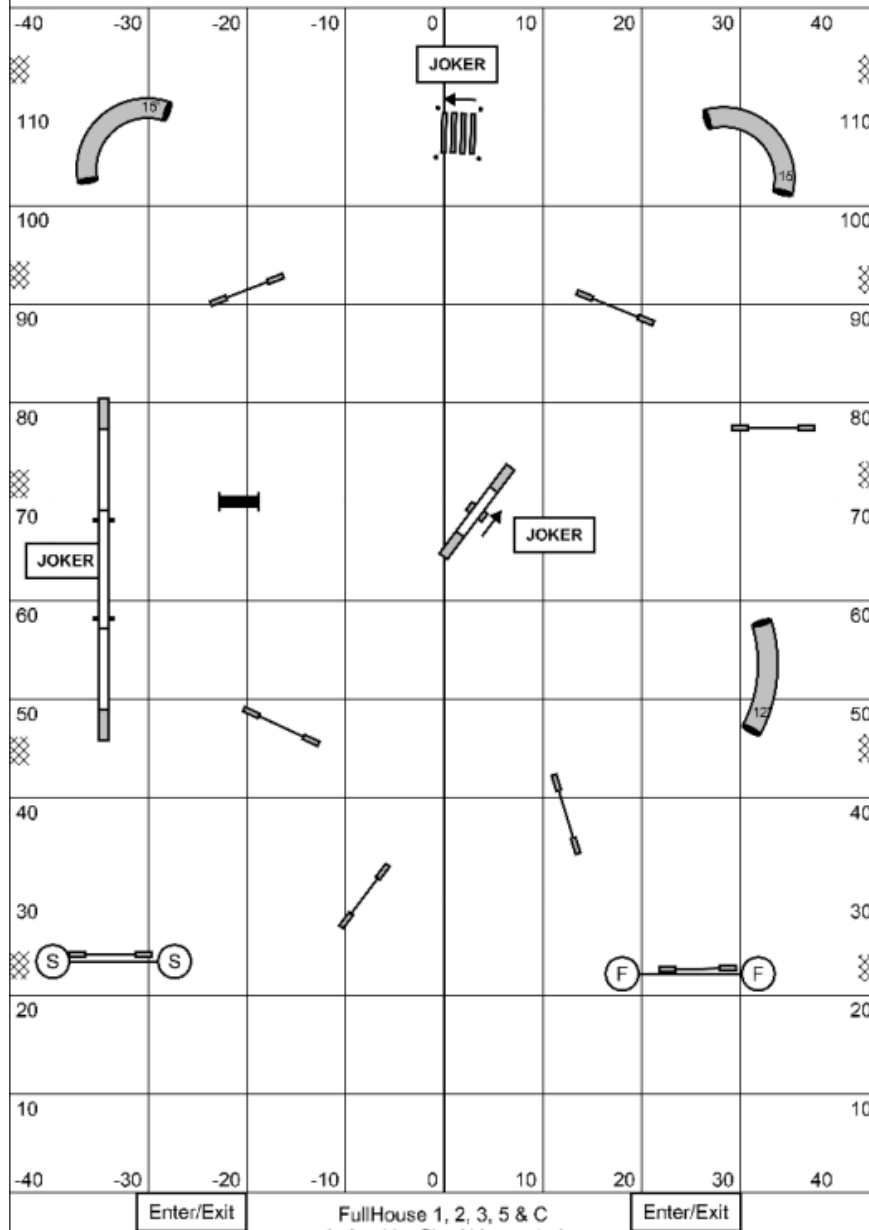
	Reg/Vet	Enth/Spec
L3	30	28
L5C	32	30

Enter/Exit

Snooker 3, 5 & C
Judged by Shari Vespested
March 28, 2026
Calusa Dog of Southwest Florida
Punta Gorda, FL 33950

Enter/Exit

FullHouse 1, 2, 3, 5 & C



Point Values:

Jokers/5pt: dogwalk, teeter, broad jump

3pts: tunnels, panel jump

1pt: bar jumps

Minimum 1 Joker, two 3pt, three 1pt obstacles
and enough points to qualify in your level.

All obstacles may be taken 2X successfully for points.

Startline is bi-directional.

Finish jump is live at all times.

At or before the horn, go to the finish jump.

The finish jump has no point value, only stops the clock.

It may be taken in either direction.

After 5 seconds you will lose one point

for every full second over time.

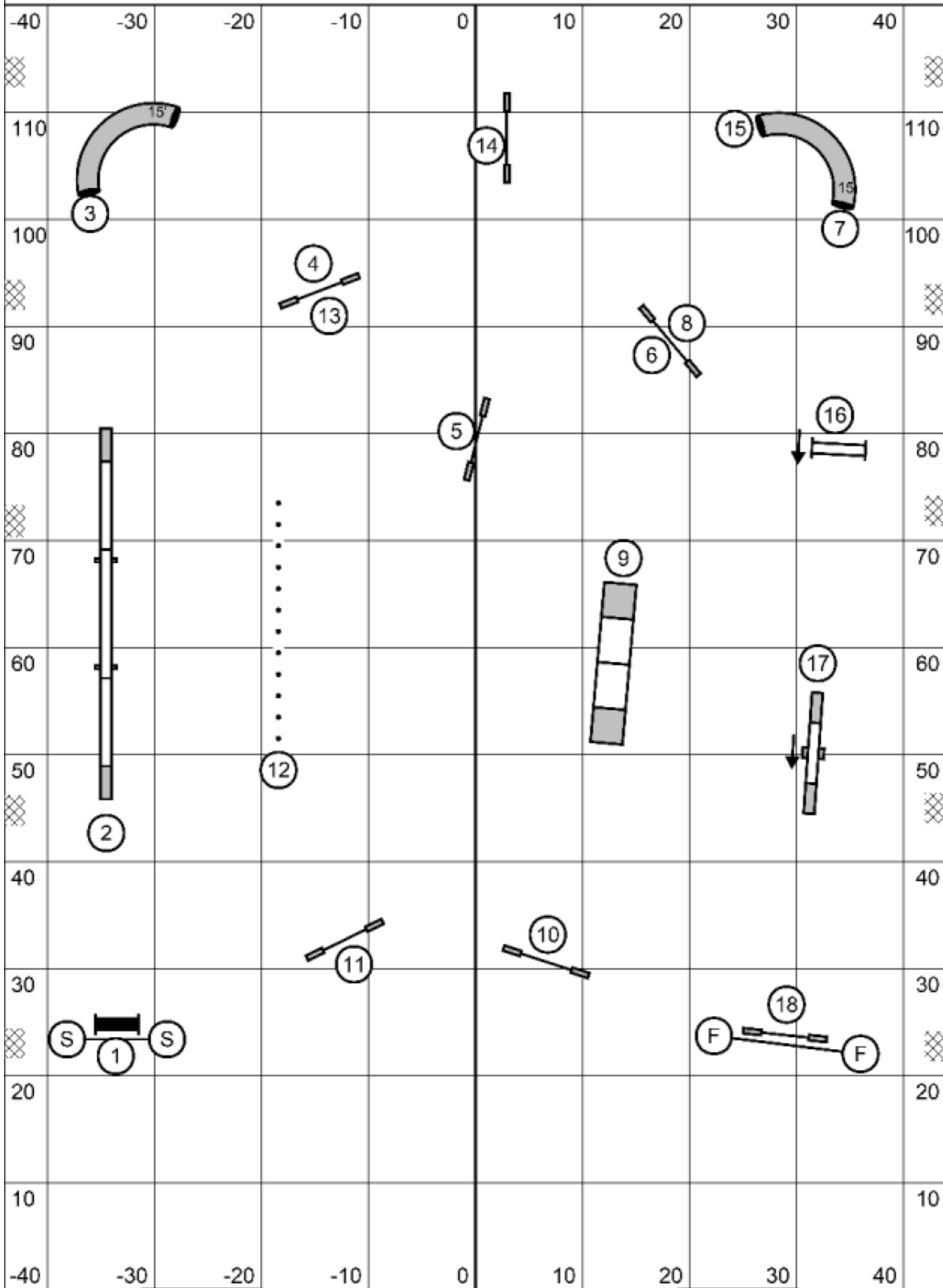
Big dogs: 35 + 5 sec. Small dogs: 40 + 5 sec.

Points needed to qualify:

	Reg/Vets	Enth/Spec
Level 1	19	17
Level 2	21	19
Level 3	23	21
Levels 5,C	25	23

FullHouse 1, 2, 3, 5 & C
Judged by Shari Vespested
March 28, 2026
Calusa Dog of Southwest Florida
Punta Gorda, FL 33950

Standard 5 & C

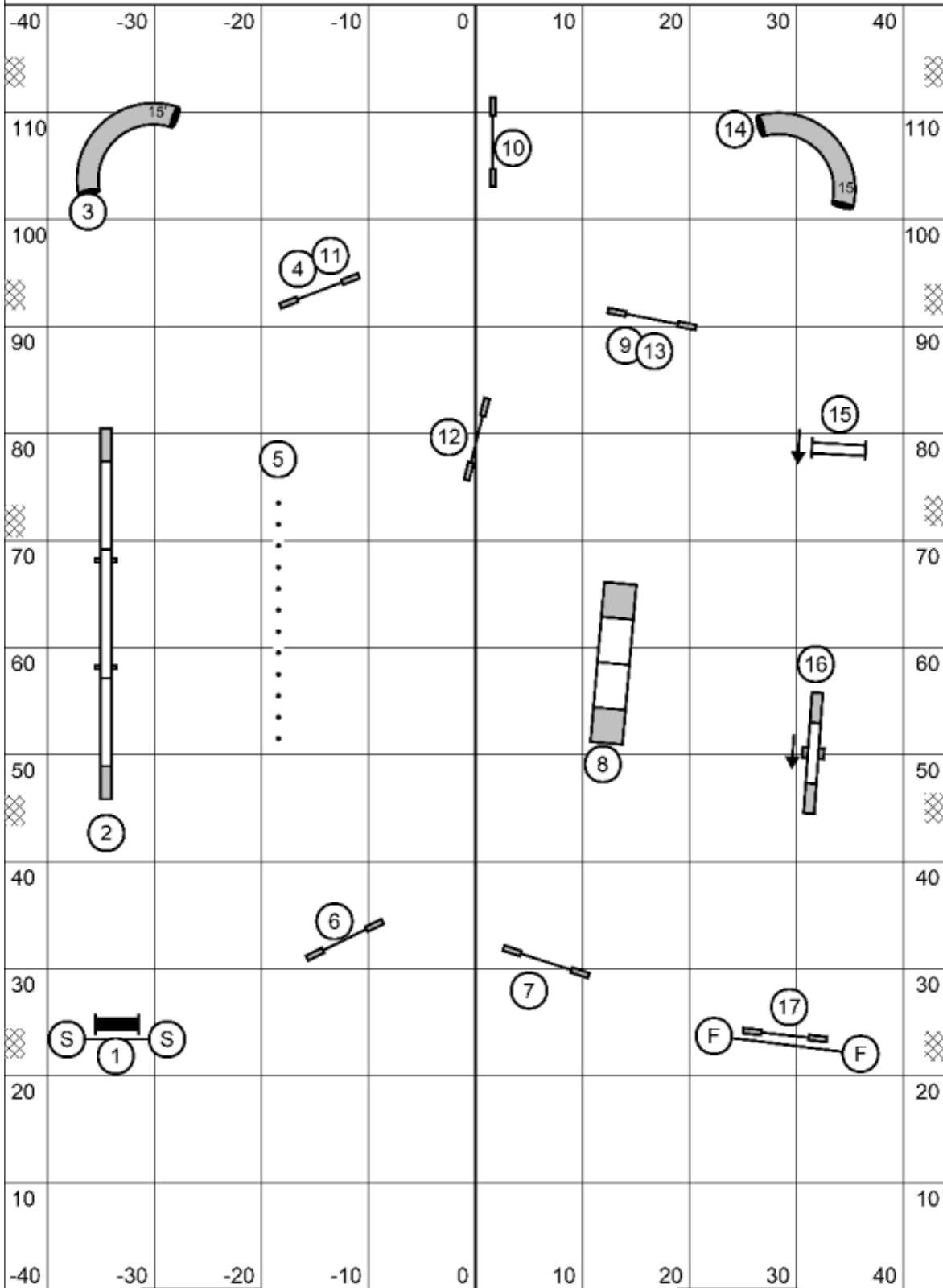


Enter/Exit

Enter/Exit

Standard 5 & C
 Judged by Shari Vespested
 March 28, 2026
 Calusa Dog of Southwest Florida
 Punta Gorda, FL 33950

Standard 3

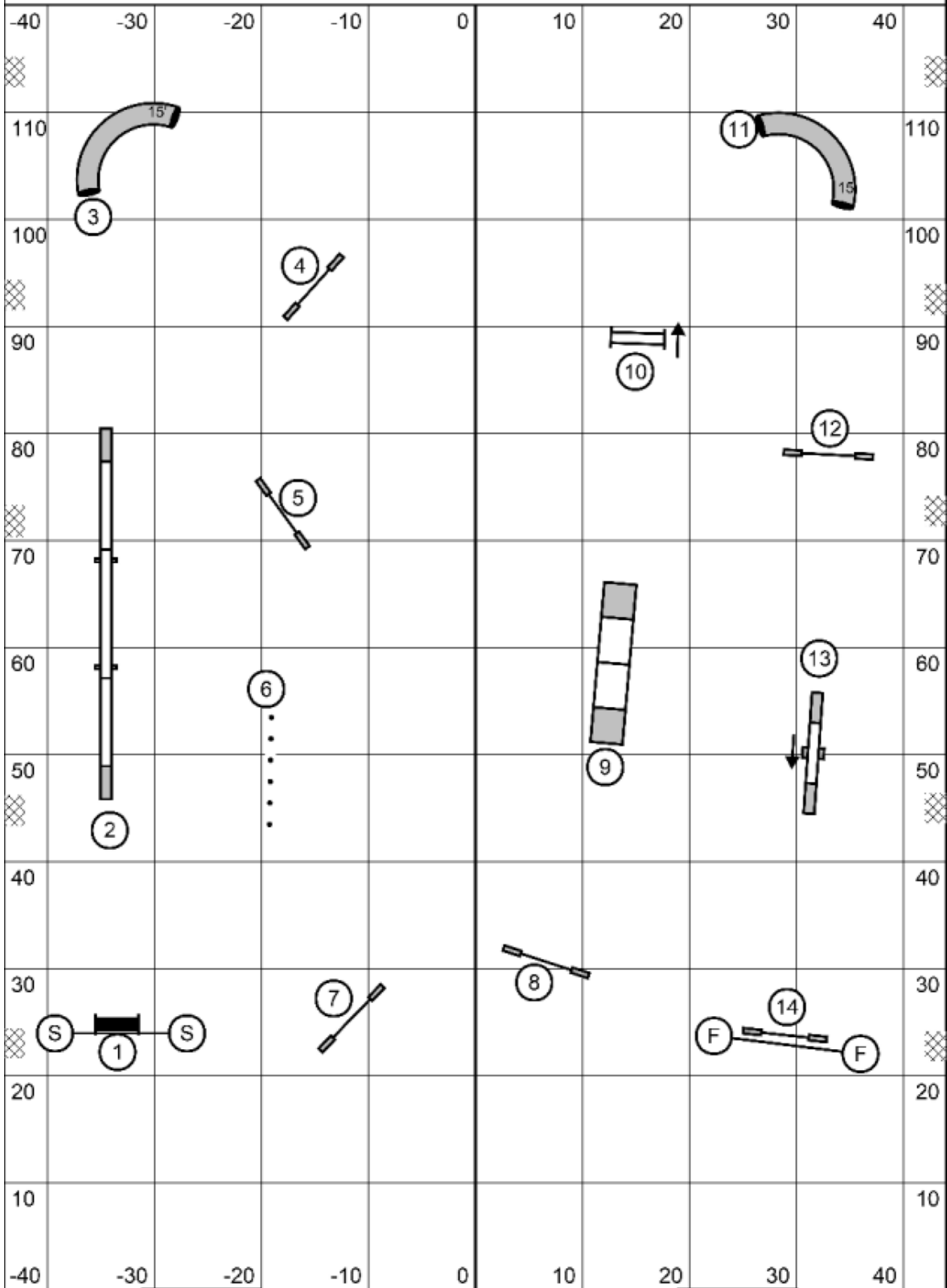


Enter/Exit

Enter/Exit

Standard 3
 Judged by Shari Vespested
 March 28, 2026
 Calusa Dog of Southwest Florida
 Punta Gorda, FL 33950

Standard 2

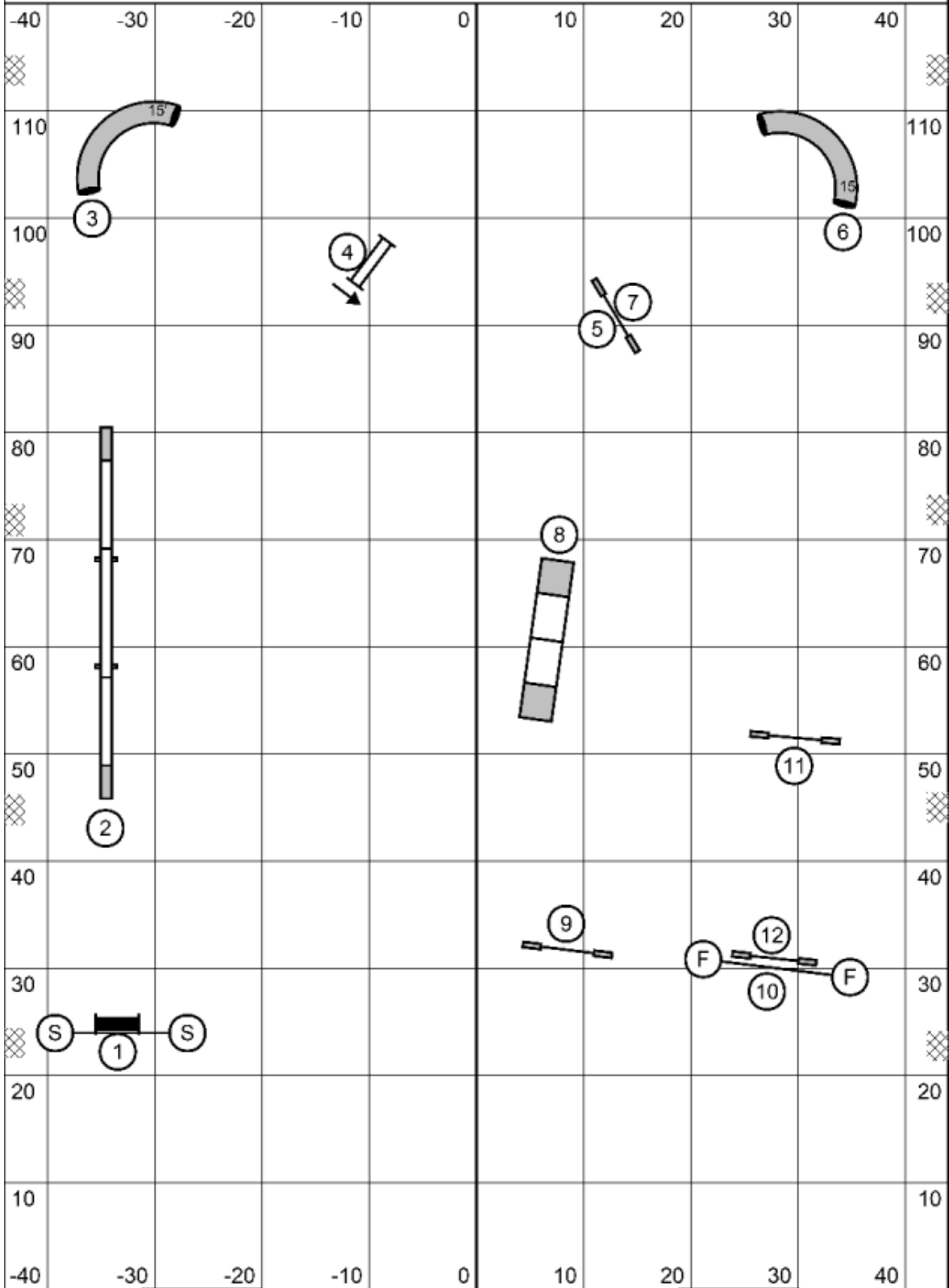


Enter/Exit

Enter/Exit

Standard 2
 Judged by Shari Vespested
 March 28, 2026
 Calusa Dog of Southwest Florida
 Punta Gorda, FL 33950

Standard 1



Enter/Exit

Standard
 Judged by Shari Vespested
 March 28, 2026
 Calusa Dog of Southwest Florida
 Punta Gorda, FL 33950

Enter/Exit