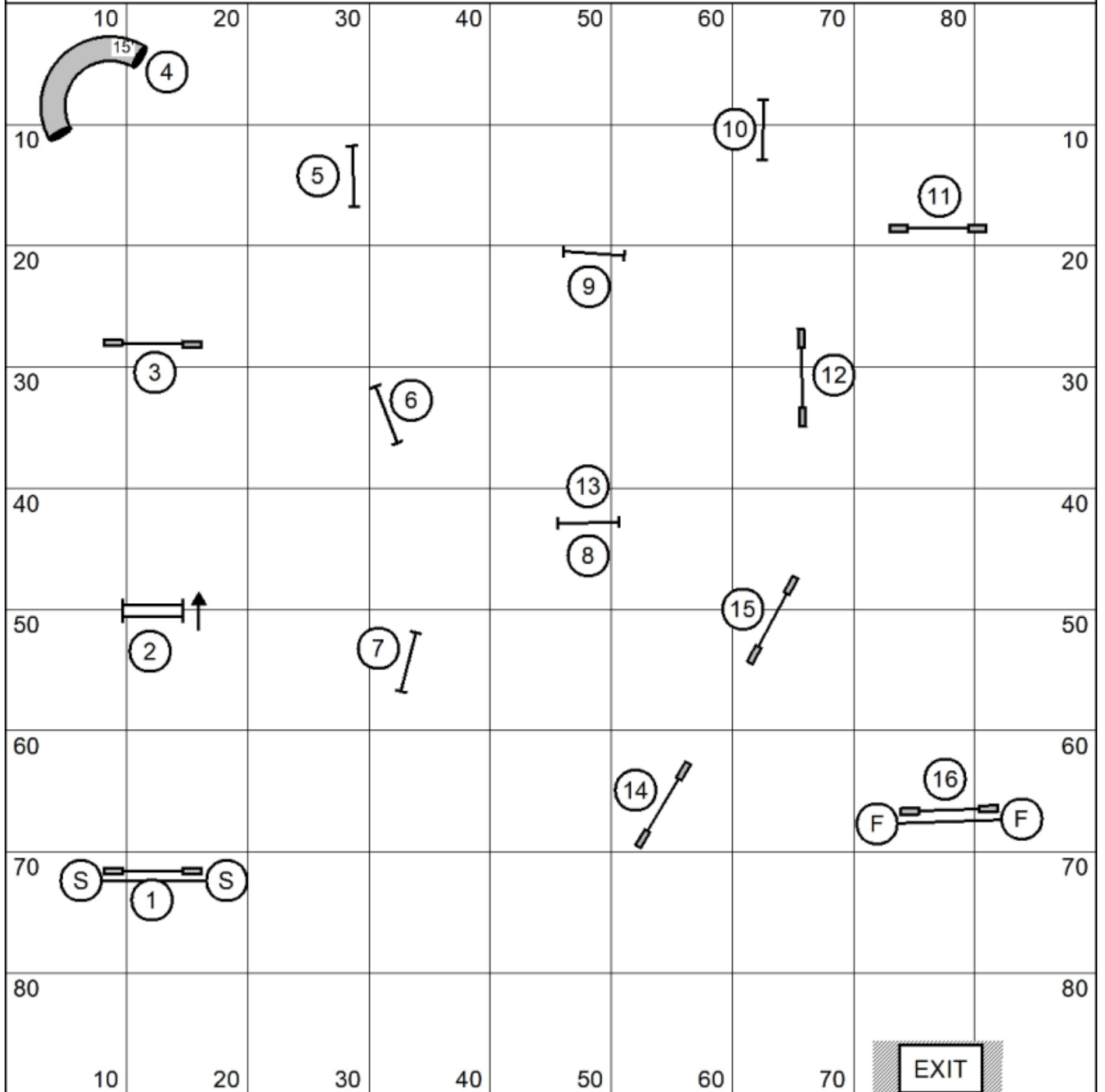


Jumpers Levels 3/5/C



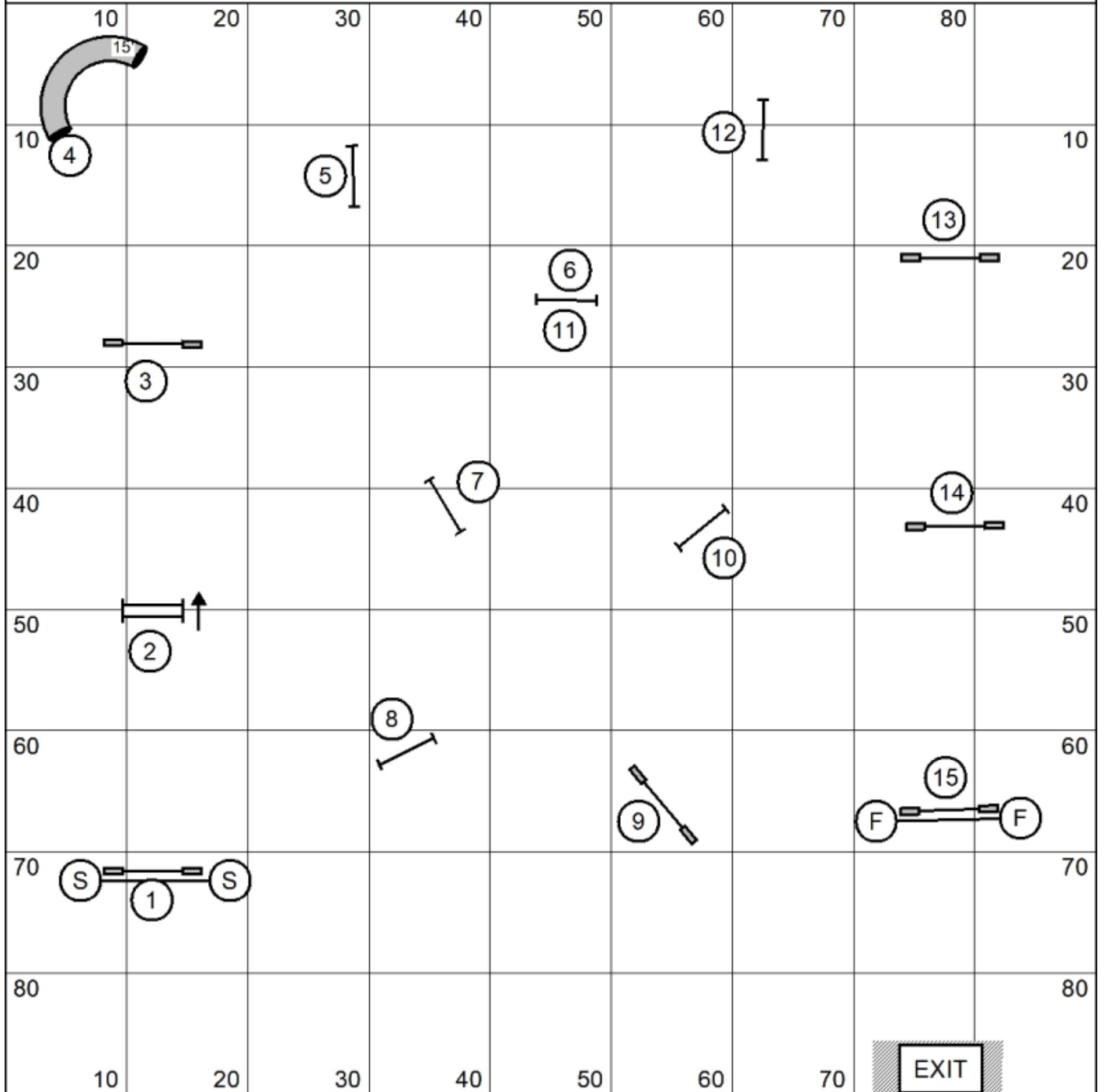
ENTER

EXIT

Jumpers Levels 3/5/C
 Judged by: Melissa Marinovich
 March 22, 2026
 Southern CT Agility Team
 Hamden, CT

Next Dog: Please enter when the previous dog is headed to #11.

Jumpers Levels 1/2



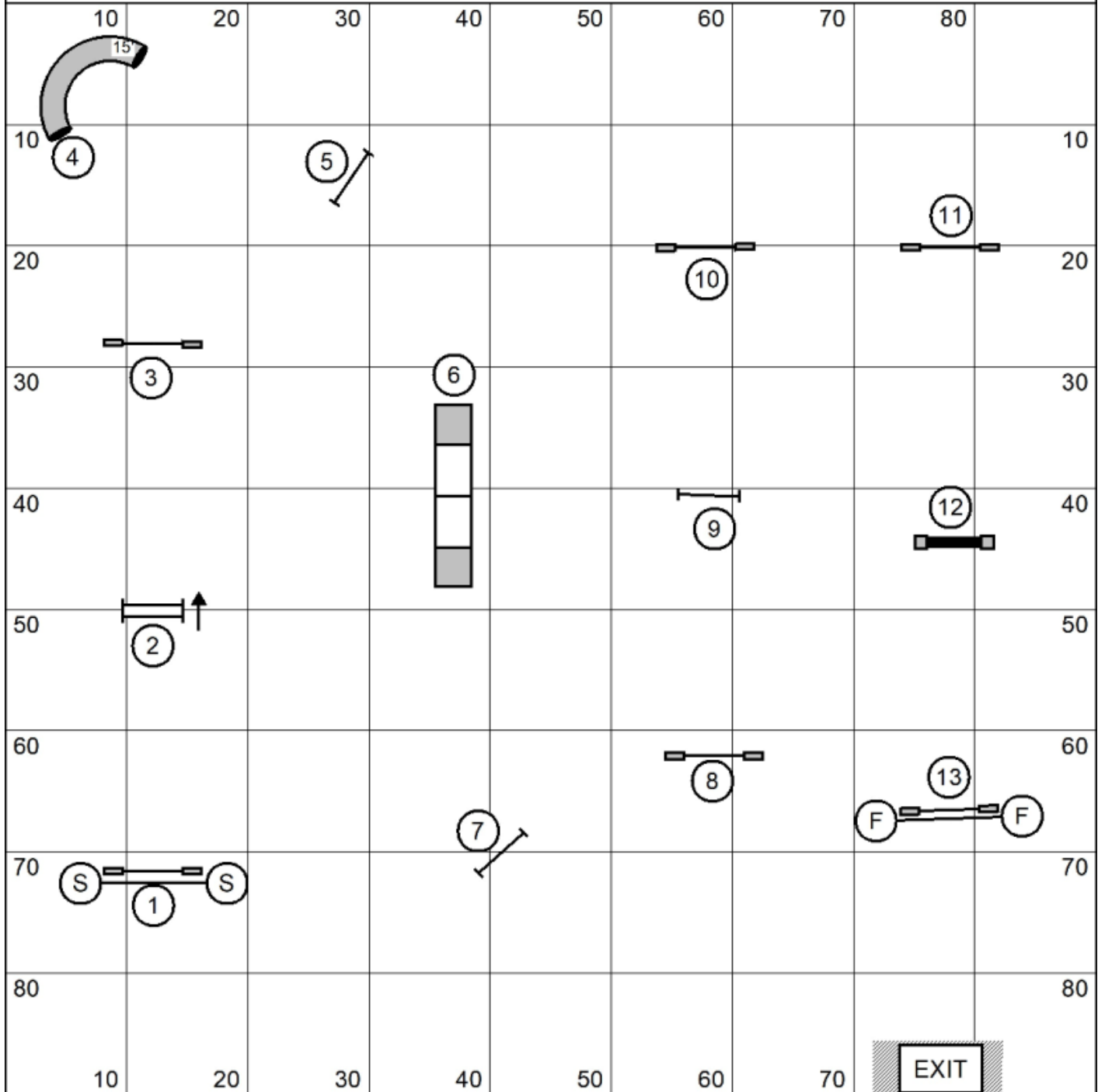
ENTER

EXIT
CHUTE

Jumpers Levels 1/2
 Judged by: Melissa Marinovich
 March 22, 2026
 Southern CT Agility Team
 Hamden, CT

Next Dog: Please enter when the previous dog is headed to #11.

Standard Level 1



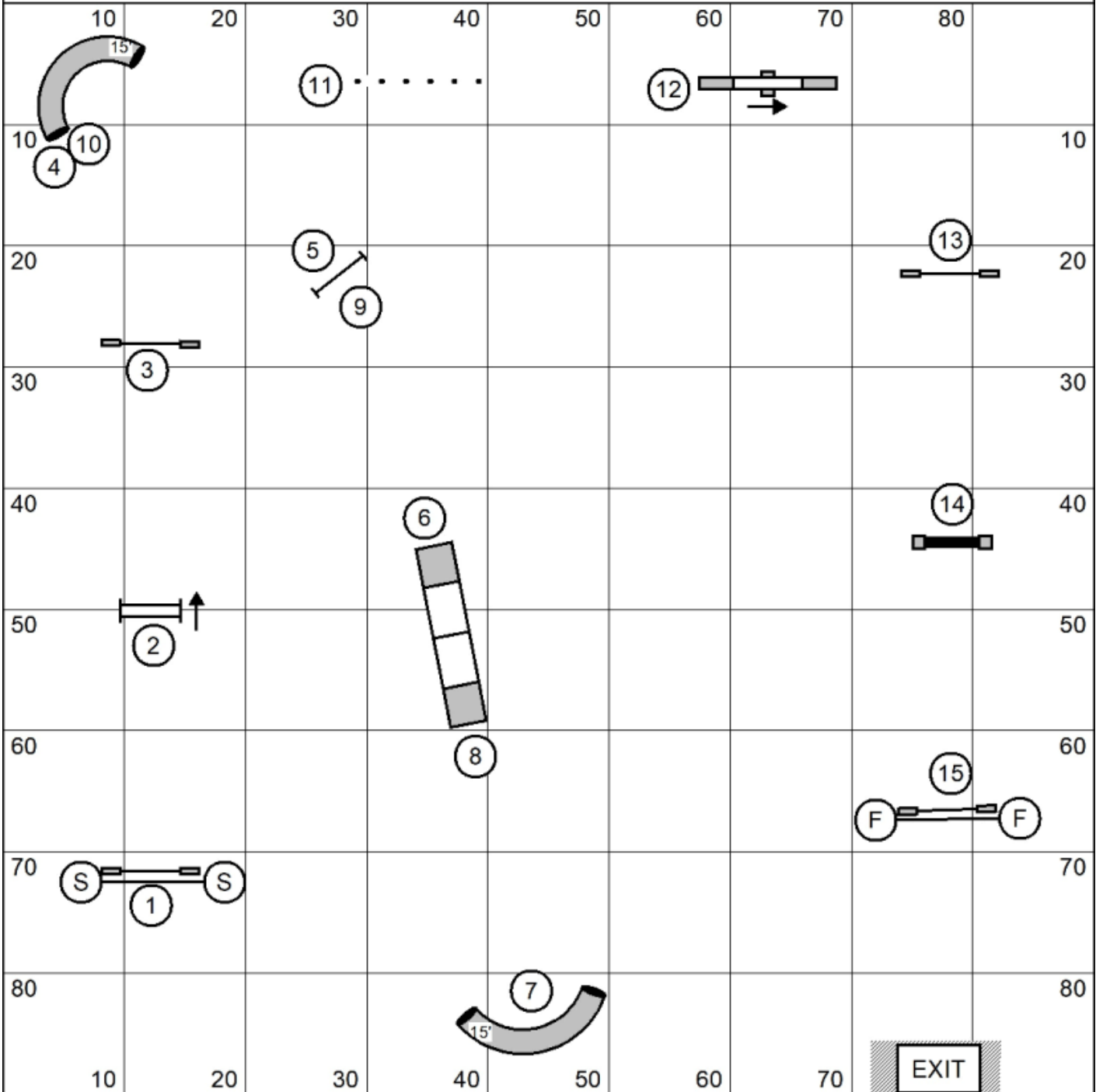
ENTER

EXIT
CHUTE

Standard Level 1
 Judged by: Melissa Marinovich
 March 22, 2026
 Southern CT Agility Team
 Hamden, CT

Next Dog: Please enter when the previous dog is headed to #9.

Standard Levels 2/3



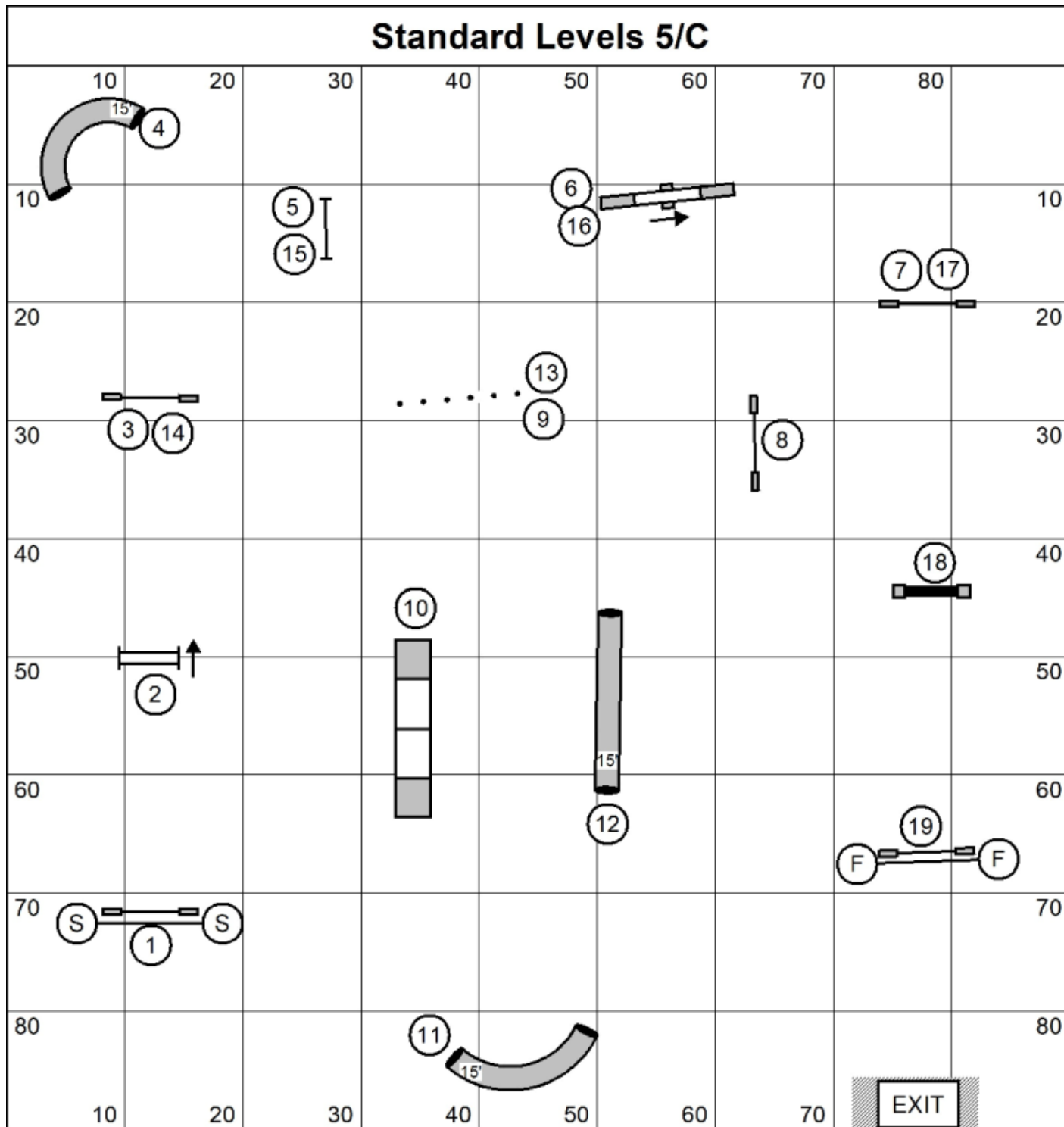
ENTER

EXIT

Standard Levels 2/3
 Judged by: Melissa Marinovich
 March 22, 2026
 Southern CT Agility Team
 Hamden, CT

Next Dog: Please enter when the previous dog is headed to #11.

Standard Levels 5/C



ENTER

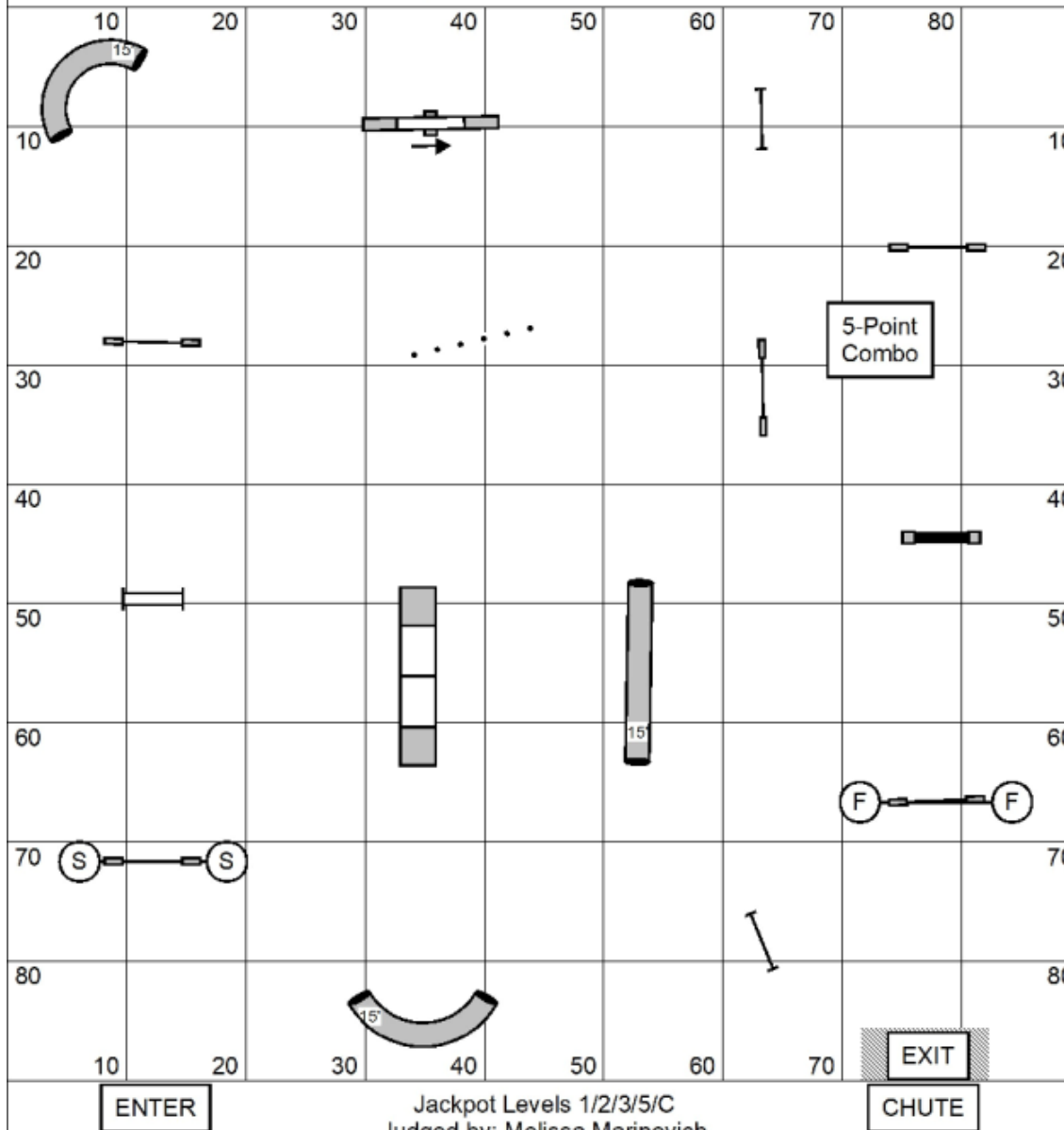
CHUTE

Standard Levels 5/C
 Judged by: Melissa Marinovich
 March 22, 2026
 Southern CT Agility Team
 Hamden, CT

Next Dog: Please enter when the previous dog is headed to #15.

Jackpot Levels 1/2/3/5/C

National Big Bang Day!



*This Jackpot will go out with a bang! When you hear the first buzzer, head for the puppy cannon (aka straight tunnel)! The gamble may ONLY be done after the first buzzer has sounded. Once your dog completes the puppy cannon after the first buzzer, every obstacle successfully completed after is worth DOUBLE points!! You'll also get a bonus 15 pts. for making it out of the puppy cannon!

* All obstacles can be used twice successfully for points before the first buzzer. After the first buzzer, all obstacles re-set and may be used twice again for points. You can double the same obstacle twice, but then it is dead.

* In order to qualify, you must have at least ONE doubled obstacle.

* If your cannon ball is a dud (you fault the first obstacle after the cannon), you've negated your gamble.

* You may go to the finish jump at any time to end your run. It is automatically live after the first buzzer. Finish jump is worth an additional 5 points (this point value CANNOT be doubled.)

- 1 Point: Single bar jumps
- 3 Point: Tunnels, Weaves, Wall, 2nd time Double
- 5 Point: Teeter, Combo (in flow), A-frame
- 7 Point: 1st time over the Double

Jackpot Times:

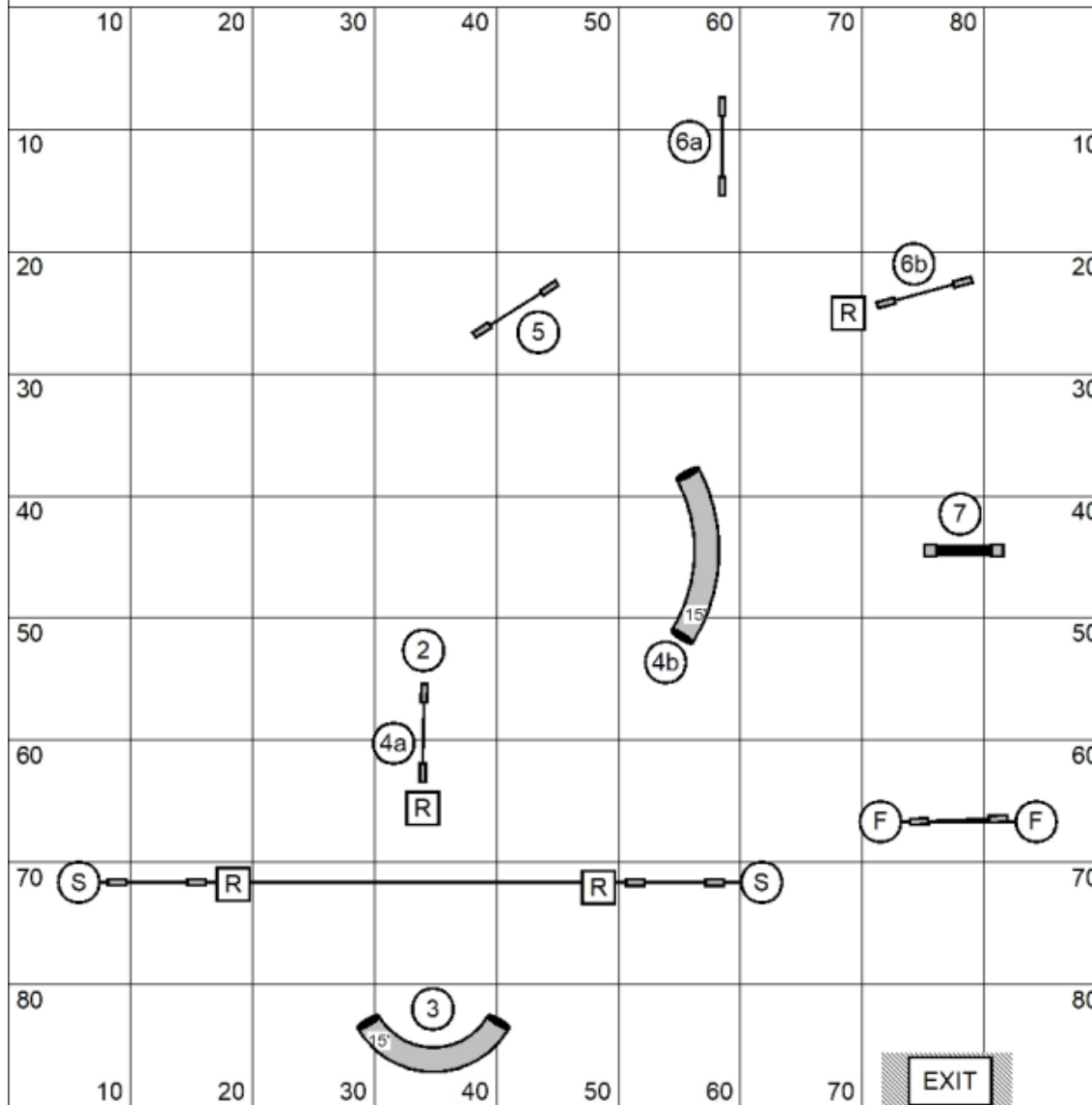
Small dogs: 35 seconds opening 20 seconds closing
 Large dogs: 30 seconds opening, 18 seconds closing
 Going over the total game time will result in a NQ.
 The second buzzer is 6 seconds over time.

To Qualify, teams must complete the Gamble along with earning enough opening points within the time allowed

- Level 1 32 point
- Level 2 36 points
- Level 3 40 points
- Level 5, C 44 points
- Specialists and Enthusiasts: Two points fewer

Jackpot Levels 1/2/3/5/C
 Judged by: Melissa Marinovich
 March 22, 2026
 Southern CT Agility Team
 Hamden, CT

Snooker Levels 1/2



BRIEFING

*In the OPENING:

Everything is bi-/multi- directional, except the Start Line.

*You may repeat colors, but reds may only be used once.

*In the CLOSING:

Everything must be taken as labeled.

#2 and #3 are bi-directional in the closing.

*If you hear me say "Thank You" - please proceed to the Finish Jump to stop the clock.

Points:

Level 1 26 points

Level 2 28 points

Level 3 30 points

Level 5,C 32 points

Enth/Spec - 2 points fewer at each level.

Time:

Small Dogs: 55 seconds

Large Dogs: 50 seconds

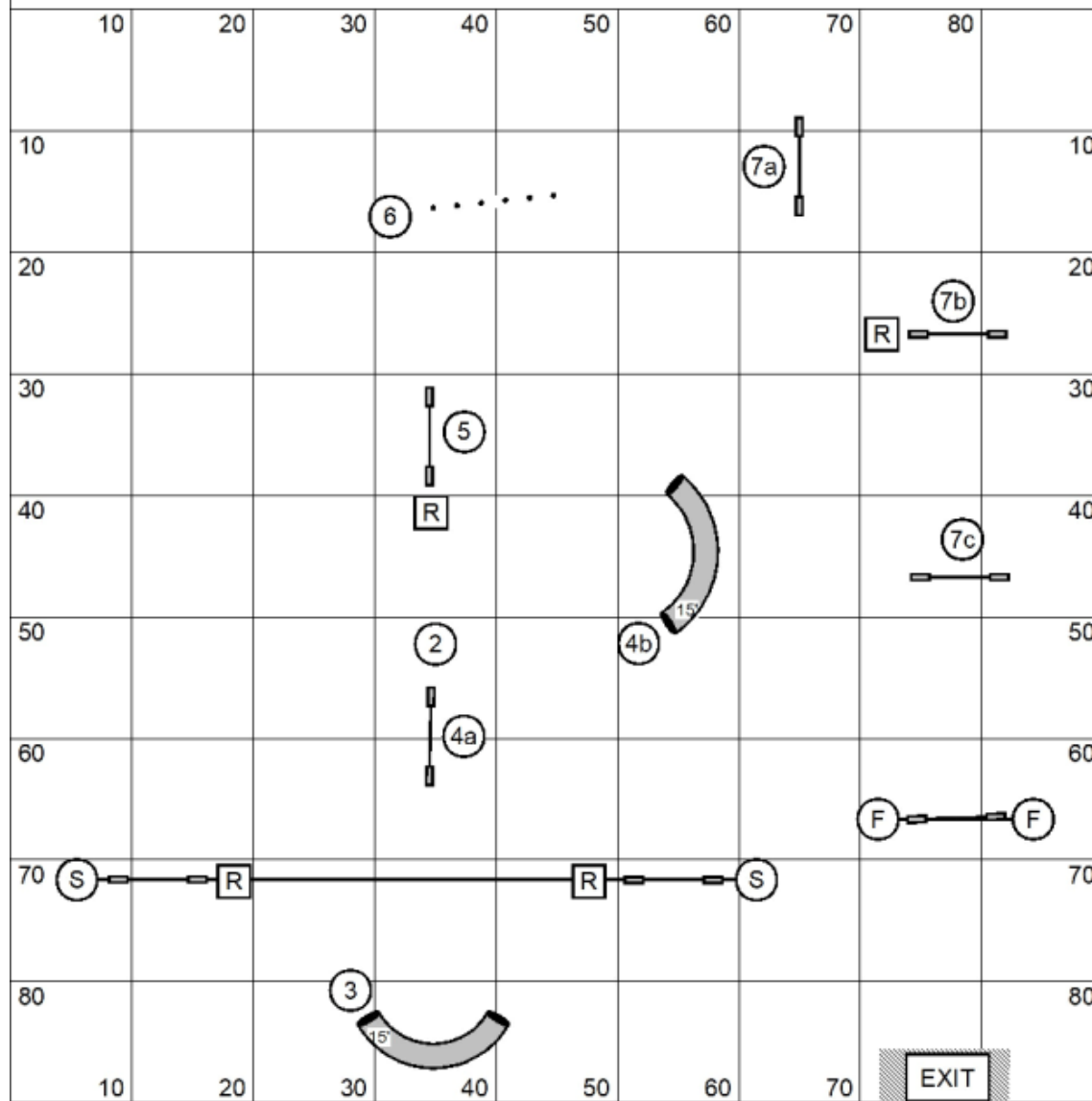
16" Vets jumping 12" get Large Dog Time

ENTER

Snooker Levels 1/2
Judged by: Melissa Marinovich
March 22, 2026
Southern CT Agility Team
Hamden, CT

EXIT
CHUTE

Snooker Levels 3/5/C



BRIEFING

*In the OPENING:
Everything is bi-/multi- directional, including the Start Line.

*You may repeat colors, but reds may only be used once.

*In the CLOSING:
Everything must be taken as labeled.

#2 IS bi-directional in the closing.

*If you hear me say "Thank You" - please proceed to the Finish Jump to stop the clock.

Points:

Level 1	26 points
Level 2	28 points
Level 3	30 points
Level 5,C	32 points
Enth/Spec	- 2 points fewer at each level.

Time:

Small Dogs:	55 seconds
Large Dogs:	50 seconds
16" Vets jumping 12" get Large Dog Time	

ENTER

Snooker Levels 3/5/C
Judged by: Melissa Marinovich
March 22, 2026
Southern CT Agility Team
Hamden, CT

EXIT