

Jackpot Levels 1/2/3/5/C

BRIEFING:

ICE, ICE, Baby

- * Celebrate winter with your pup and score some big points!
- * You may complete your gamble at any time. You may earn gamble points for two gambles, but one must be before the first buzzer and one after the first buzzer.
- * Using the labeled obstacles (all wing jumps except the finish and combo are "I", all tunnels are "C", all non-wing jumps are "C") Spell I-C-E. Other obstacles can be done in between the letters. Once you have completed spelling ICE, you will earn 20 points and the next obstacle your dog takes is eligible for double points.
- * If you knock one of the I or E bars, you will need to start spelling over again.
- * The finish is live AFTER the first horn. Obstacles taken on your way to the finish still count for regular points. The finish stops the clock and is worth 5 points of taken successfully.
- * In order to qualify, your dog must 1) get the required points for your level, 2) achieve at least one gamble, and 3) get to the finish in time.

1 Point: Single bar jumps
 3 Point: Weaves, Tunnels, Broad
 5 Point: A-frame, Teeter, Combo (In flow)

Jackpot Times:
 Small dogs: 35 seconds opening 20 seconds closing
 Large dogs: 30 seconds opening, 18 seconds closing
 Going over the total game time will result in a NQ.
 The second buzzer is 6 seconds over time.

Level 1	32 points
Level 2	36 points
Level 3	40 points
Level 5, C	44 points
Specialists & Enthusiasts: Two points fewer	

The start and finish lines are bi-directional.

Next Dog: Please enter the ring when the team ahead of you is heading for the finish

Jackpot Levels 1/2/3/5/C
 Judged by: Mike Brownell
 December 30, 2025
 Canine Sports & Games
 Lapeer, MI

Next Dog: Please enter the ring when the team ahead of you is heading for the finish

Jackpot Levels 1/2/3/5/C
Judged by: Mike Brownell
December 30, 2025
Canine Sports & Games
Lapeer, MI

BRIEFING:

ICE, ICE, Baby

* Celebrate winter with your pup and score some big points!

* You may complete your gamble at any time. You may earn gamble points for two gambles, but one must be before the first buzzer and one after the first buzzer.

* Using the labeled obstacles (all wing jumps except the finish and combo are "I", all tunnels are "C", all non-wing jumps are "C") Spell I-C-E. Other obstacles can be done in between the letters. Once you have completed spelling ICE, you will earn 20 points and the next obstacle your dog takes is eligible for double points.

* If you knock one of the I or E bars, you will need to start spelling over again.

* The finish is live AFTER the first horn. Obstacles taken on your way to the finish still count for regular points. The finish stops the clock and is worth 5 points of taken successfully.

* In order to qualify, your dog must 1) get the required points for your level, 2) achieve at least one gamble, and 3) get to the finish in time.

1 Point: Single bar jumps

3 Point: Weaves, Tunnels, Broad

5 Point: A-frame, Teeter, Combo (In flow)

Jackpot Times:

Small dogs: 35 seconds opening 20 seconds closing

Large dogs: 30 seconds opening, 18 seconds closing

Going over the total game time will result in a NQ.

The second buzzer is 6 seconds over time.

Level 1	32 points
---------	-----------

Level 1	32 points
Level 2	36 points

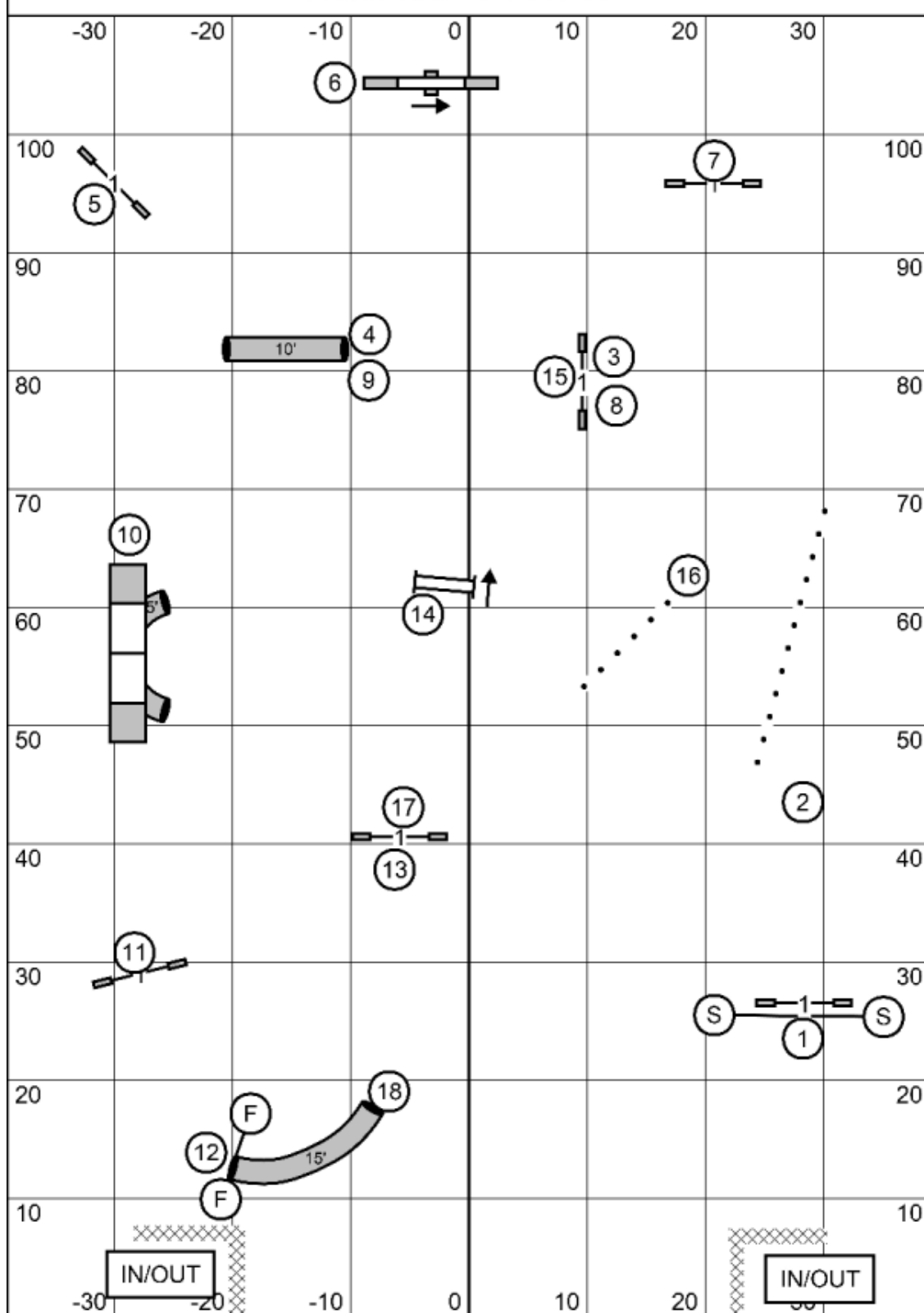
Level 2	30 points
Level 3	40 points

Level 5, C	44 points
------------	-----------

Specialists & Enthusiasts: Two points fewer

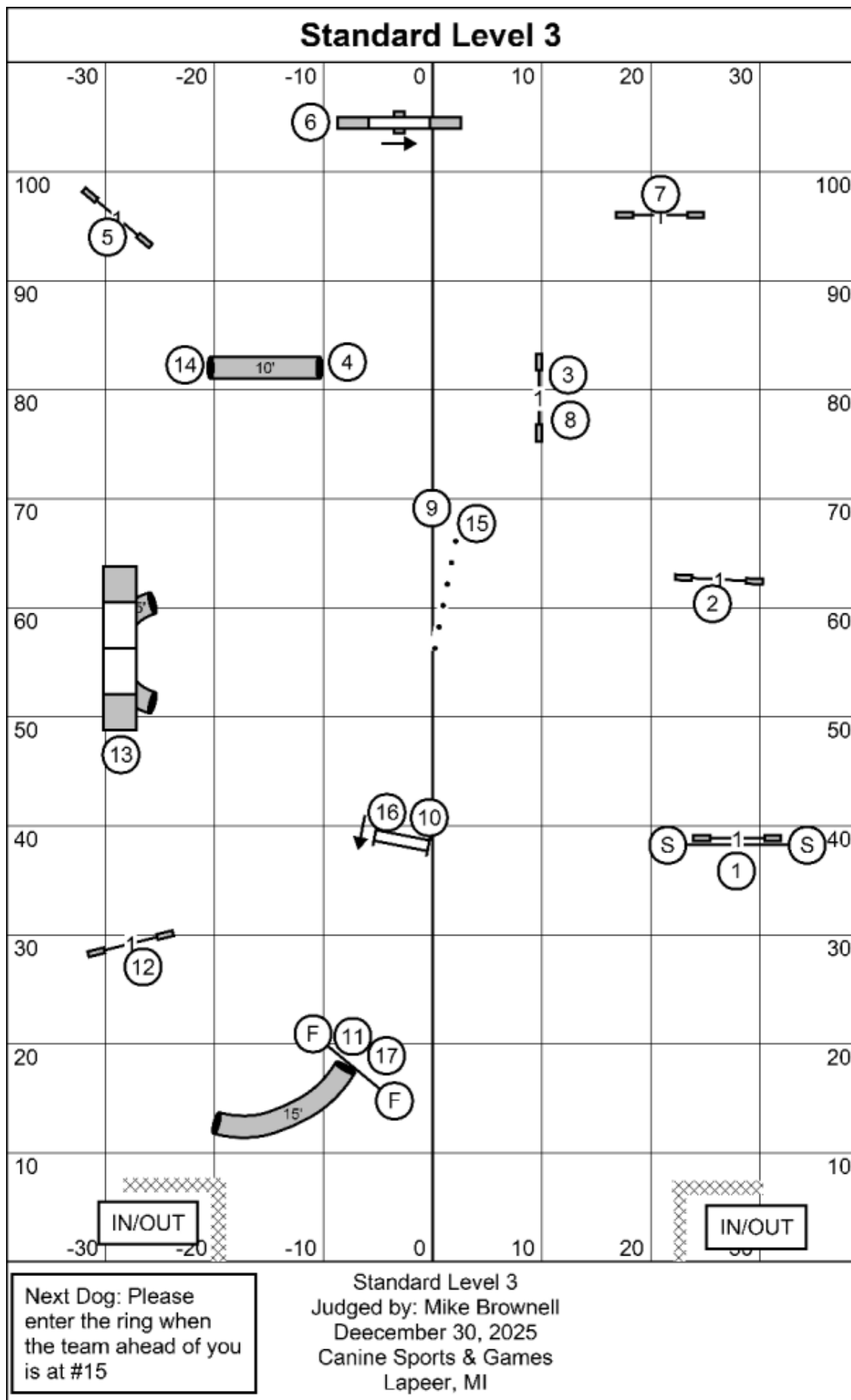
The start and finish lines are bi-directional.

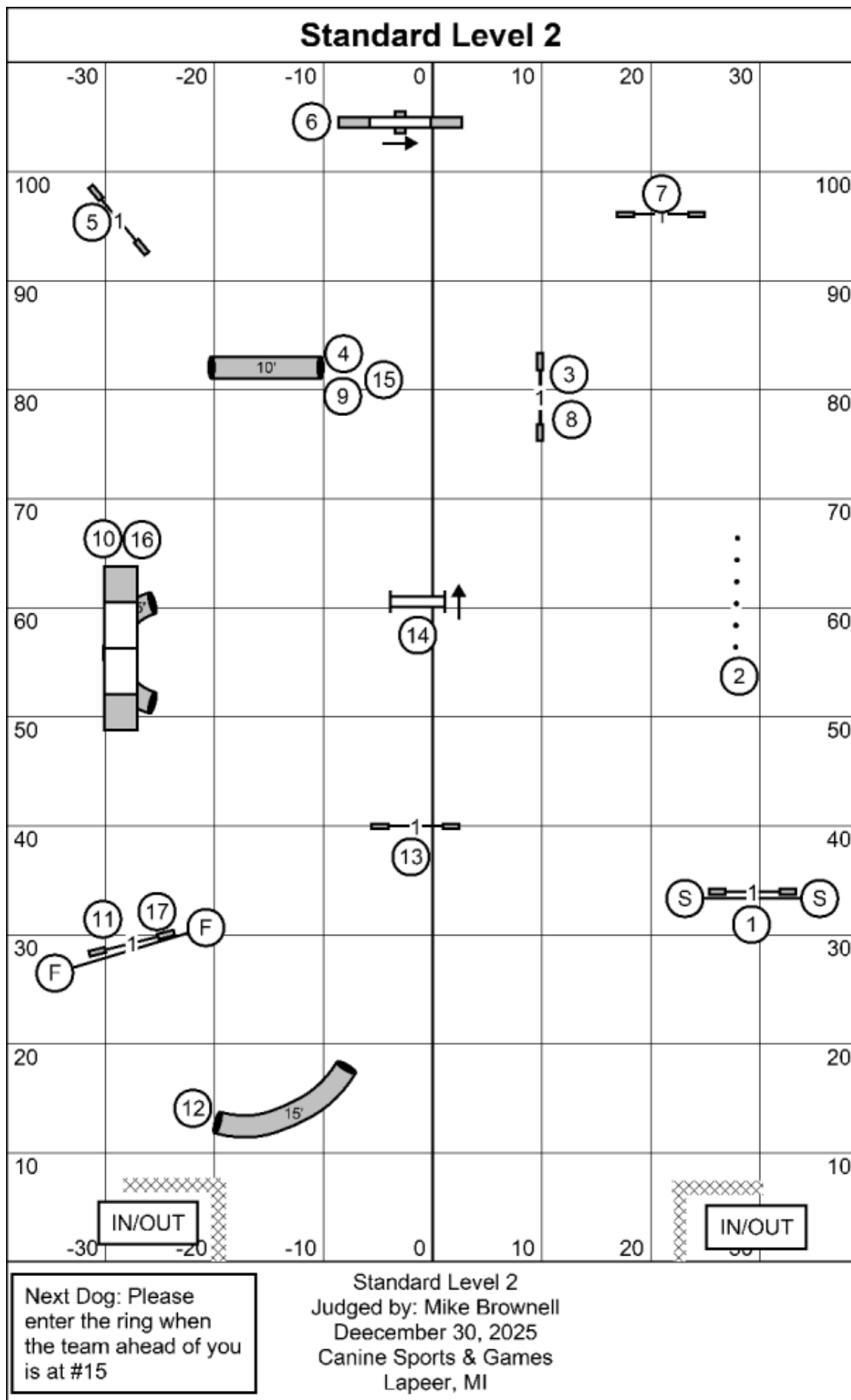
Standard Levels 5/C



Next Dog: Please
enter the ring when
the team ahead of you
is at #16

Standard Levels 5/C
Judged by: Mike Brownell
December 30, 2025
Canine Sports & Games
Lapeer, MI

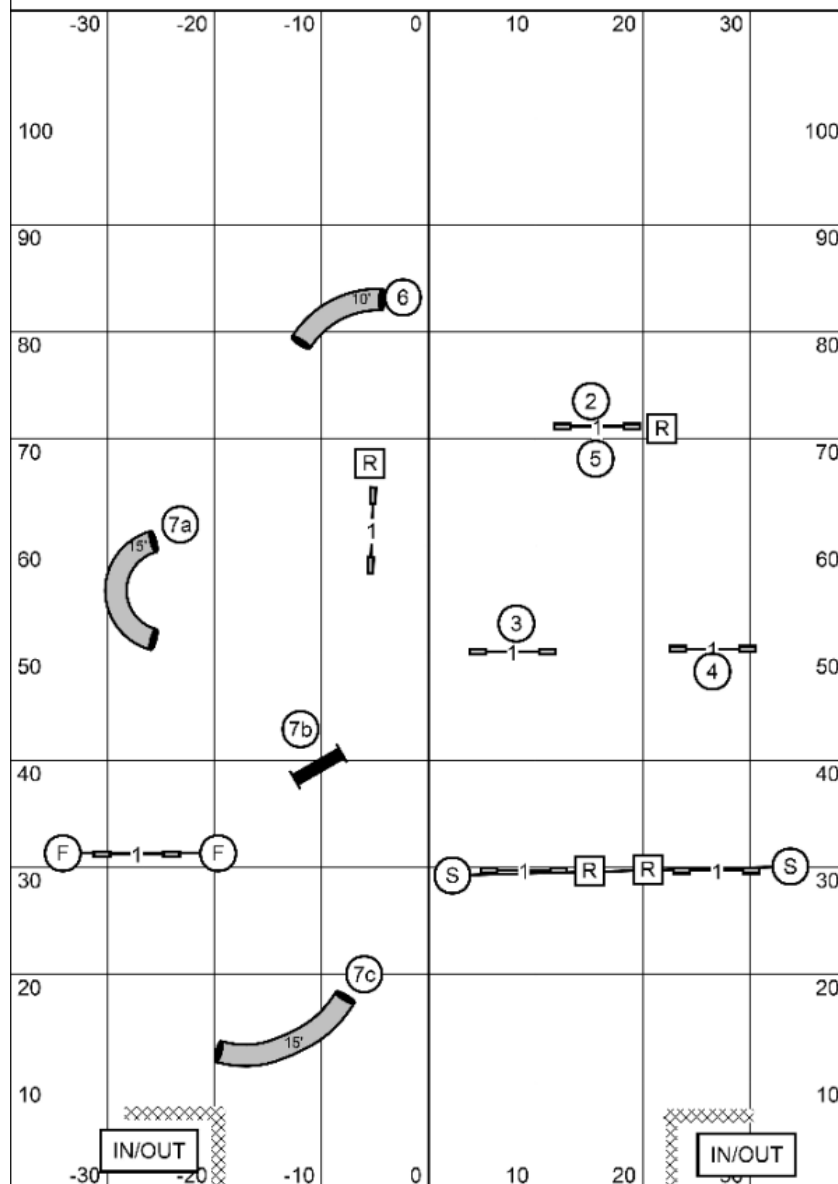




[illegible]

Standard Level 1
Judged by: Mike Brownell
December 30, 2025
Canine Sports & Games
Lapeer, MI

Snooker Levels 3/5/C



BRIEFING:

*In the opening: All obstacles are bi-/multi- directional. For combo #7, order and direction do not matter: just get all parts.

*You may do a color multiple times, but reds may only be used once

* In the closing: #2 is NOT bi-directional. Everything else must be done as labeled.

* if you hear me say thank you or a whistle-please proceed to the finish jump.

Points:

Level 1 26 points

Level 2 28 points

Level 3 30 points

Level 5, C 32 points

Enthusiast/Specialist – 2 points fewer at each level

Times:

Small Dogs: 55 Seconds

Large Dogs: 50 Seconds

16" Vets jumping 12" get big dog time.

* The start and finish jumps are bi-directional

Next Dog: Please enter the ring when the team ahead of you is at #7 in the closing

Snooker Levels 3/5/C
Judged by: Mike Brownell
December 30, 2025
Canine Sports & Games
Lapeer, MI

Snooker Levels 1/2

The diagram shows a rectangular arena divided by a central vertical line. The left side has a width from -30 to 0 and the right side from 0 to 30. The depth ranges from 10 to 100. Obstacles include:

- A curved wall at (-20, 50) labeled #5.
- A curved wall at (-10, 80) labeled #4.
- A jump at (-10, 40) labeled #6.
- A jump at (10, 50) labeled #2.
- A jump at (10, 70) labeled #3.
- A jump at (20, 30) labeled #7.

Start and finish jumps are located at (-30, 30) and (30, 30), both labeled 'IN/OUT'. Various other obstacles like poles and gates are marked with letters R, S, F, and numbers 1, 2, 3, 4, 5, 6, 7.

BRIEFING:

- *In the opening: All obstacles are bi-/multi- directional.
- *You may do a color multiple times, but reds may only be used once
- * In the closing: #2 IS bi-directional. Everything else must be done as labeled.
- * if you hear me say thank you or a whistle-please proceed to the finish jump.

Points:

Level 1	26 points
Level 2	28 points
Level 3	30 points
Level 5, C	32 points

Enthusiast/Specialist – 2 points fewer at each level

Times:

- Small Dogs: 50 Seconds
- Large Dogs: 45 Seconds
- 16" Vets jumping 12" get big dog time.

* The start and finish jumps are bi-directional

Next Dog: Please enter the ring when the team ahead of you is at #5 in the closing

Snooker Levels 1/2
Judged by: Mike Brownell
December 30, 2025
Canine Sports & Games
Lapeer, MI

Next Dog: Please enter the ring when the team ahead of you is at #5 in the closing

Snooker Levels 1/2
Judged by: Mike Brownell
December 30, 2025
Canine Sports & Games
Lapeer, MI

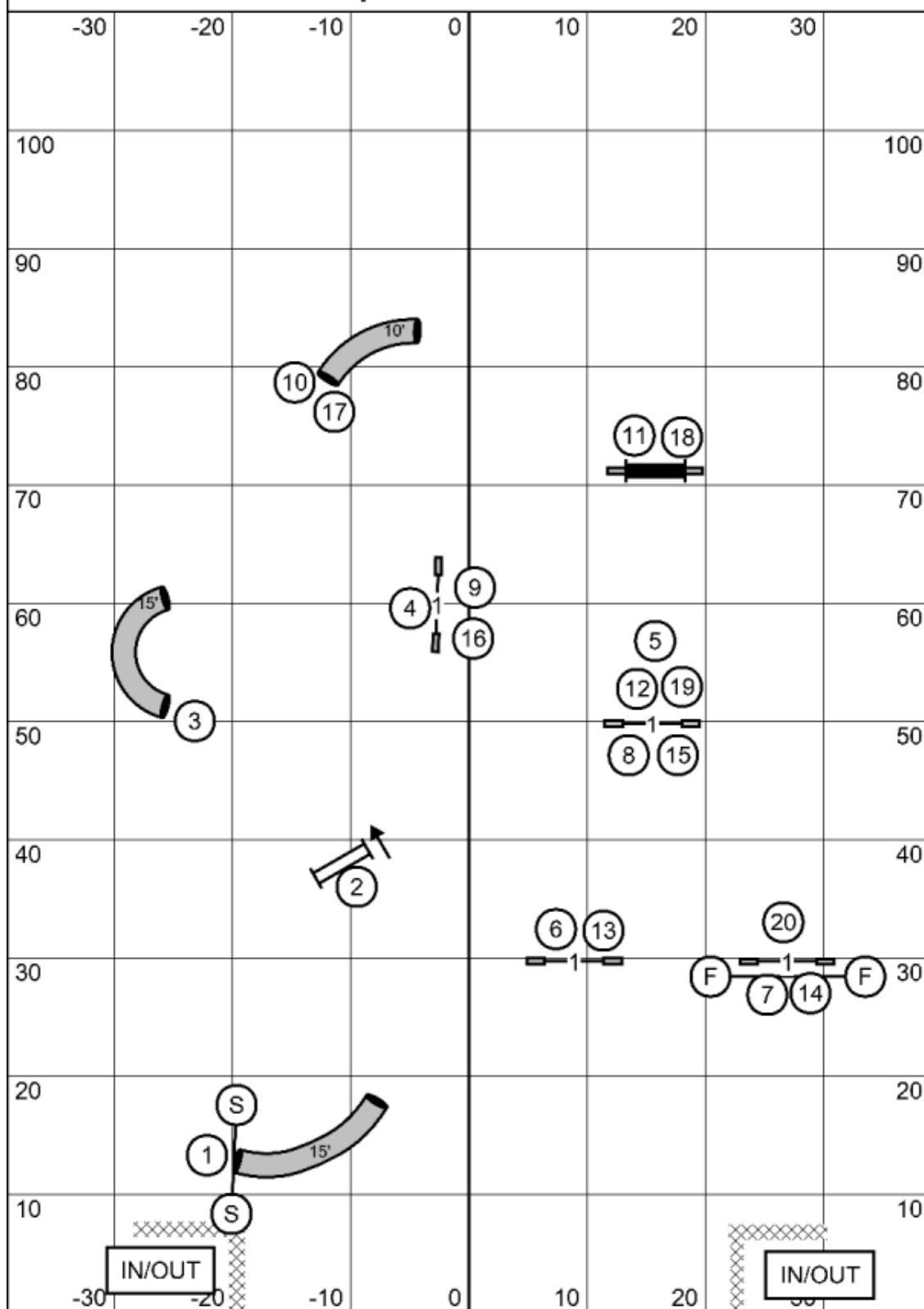
- *In the opening: All obstacles are bi-/multi- directional.
- *You may do a color multiple times, but reds may only be used once
- * In the closing: #2 IS bi-directional. Everything else must be done as labeled.
- * if you hear me say thank you or a whistle-please proceed to the finish jump.

Level 1	26 points
Level 2	28 points
Level 3	30 points
Level 5, C	32 points
Enthusiast/Specialist – 2 points fewer at each level	

Small Dogs: 50 Seconds
Large Dogs: 45 Seconds
16" Vets jumping 12" get big dog time.

* The start and finish jumps are bi-directional

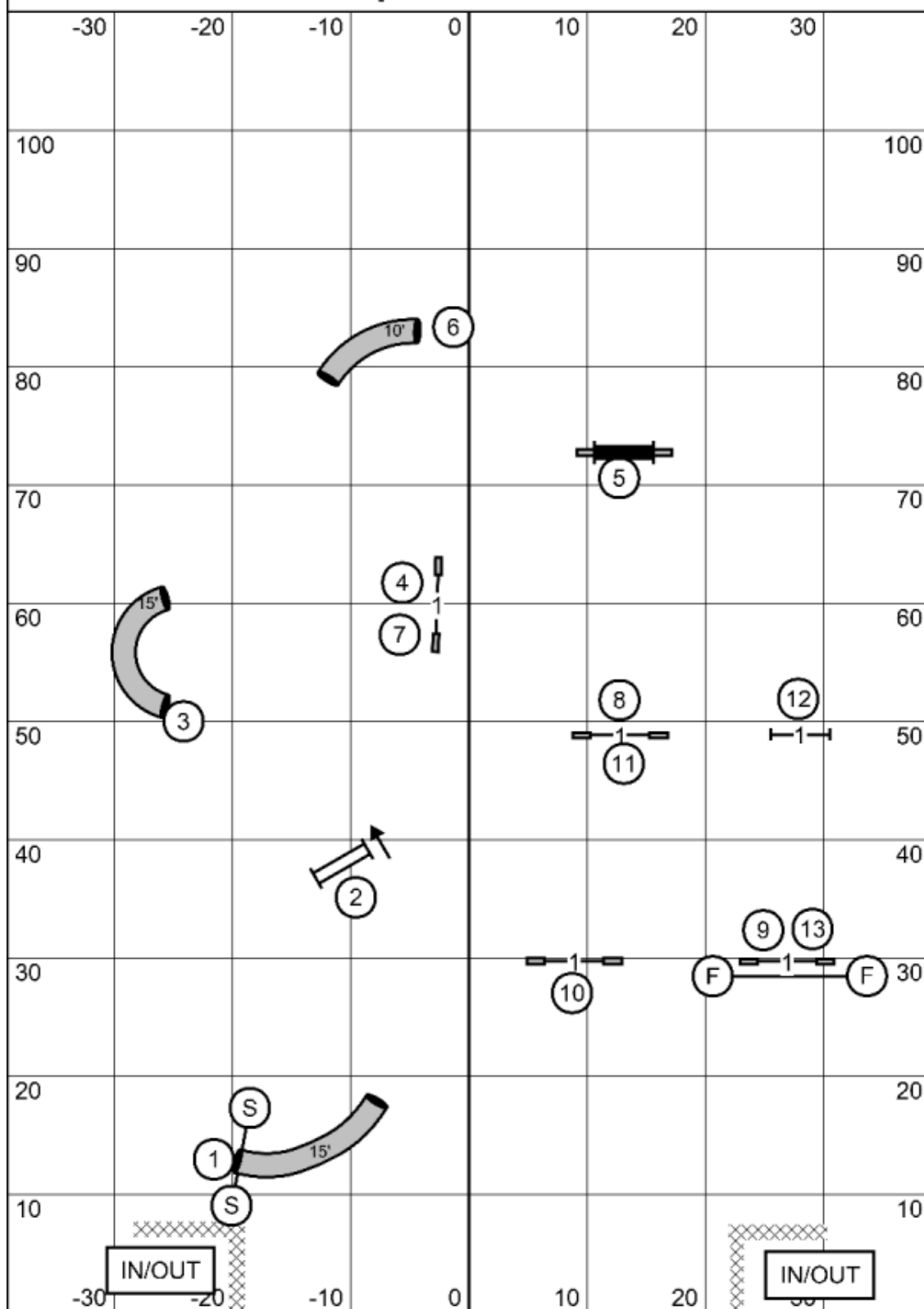
Jumpers Levels 3/5/C



Next Dog: Please enter the ring when the team ahead of you is at #17

Jumpers Levels 3/5/C
 Judged by: Mike Brownell
 December 30, 2025
 Canine Sports & Games
 Lapeer, MI

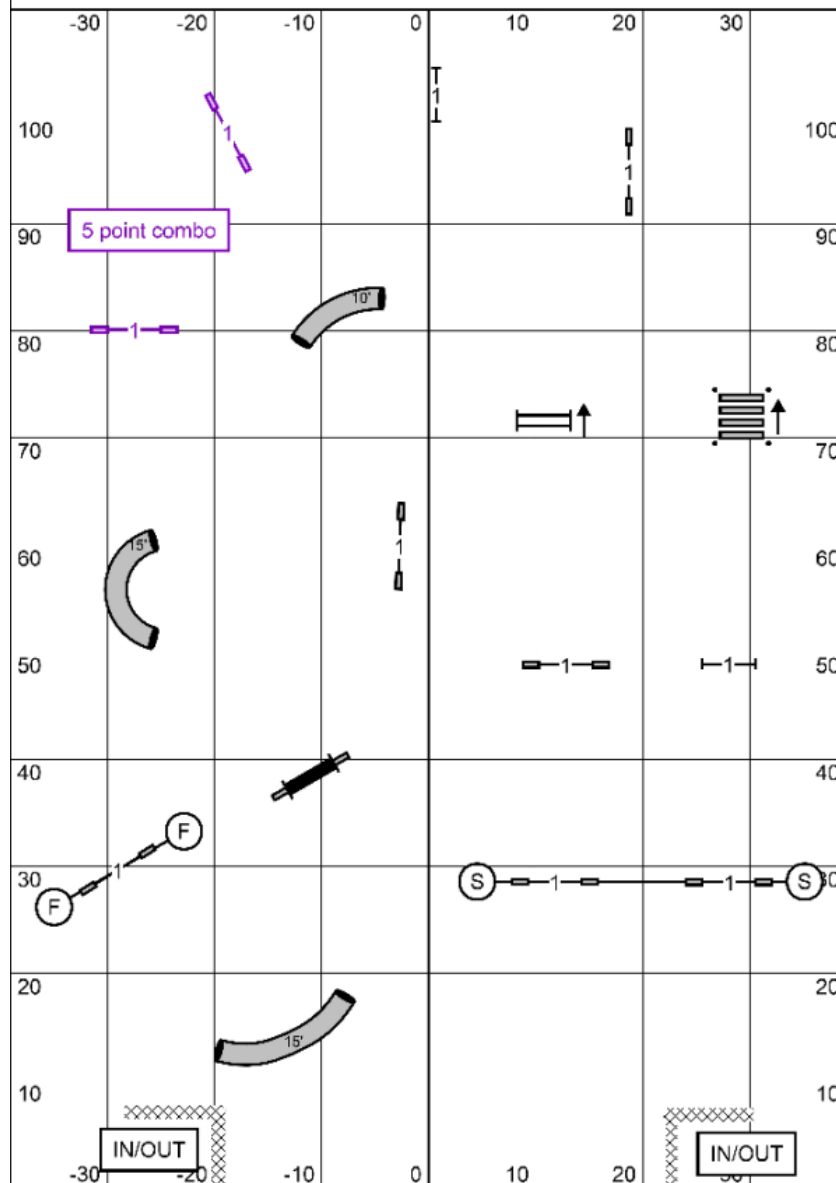
Jumpers Levels 1/2



Next Dog: Please enter the ring when the team ahead of you is at #11

Jumpers Levels 1/2
 Judged by: Mike Brownell
 December 30, 2025
 Canine Sports & Games
 Lapeer, MI

FullHouse Levels 1/2/3/5/C



BRIEFING: The Finish Jump is live at all times after you receive the "Go." It does NOT have a point value.

All obstacles may be taken twice for points and back to back obstacles are allowed if done safely.

To qualify, you must obtain the required obstacles, which are three (3) 1 point obstacles, two (2) 3 point obstacles and one (1) 5 point obstacle and the additional points to complete your level.

Once you complete your point accumulation, you may go to the finish jump at any time. Once the horn blows, you have 5 seconds for your dog to perform the finish jump to stop the clock, or lose one point per full second over time

1 Point: Single bar jumps

3 Point: Tunnels, Panel

5 Point Jokers: Double, Broad, Combo (in flow)

Times: Large Dogs: 30 seconds; Small Dogs: 35 seconds; 16" vets jumping 12" get big Dog time.

Level 1 19 points

Level 2 21 points

Level 3 23 points

Level 5, C 25 points

Specialists and Enthusiasts: Two points fewer.

The start and finish lines are bi-directional

Next Dog: Please enter the ring after the buzzer for the team ahead of you

FullHouse Levels 1/2/3/5/C
Judged by: Mike Brownell
December 30, 2025
Canine Sports & Games
Lapeer, MI