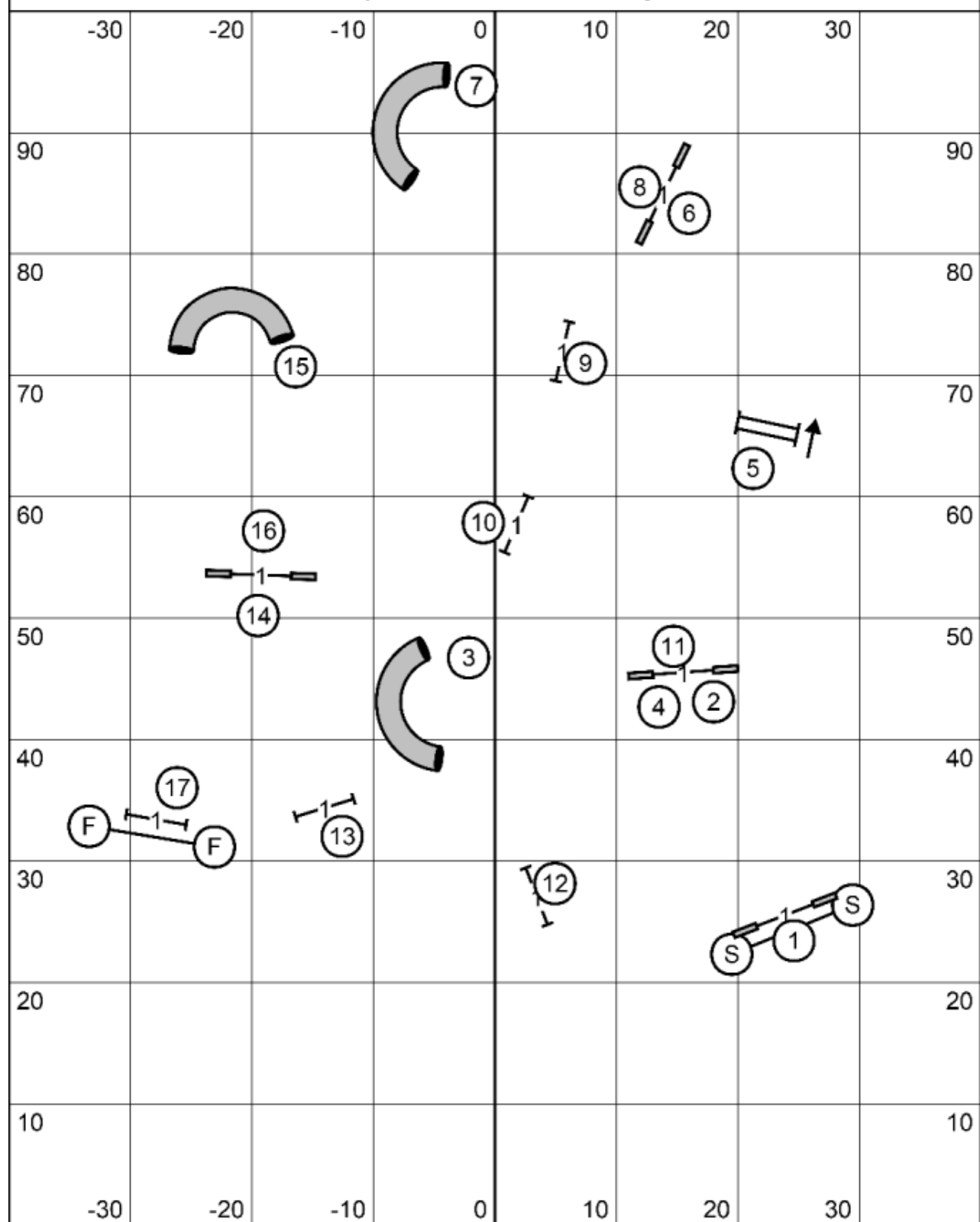
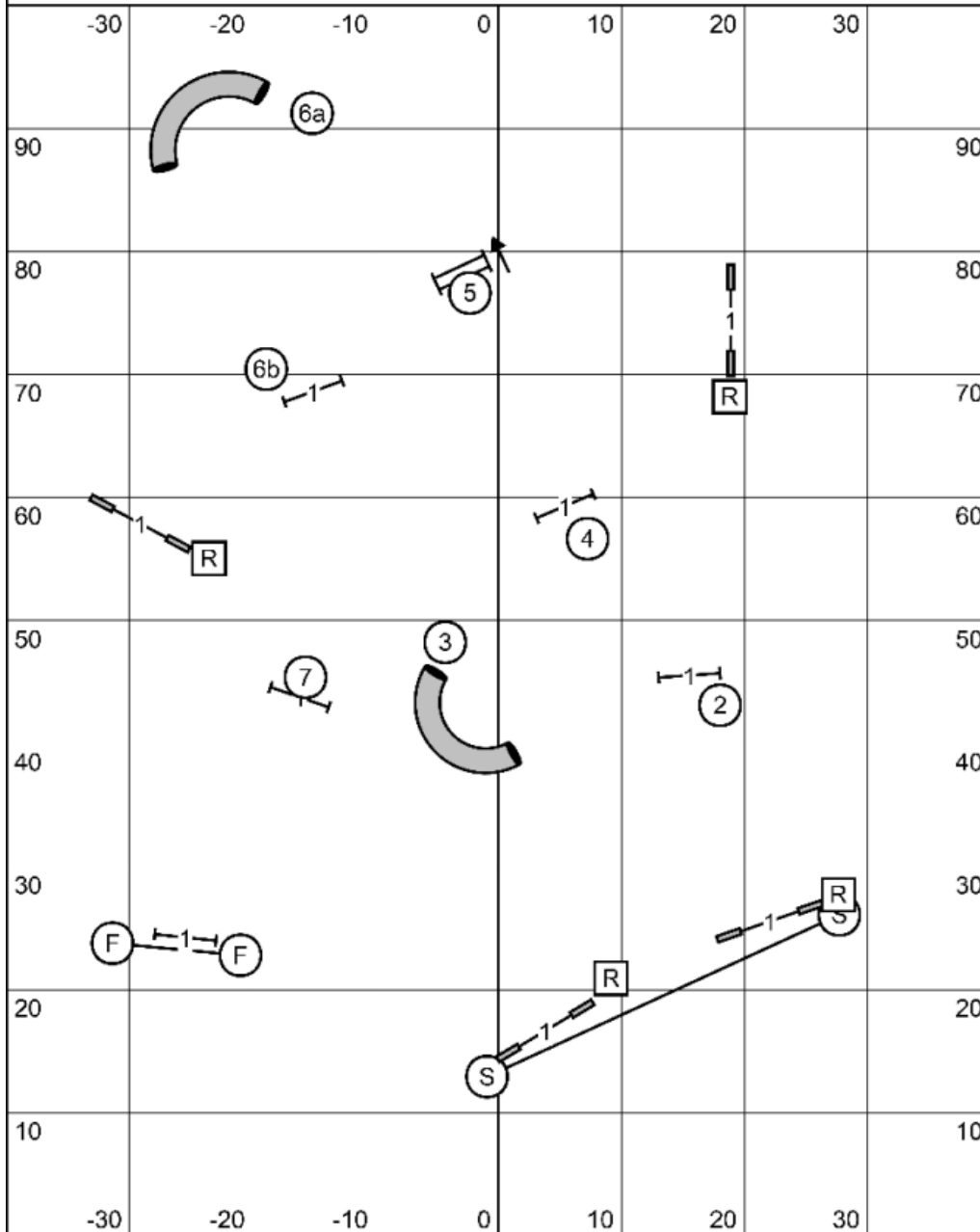


Jumpers Levels 3/5/C - Friday



Jumpers Lvl 3, 5 & C
 Judged by: Karl Johnson
 December 5, 2025
 Minnesota Agility Club
 Ham Lake, MN

Snooker Levels 1/2 - Friday



Snooker

*In the opening: Everything is bi-directional except the double jump. You may do a color multiple times, but a red is only done once

* In the closing: Everything must be taken as labeled. #2 is not bidirectional in the closing

* if you hear me say 'thank you' or hear a whistle-please proceed to the finish jump.

* Finish jump is not 'Live' until the end of the opening.

Points needed to qualify:

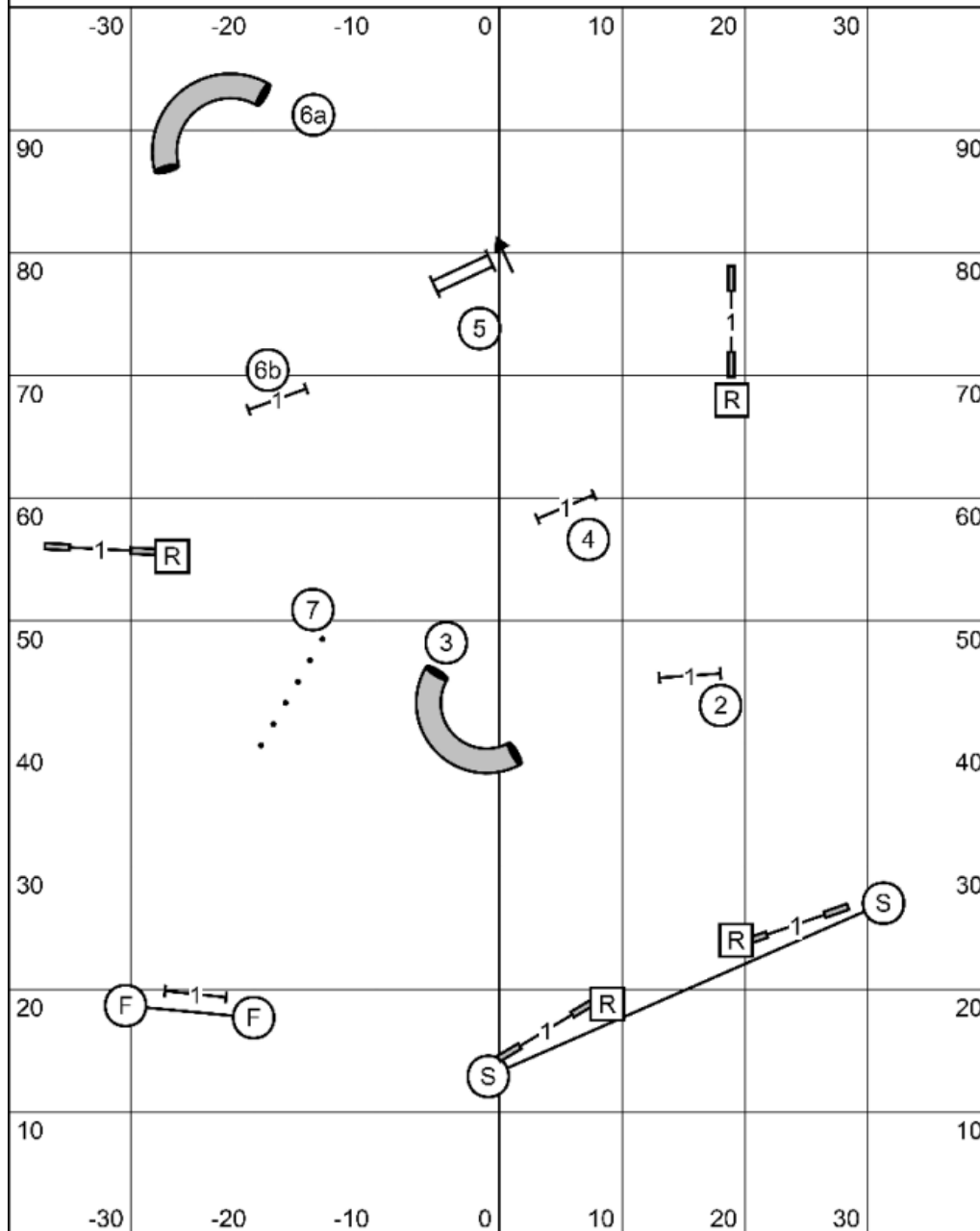
	R/V	E/S
Lvl 1	26	24
Lvls 5,C	28	26

Times:

Big Dogs:	45 sec
Small Dogs:	50 sec

Snooker Lvl 1 & 2
 Judged by: Karl Johnson
 December 5, 2025
 Minnesota Agility Club
 Ham Lake, MN

Snooker Levels 3/5/C - Friday



Snooker

*In the opening: Everything is bi-directional except the double jump. You may do a color multiple times, but a red is only done once

* In the closing: Everything must be taken as labeled. #2 is not bidirectional in the closing

* if you hear me say 'thank you' or hear a whistle-please proceed to the finish jump.

* Finish jump is not 'Live' until the end of the opening.

Points needed to qualify:

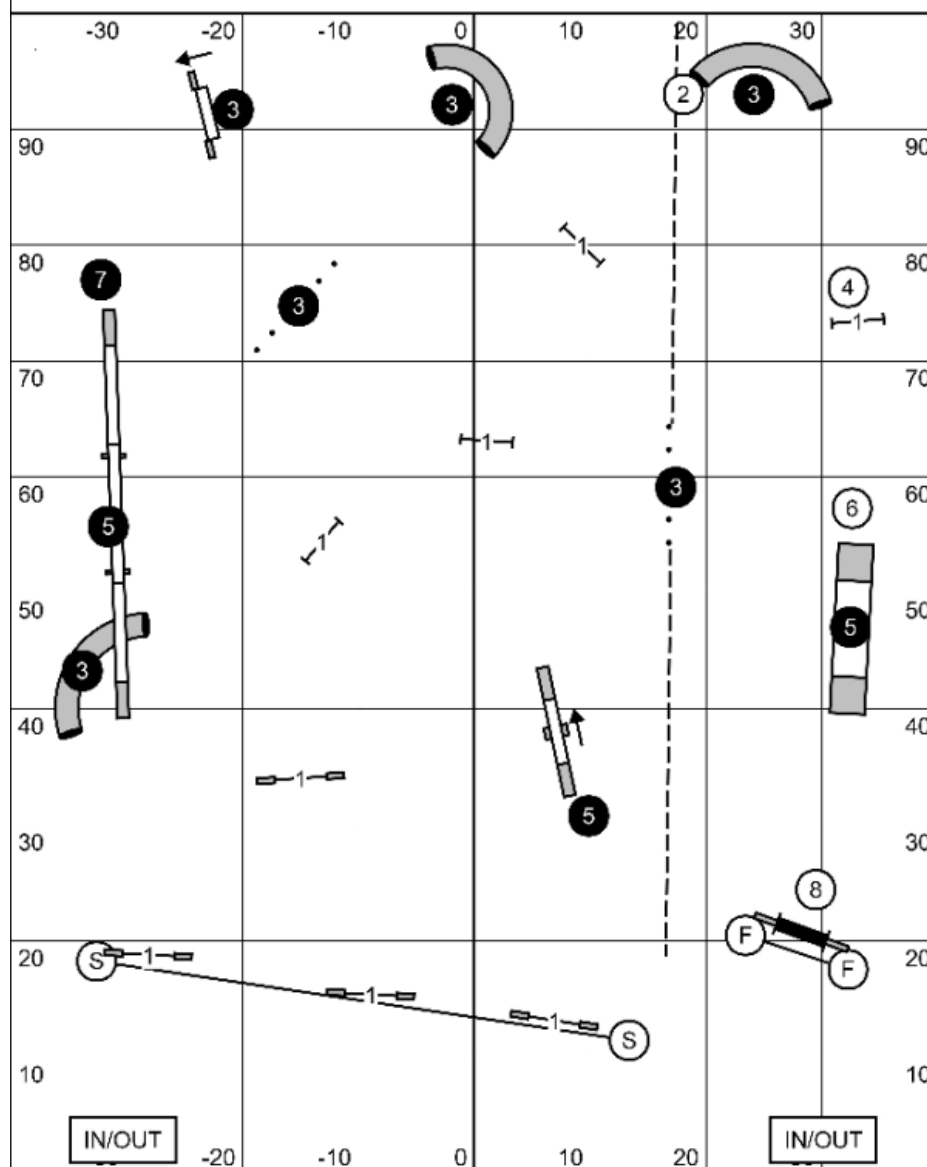
	R/V	E/S
Lvl 3	30	28
Lvls 5,C	32	30

Times:

Big Dogs: 45 sec
Small Dogs: 50 sec

Snooker Lvls 3, 5 & C
Judged by: Karl Johnson
December 5, 2025
Minnesota Agility Club
Ham Lake, MN

Jackpot Levels 5/C - Friday



Traditional Jackpot

In the opening, obstacles can be performed twice for points after the buzzer sounds, only the distance challenge (gamble) is active. In the opening, all obstacles are bi-directional except the double.

After the buzzer, obstacles can be performed on the way to the gamble but do not earn points.

Gamble obstacles can be performed in the opening but no two of them can be performed in order, forward or backward.

- 1-point: jumps and panel
- 3-point: tunnels, weaves, double
- 5-point: Teeter, A-frame, dogwalk from the B end
- 7-point: Dogwalk from the A end 1 time

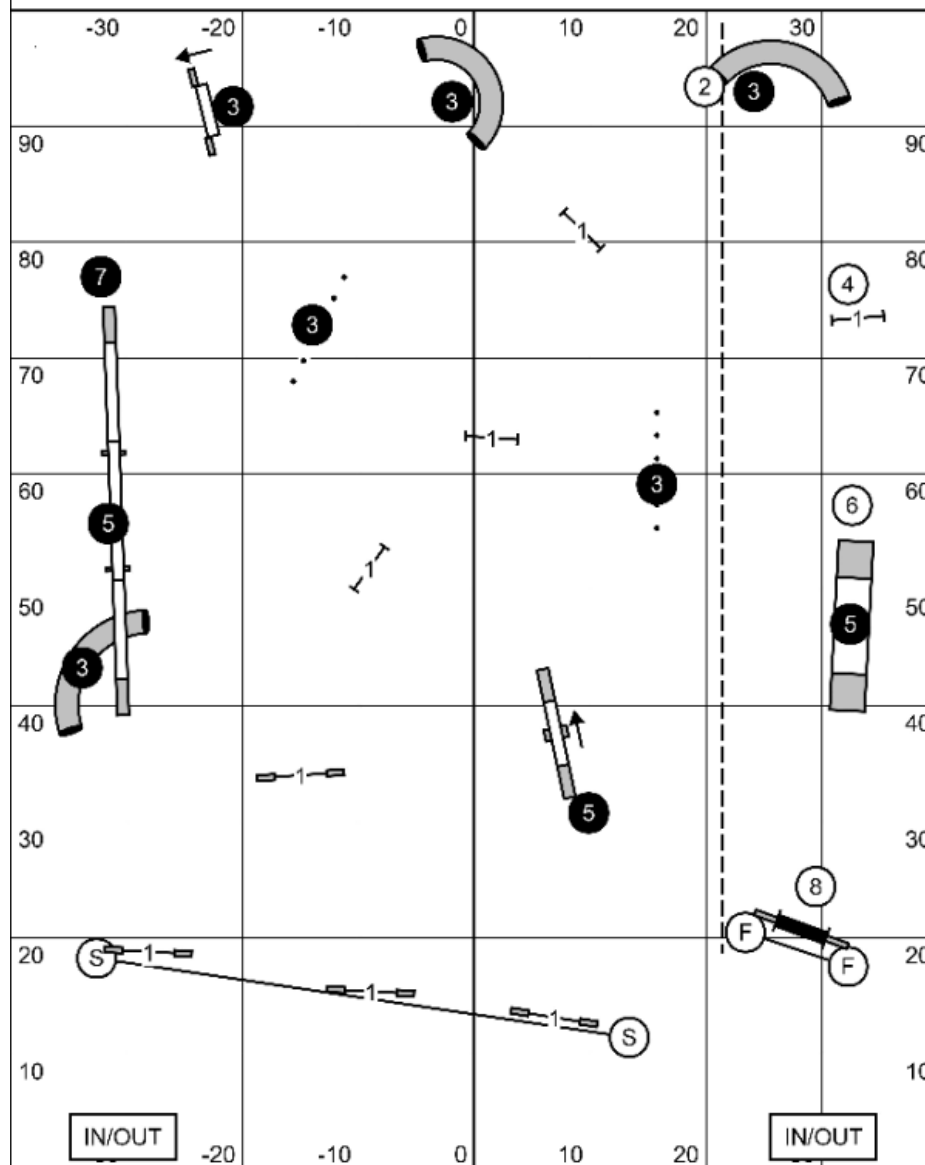
Times

	Opening time	Gamble time
Small dogs:	35	22
Big dogs:	30	20

Points needed to qualify:	Reg/Vet	Enthst/Spclst
Levels 5 & C	44	42

Jackpot lvls 5 & C
 Judged by: Karl Johnson
 December 5, 2025
 Minnesota Agility Club
 Ham Lake, MN

Jackpot Level 3 - Friday



Traditional Jackpot

In the opening, obstacles can be performed twice for points after the buzzer sounds, only the distance challenge (gamble) is active. In the opening, all obstacles are bi-directional except the double.

After the buzzer, obstacles can be performed on the way to the gamble but do not earn points.

Gamble obstacles can be performed in the opening but no two of them can be performed in order, forward or backward.

- 1-point: jumps and panel
- 3-point: tunnels, weaves, double
- 5-point: Teeter, A-frame, dogwalk from the B end
- 7-point: Dogwalk from the A end 1 time

Times

	Opening time	Gamble time
Small dogs:	35	22
Big dogs:	30	20

Points needed to qualify:		
	Reg/Vet	Enthst/Spclst
Level 3	40	38

Jackpot level 3
 Judged by: Karl Johnson
 December 5, 2025
 Minnesota Agility Club
 Ham Lake, MN

Jackpot Levels 1/2 - Friday

The diagram is a tactical map with a coordinate system. The horizontal axis ranges from -30 to 30, and the vertical axis ranges from 10 to 90. Key elements include:

- Symbols:** Black circles containing numbers (3, 5, 7) and white circles containing numbers (2, 4, 6, 8). Letters 'S' and 'F' are also present.
- Arrows:** Small arrows indicating direction, such as one pointing left from circle 3 at (-20, 85) and another pointing up-right from circle 5 at (10, 40).
- Rectangles:** Small rectangles labeled '1' are placed near several numbered circles.
- Dashed Line:** A long dashed line originates from circle 2 at (20, 85) and extends downwards towards circle 8 at (25, 25).
- Solid Line:** A solid line connects circle S at (-25, 20) to circle S at (15, 15).
- Labels:** Two boxes at the bottom are labeled "IN/OUT".

In the opening, obstacles can be performed twice for points after the buzzer sounds, only the distance challenge (gamble) is active. In the opening, all obstacles are bi-directional except the double.

Gamble obstacles can be performed in the opening but no two of them can be performed in order, forward or backward.

Times

	Opening time	Gamble time
Small dogs:	35	22
Big dogs	30	20

Points needed to qualify:		
	Reg/Vet	Enthst/Spclst
Level 1	32	30
Level 2	36	34

Jackpot levels 1 & 2
Judged by: Karl Johnson
December 5, 2025
Minnesota Agility Club
Ham Lake, MN