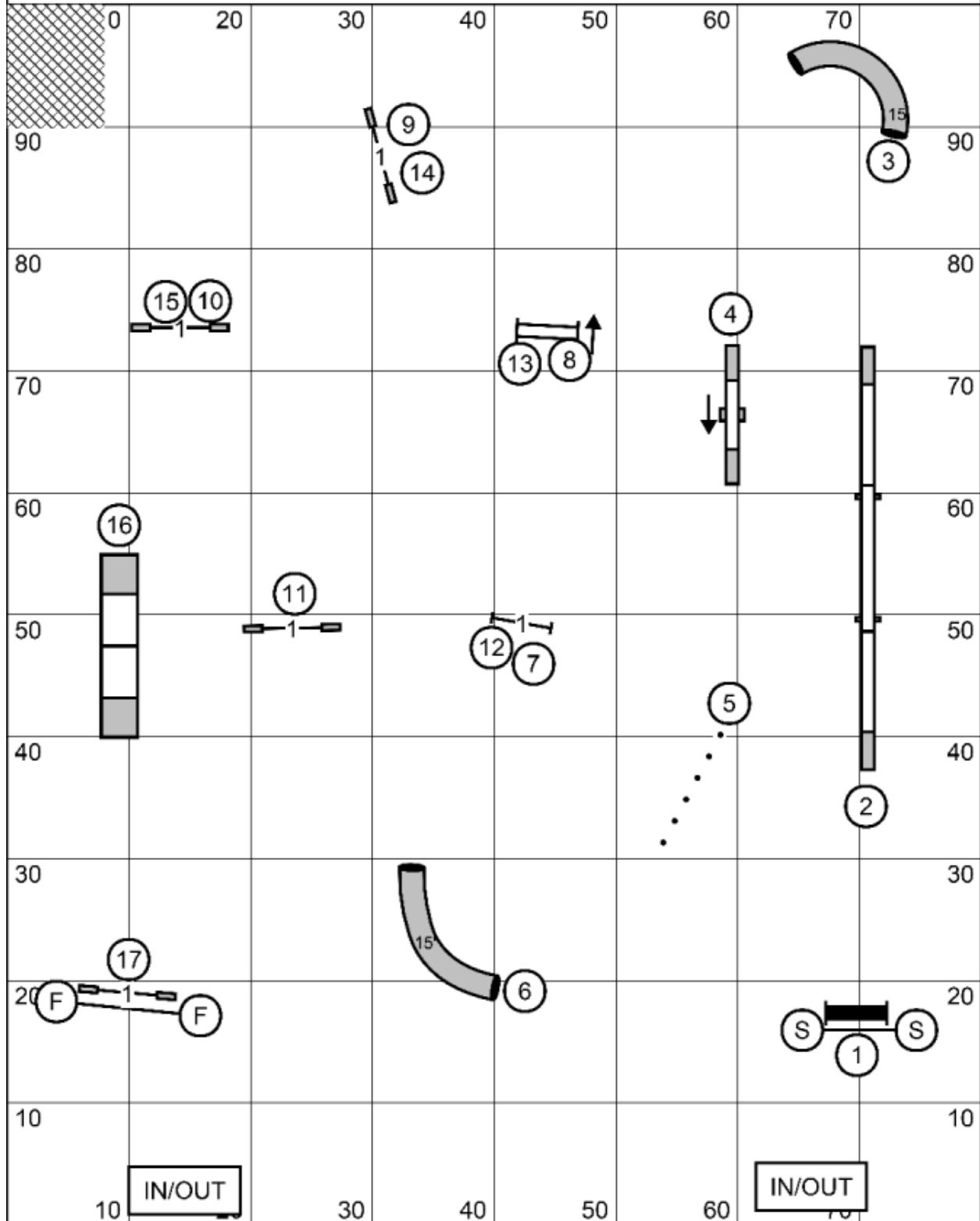
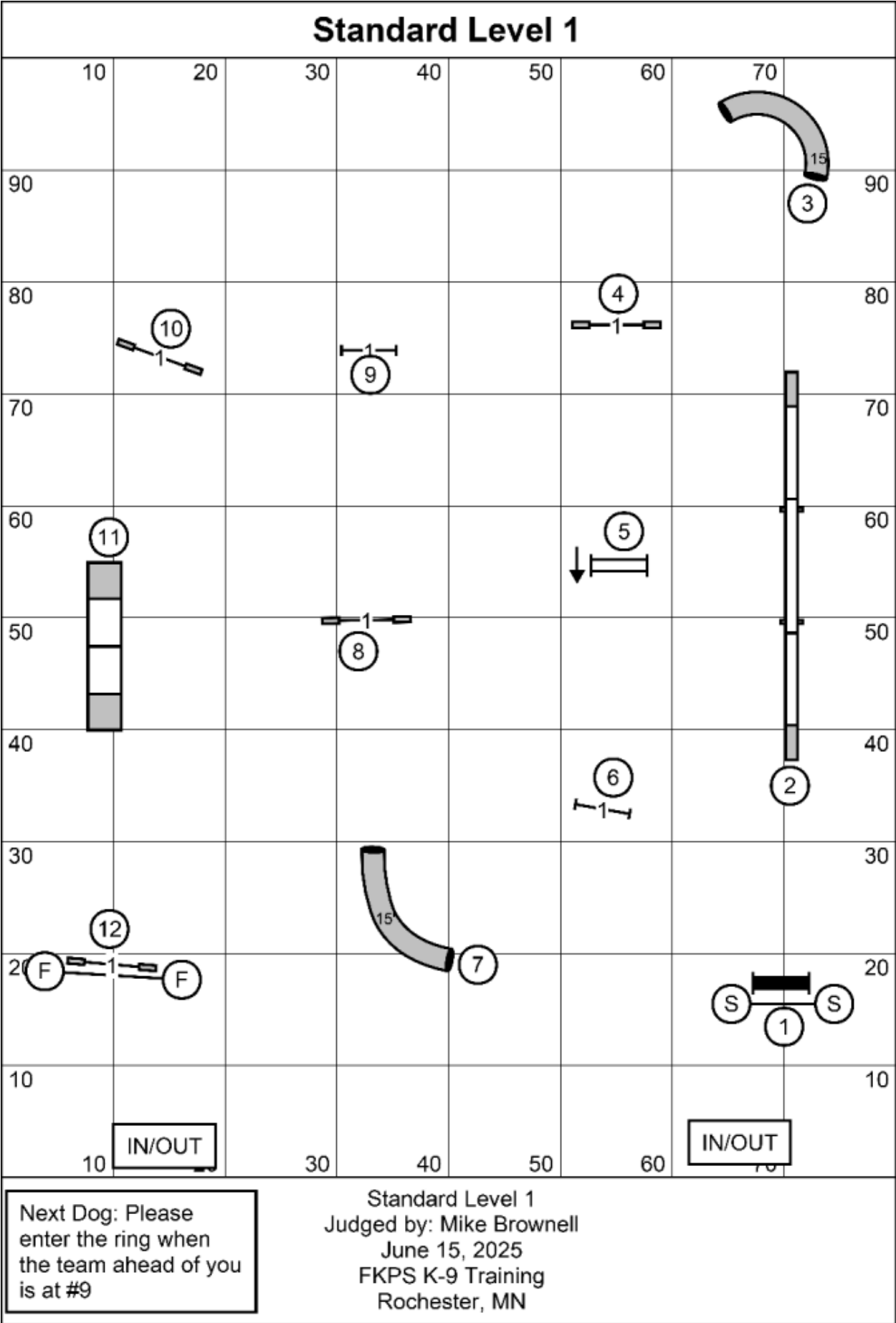


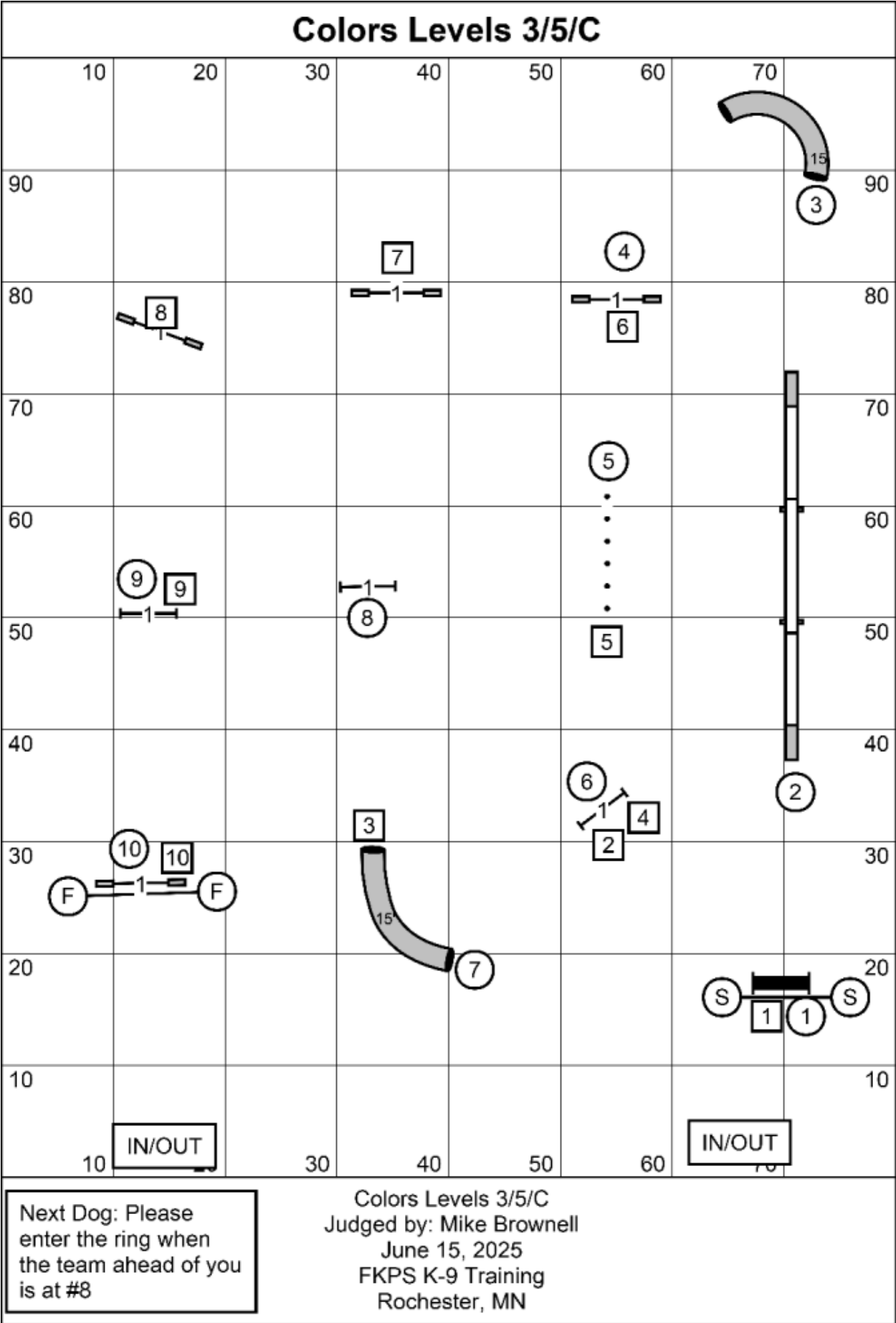
Standard Levels 2/3

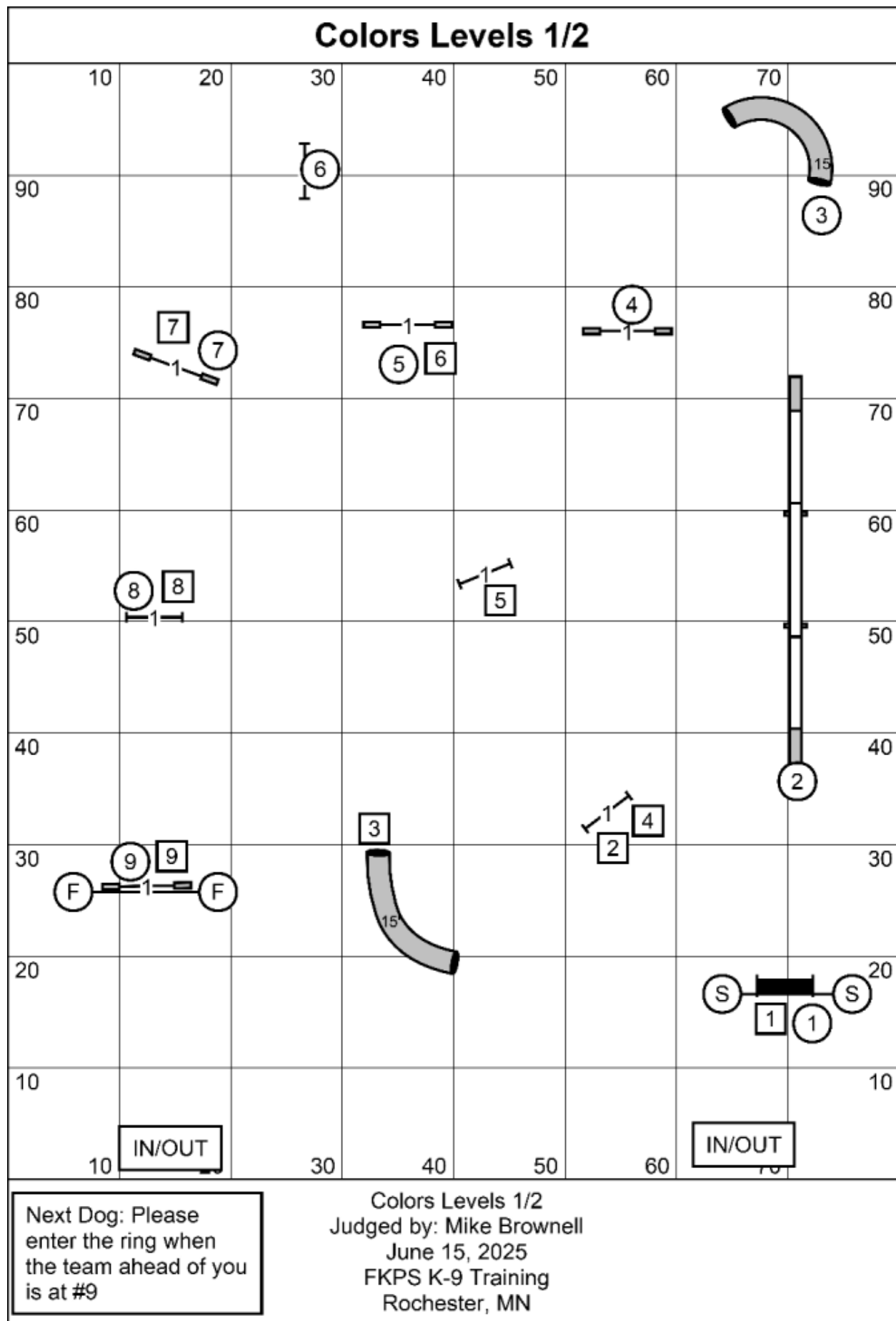


Next Dog: Please
enter the ring when
the team ahead of you
is at #14

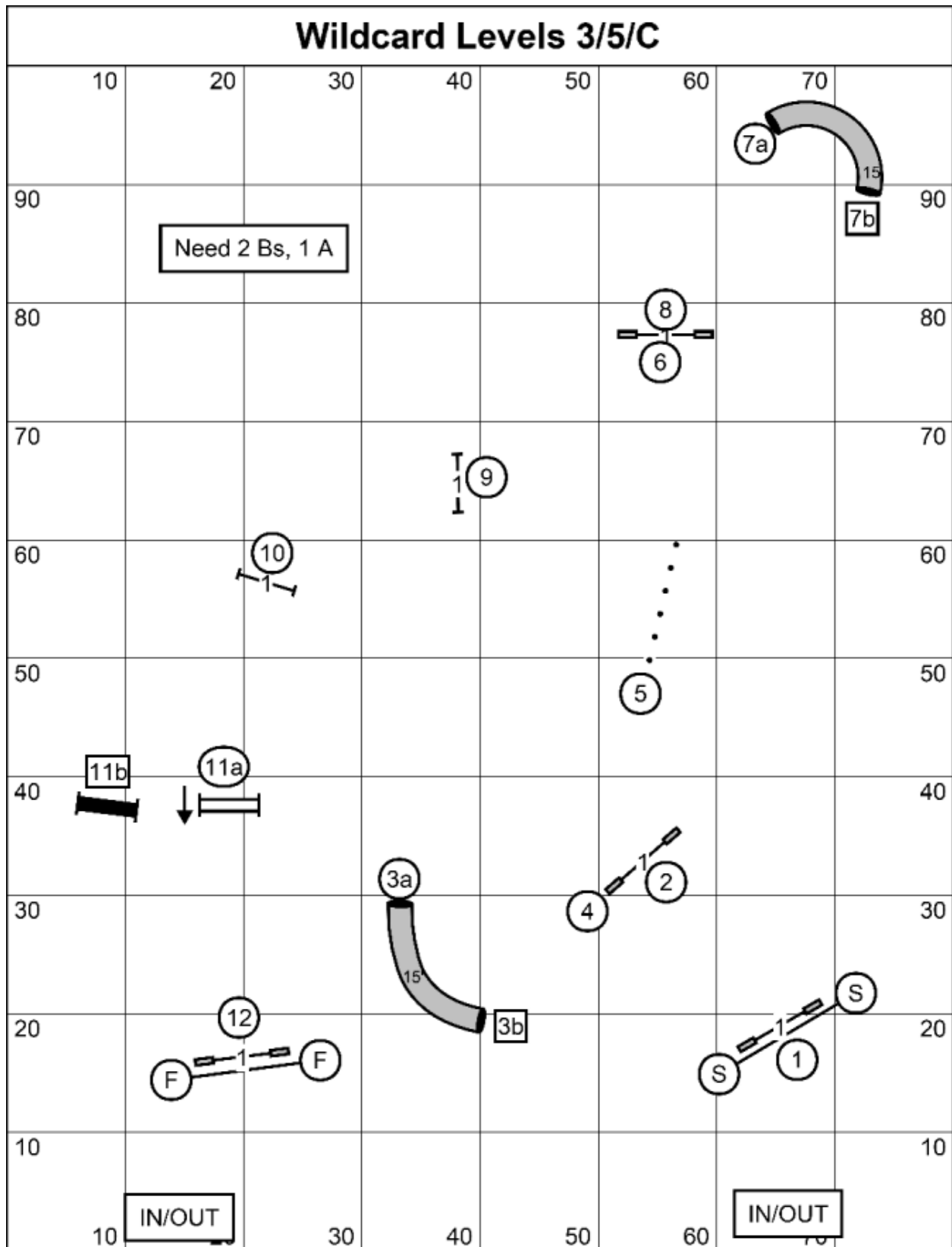
Standard Levels 2/3
Judged by: Mike Brownell
June 15, 2025
FKPS K-9 Training
Rochester, MN







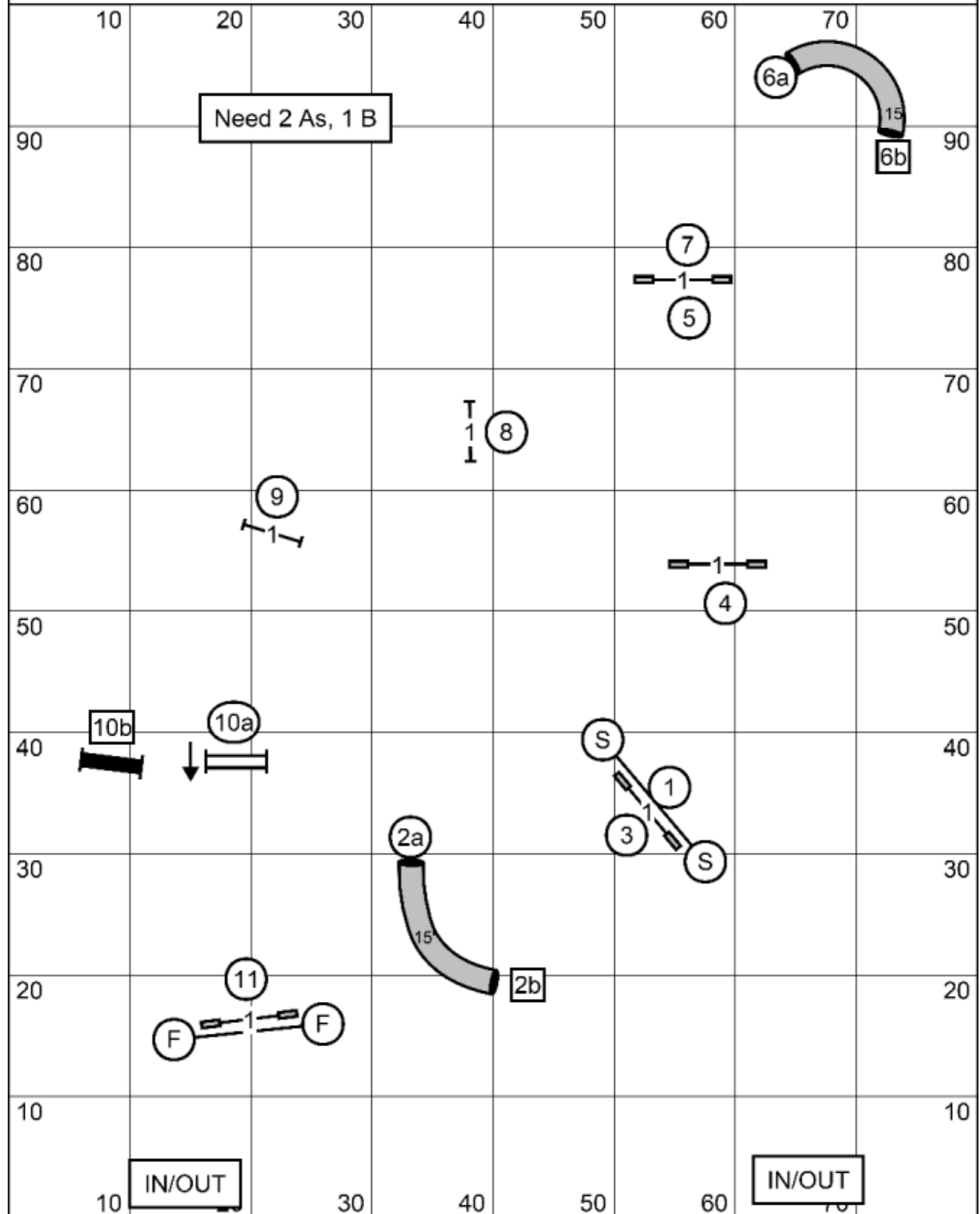
Wildcard Levels 3/5/C



Next Dog: Please enter the ring when the team ahead of you is at #9

Wildcard Levels 3/5/C
Judged by: Mike Brownell
June 15, 2025
FKPS K-9 Training
Rochester, MN

Wildcard Levels 1/2

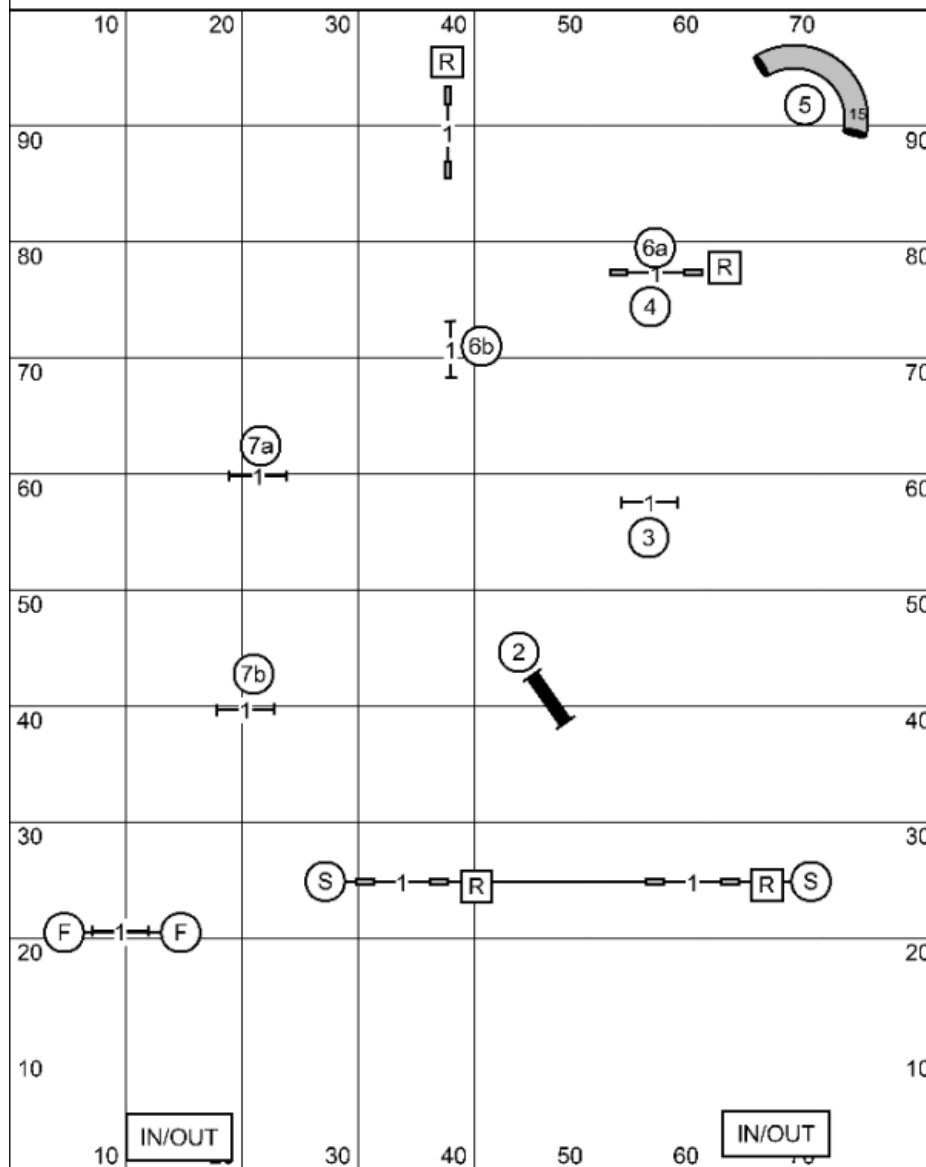


Next Dog: Please
enter the ring when
the team ahead of you
is at #9

Wildcard Levels 1/2
Judged by: Mike Brownell
June 15, 2025
FKPS K-9 Training
Rochester, MN

[illegible]

Snooker Level 1/2



BRIEFING:

*In the opening: All obstacles are bi-/multi- directional.
For combos #6 & #7, order and direction do not matter: just get all parts.

*You may do a color multiple times, but reds may only be used once

* In the closing: #2 and #5 ARE bi-directional.

Everything else must be done as labeled.

* if you hear me say thank you or a whistle-please proceed to the finish jump.

Points:

Level 1 26 points

Level 2 28 points

Level 3 30 points

Level 5, C 32 points

Enthusiast/Specialist – 2 points fewer at each level

Times:

Small Dogs: 50 Seconds

Large Dogs: 45 Seconds

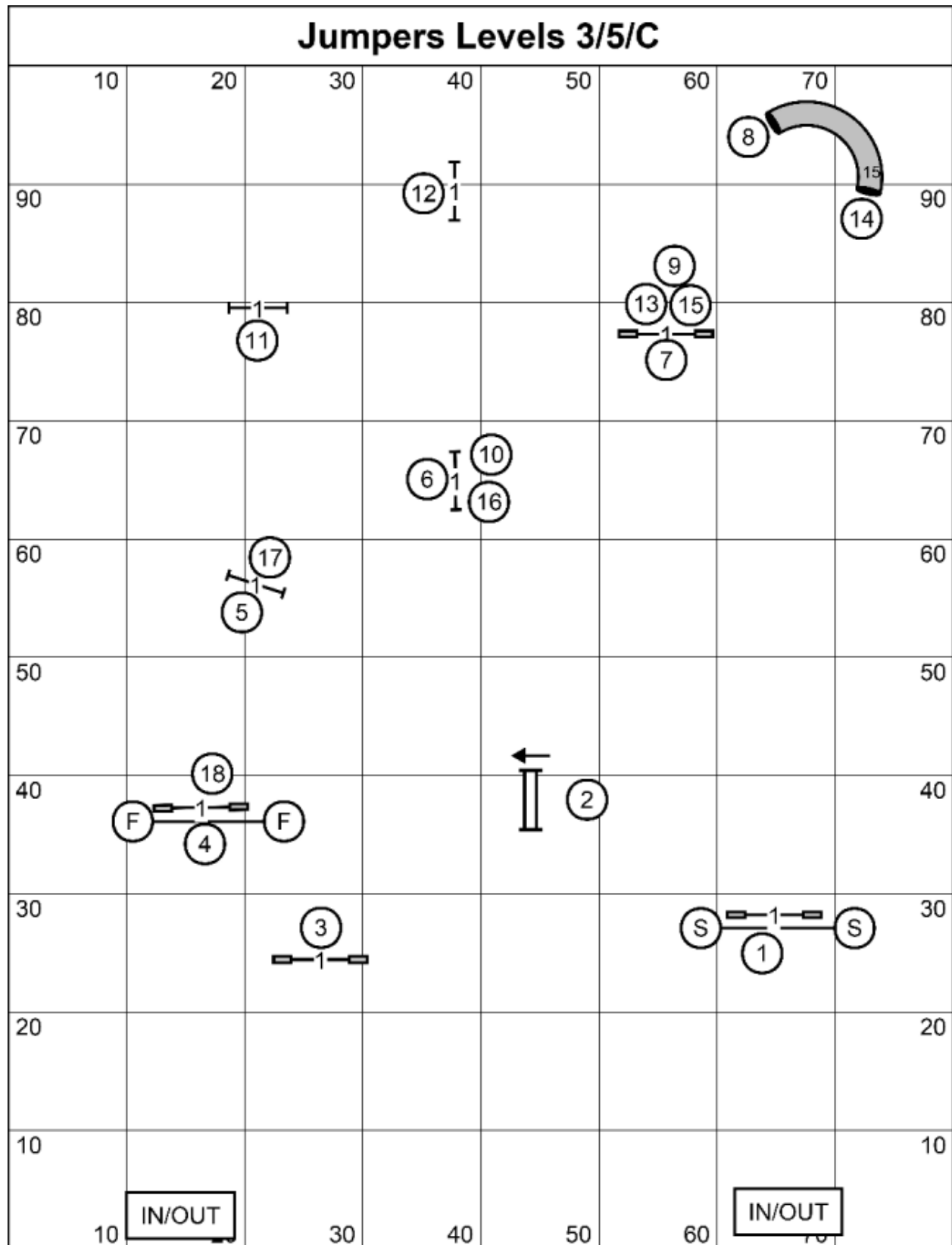
16" Vets jumping 12" get big dog time.

* The start line is bi-directional

Next Dog: Please enter the ring when the team ahead of you is at #6 in the closing

Snooker Levels 1/2
Judged by: Mike Brownell
June 15, 2025
FKPS K-9 Training
Rochester, MN

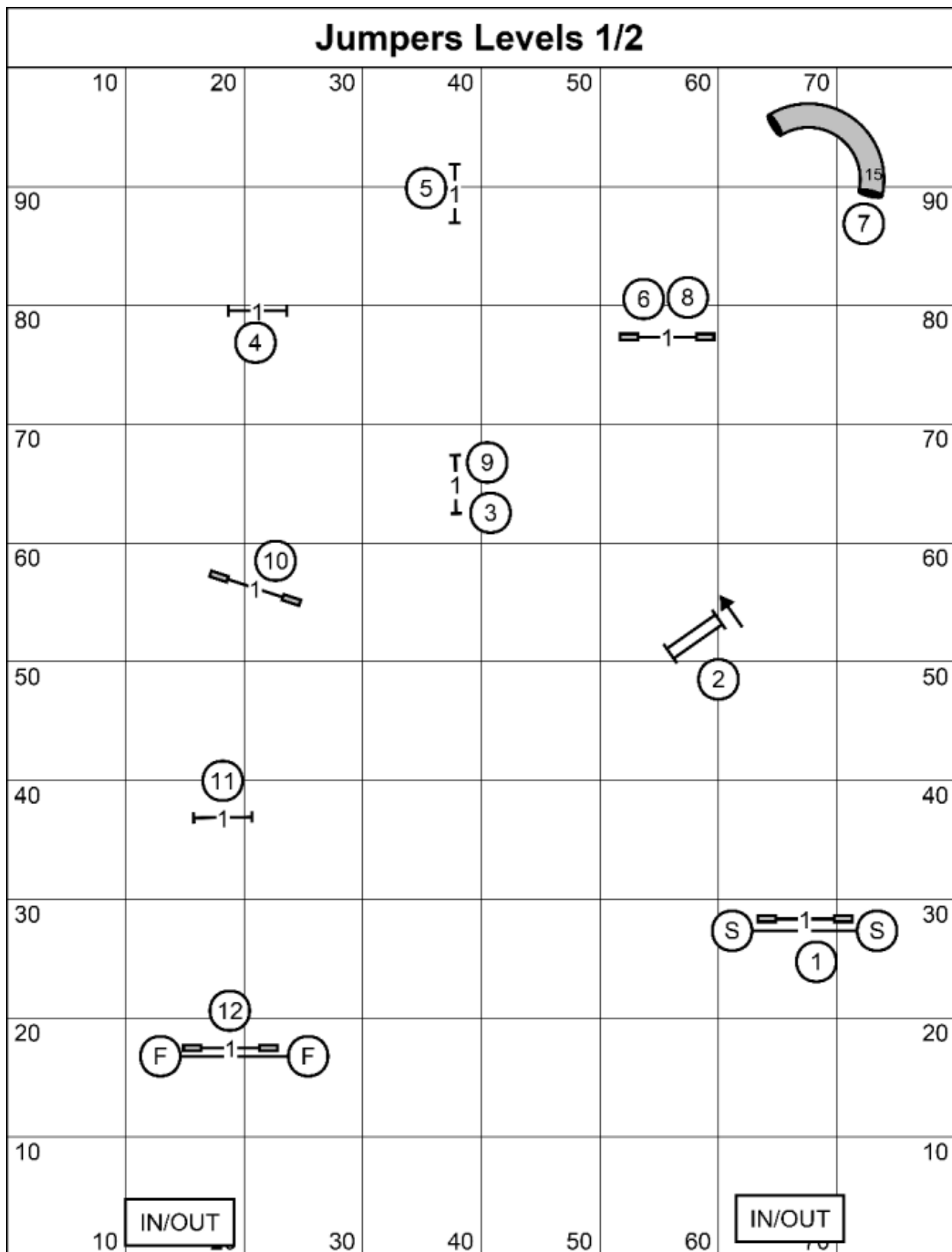
Jumpers Levels 3/5/C



Next Dog: Please enter the ring when the team ahead of you is at #16

Jumpers Levels 3/5/C
Judged by: Mike Brownell
June 15, 2025
FKPS K-9 Training
Rochester, MN

Jumpers Levels 1/2



Next Dog: Please
enter the ring when
the team ahead of you
is at #9

Jumpers Levels 1/2
Judged by: Mike Brownell
June 15, 2025
FKPS K-9 Training
Rochester, MN