

### FullHouse Levels 1/2/3/5/C

10 20 30 40 50 60 70

90 90

80 80

70 70

60 60

50 50

40 40

30 30

20 20

10 10

10 30 40 50 60 70

IN/OUT

IN/OUT

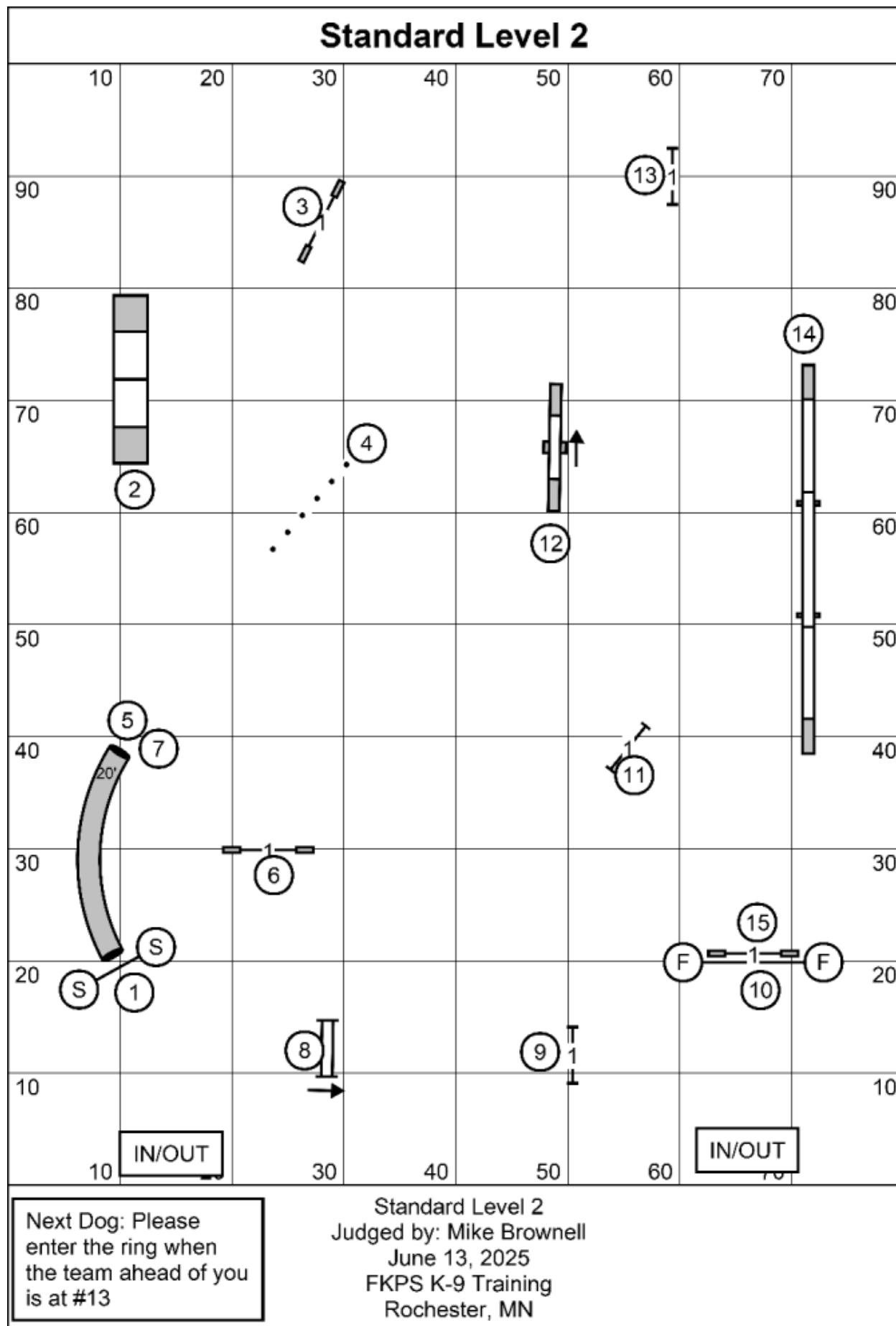
The start line is bi-directional

FullHouse Levels 1/2/3/5/C  
Judged by: Mike Brownell  
June 13, 2025  
FKPS K-9 Training  
Rochester, MN

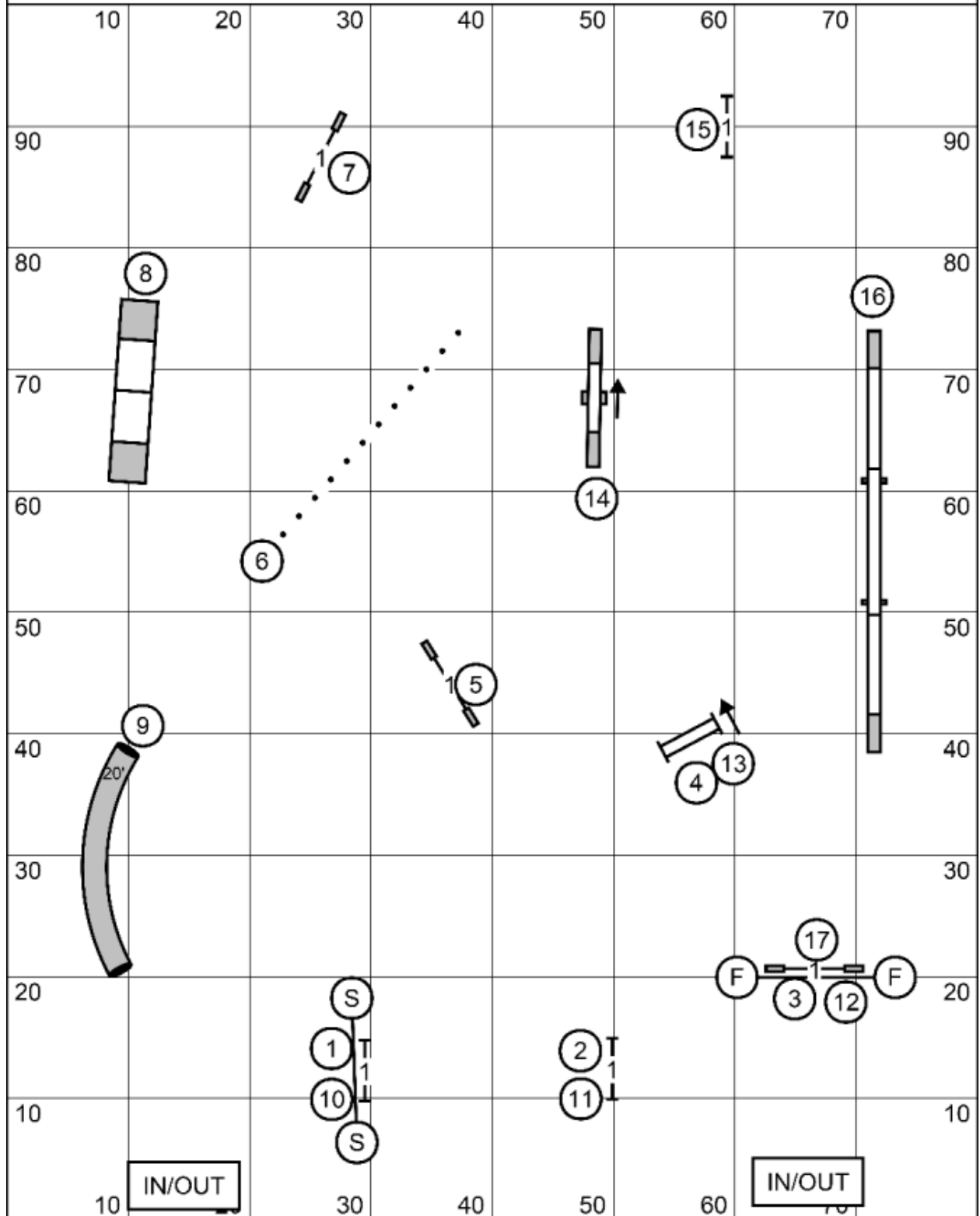
### Standard Level 1

Next Dog: Please enter the ring when the team ahead of you is at #12

Standard Level 1  
Judged by: Mike Brownell  
June 13, 2025  
FKPS K-9 Training  
Rochester, MN



# Standard Level 3



Next Dog: Please enter the ring when the team ahead of you is at #15

Standard Level 3  
 Judged by: Mike Brownell  
 June 13, 2025  
 FKPS K-9 Training  
 Rochester, MN

### Standard Levels 5/C

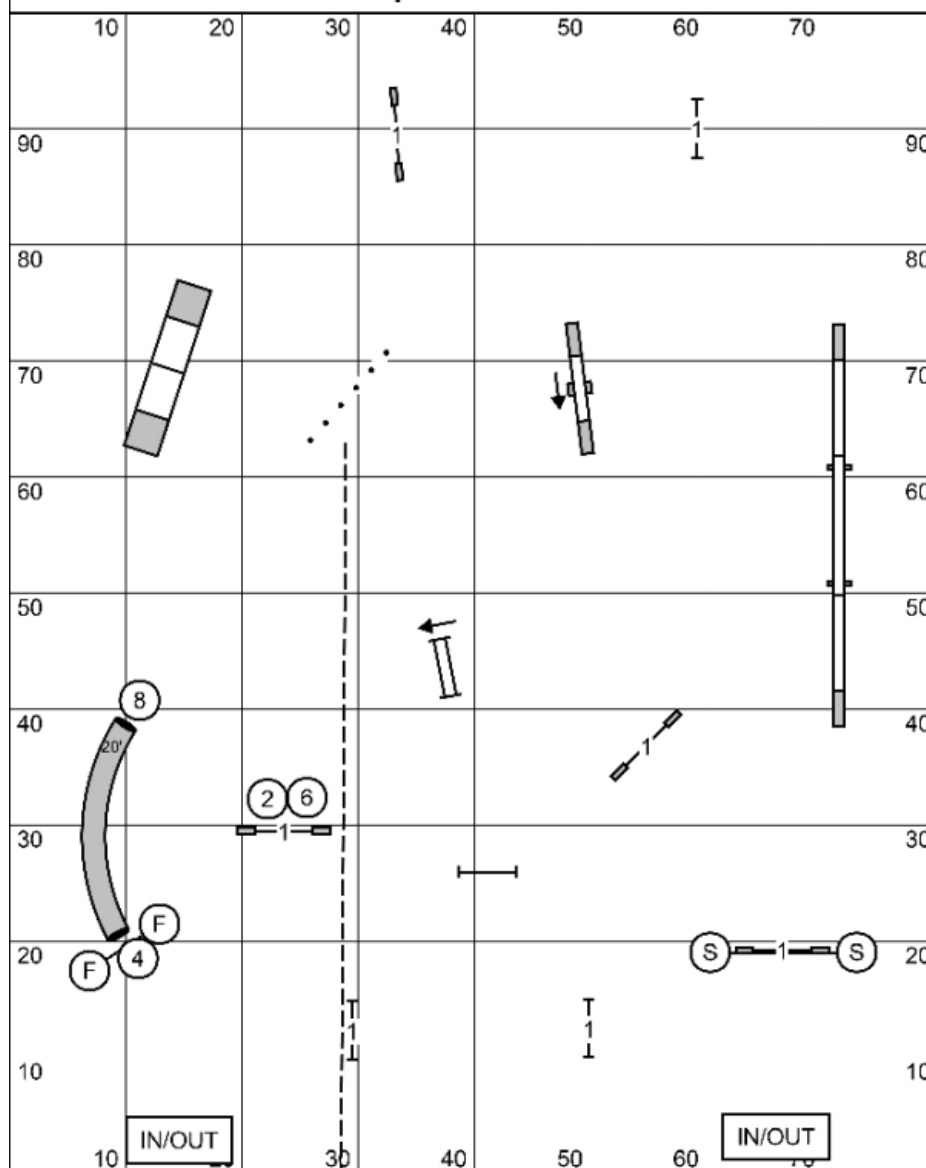
Standard Levels 5/C

Next Dog: Please enter the ring when the team ahead of you is at #16

Standard Levels 5/C  
Judged by: Mike Brownell  
June 13, 2025  
FKPS K-9 Training  
Rochester, MN

Standard Levels 5/C  
Judged by: Mike Brownell  
June 13, 2025  
FKPS K-9 Training  
Rochester, MN

## Jackpot Levels 5/C



**BRIEFING:** Everything may be taken twice successfully for points during the opening time. Back to back is fine as long as it is done safely. In the opening, no two sequentially numbered gamble obstacles may be taken back to back or you negate your gamble. Once the horn blows, you stop accumulating points and must successfully complete the gamble to Q within the time allowed.

1 Point: Single bar jumps  
 3 Point: Tunnels, Weaves, Double (second time)  
 5 Point: A-frame, teeter, Dog Walk  
 7 Point: Double (first time)

### Jackpot Times:

Small dogs: 35 seconds opening 22 seconds closing  
 Large dogs: 30 seconds opening, 20 seconds closing  
 Going over the total game time will result in a NQ.  
 The second buzzer is 6 seconds over time.

To Qualify, teams must complete the Gamble along with earning enough opening points within the time allowed

Level 1 32 point  
 Level 2 36 points  
 Level 3 40 points  
 Level 5, C 44 points

Specialists and Enthusiasts: Two points fewer

The start line is bi-directional

Next Dog: Please enter the ring when the team ahead of you is at the gamble

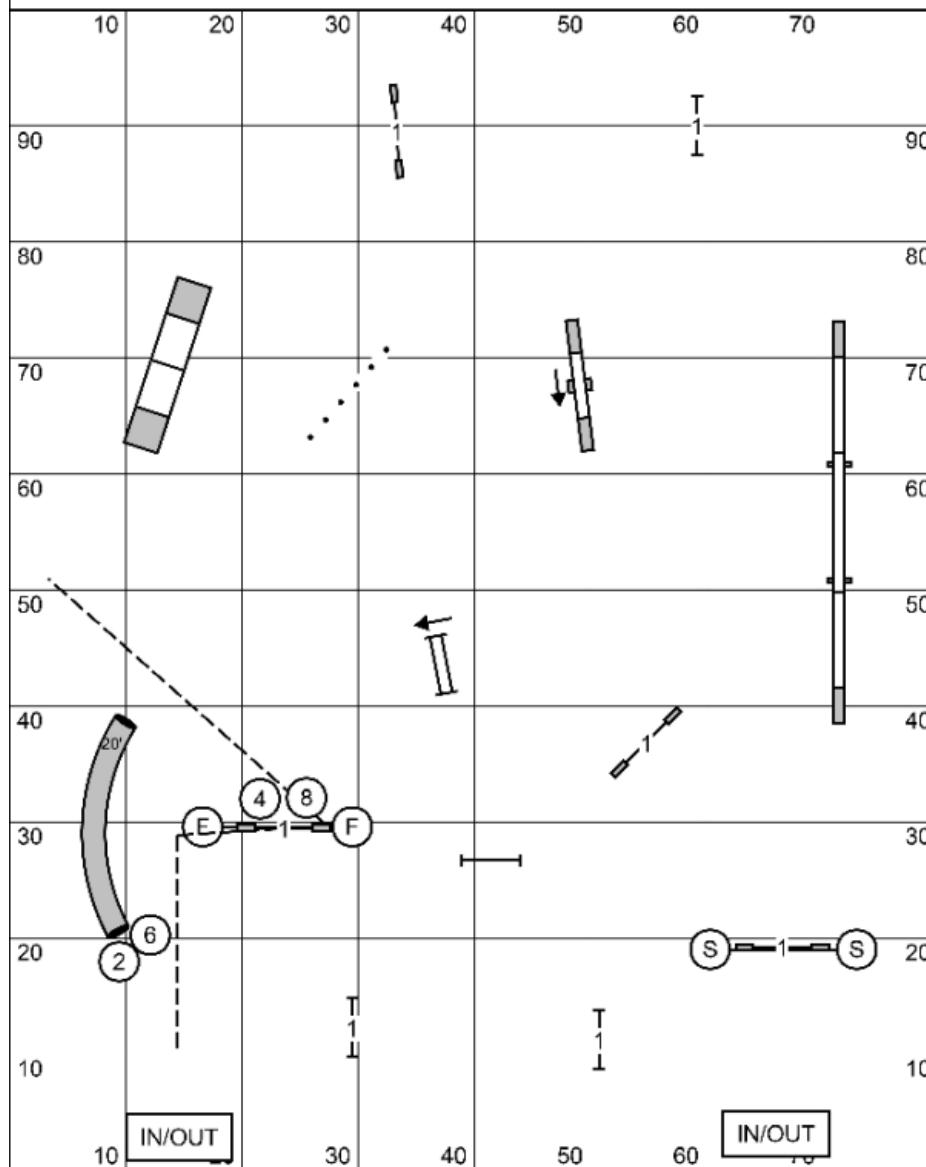
Jackpot Levels 5/C  
 Judged by: Mike Brownell  
 June 13, 2025  
 FKPS K-9 Training  
 Rochester, MN

[illegible]

The start line is bi-directional

Jackpot Level 3  
Judged by: Mike Brownell  
June 13, 2025  
FKPS K-9 Training  
Rochester, MN

## Jackpot Levels 1/2



**BRIEFING:** Everything may be taken twice successfully for points during the opening time. Back to back is fine as long as it is done safely. In the opening, no two sequentially numbered gamble obstacles may be taken back to back or you negate your gamble. Once the horn blows, you stop accumulating points and must successfully complete the gamble to Q within the time allowed.

1 Point: Single bar jumps  
 3 Point: Tunnels, Weaves, Double (second time)  
 5 Point: A-frame, teeter, Dog Walk  
 7 Point: Double (first time)

**Jackpot Times:**

Small dogs: 35 seconds opening 22 seconds closing

Large dogs: 30 seconds opening, 20 seconds closing

Going over the total game time will result in a NQ.

The second buzzer is 6 seconds over time.

To Qualify, teams must complete the Gamble along with earning enough opening points within the time allowed

Level 1 32 point

Level 2 36 points

Level 3 40 points

Level 5, C 44 points

Specialists and Enthusiasts: Two points fewer

The start line is bi-directional

Next Dog: Please enter the ring when the team ahead of you is at the gamble

Jackpot Levels 1/2  
 Judged by: Mike Brownell  
 June 13, 2025  
 FKPS K-9 Training  
 Rochester, MN



[illegible]

\*In the opening: All obstacles are bi-/multi- directional.  
For combo #7, order and direction do not matter: just  
get all parts.

\* In the closing: #2 IS bi-directional. Everything else must be done as labeled.

Points:

Level 2	28 points
---------	-----------

Level 3	30 points
---------	-----------

Level 5, C	32 points
------------	-----------

Enthusiast/Specialist – 2 points fewer at each level

Small Dogs: 50 Seconds

Large Dogs: 45 Seconds

16" Vets jumping 12" get 1

\* The start line is bi-directional

Snooker Levels 3/5/C  
Judged by: Mike Brownell  
June 13, 2025  
FKPS K-9 Training  
Rochester, MN

### Snooker Levels 1/2

- \*In the opening: All obstacles are bi-/multi- directional.
- \*You may do a color multiple times, but reds may only be used once
- \* In the closing: #2 IS bi-directional. Everything else must be done as labeled.
- \* if you hear me say thank you or a whistle-please proceed to the finish jump.

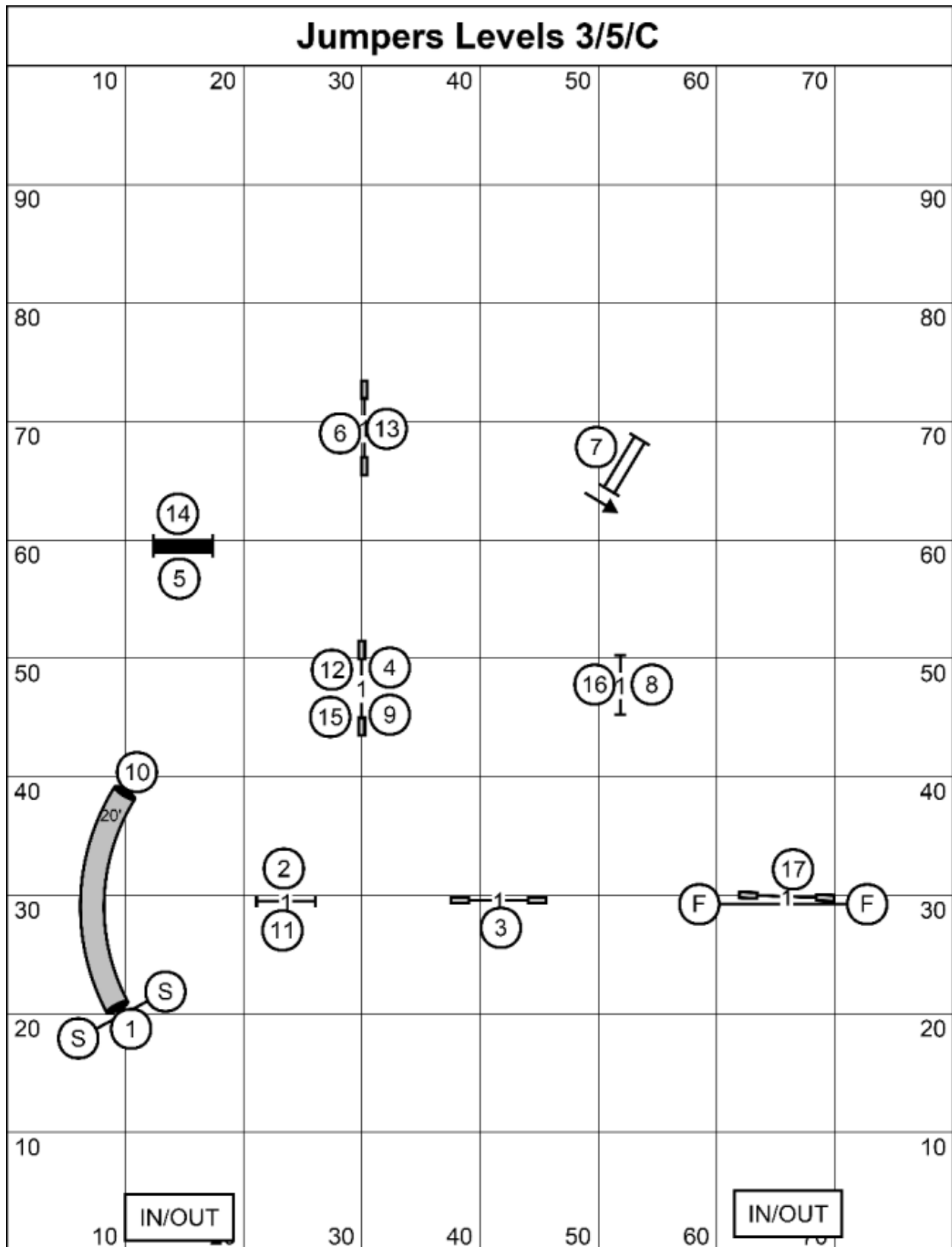
Level 1      26 points  
Level 2      28 points  
Level 3      30 points  
Level 5, C    32 points  
Enthusiast/Specialist – 2 points fewer at each level

Small Dogs: 50 Seconds  
Large Dogs: 45 Seconds  
16" Vets jumping 12" get big dog time.

Next Dog: Please enter the ring when the team ahead of you is at #4 in the closing

CourseDesigner.com (CD v4.34)

# Jumpers Levels 3/5/C



Next Dog: Please  
enter the ring when  
the team ahead of you  
is at #15

Jumpers Levels 3/5/C  
Judged by: Mike Brownell  
June 13, 2025  
FKPS K-9 Training  
Rochester, MN

