

Opening:

1-3-5-7 DW=7

wp = 3

C24,C20, P20,P16 24sec

C16,C12,P12 P8 26sec

C8 P4 29 sec

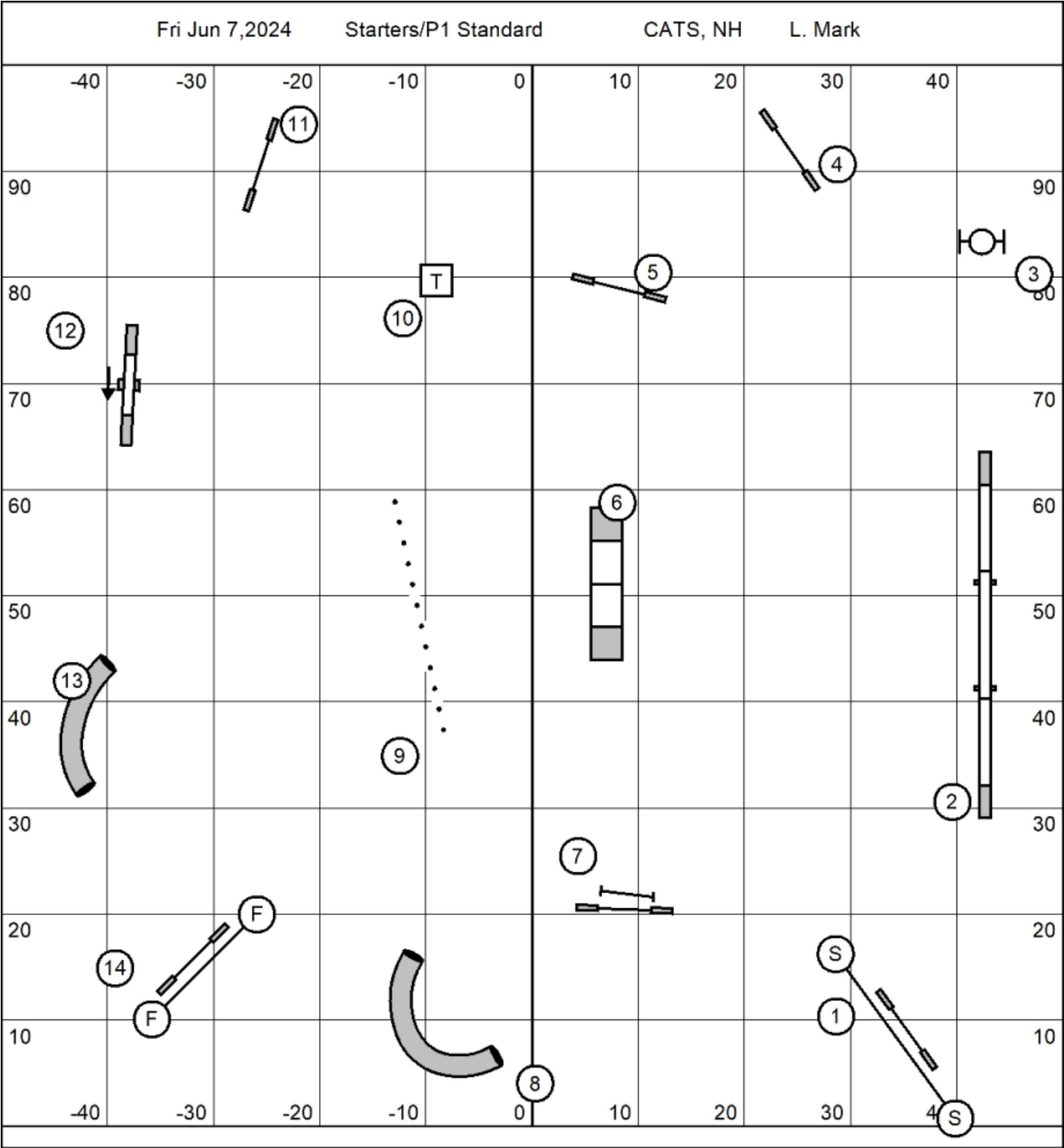
Closing:

C24 C20 P20 P16 17 sec

C16 C12 P12 P8 19 sec

C8 P4 21 sec

Gamble must be done in order  
but may start anywhere. (C bidirectional)  
No refusals called, standard faults results  
in 0 points for that obstacle.  
And off course stops scoring (whistle).  
Each obstacle worth 5pts  
Lose all gamble pts if over time



L. Mark

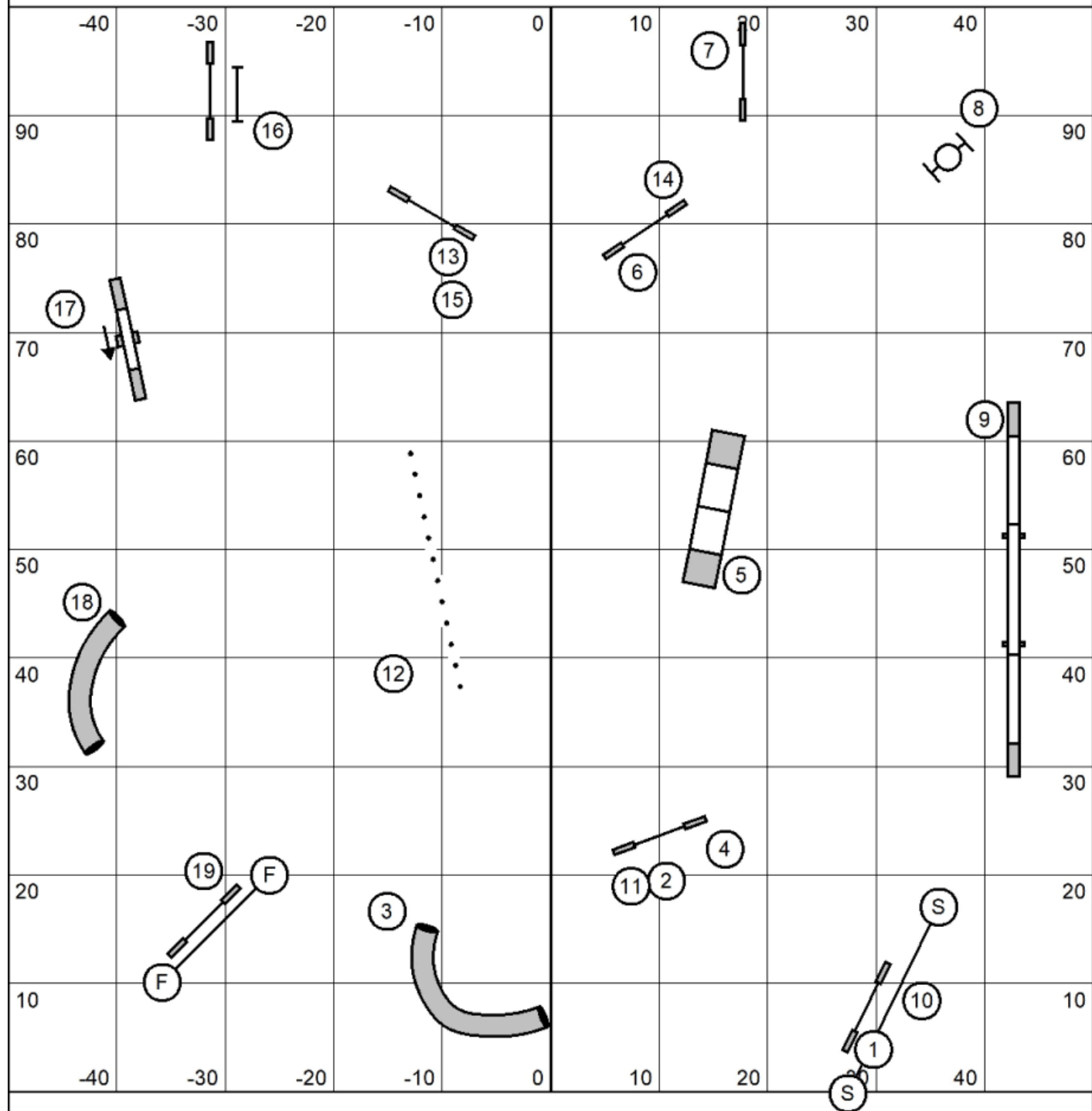


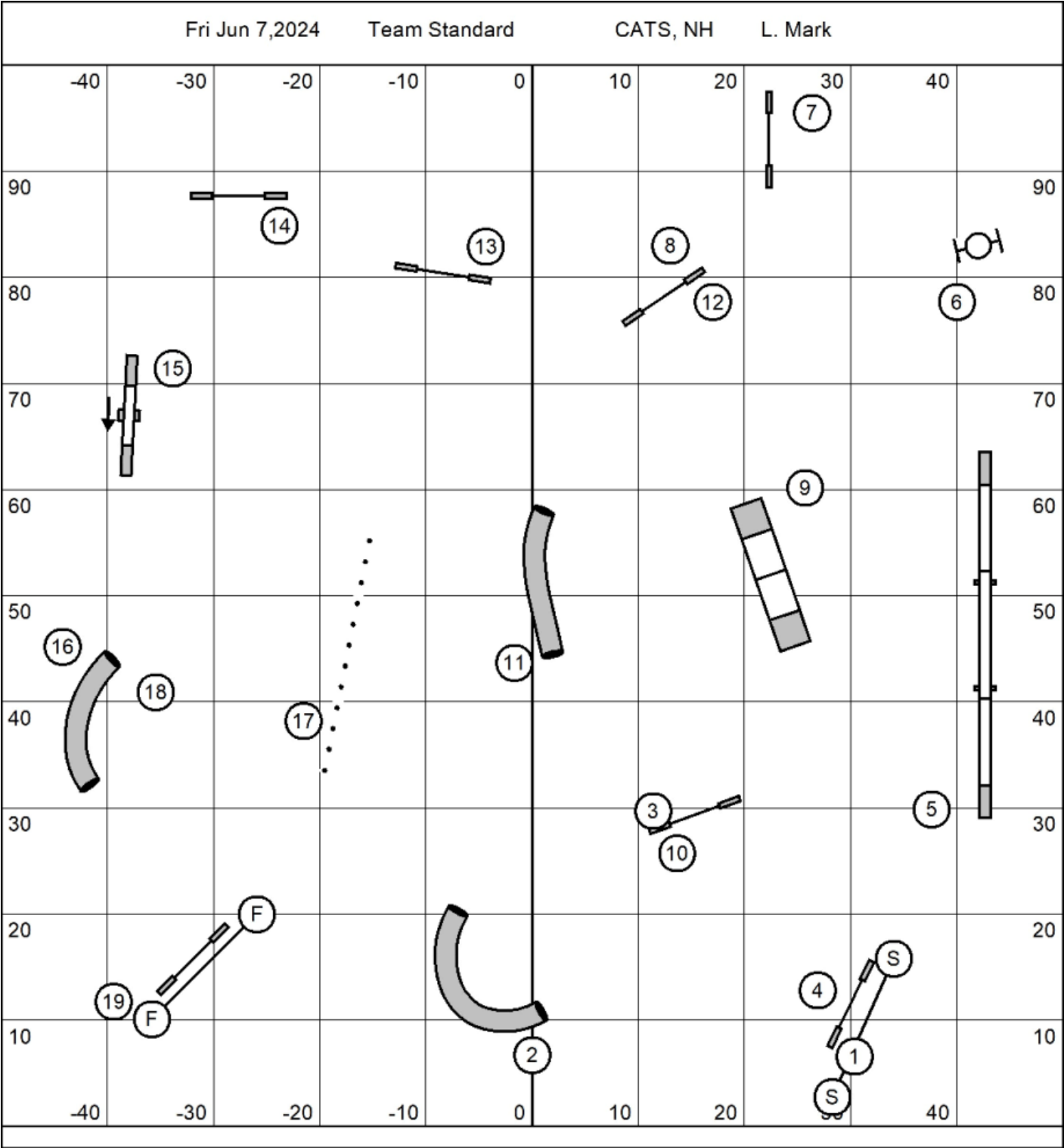
Fri Jun 7, 2024

Masters/P3/Vet Standard

CATS, NH

L. Mark



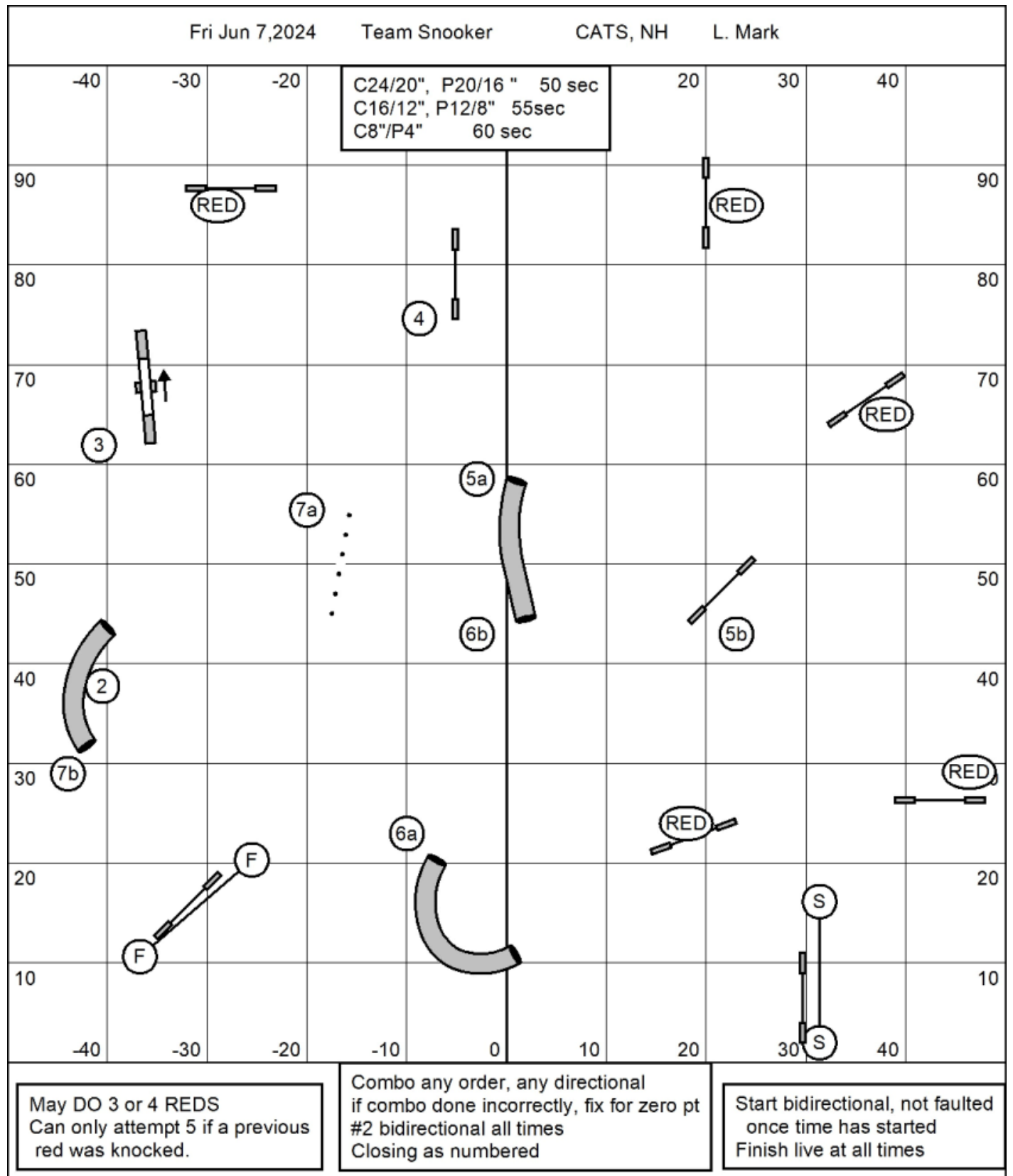


Fri Jun 7, 2024

Team Snooker

CATS, NH

L. Mark



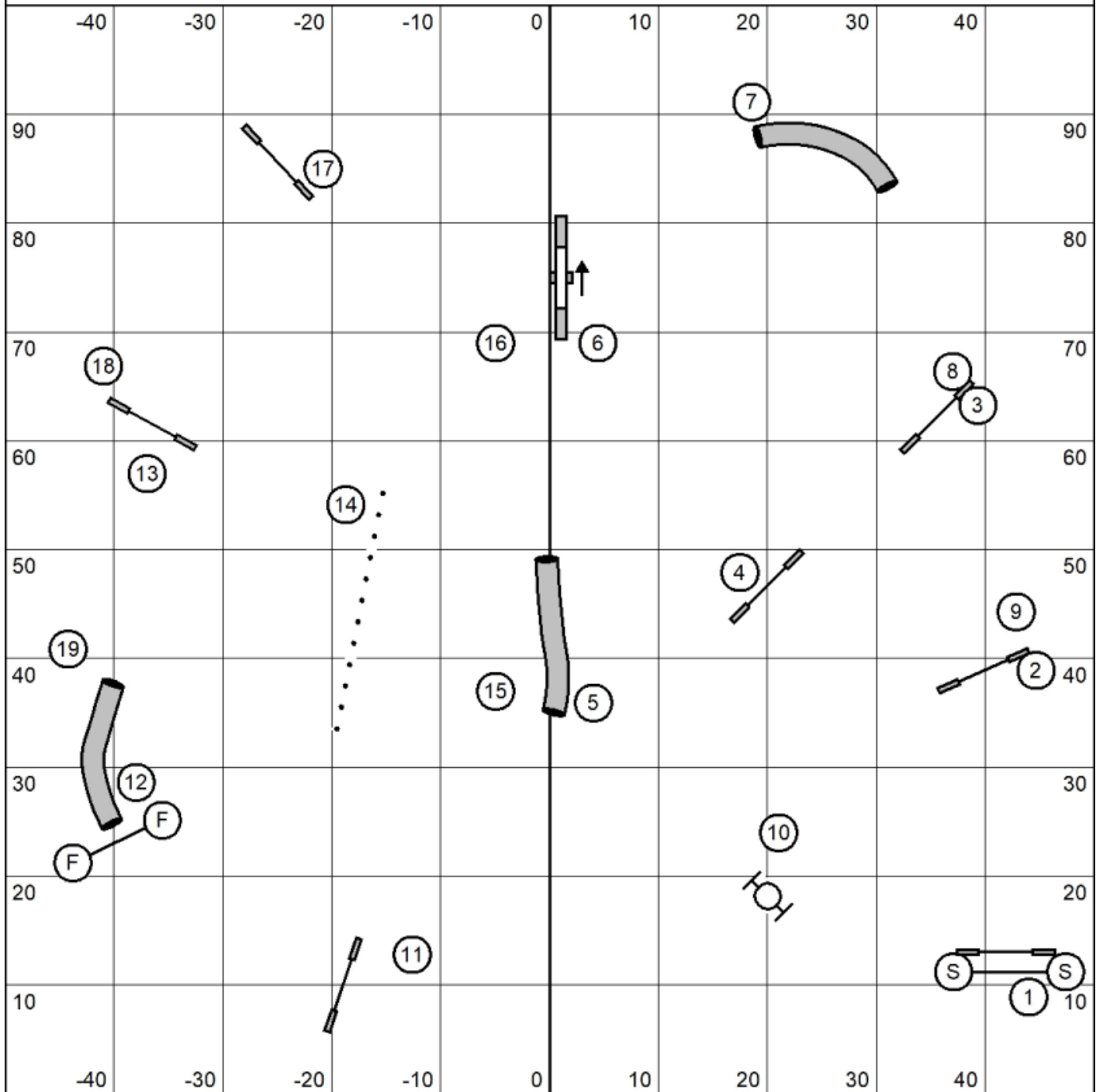


Fri Jun 7, 2024

Team Relay

CATS, NH

L. Mark



Make sure last dog gets a time (do #19)!!

Don't forget a baton!!!

Three dog Relay  
1st dog #1-10  
2nd dog #1-10  
3rd dog #11-19