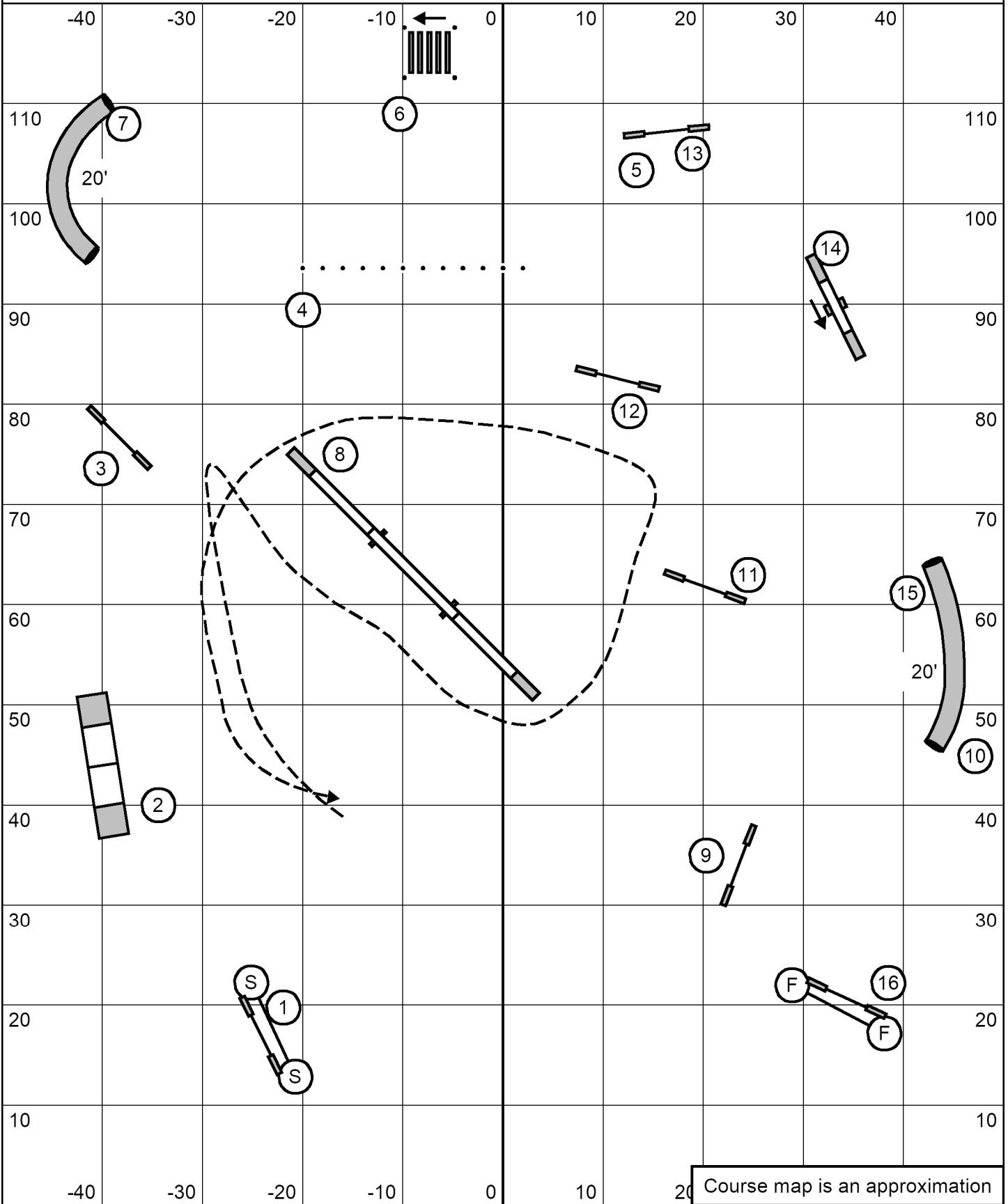
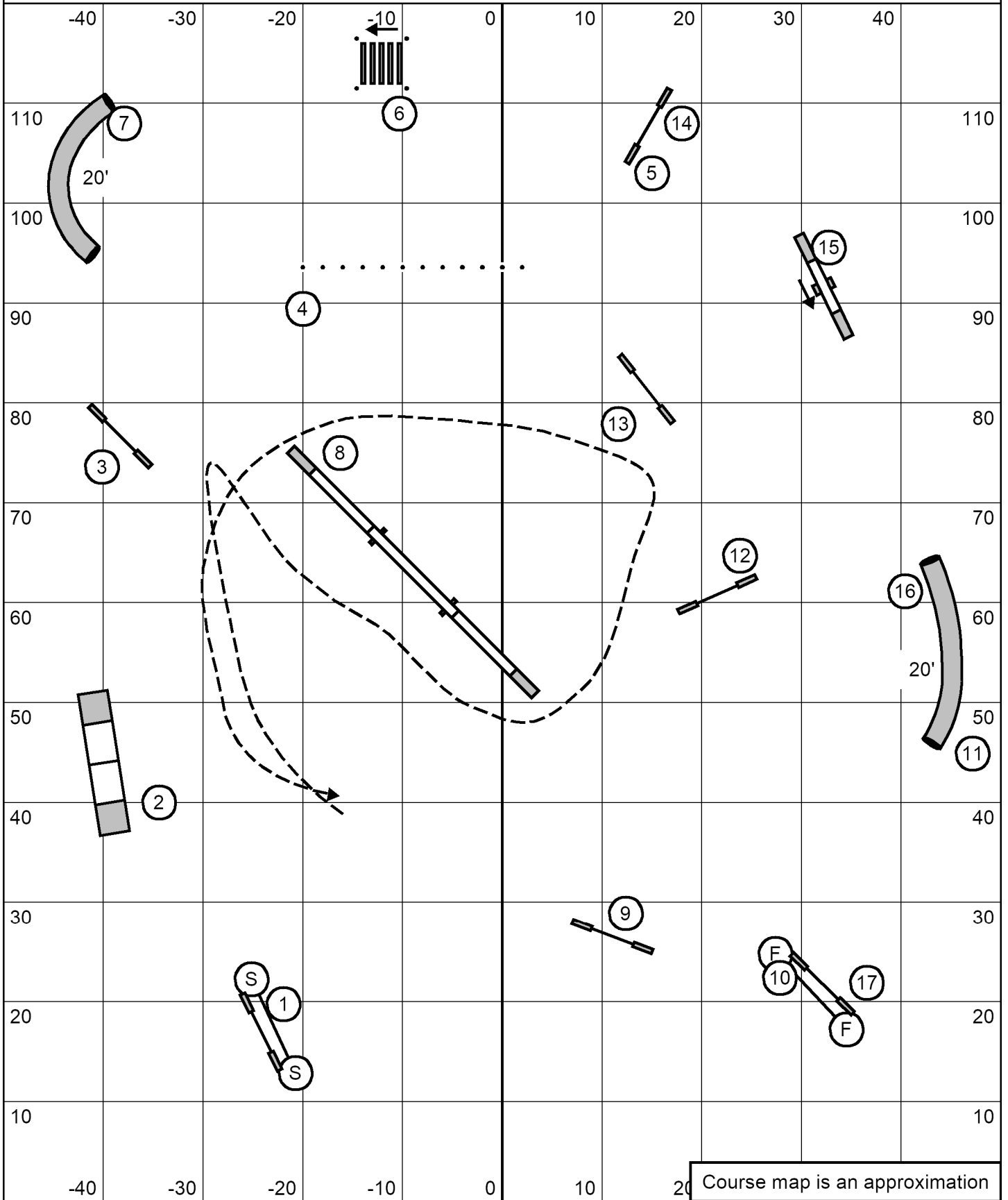


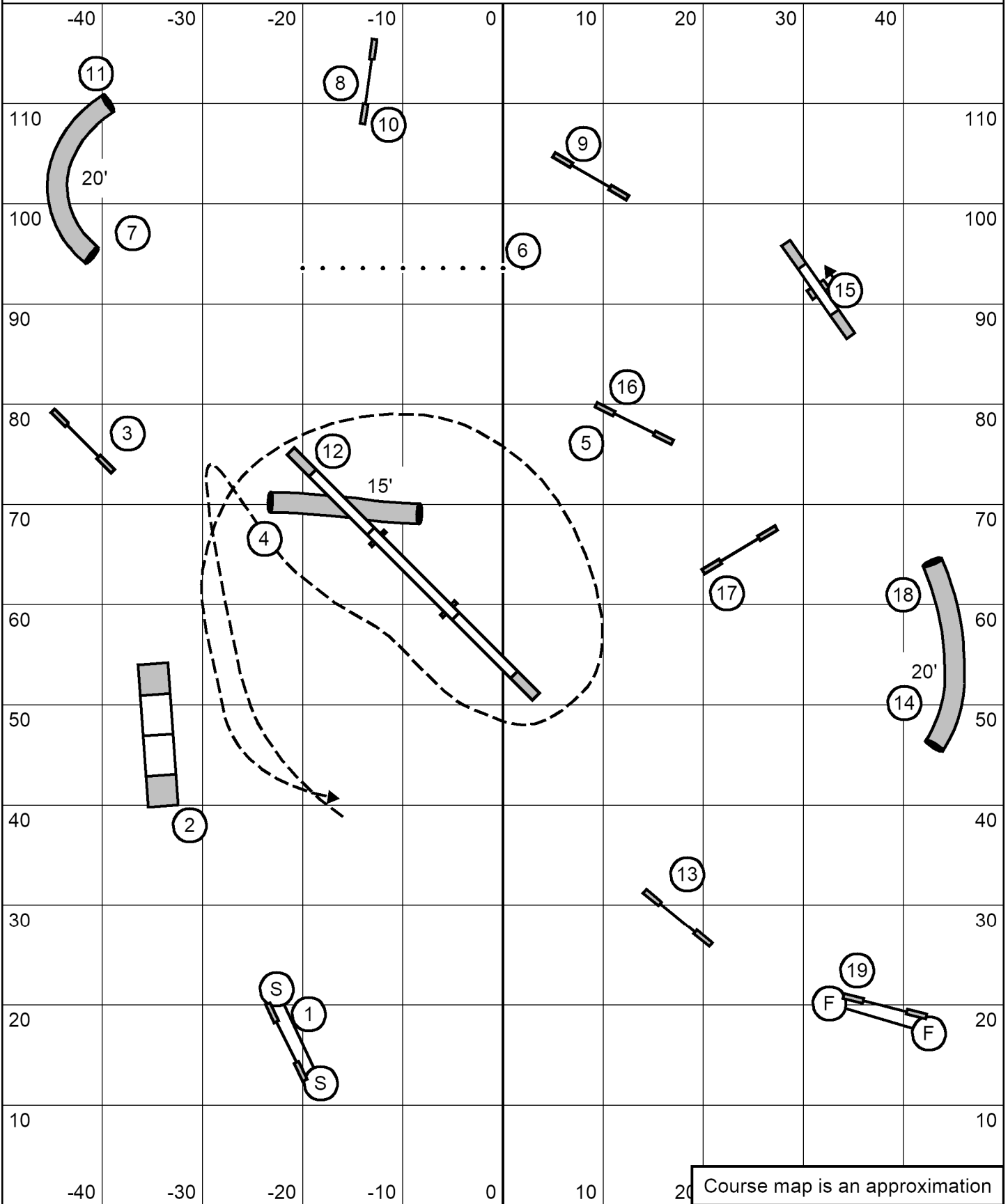
Opening:
 25 seconds
 25 points total including successful gamble to Q
 Start and finish jumps worth 1 point
 Finish line stops clock only after first buzzer
 Each obstacle can be taken twice for points
 Back-to-back is OK
 Contact-to-contact is NOT OK

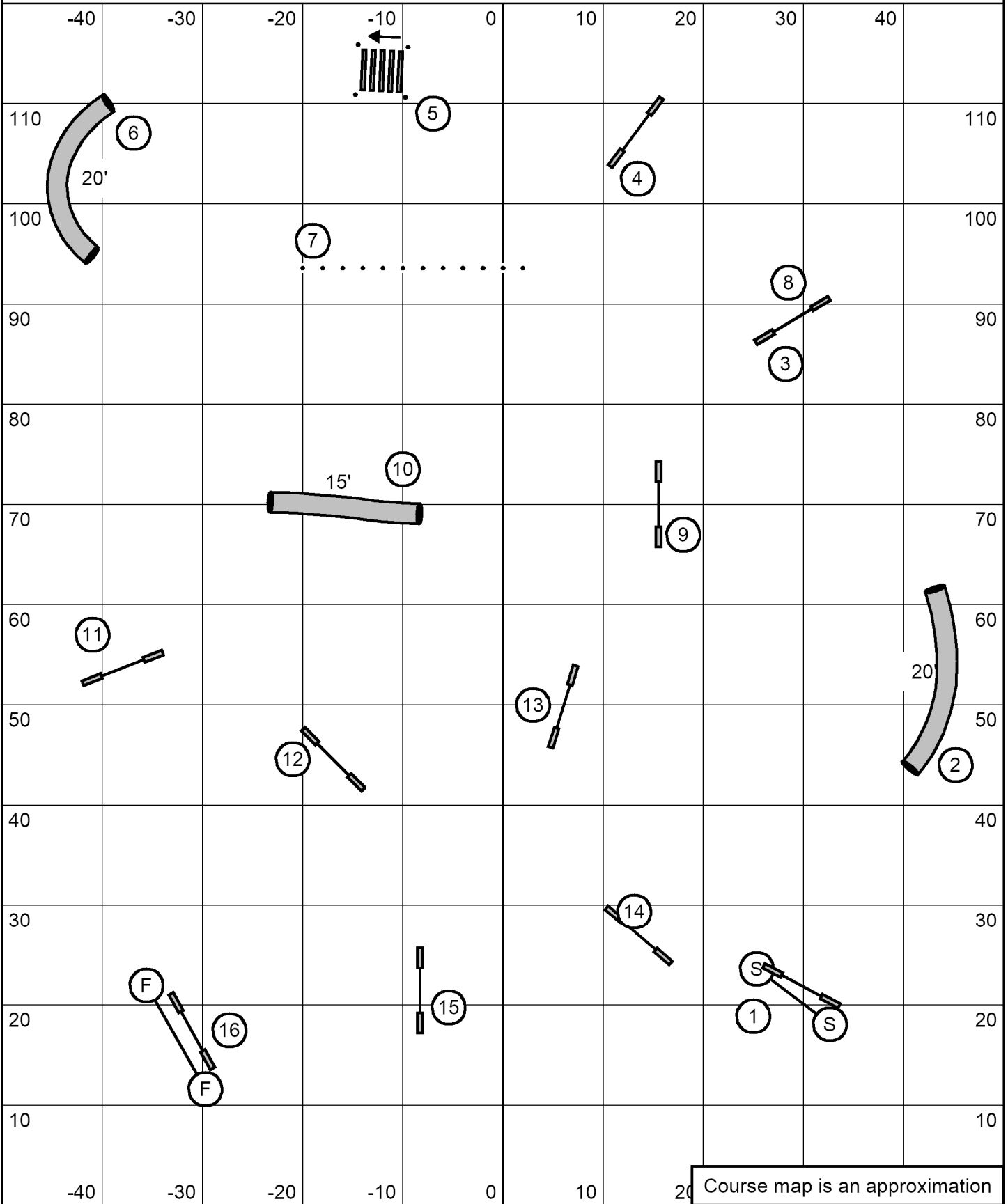
Closing:
 Black Squares: 15 points
 White Circles: 10 points
 4S/8/12/16 - 15s
 16S/20/22/24 - 13s

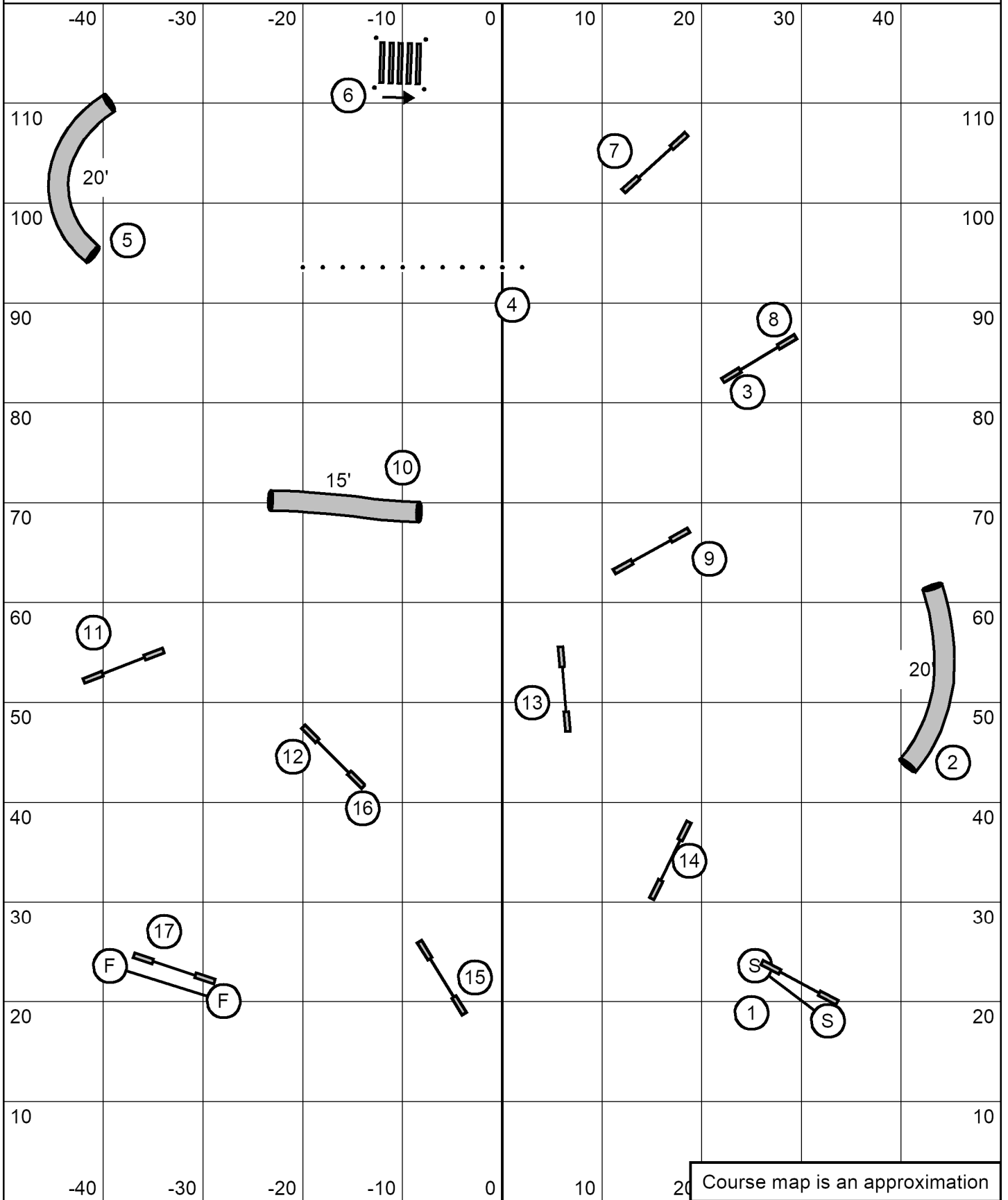


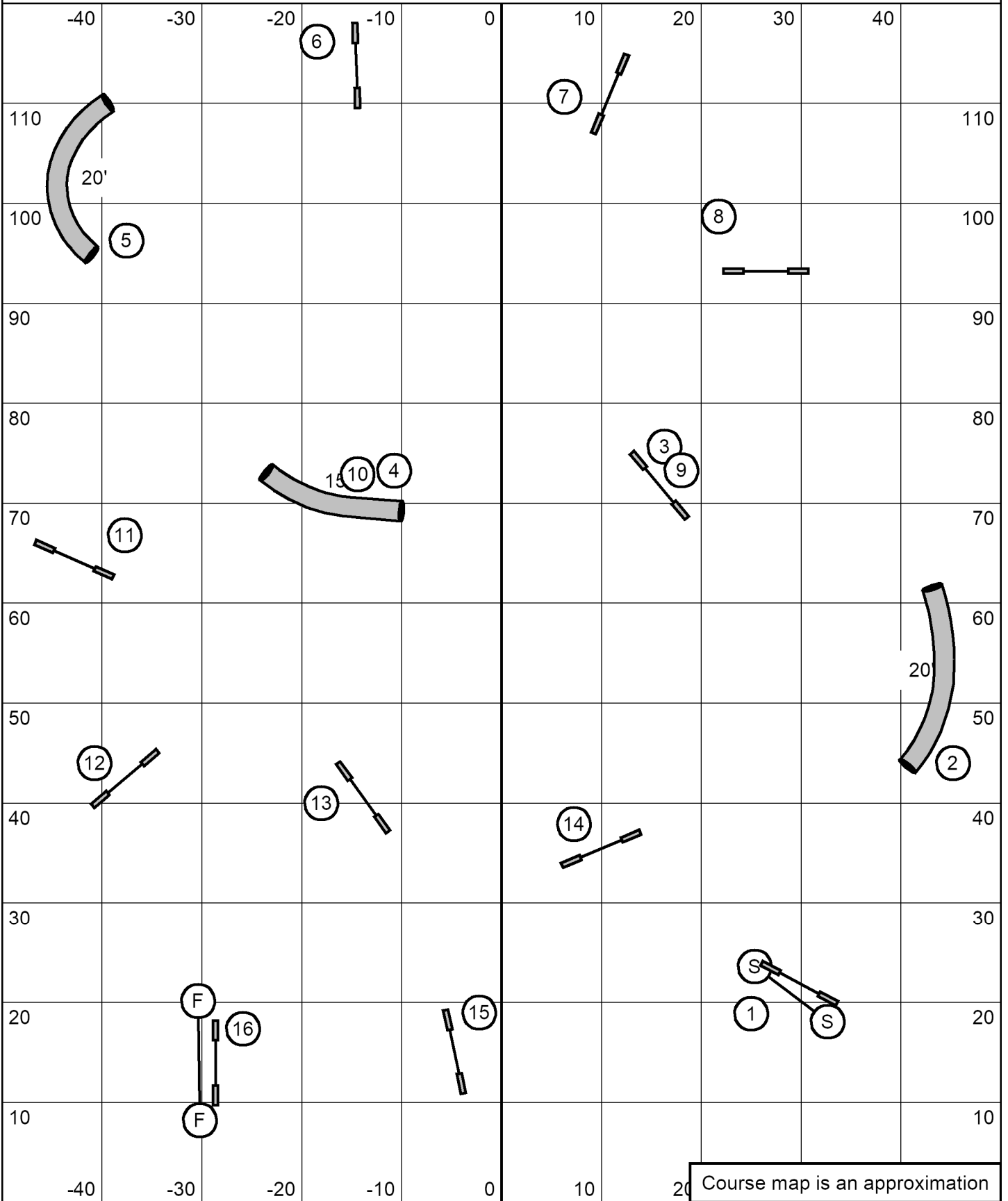


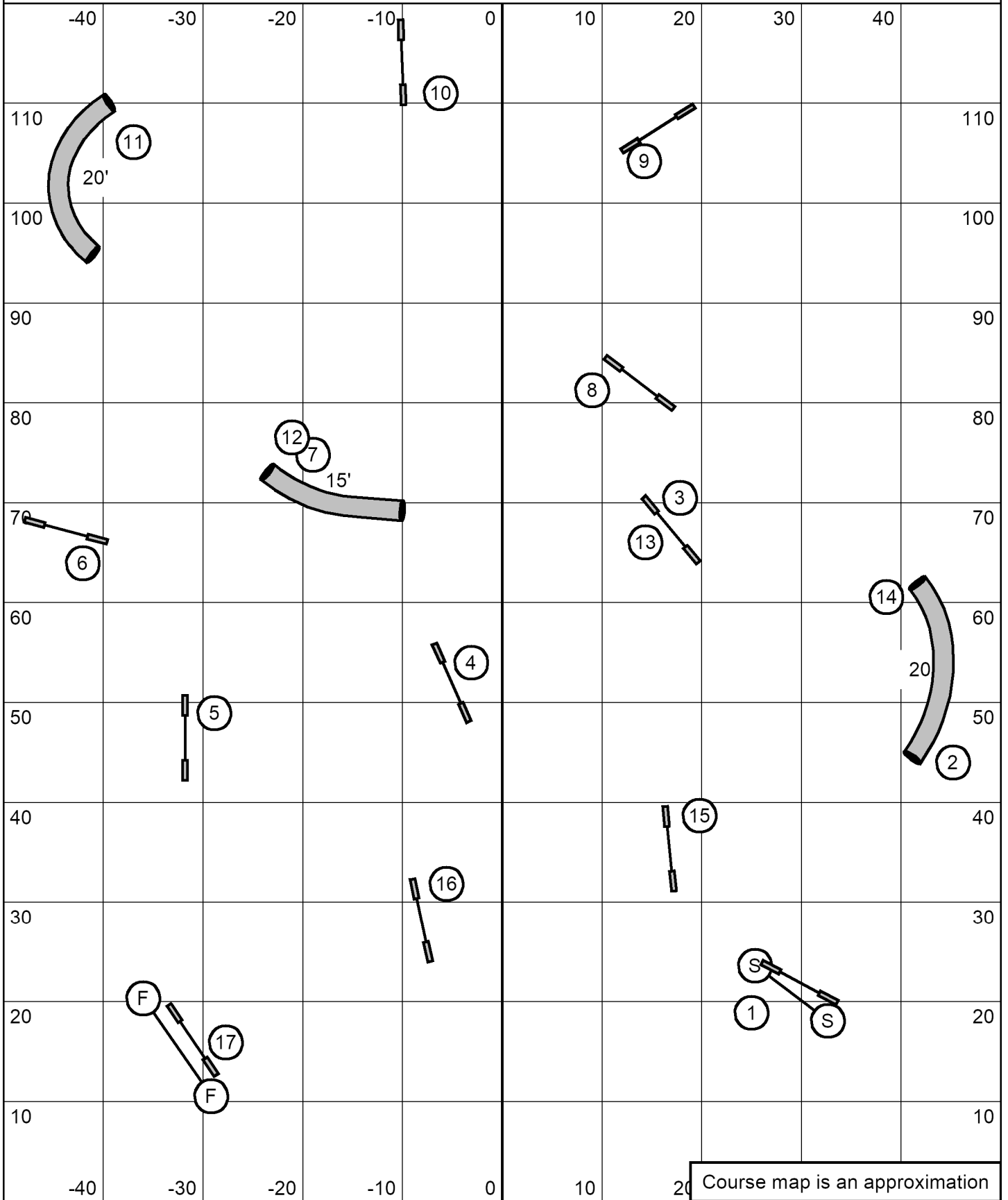
Course map is an approximation











Course map is an approximation