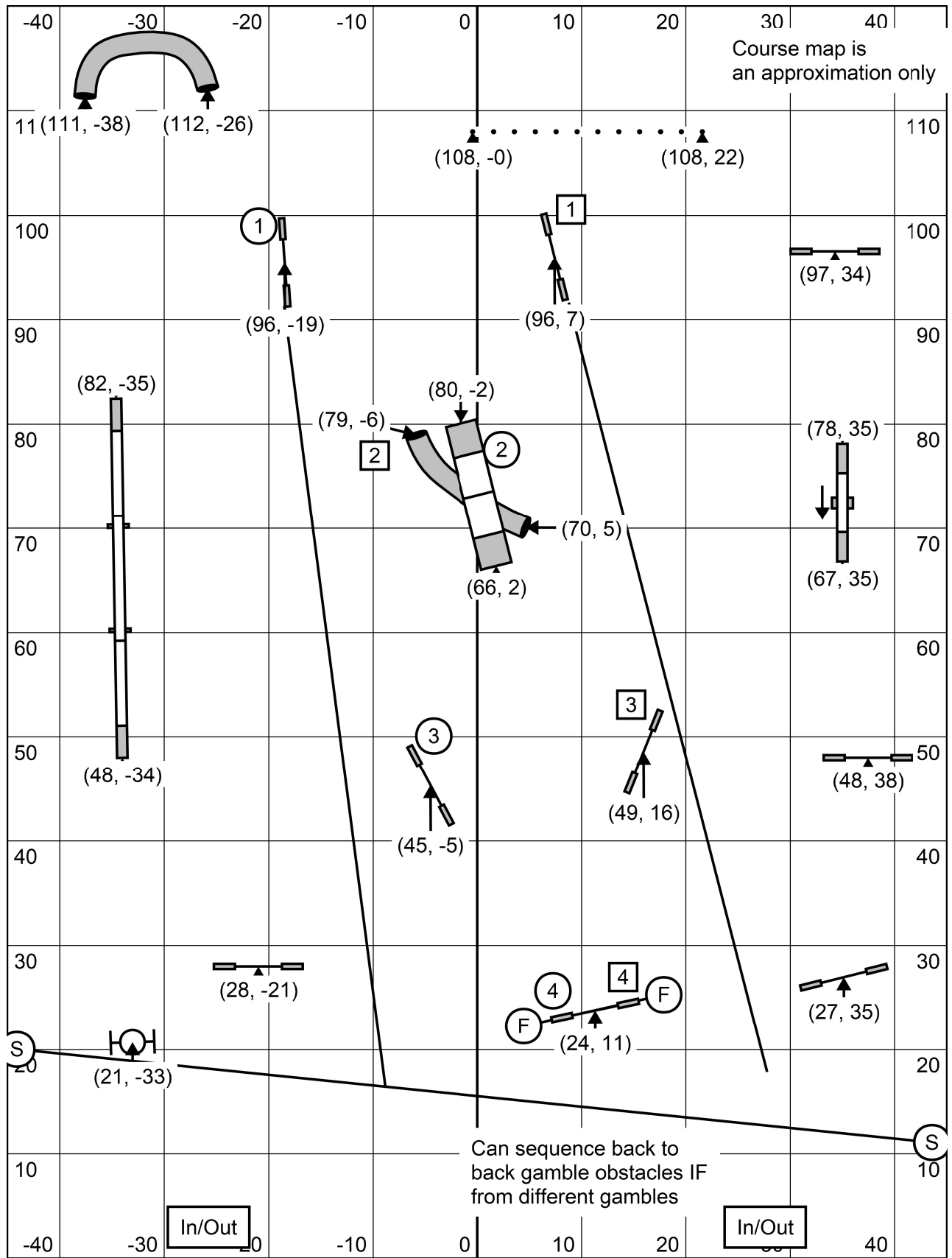


Riverside K9 USDAA Trial
 Masters Standard
 Judge: Blake Rivas
 Sunday April 10, 2022

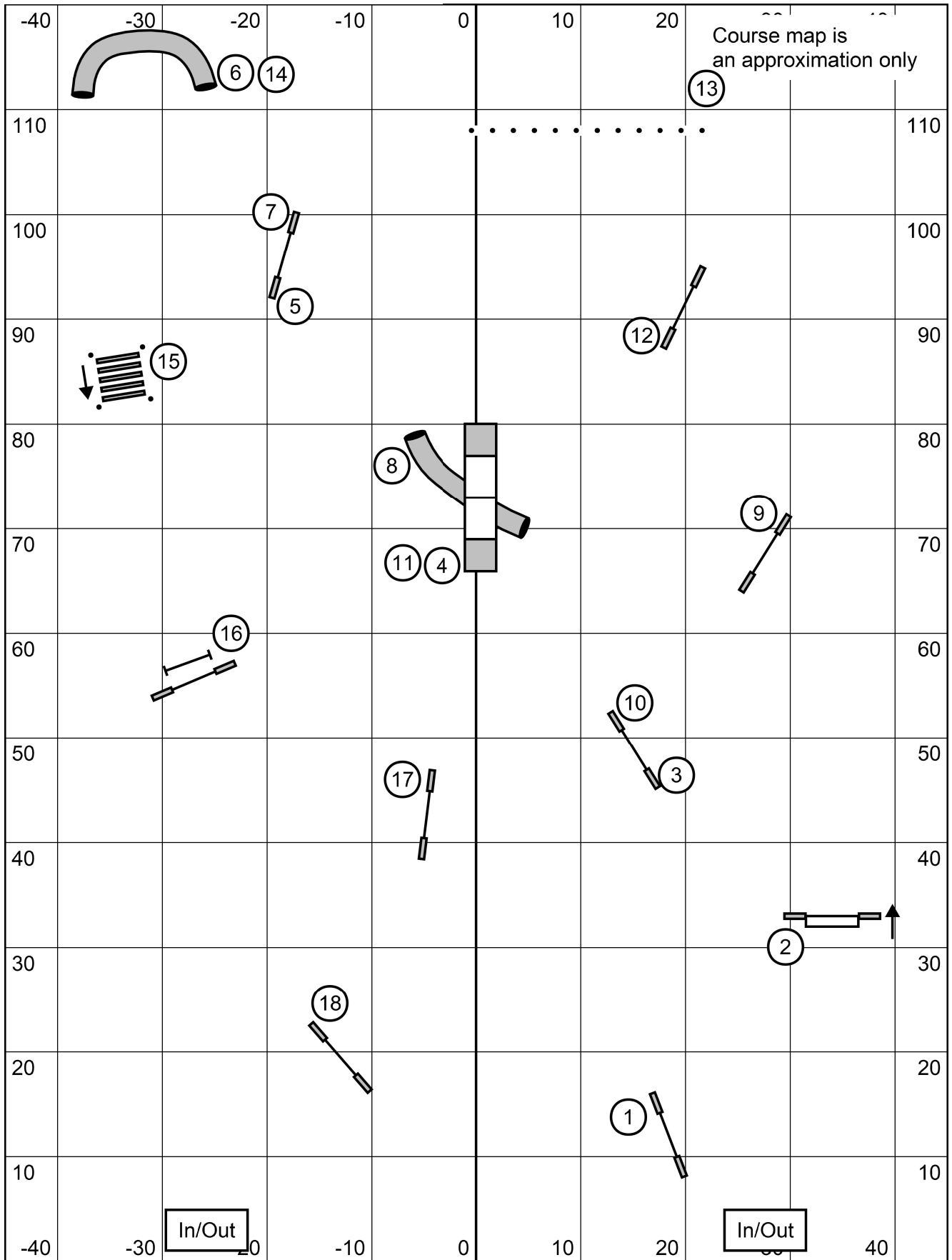
Course map is
 an approximation only



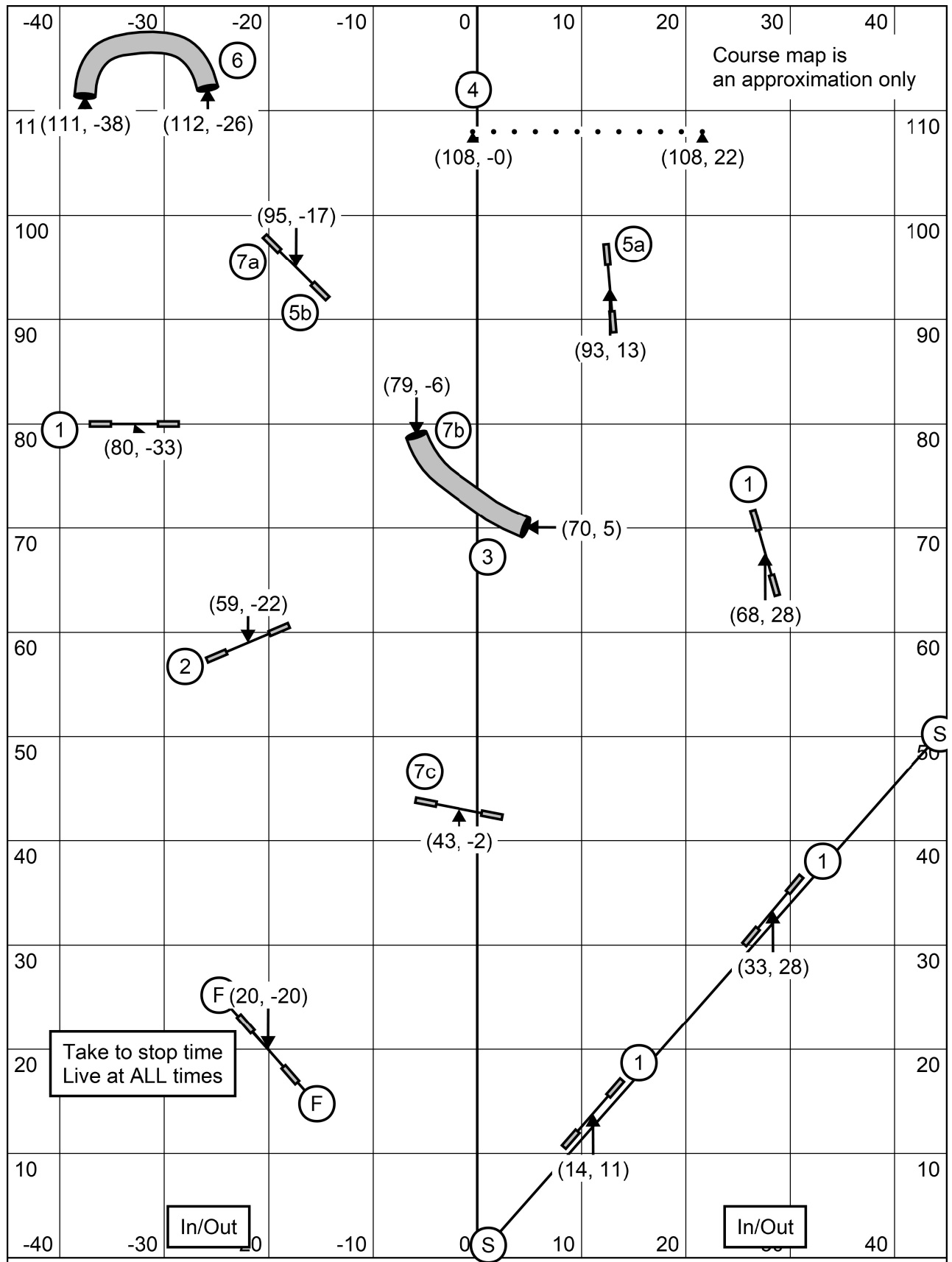
1-3-5-7 System
 Dogwalk = 7 points
 25s Opening
 Choose either circle or square gamble

Riverside K9 USDAA Trial
 Masters Gamblers
 Judge: Blake Rivas
 Sunday April 10, 2022

Closing:
 20/22/24: 16s
 14/16: 17s
 10/12: 18s
 Perf +1
 Vets +3



Riverside K9 USDAA Trial
 Steeplechase
 Judge: Blake Rivas
 Sunday April 10, 2022



Take to stop time
Live at ALL times

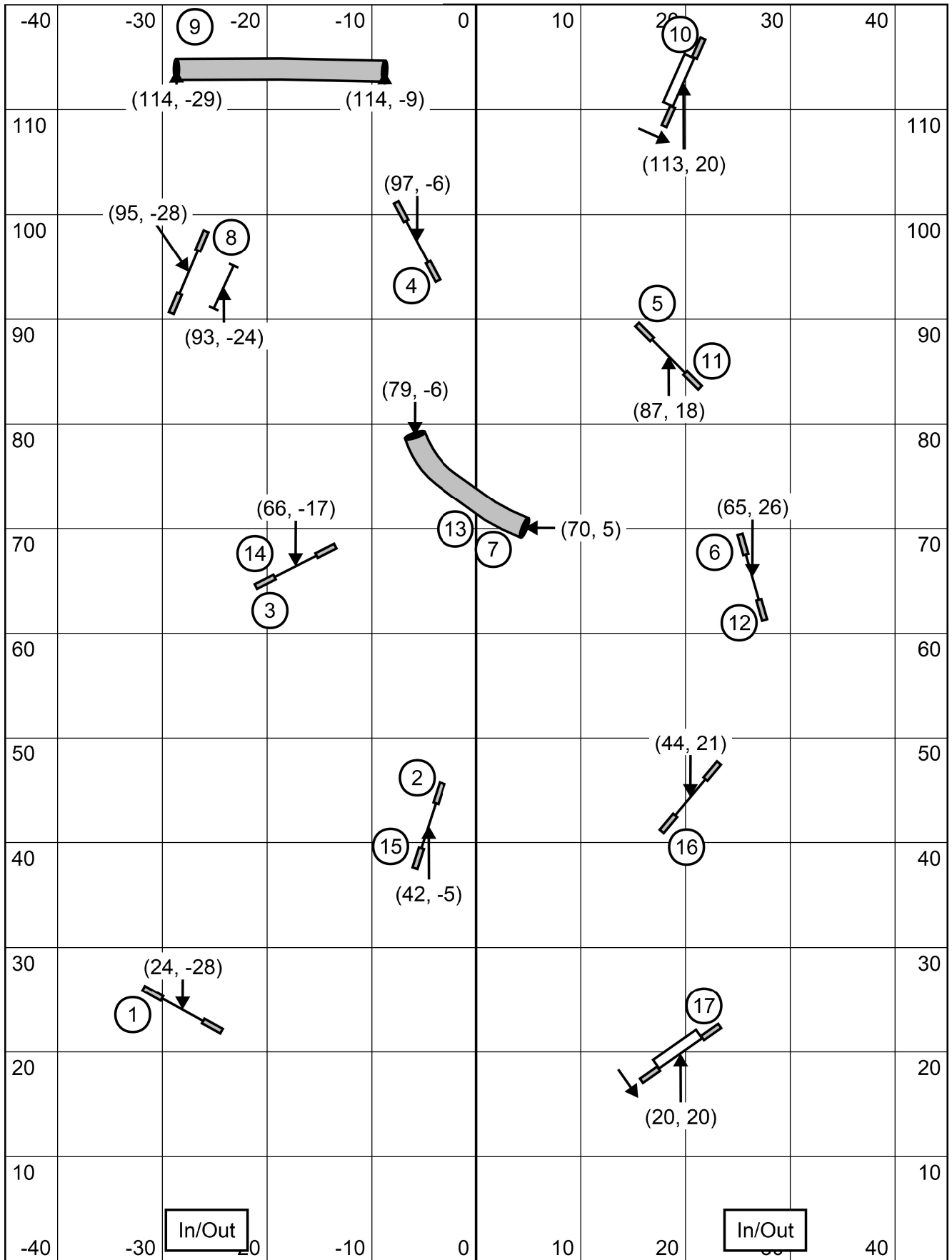
In/Out

In/Out

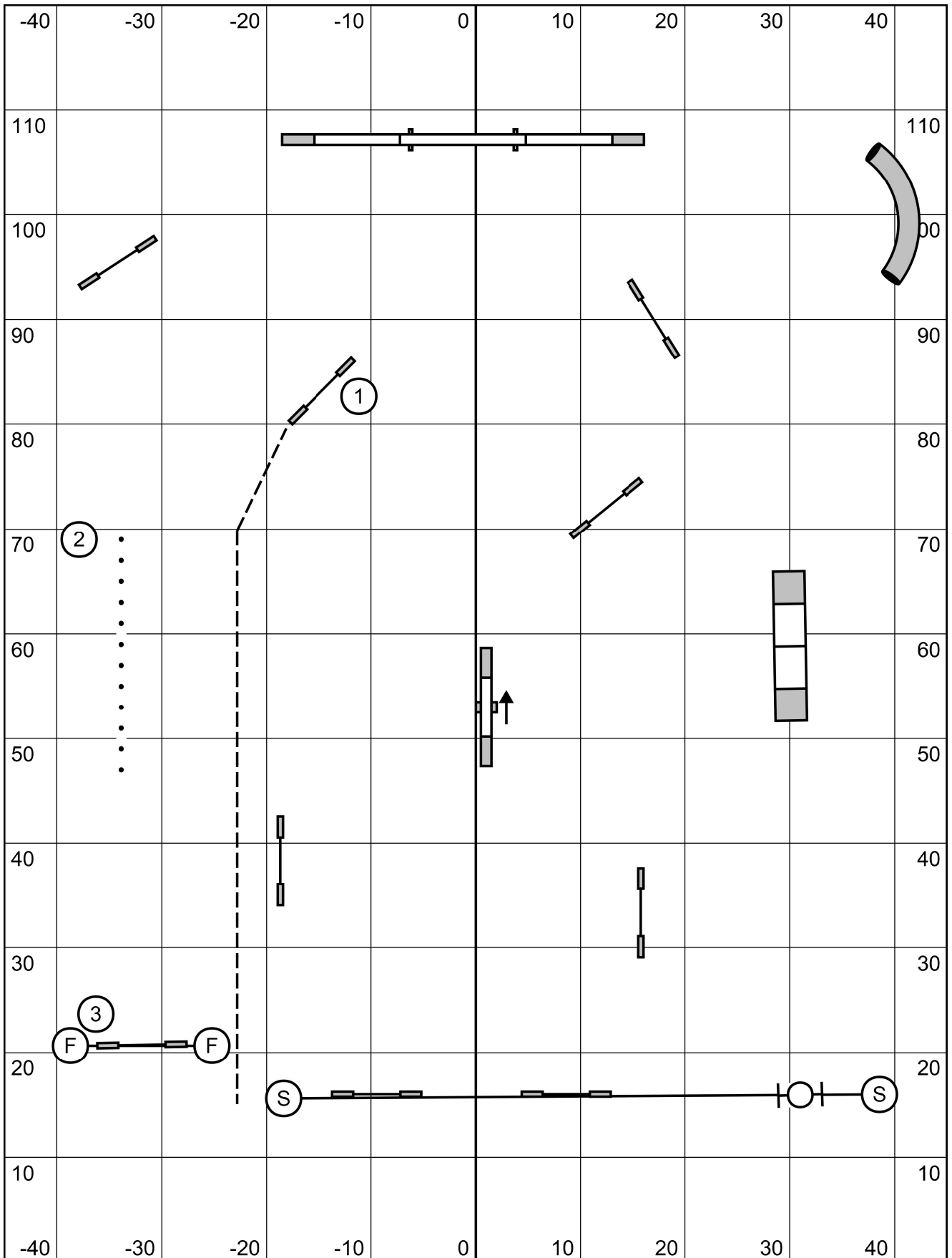
Times:
20s: 50s
14/16: 52s
10/12: 54s
Perf +2s
Vets +4s

Riverside K9 USDAA Trial
Masters/PIII/Vets Snooker
Judge: Blake Rivas
Sunday April 10, 2022

Take 3 or 4 reds
Combos any way in opening
#2 bidirectional in closing

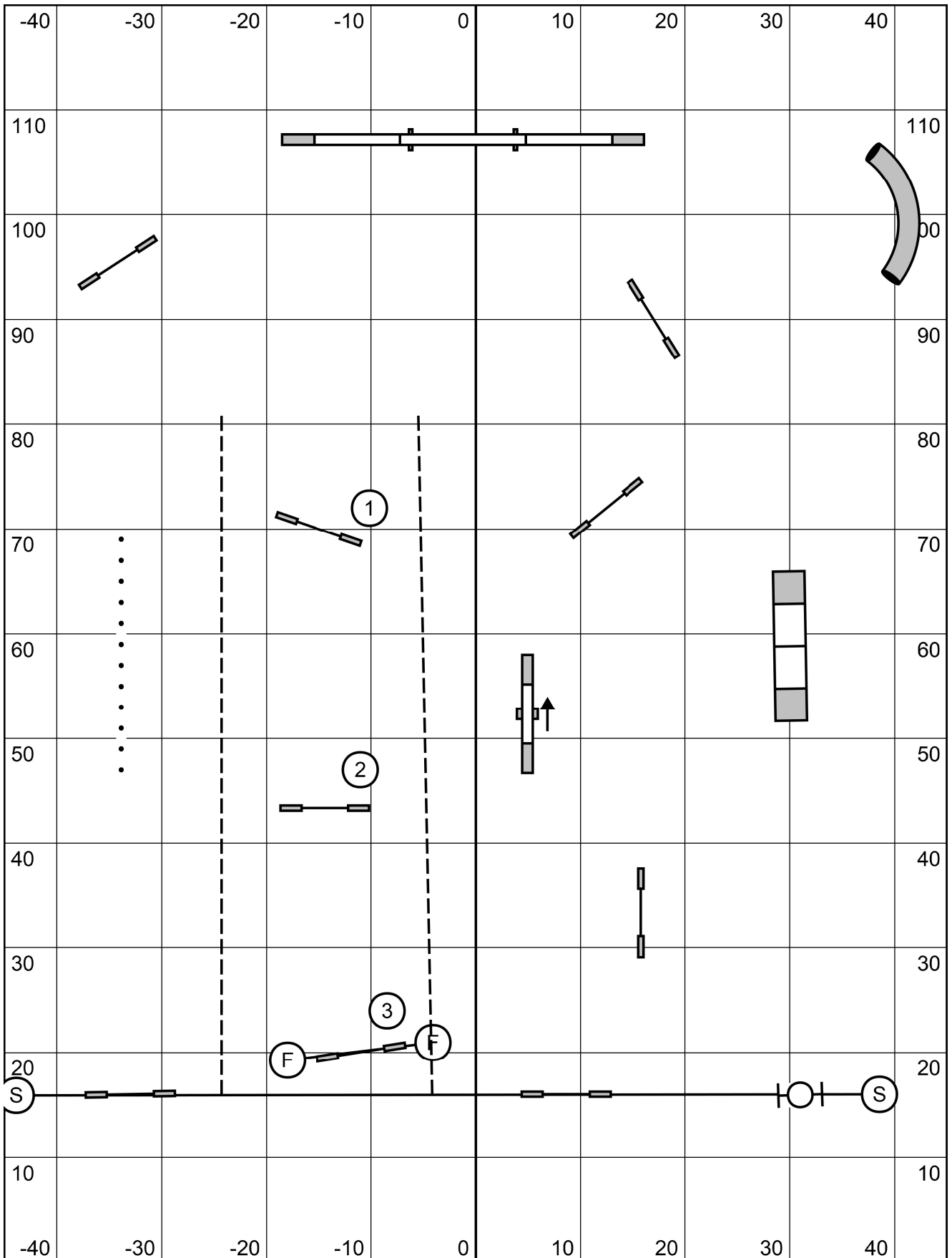


Riverside K9 USDAA Trial
 Masters/P/III/Vets Jumpers
 Judge: Blake Rivas
 Sunday April 10, 2022



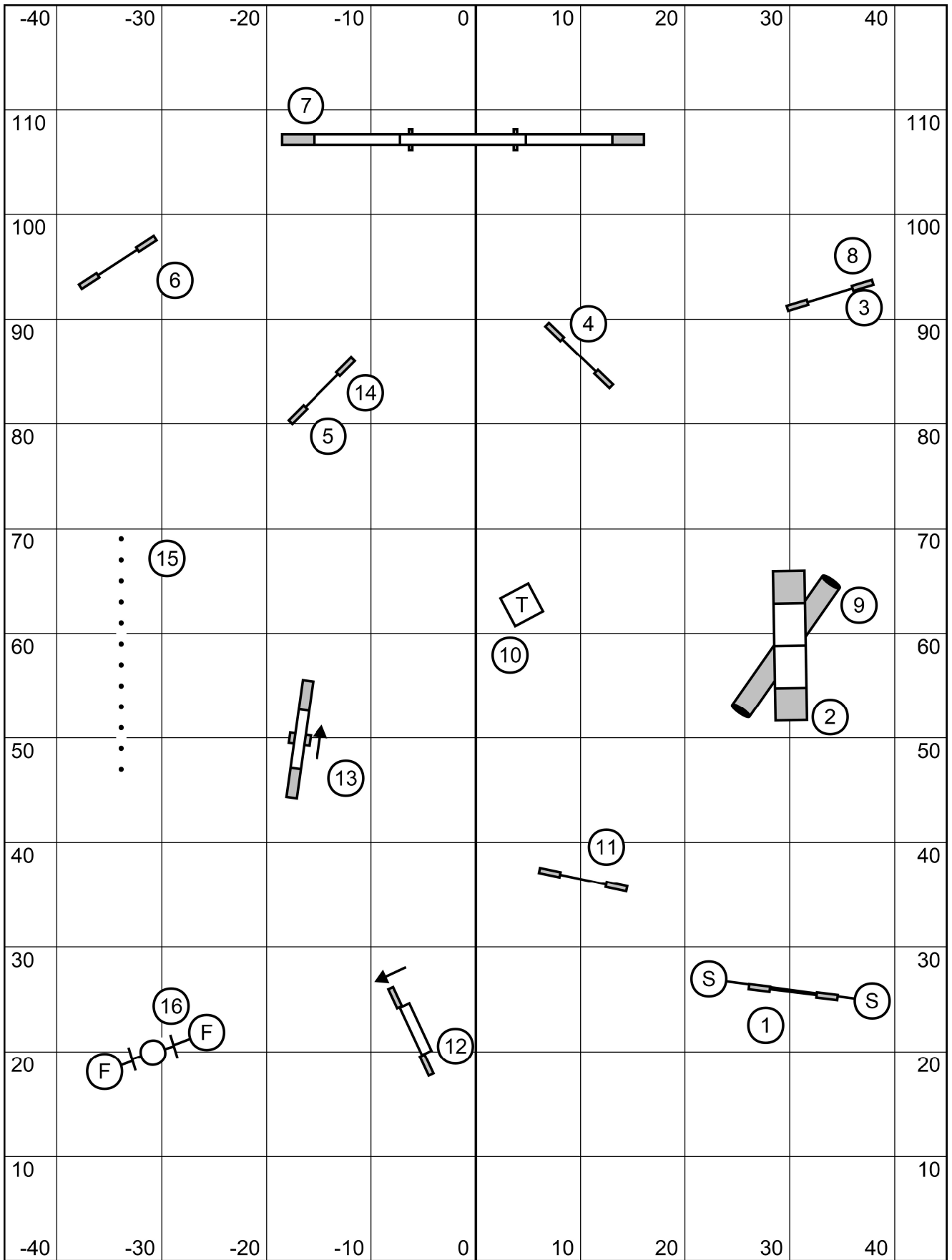
Riverside Canine
 Advanced/PII Gamblers
 Sunday, April 10th, 2022
 Lauren Hansen Alers

1-2-3-5 system, Aframe is worth 5
 Back to back and contact to contact OK
 25 second opening
 Closing 24/22/20" 16s, 16/14" 17s, 12/10" 18s, +1 for perf.

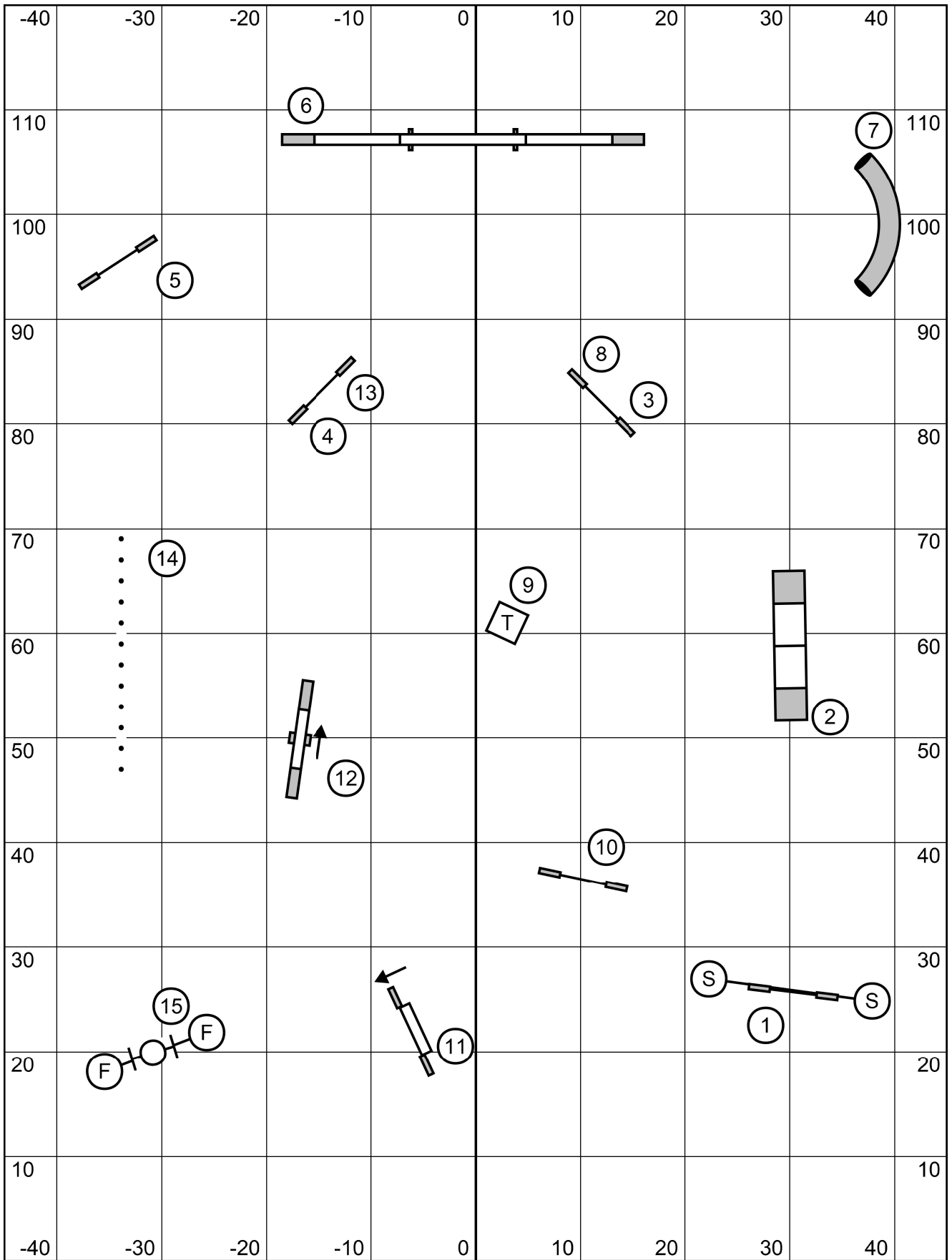


Riverside Canine
 Starters/PI Gamblers
 Sunday, April 10th, 2022
 Lauren Hansen Alers

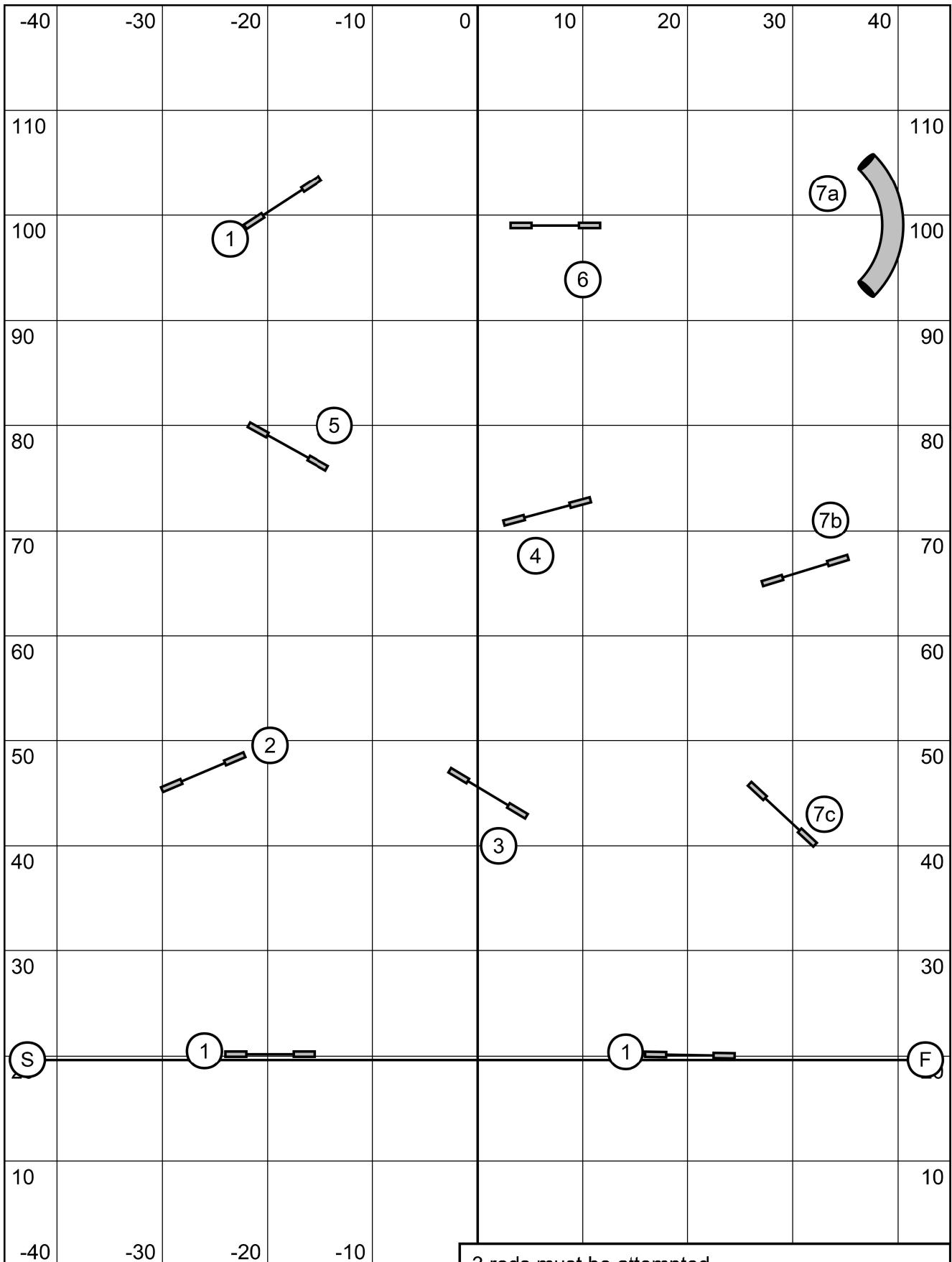
1-2-3-5 system, Aframe is worth 5
 Back to back and contact to contact OK
 25 second opening
 Closing 24/22/20" 15s, 16/14" 16s, 12/10" 17s, +1 for perf.



Riverside Canine
 Advanced/PII Standard
 Sunday, April 10th, 2022
 Lauren Hansen Alers

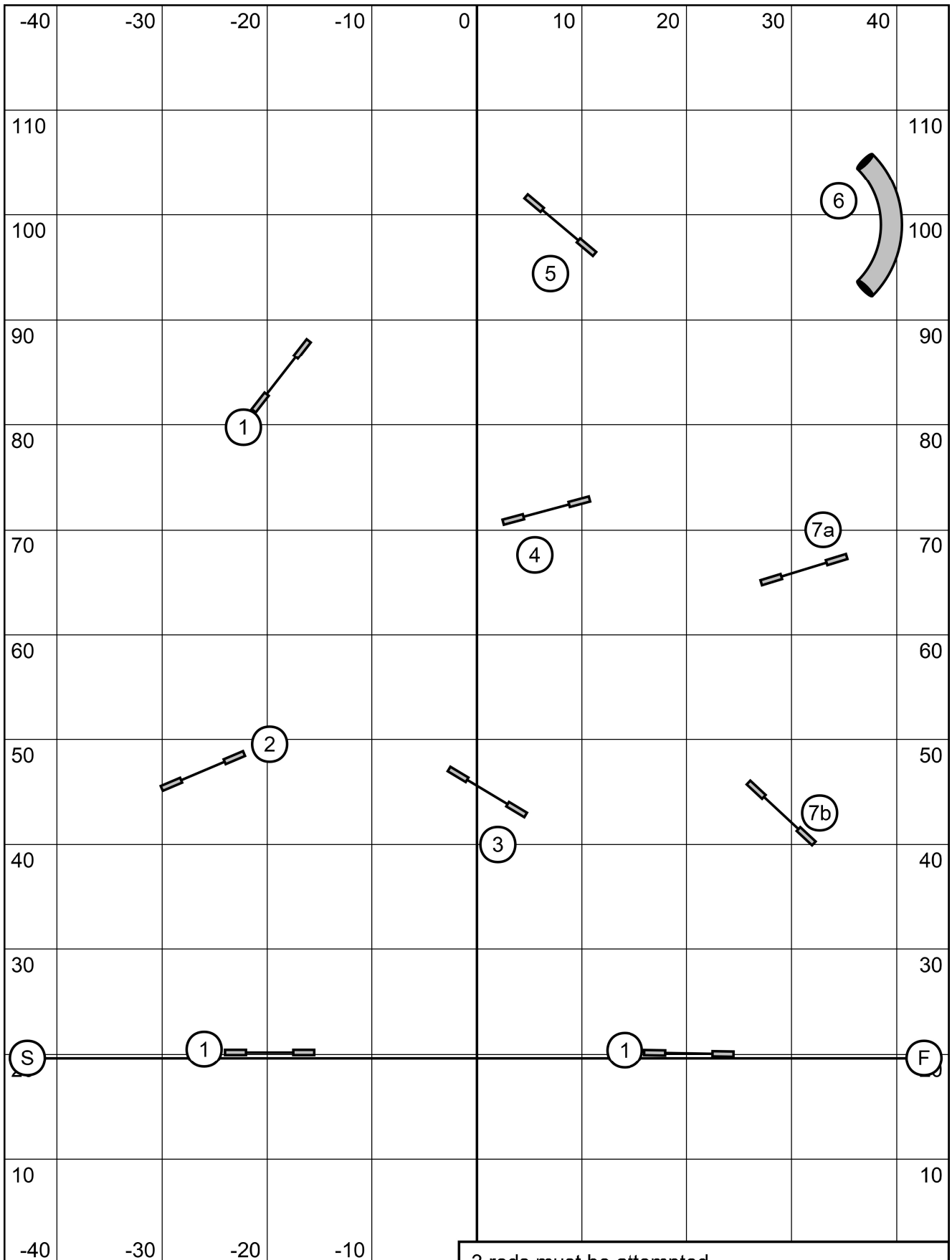


Riverside Canine
 Starters/PI Standard
 Sunday, April 10th, 2022
 Lauren Hansen Alers



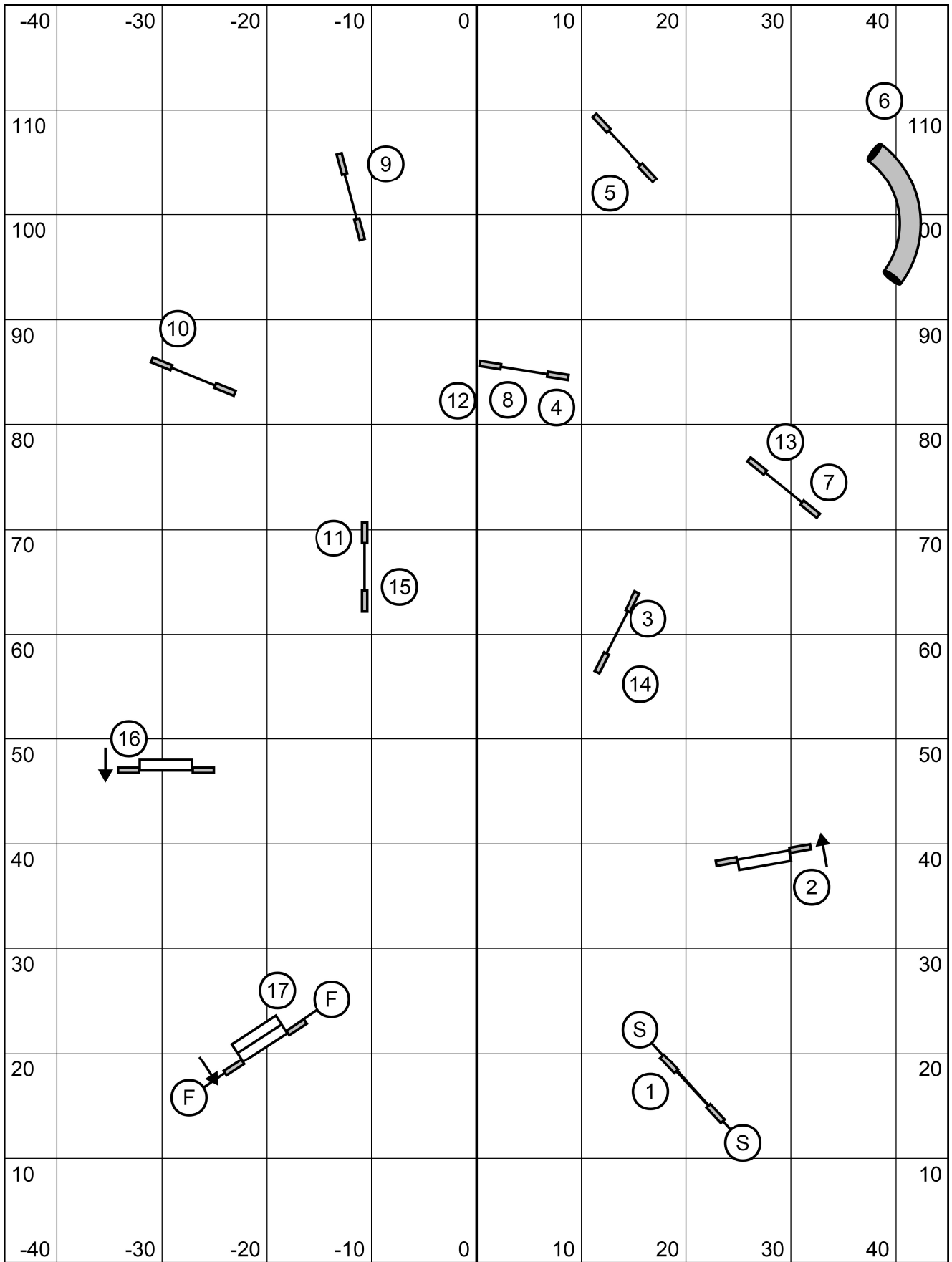
Riverside Canine
 Advanced/PII Snooker
 Sunday, April 10th, 2022
 Lauren Hansen Alers

3 reds must be attempted.
 All obstacles/combo are bi directional in opening.
 Fix off course within combo for zero points.
 #2 bi directional in closing, all else as numbered.
 24/22/20" 50s, 16/14" 52s, 12/10" 54s, +2 for perf.

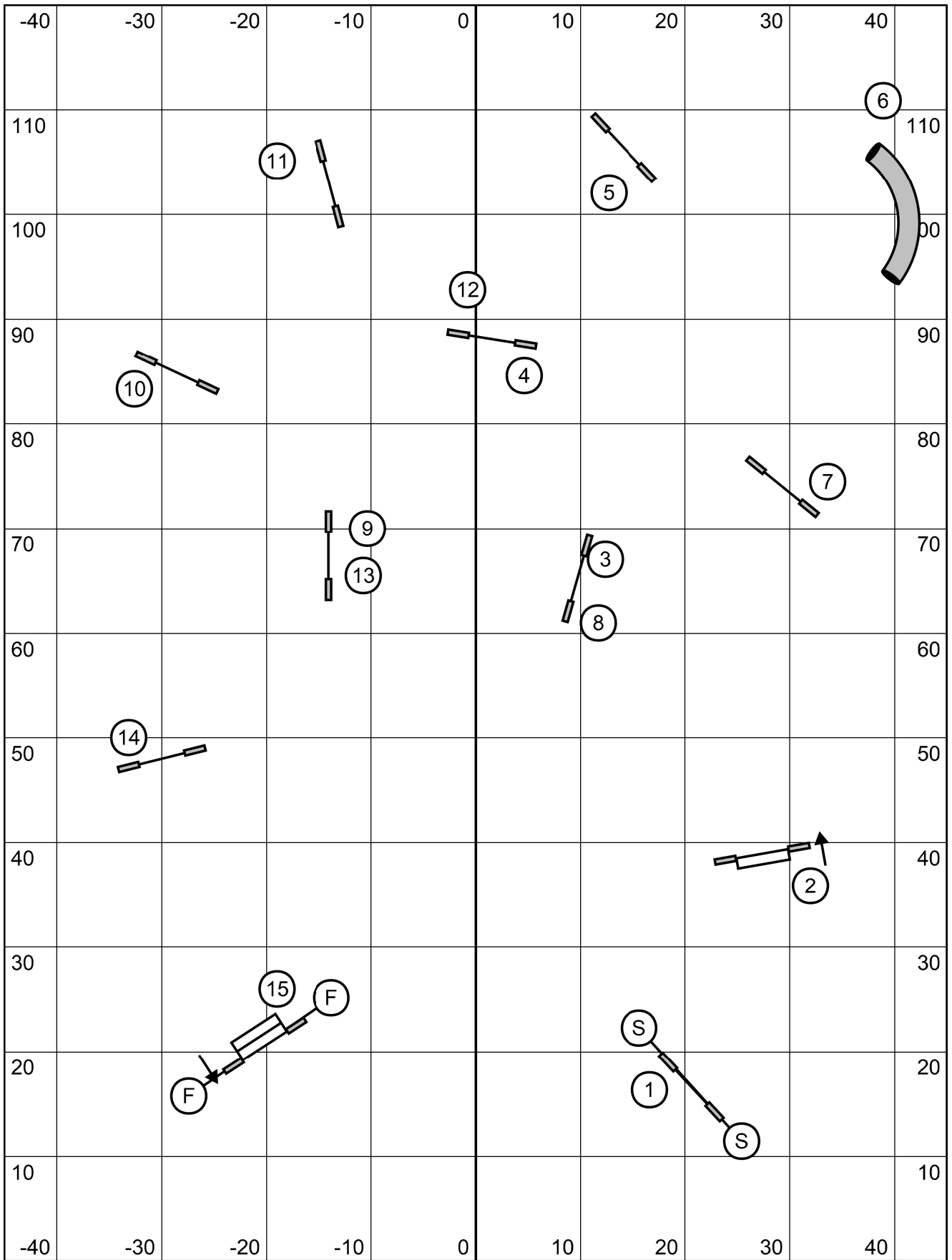


Riverside Canine
 Starters/PI Snooker
 Sunday, April 10th, 2022
 Lauren Hansen Alers

3 reds must be attempted.
 All obstacles/combo are bi directional in opening.
 Fix off course within combo for zero points.
 #2 bi directional in closing, all else as numbered.
 24/22/20" 50s, 16/14" 52s, 12/10" 54s, +2 for perf.



Riverside Canine
 Advanced/PII Jumpers
 Sunday, April 10th, 2022
 Lauren Hansen Alers



Riverside Canine
 Starters/PI Jumpers
 Sunday, April 10th, 2022
 Lauren Hansen Alers