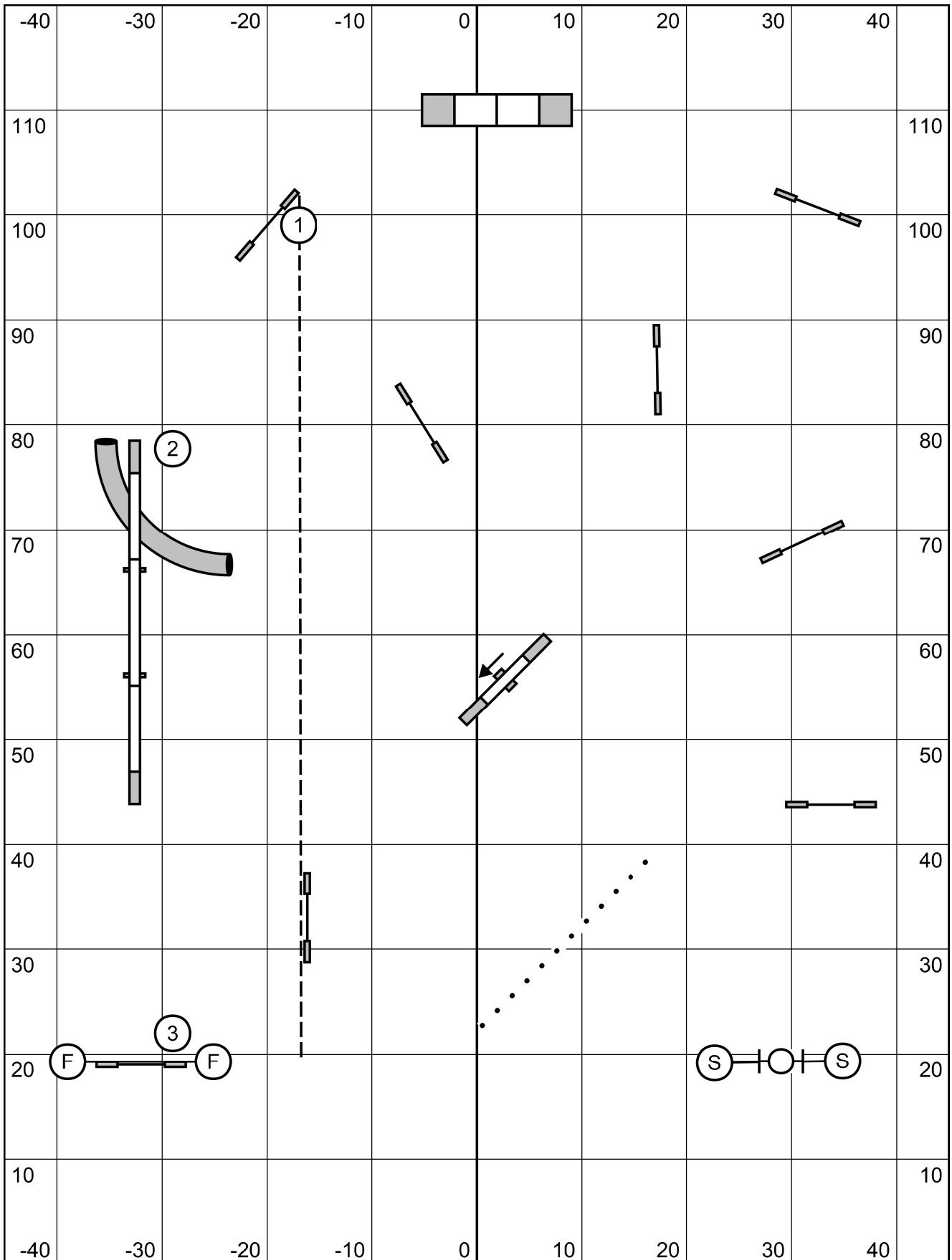


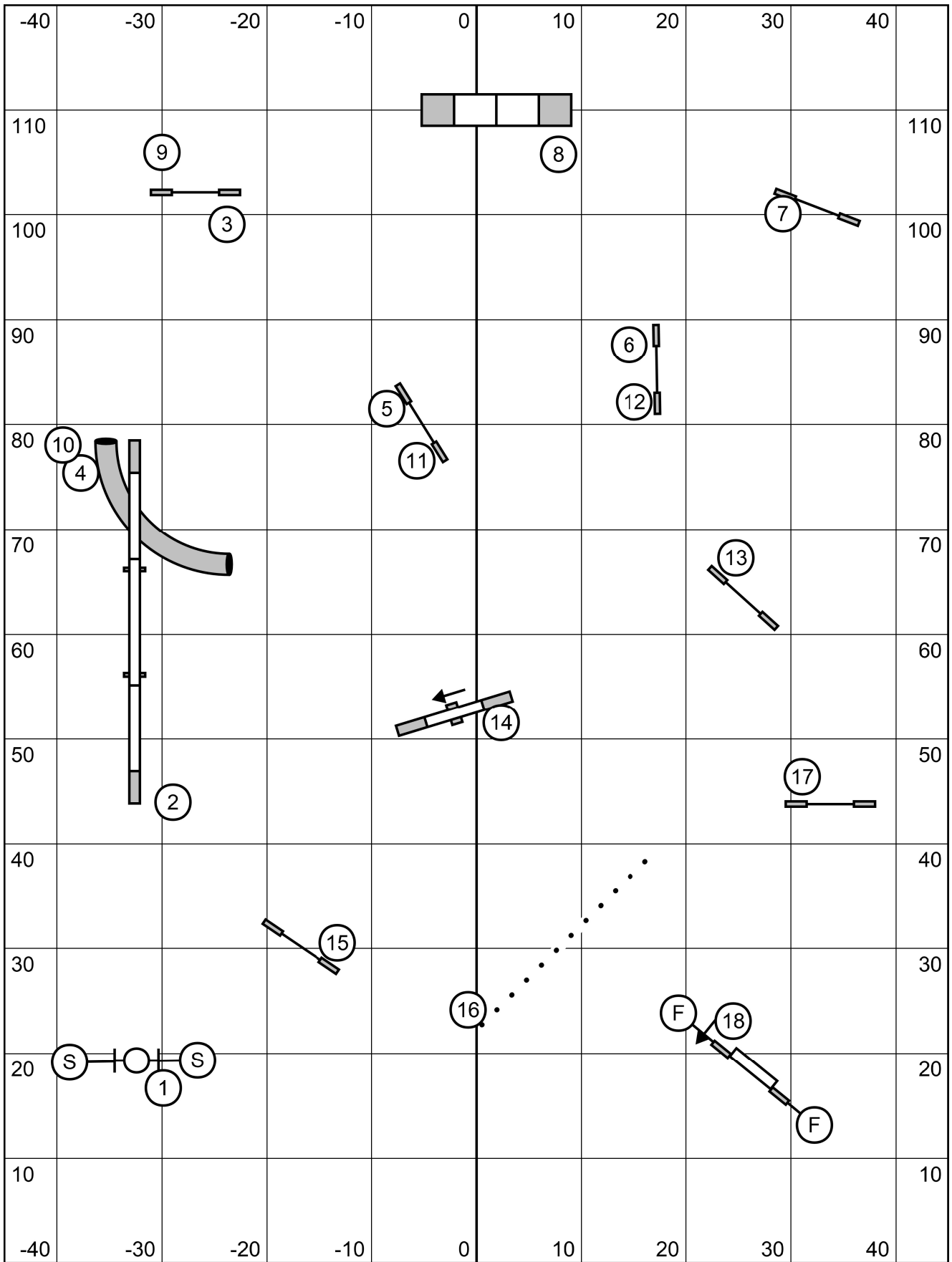
Riverside Canine
 Combined/Perf. Combined Relay
 Friday, April 8th, 2022
 Lauren Hansen Alers

Light circles run first, dark circles second.
 Mixed height pairs may choose sides.
 Second dog may start when first dog completes their half.
 Second handler may lead out while first dog is running.

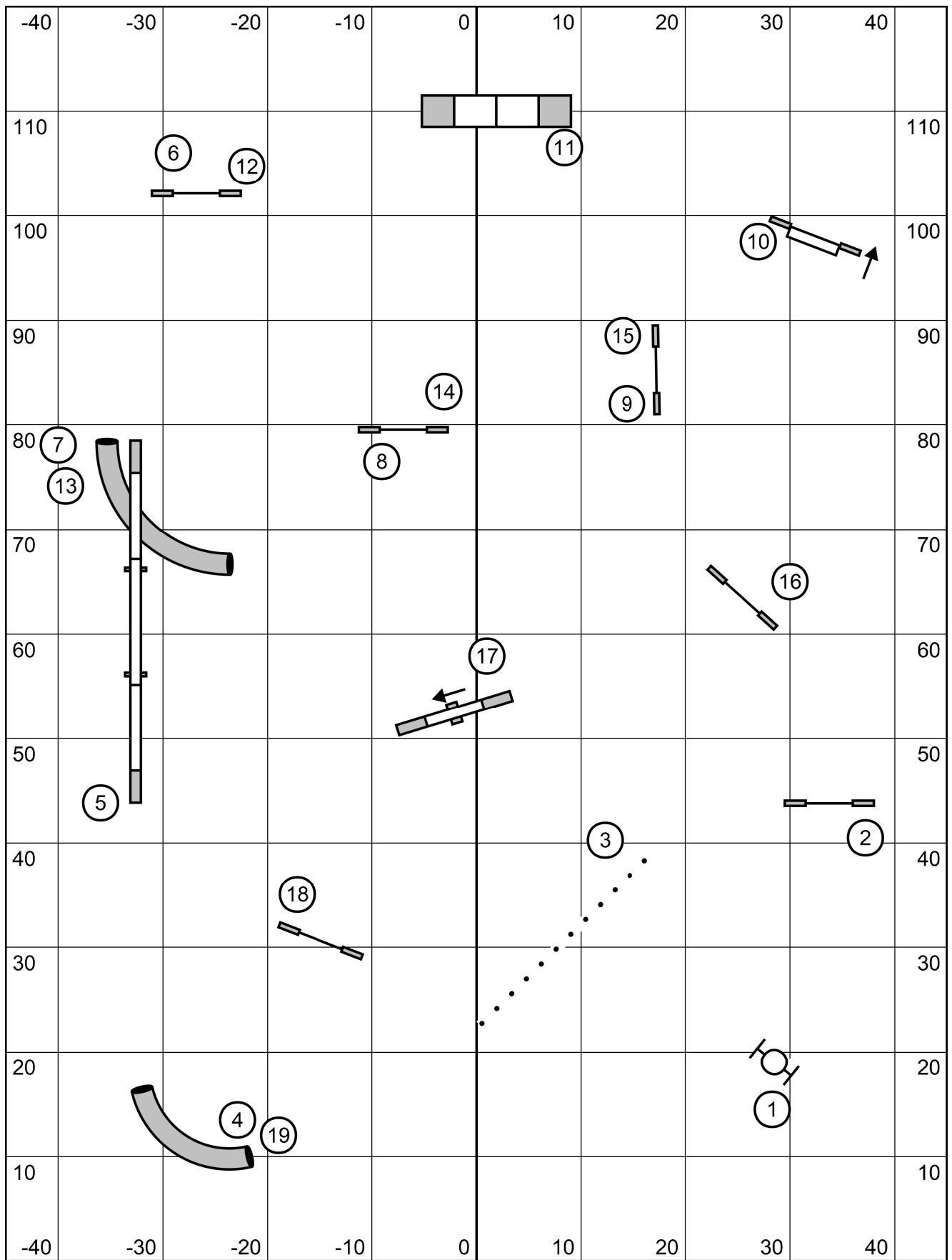


Riverside Canine
 Masters/P/III/Vet Standard
 Friday, April 8th, 2022
 Lauren Hansen Alers

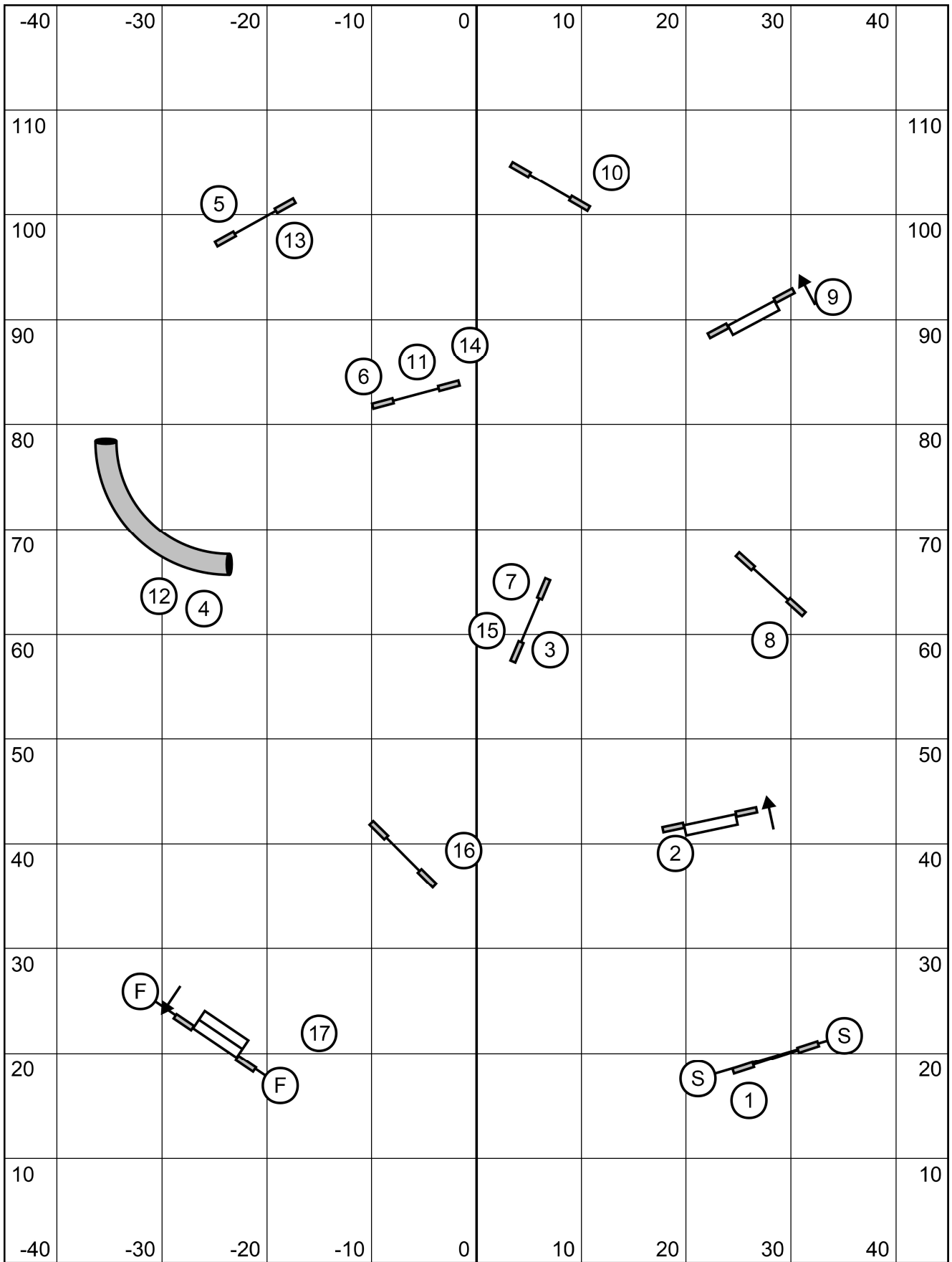
1-3-5-7 system, teeter is worth 7
 Back to back and contact to contact OK
 25 second opening
 Closing: 24/22/20" 15s, 16/14" 16s, 12/10" 17s, +1 for perf, +2 for vets



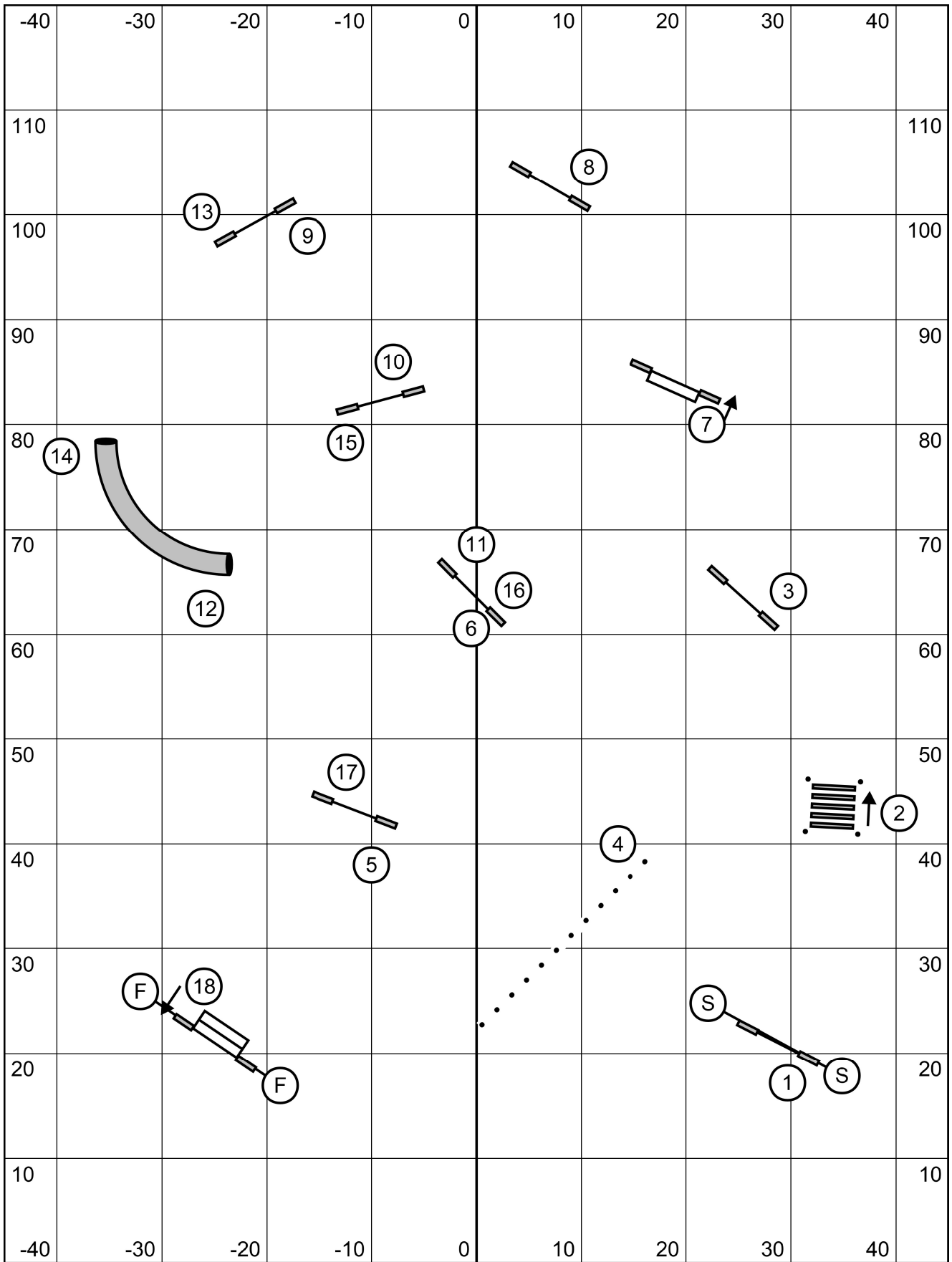
Riverside Canine
Masters/P/III/Vet Standard
Friday, April 8th, 2022
Lauren Hansen Alers



Riverside Canine
 Biathlon/Perf. Biathlon Standard
 Friday, April 8th, 2022
 Lauren Hansen Alers



Riverside Canine
 Masters/P/III/Vet Jumpers
 Friday, April 8th, 2022
 Lauren Hansen Alers



Riverside Canine
 Biathlon/Perf. Biathlon Jumpers
 Friday, April 8th, 2022
 Lauren Hansen Alers