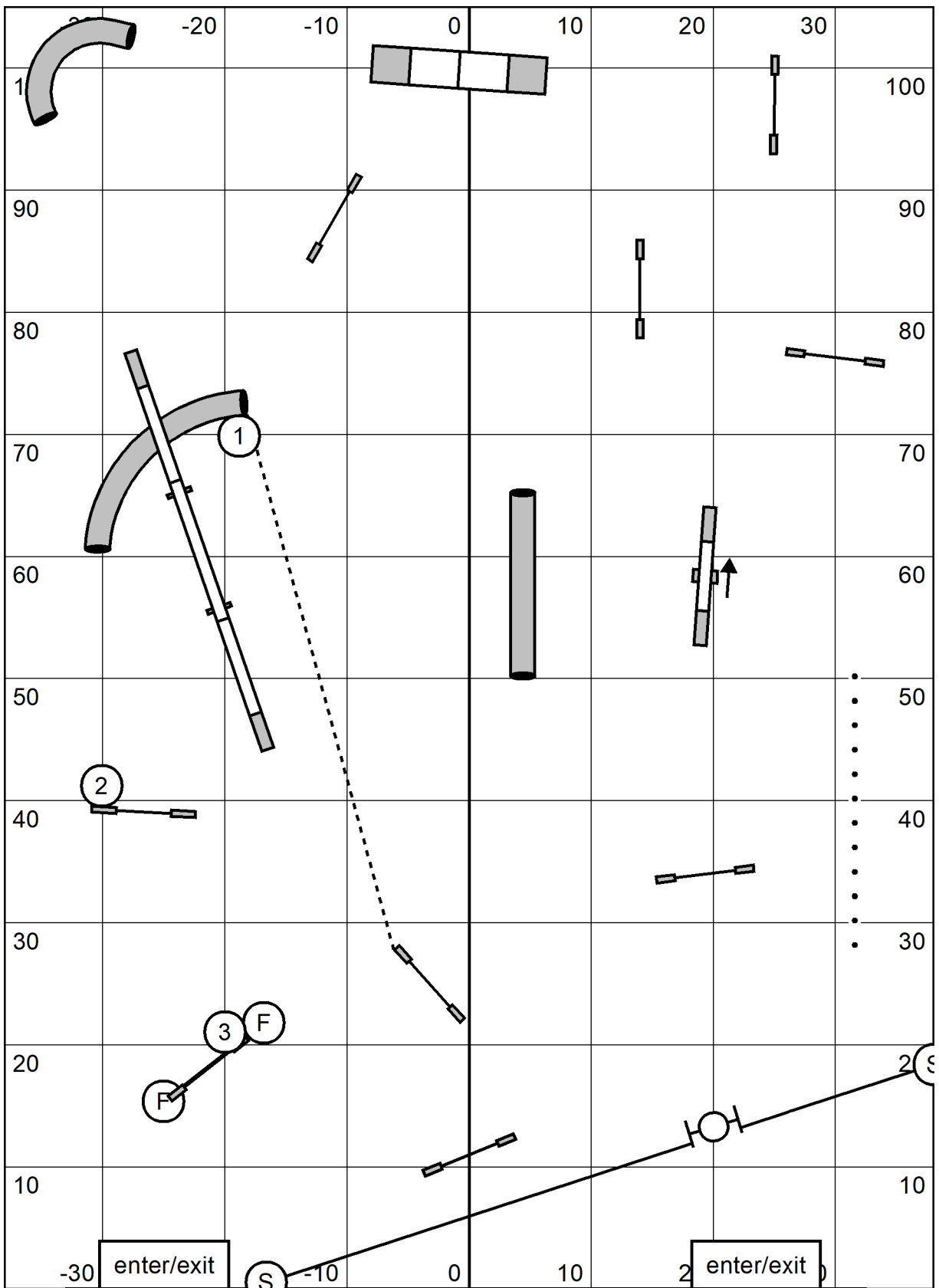
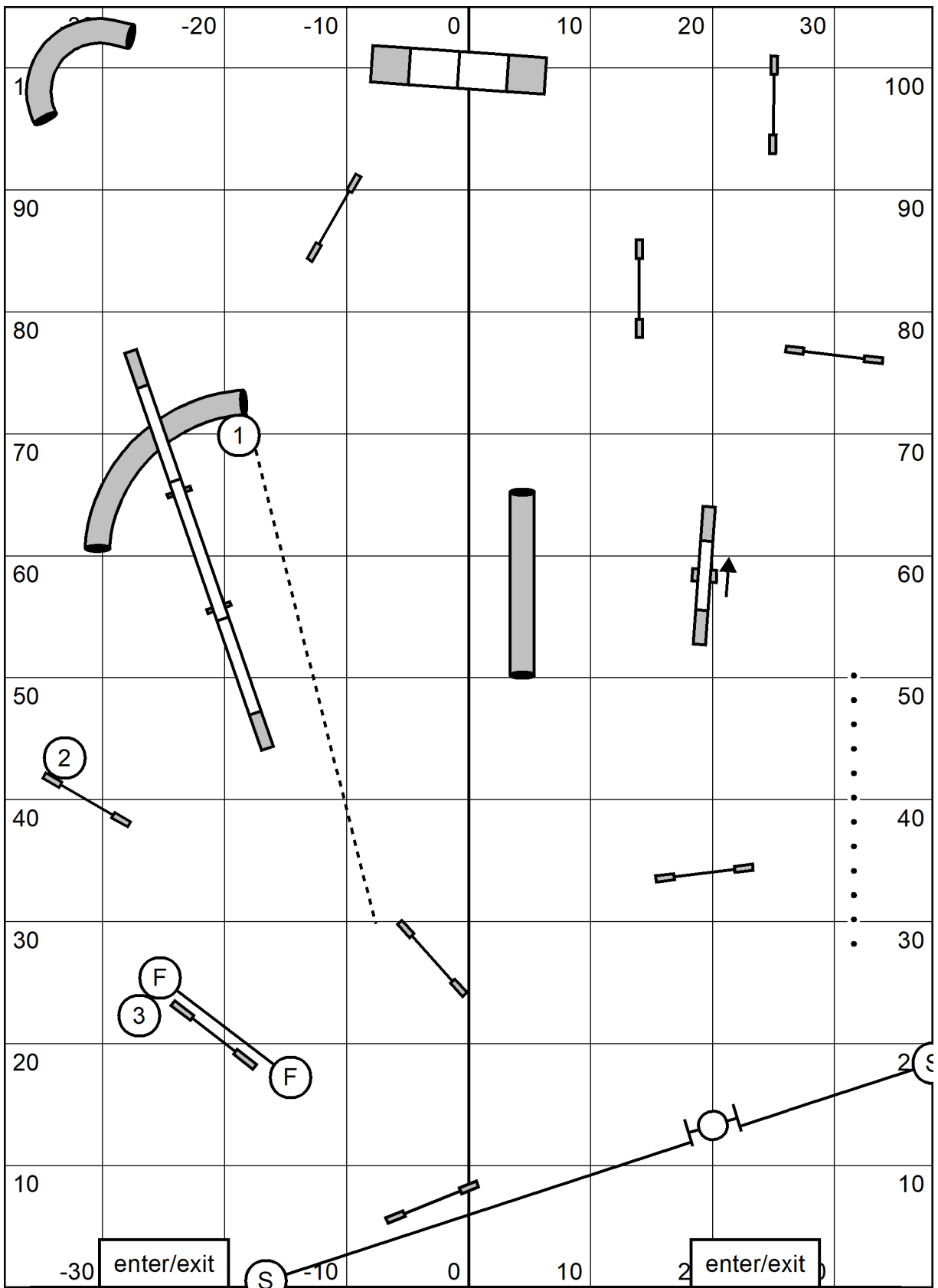


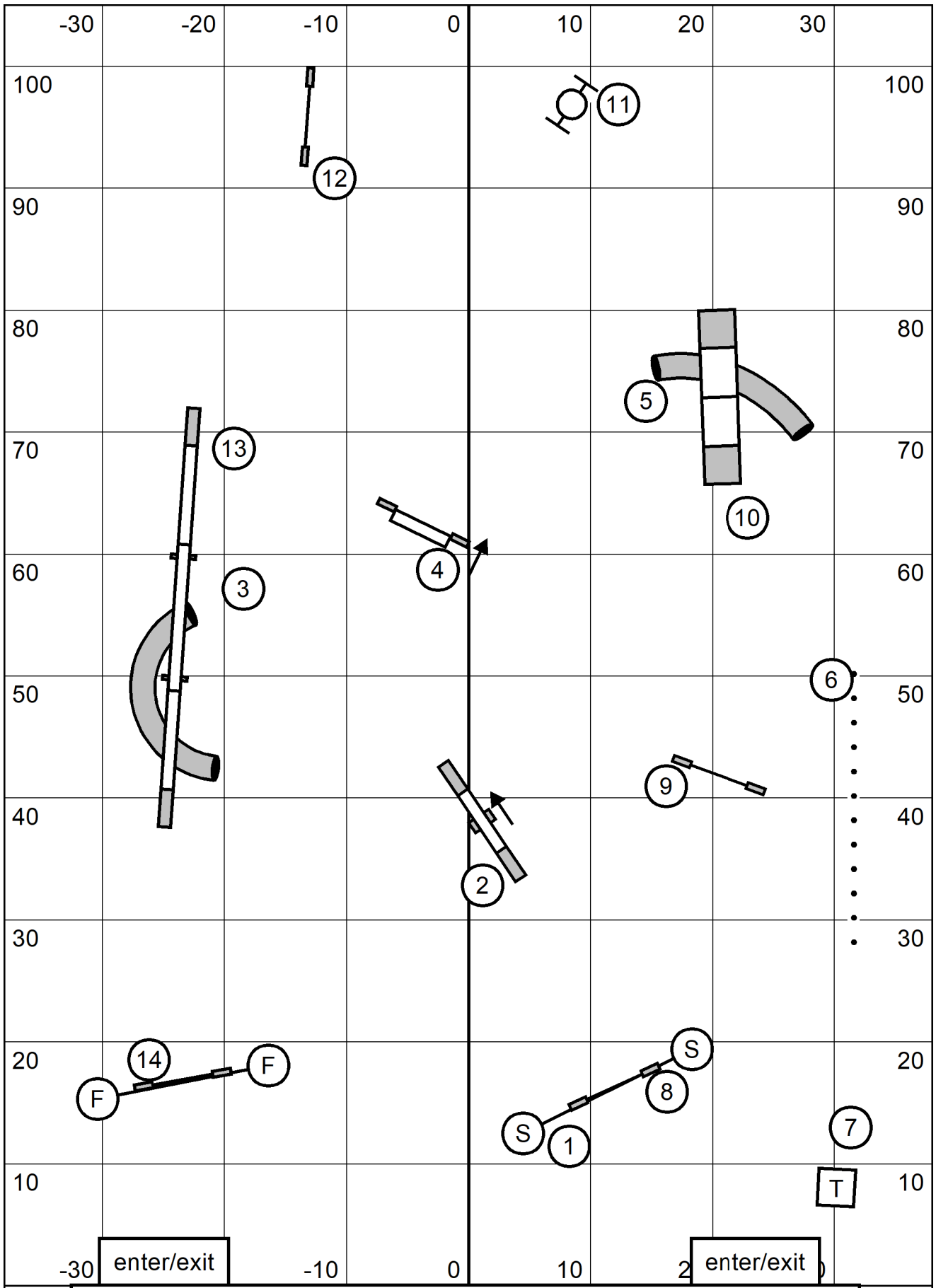
01 Starters/P1 Gamble Sat February 12, 2022 PAWS Brian Ferrand.
 1235 scoring Aframe is 5points. 30 second opening.
 C24/22/20 = 15 seconds P20/16/14 =16 seconds,
 C16/C14 = 16 seconds, P12=17 seconds
 C12/C12 = 17 seconds, P8 = 18 seconds,
 Must perform an obstacle between contacts (same to same is ok).



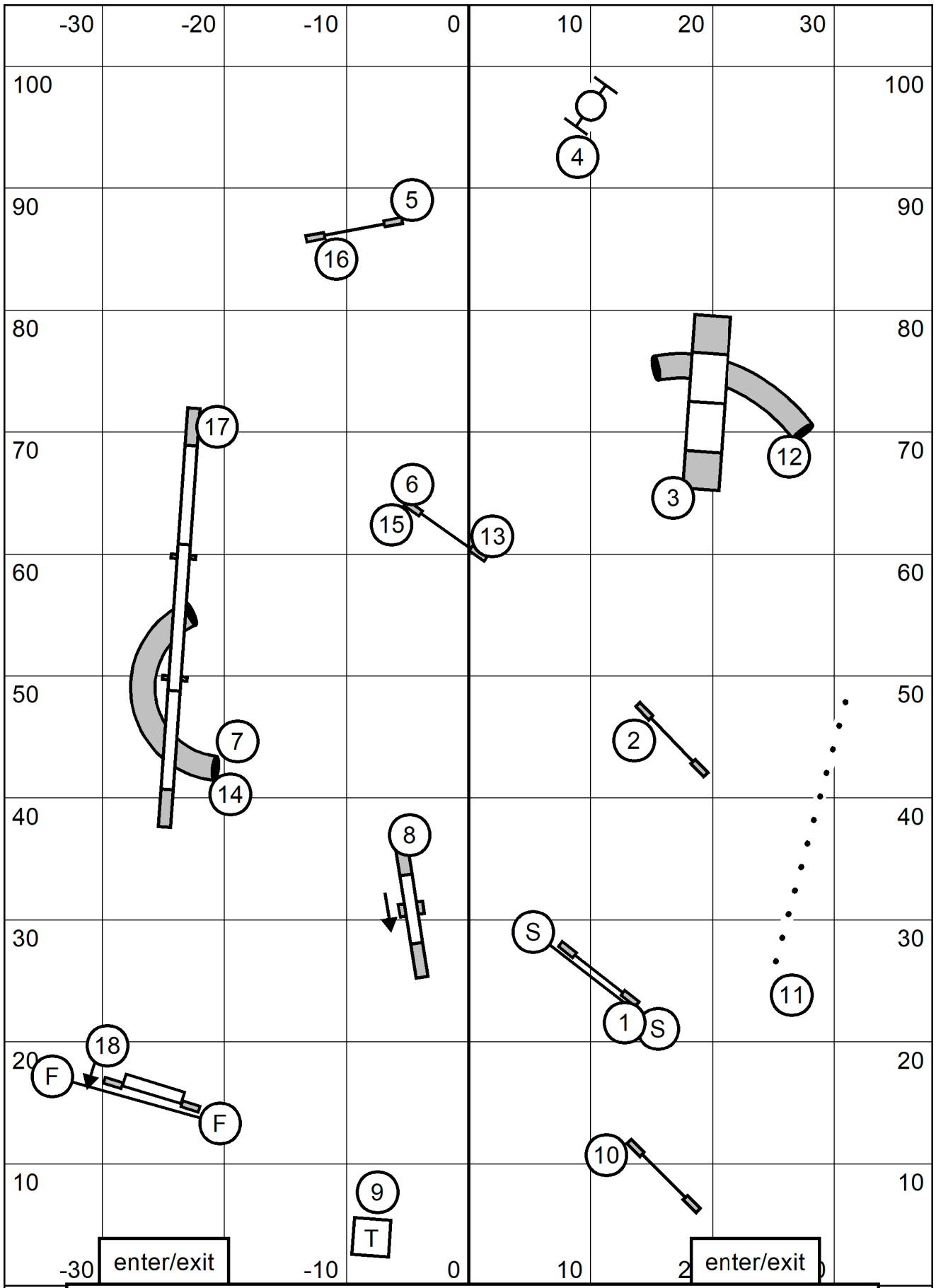
02 Advanced/P2 Gamble Sat February 12, 2022 PAWS Brian Ferrand.
 1235 scoring Aframe is 5points. 30 second opening.
 C24/22/20 = 14 seconds P20/16/14 =15 seconds,
 C16/C14 = 15 seconds, P12=16 seconds
 C12/C12 = 16 seconds, P8 = 17 seconds,
 Must perform an obstacle between contacts (same to same is ok).



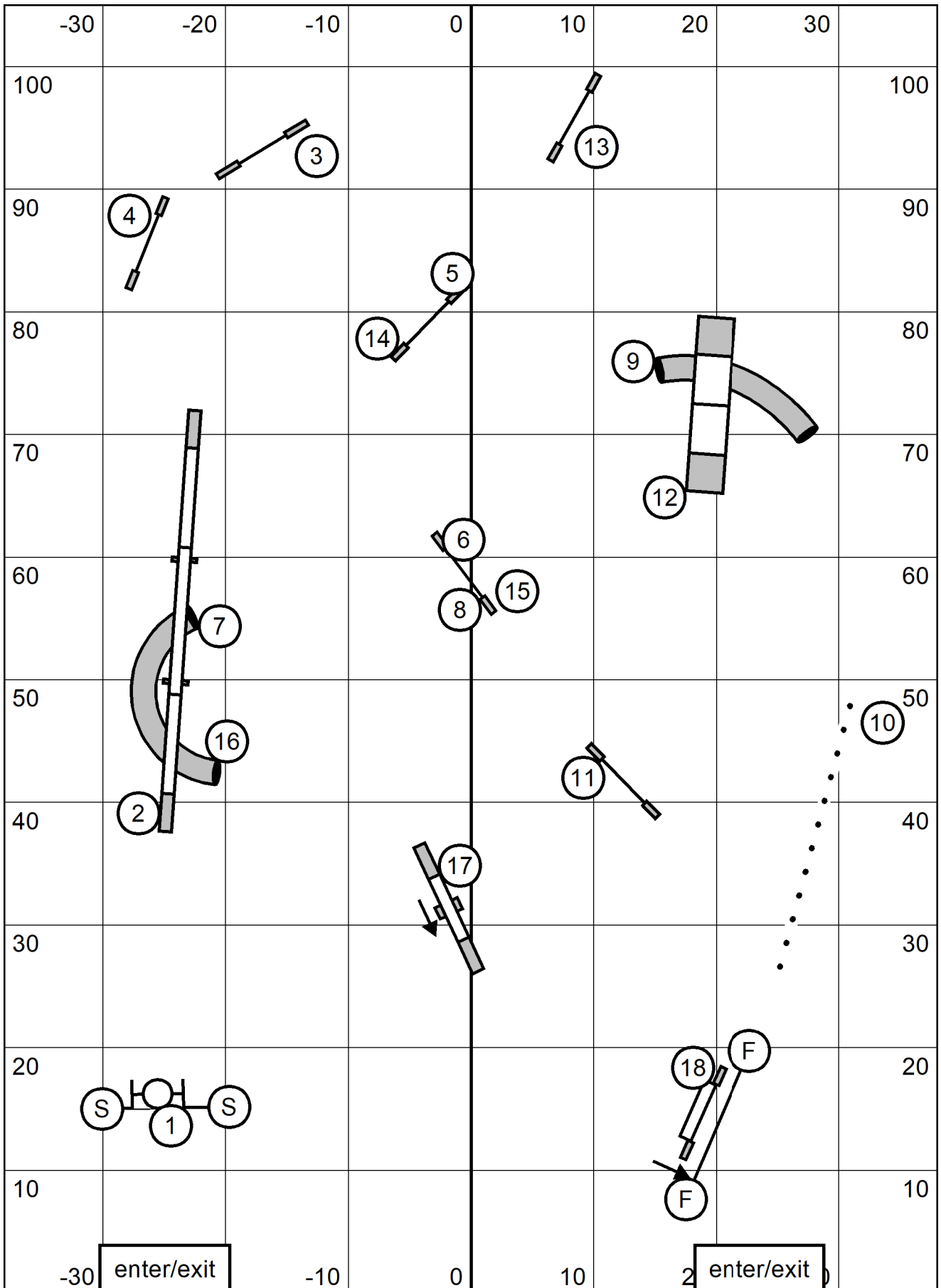
03 Masters/P3/Veteran Gamble Sat February 12, 2022 PAWS Brian Ferrand.
 1235 scoring Aframe is 5points. 30 second opening.
 C24/22/20 = 14 seconds P20/16/14 =15 seconds, V14/12=16 seconds
 C16/C14 = 15 seconds, P12=16 seconds V8=17 seconds
 C12/C12 = 16 seconds, P8 = 17 seconds, V4 =18 seconds.
 Must perform an obstacle between contacts (same to same is ok).



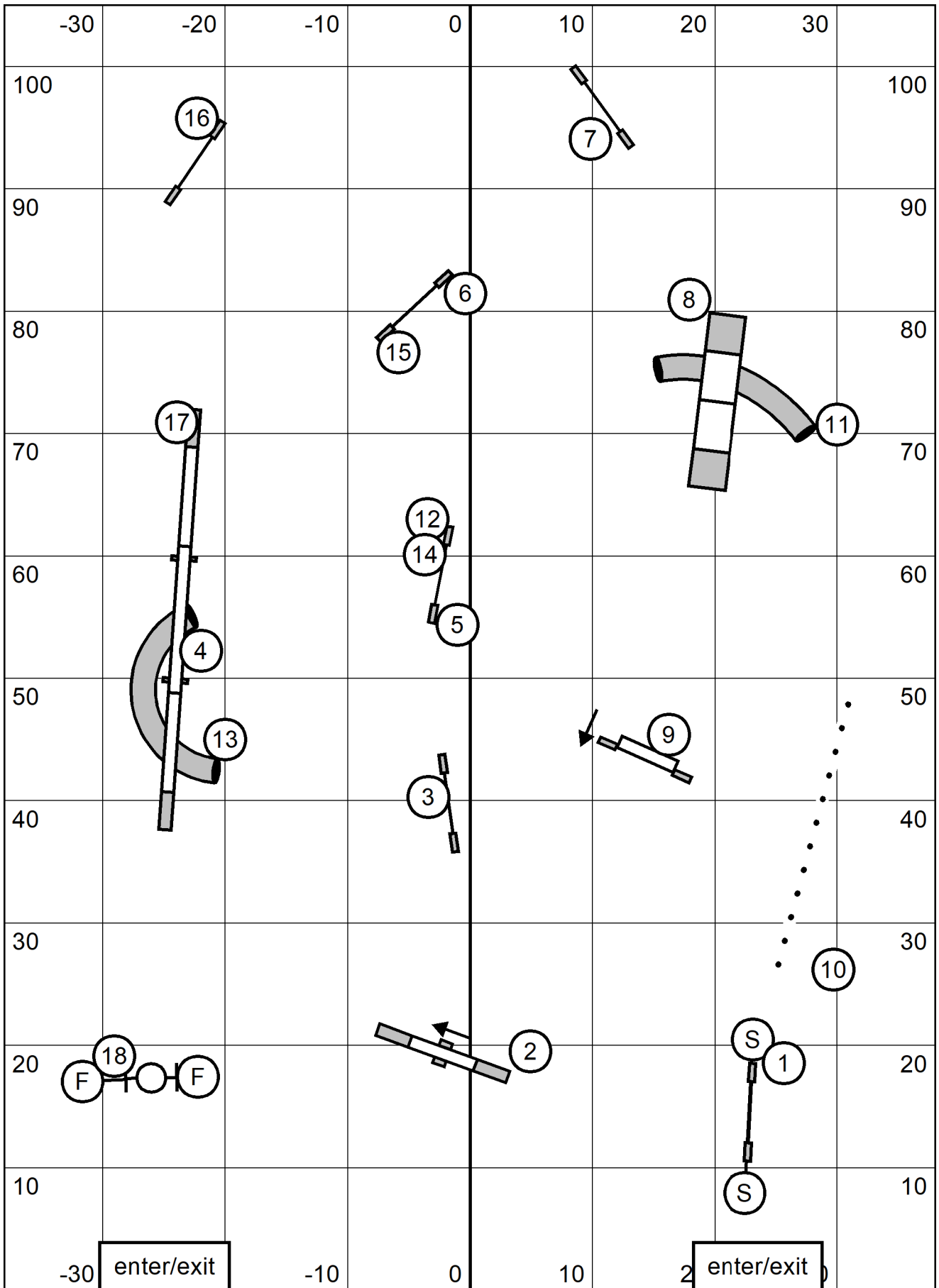
04 Starters/P1 Standard Sat February 12, 2022 PAWS Brian Ferrand.
 Next Dog in the ring at 9



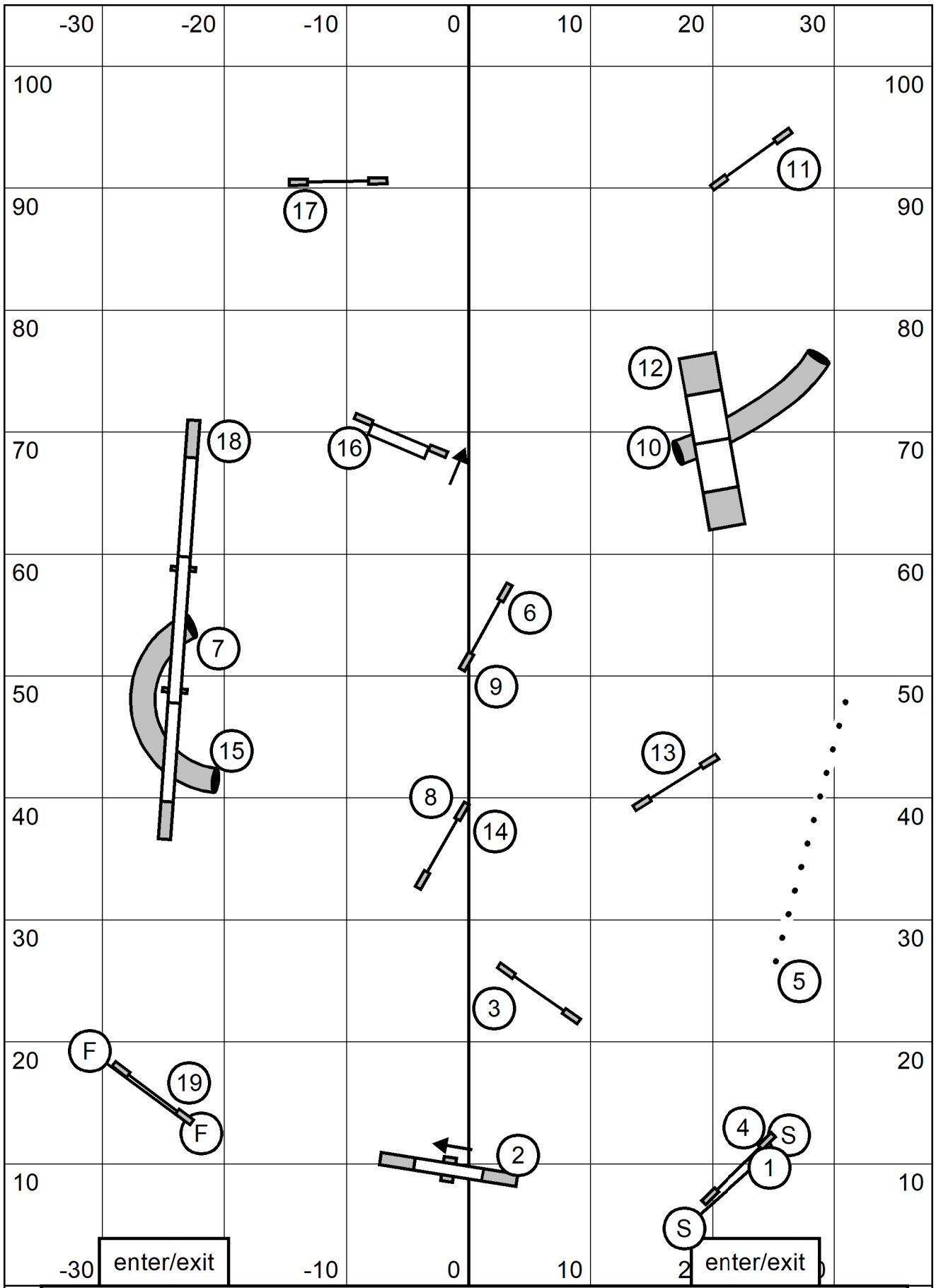
05 Advanced/P2 Standard Sat February 12, 2022 PAWS Brian Ferrand.
 Next Dog in the ring at 15



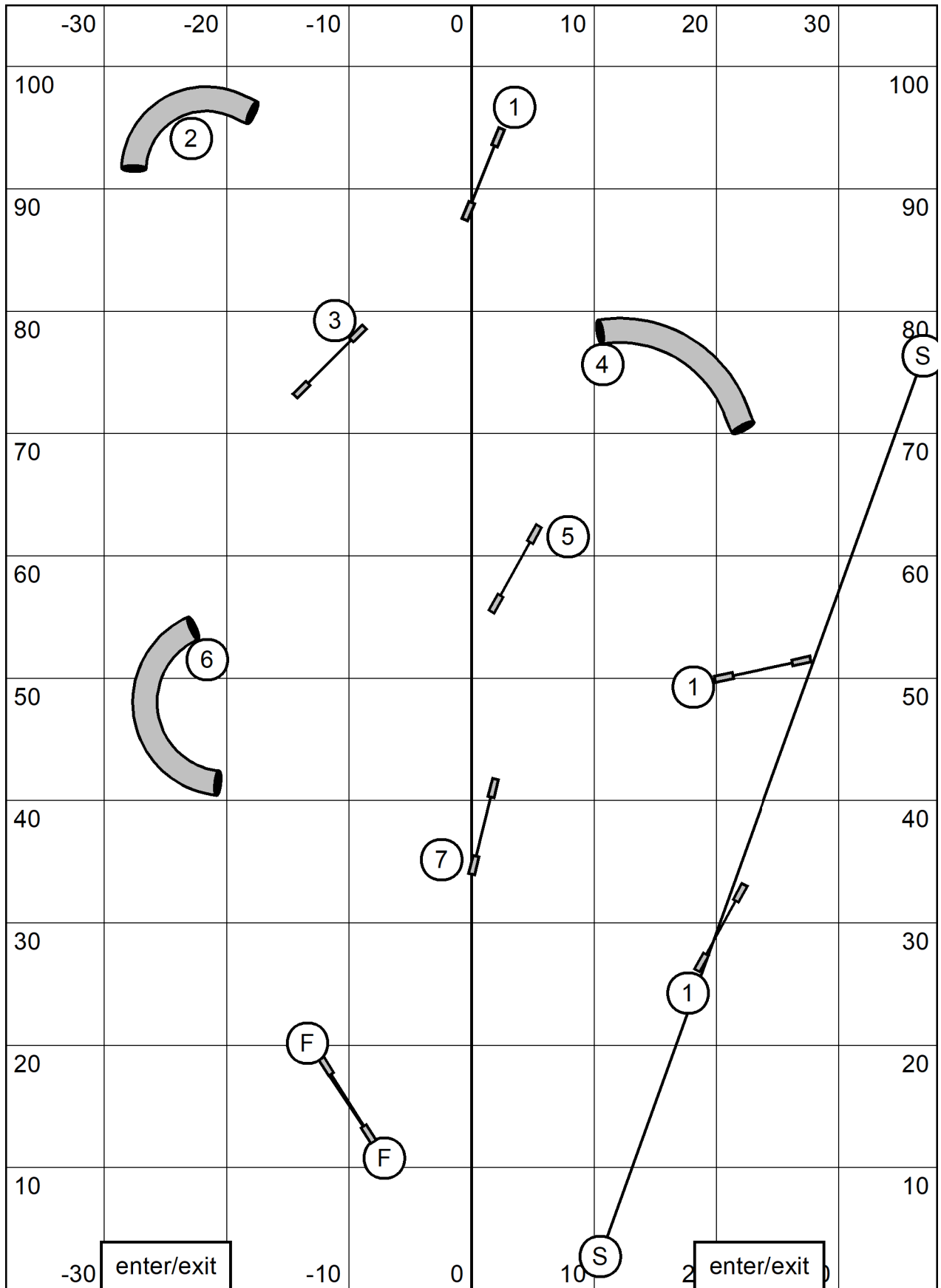
06 Master/P3/Veteran Standard Sat February 12, 2022 PAWS Brian Ferrand.
 Next Dog in the ring at 16



07 Master Challenge Standard/PMC. Sat February 12, 2022 PAWS Brian Ferrand.
 Next Dog in the ring at 14



08 Grand Prix/Perf. Grand Prix. Sat February 12, 2022 PAWS Brian Ferrand.
 Next Dog in the ring at 14

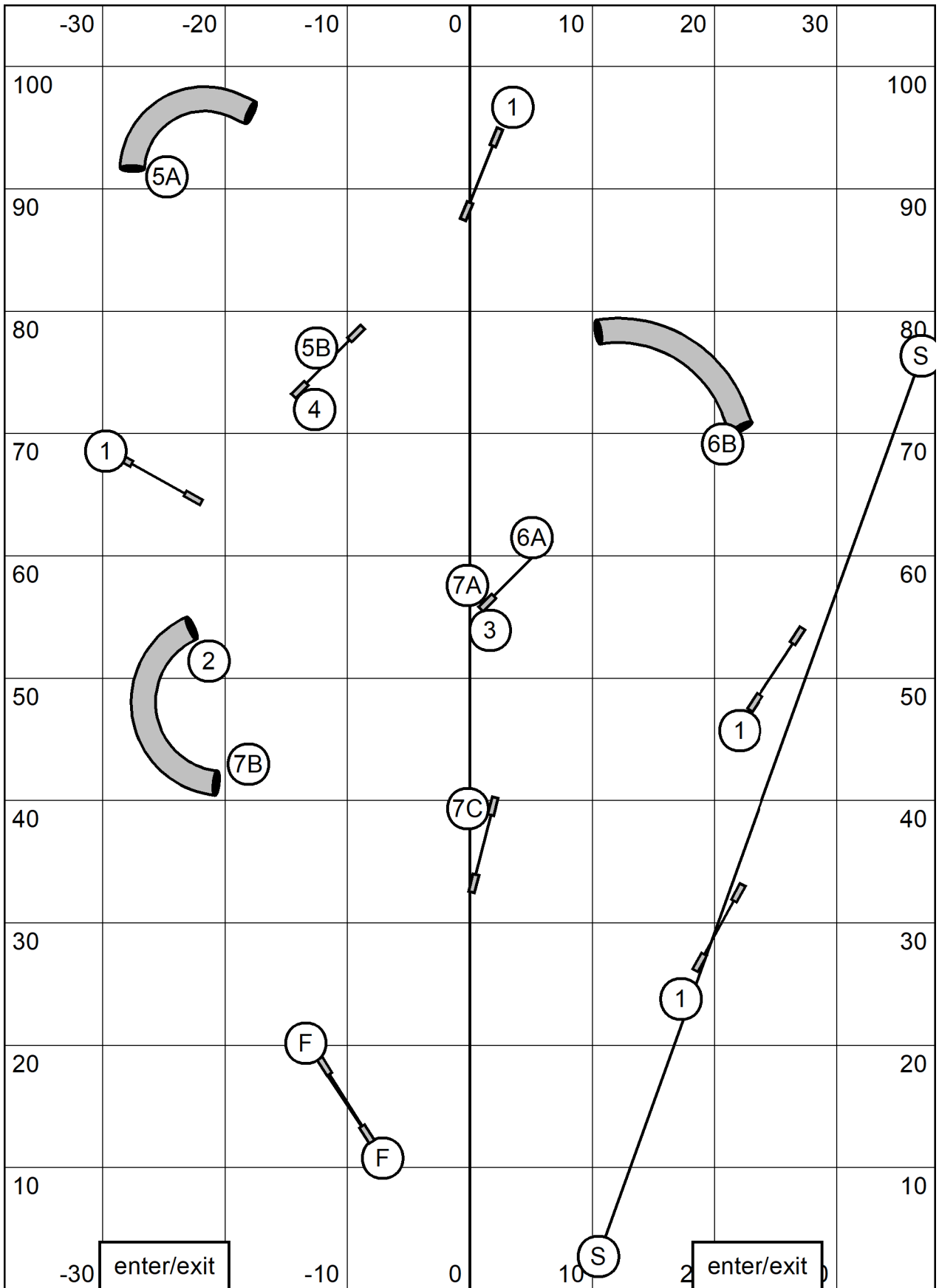


09 Starters/P1 Snooker. Sat February 12, 2022 PAWS Brian Ferrand.

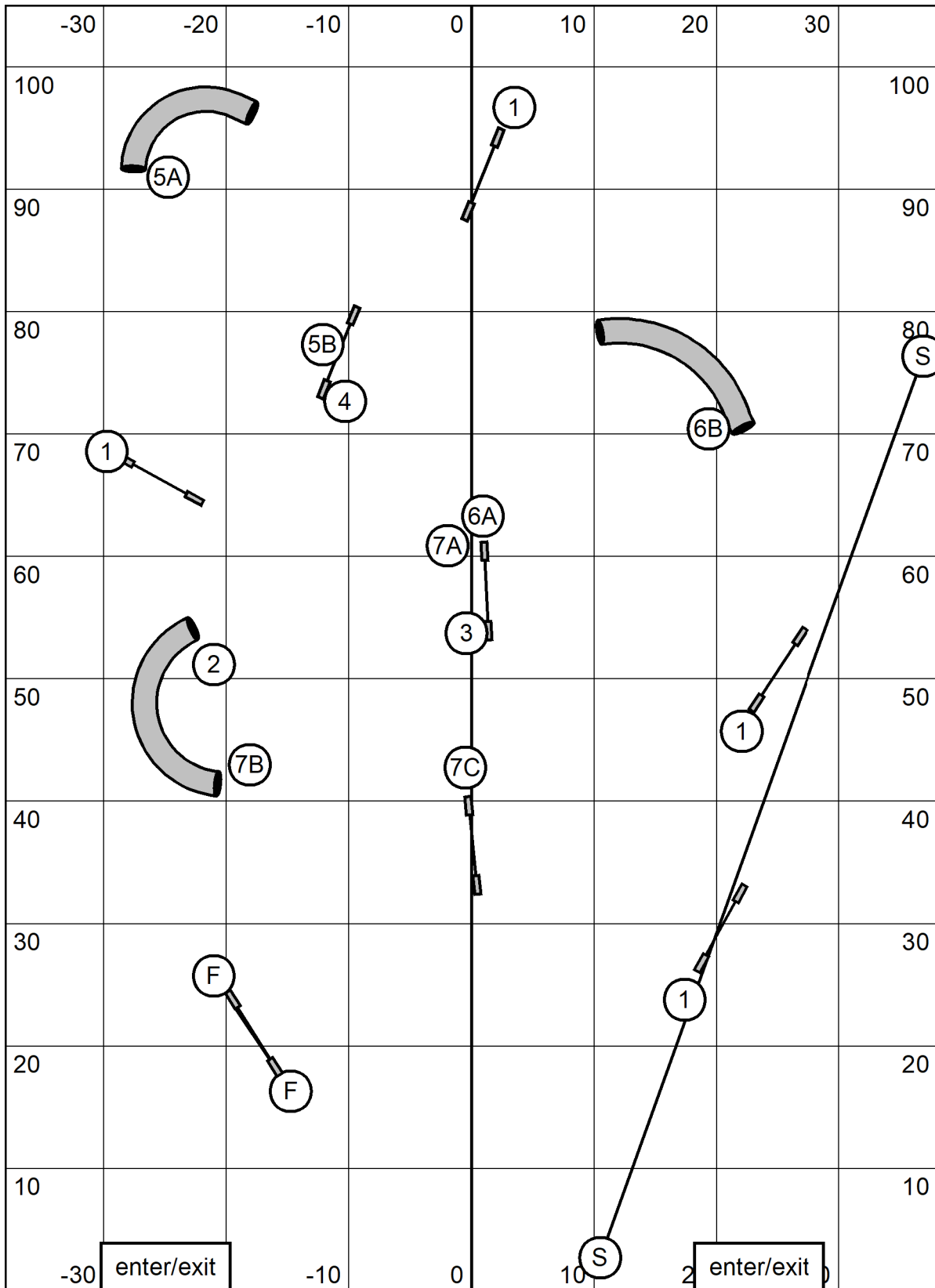
Jumps and Tunnels.

C24/22/20 = 50 seconds; P20/16/14 = 52 seconds

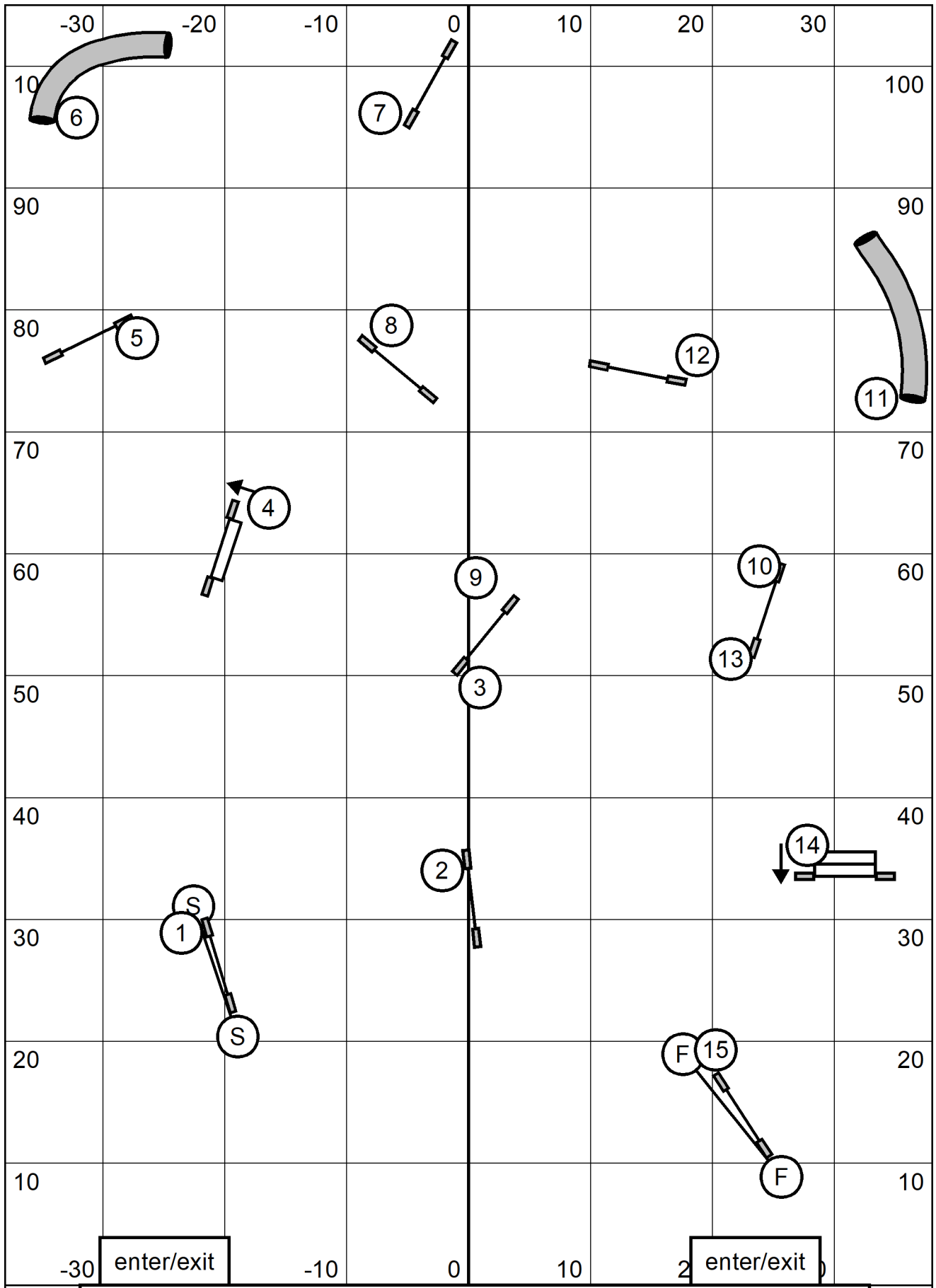
C16/14 = 52 seconds, P14= 54 seconds. C12/C10 = 54 seconds, P8 = 56 seconds



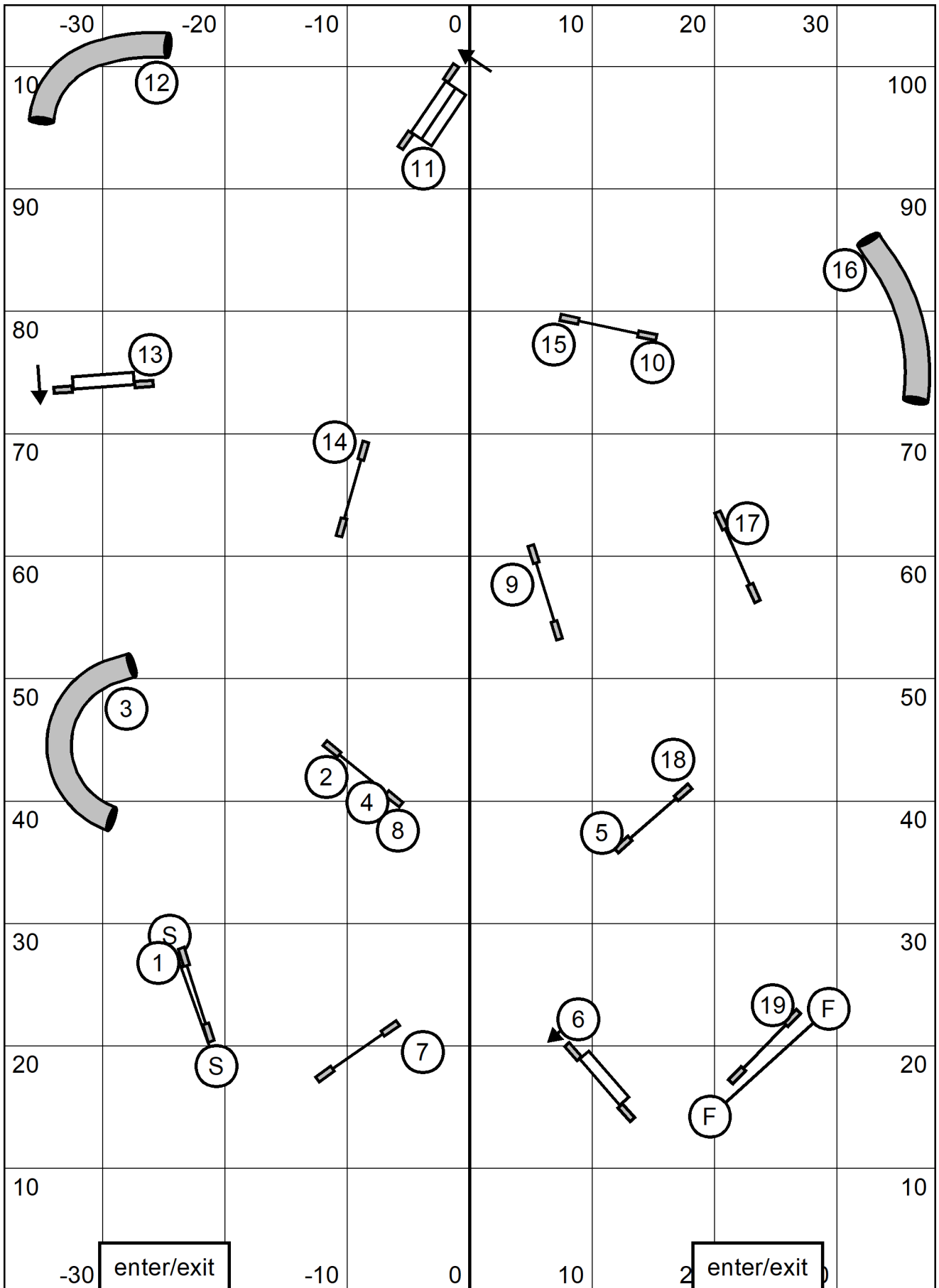
10 Advanced/P2 Snooker. Sat February 12, 2022 PAWS Brian Ferrand.
 Jumps and Tunnels. 3 or 4 reds. If a red is faulted, may attempt 4th, not required.
 C24/22/20 = 50 seconds; P20/16/14 = 52 seconds
 C16/14 = 52 seconds, P14= 54 seconds. C12/C10 = 54 seconds, P8 = 56 seconds



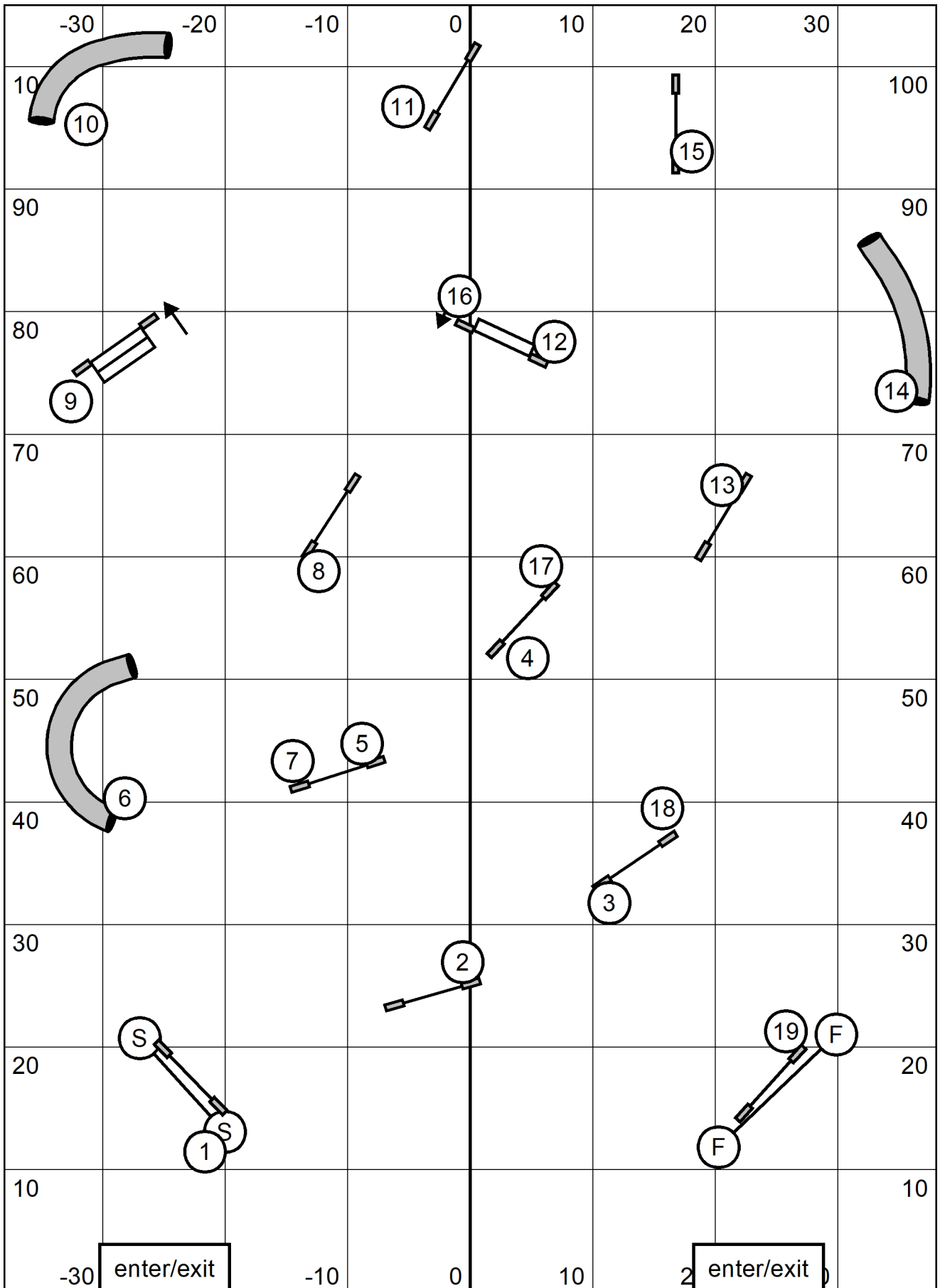
11 Master/P3/Veteran Snooker. Sat February 12, 2022 PAWS Brian Ferrand.
 Jumps and Tunnels. 3 or 4 reds. If a red is faulted, may attempt 4th, (not required).
 Combos any order any flow in opening, as marked in closing. (6A,7C bidirectional in closing).
 Faulted combos must be completed for zero points to continue in opening.
 C24/22/20 = 50 seconds; P20/16/14 = 52 seconds, V14/12 = 54 seconds
 C16/14 = 52 seconds, P14= 54 seconds. V8 = 56 seconds
 C12/C10 = 54 seconds, P8 = 56 seconds, V4 = 58 seconds



12 Starters/P1 Jumpers. Sat February 12, 2022 PAWS Brian Ferrand.
 Next dog on the line at 10



13 Advanced/P2 Jumpers. Sat February 12, 2022 PAWS Brian Ferrand.
 Next dog on the line at 15



14 Master/P3/Veteran Jumpers. Sat February 12, 2022 PAWS Brian Ferrand.
 Next dog on the line at 14