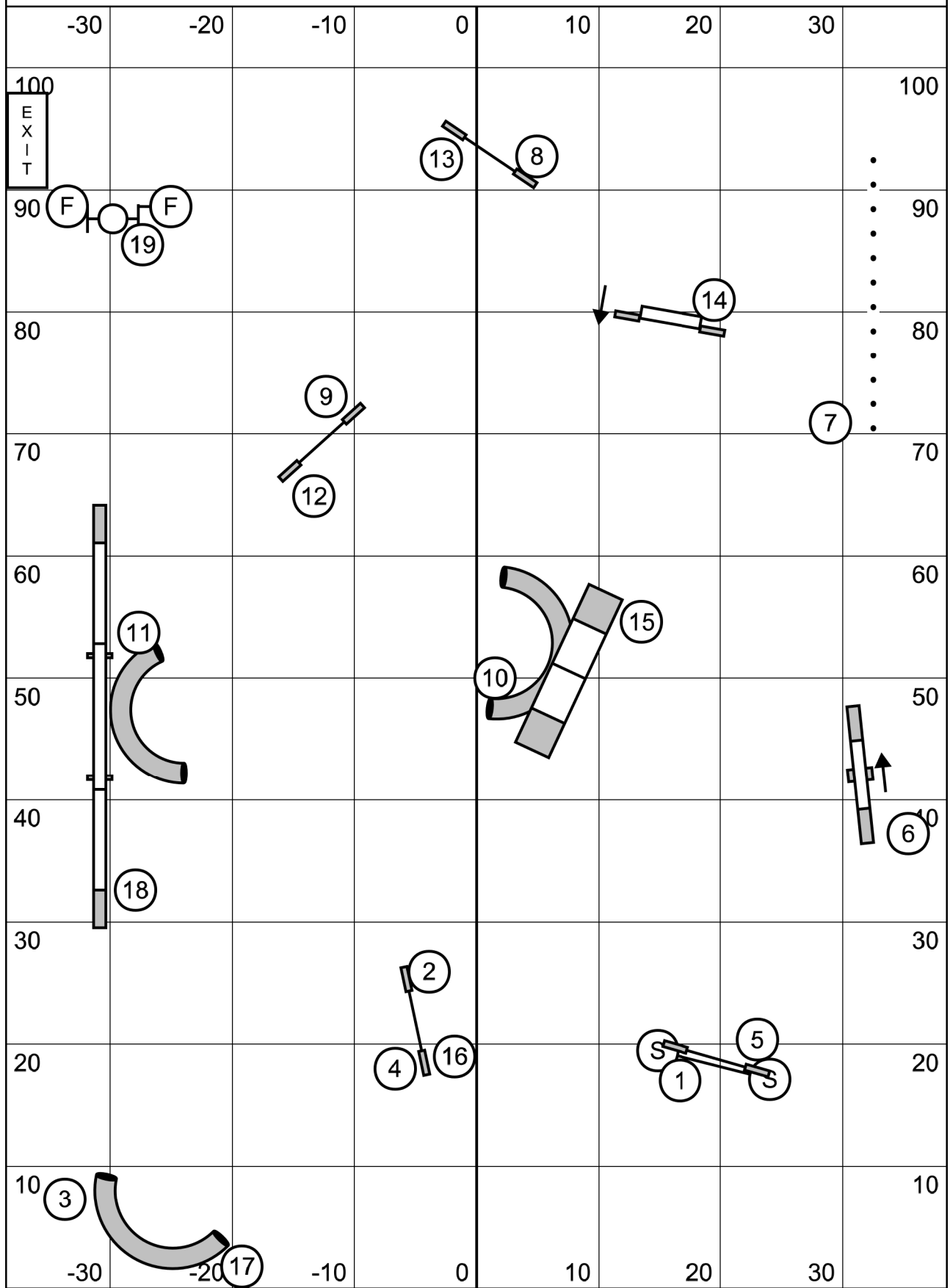
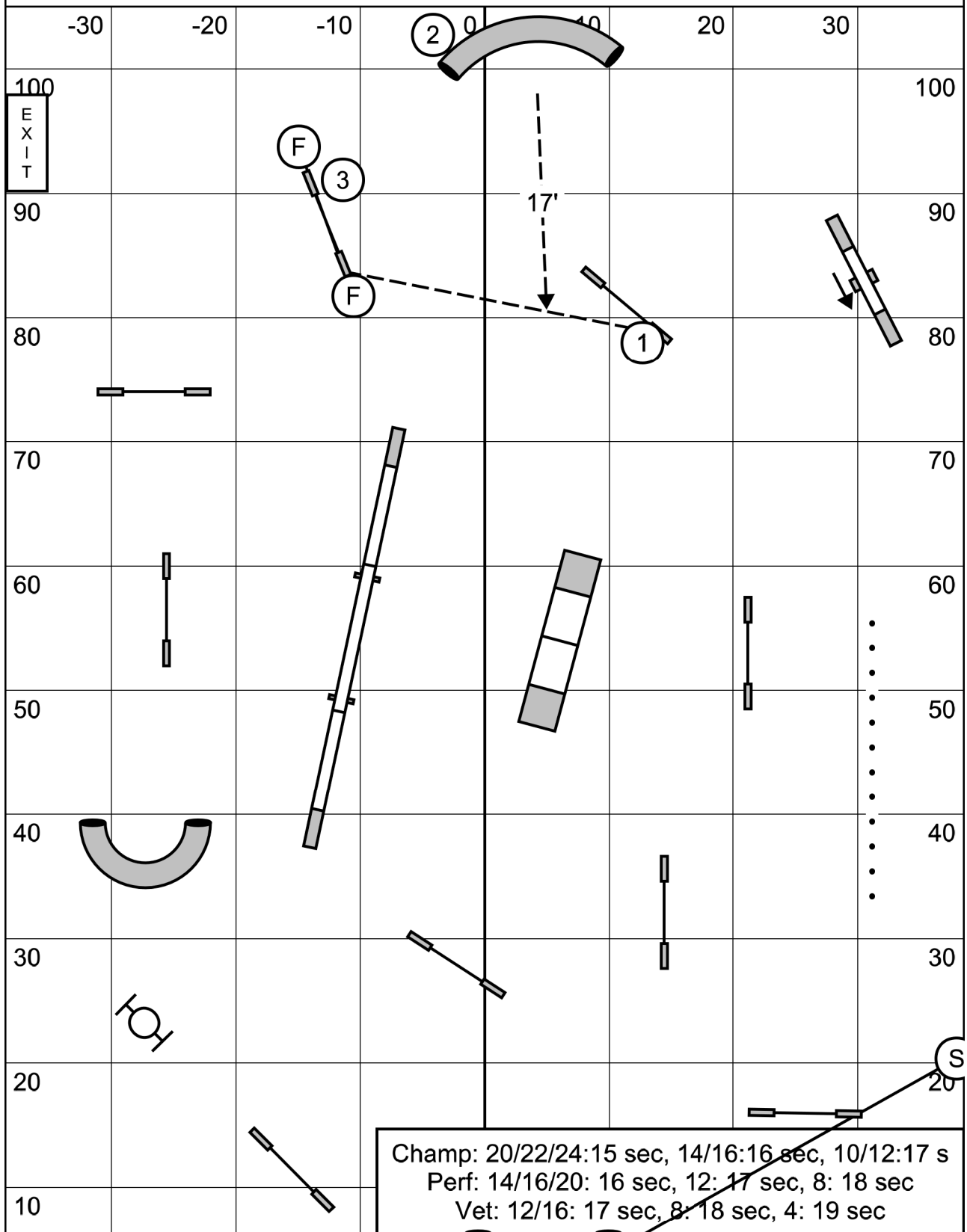


Miscellaneous
 Bark NH! -- December 5, 2021 -- Mike Murphy



Masters / P3 / Vets Gamblers
 Bark NH! -- December 5, 2021 -- Mike Murphy

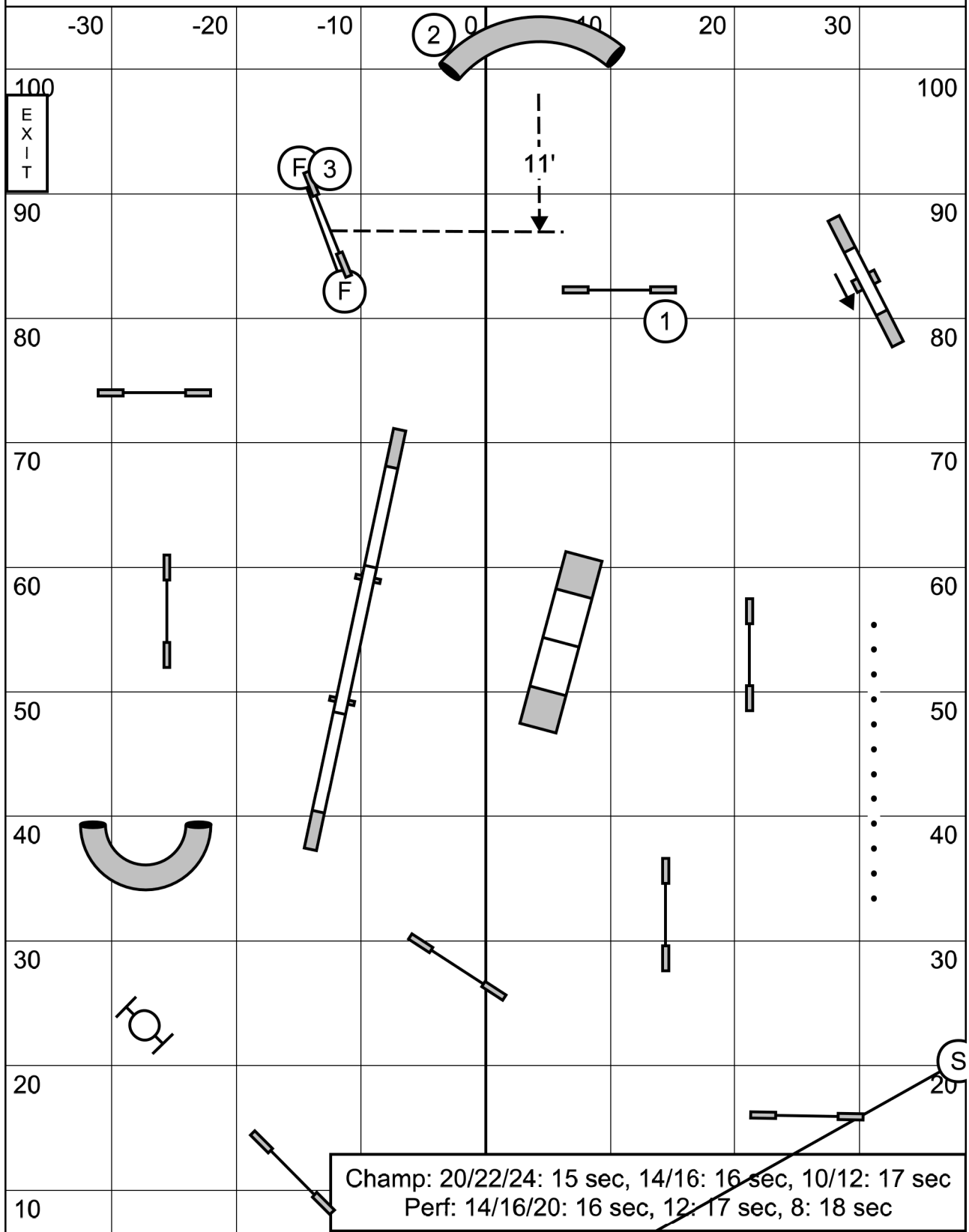


1-2-3-5 System, 5 Pt = A Frame
 25 Sec Open, 13 pt to Q Joker = 20



Back to Back: YES
 Consecutive Contacts: NO

Advanced / P2 Gamblers
 Bark NH! -- December 5, 2021 -- Mike Murphy

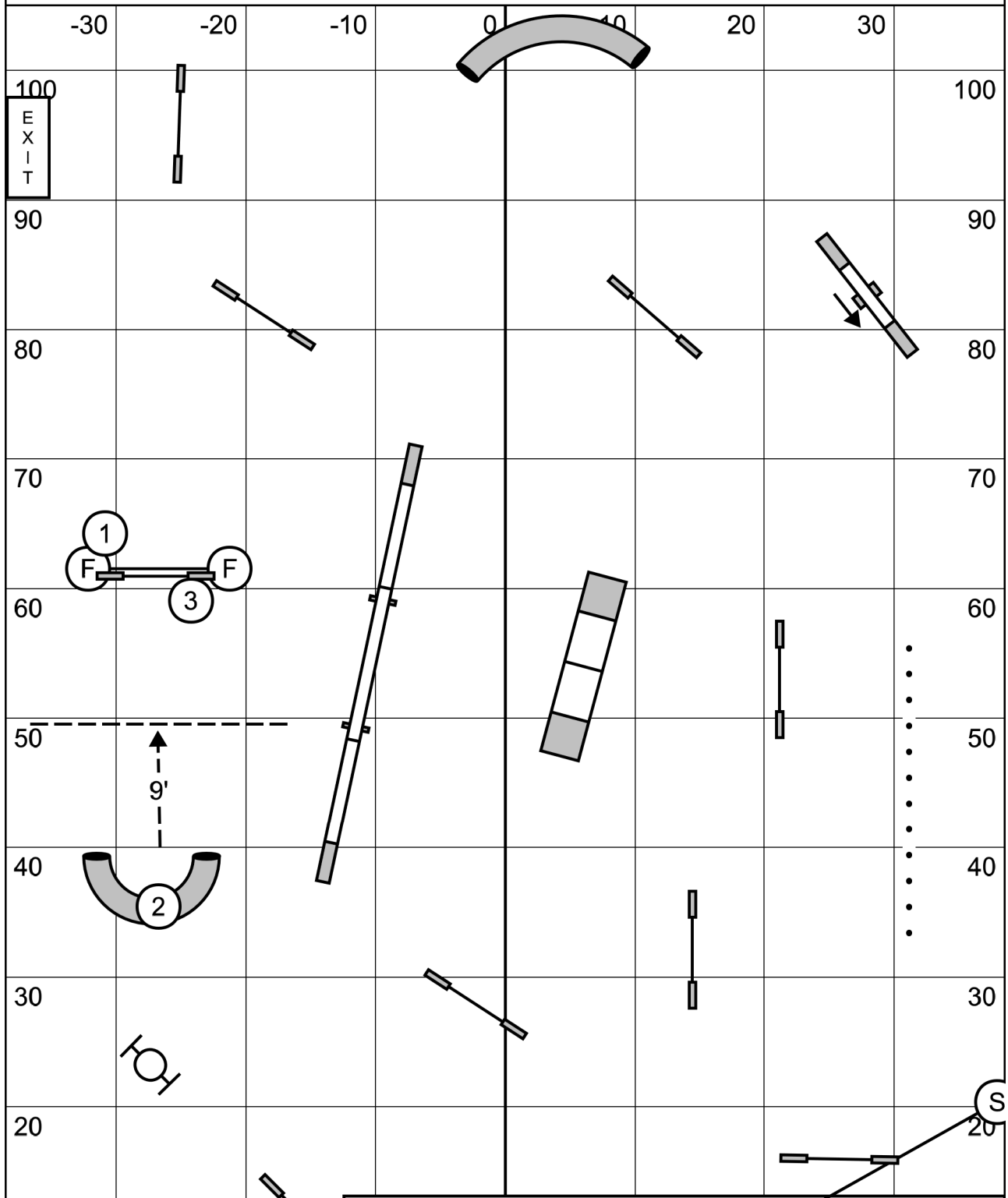


1-2-3-5 System, 5 Pt = A Frame
 25 Sec Open, 13 pt to Q Joker = 20



Back to Back: YES
 Consecutive Contacts: NO

Starters / P1 Gamblers
 Bark NH! -- December 5, 2021 -- Mike Murphy



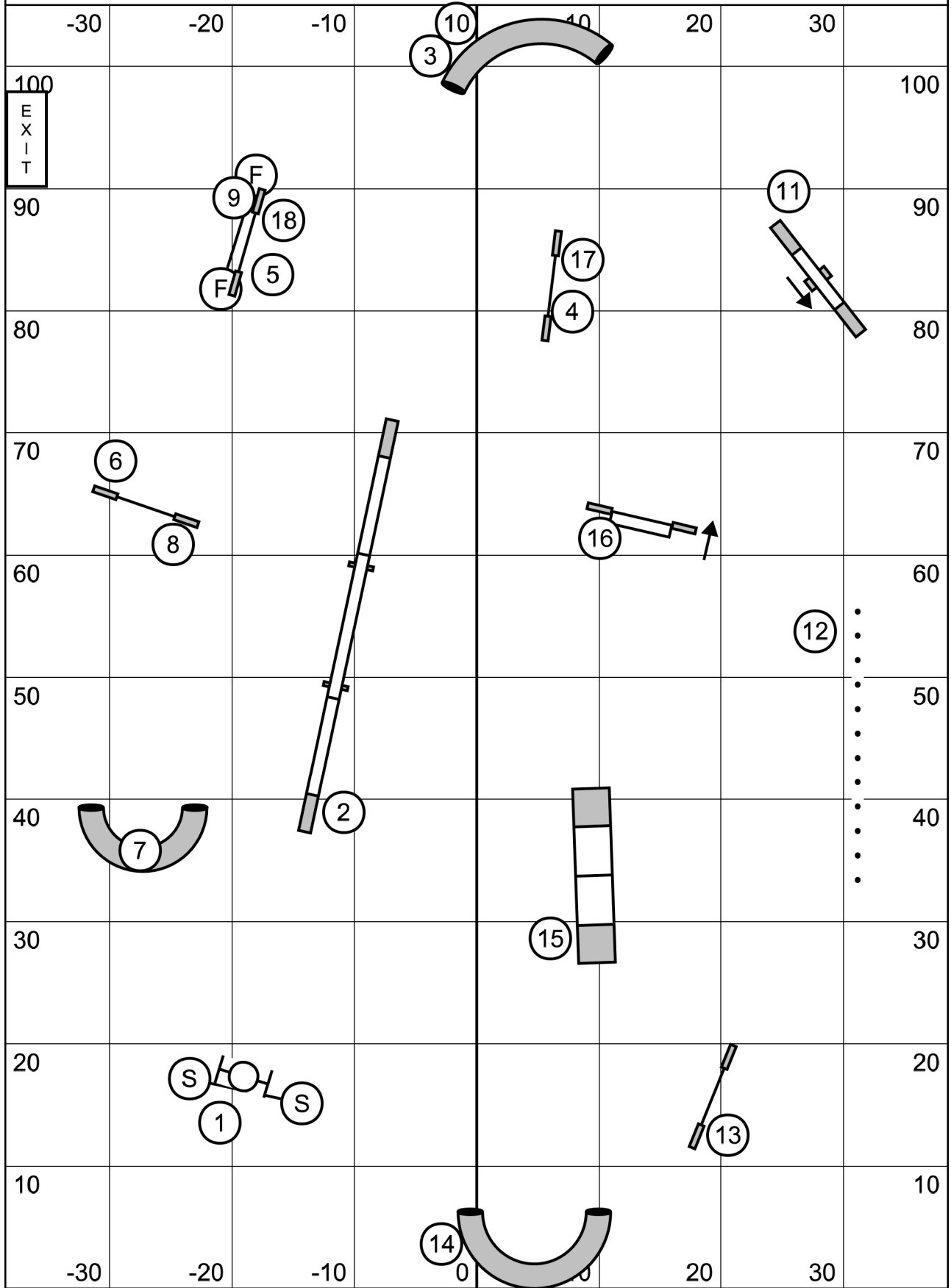
Champ: 20/22/24: 16 sec, 14/16: 17 sec, 10/12: 18 sec
 Perf: 14/16/20: 17 sec, 12: 18 sec, 8: 19 sec

1-2-3-5 System, 5 Pt = A Frame
 25 Sec Open, 13 pt to Q Joker = 20

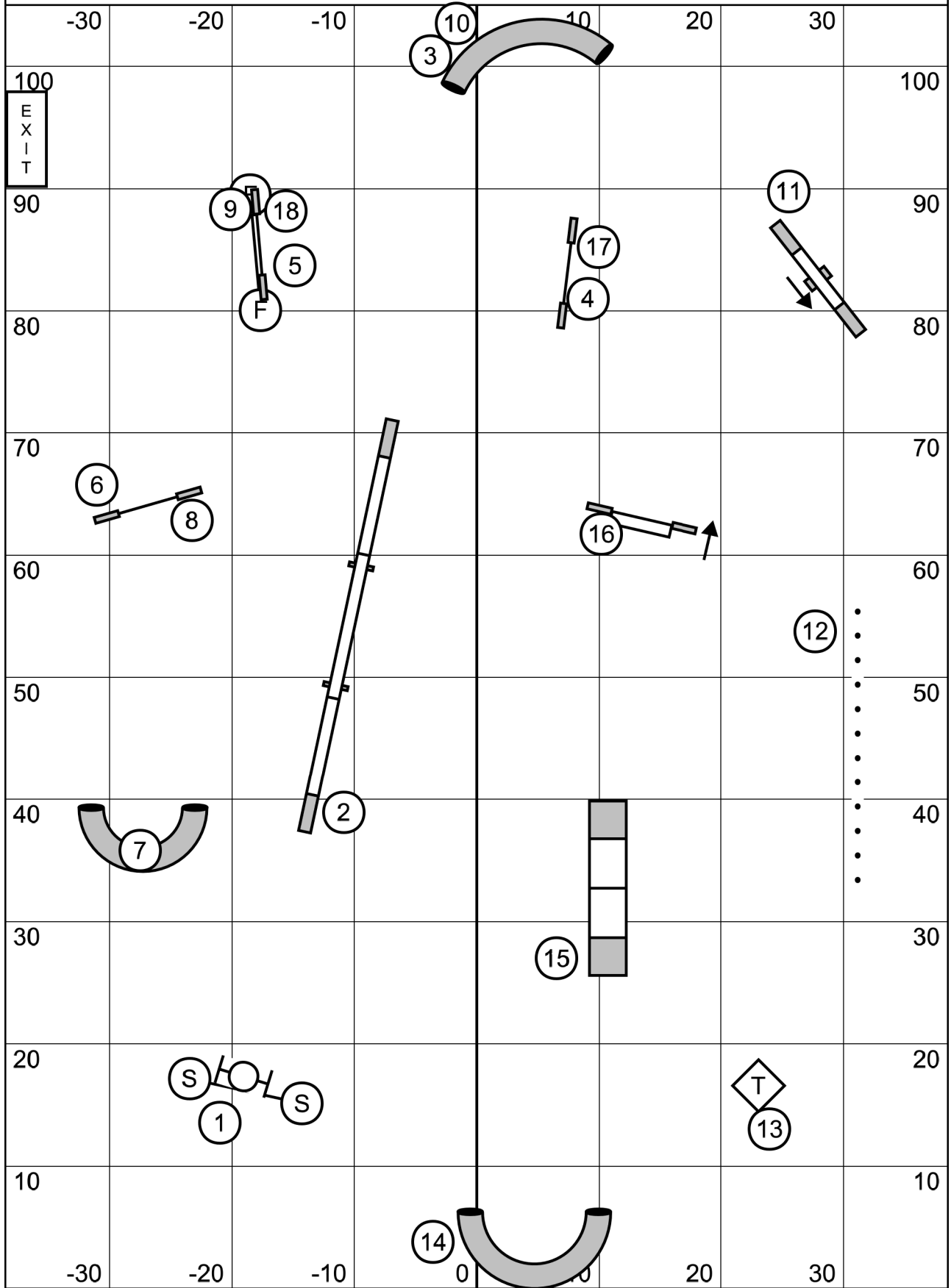
Back to Back: YES
 Consecutive Contacts: NO



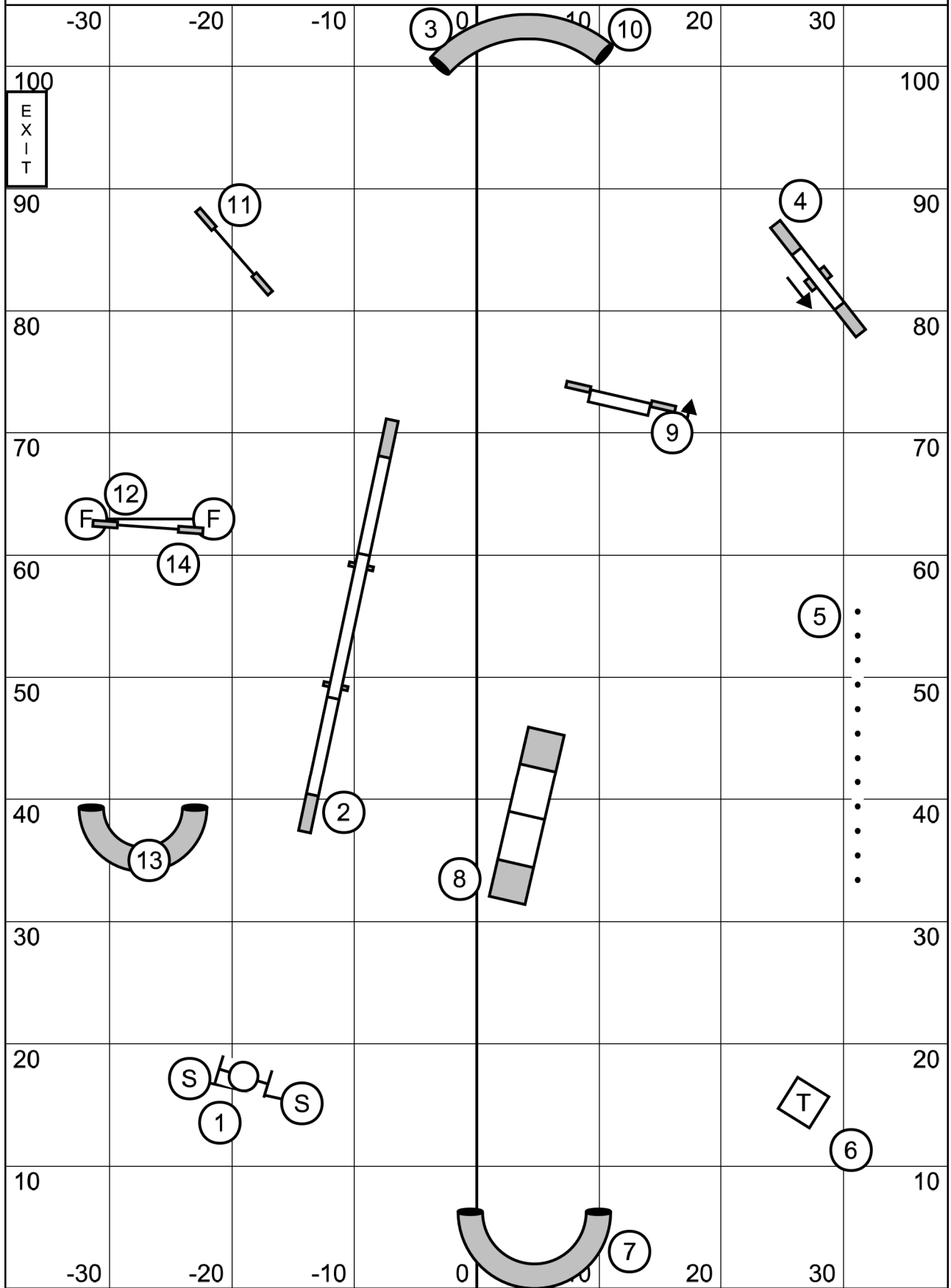
Masters / P3 / Vets Standard
 Bark NH! -- December 5, 2021 -- Mike Murphy



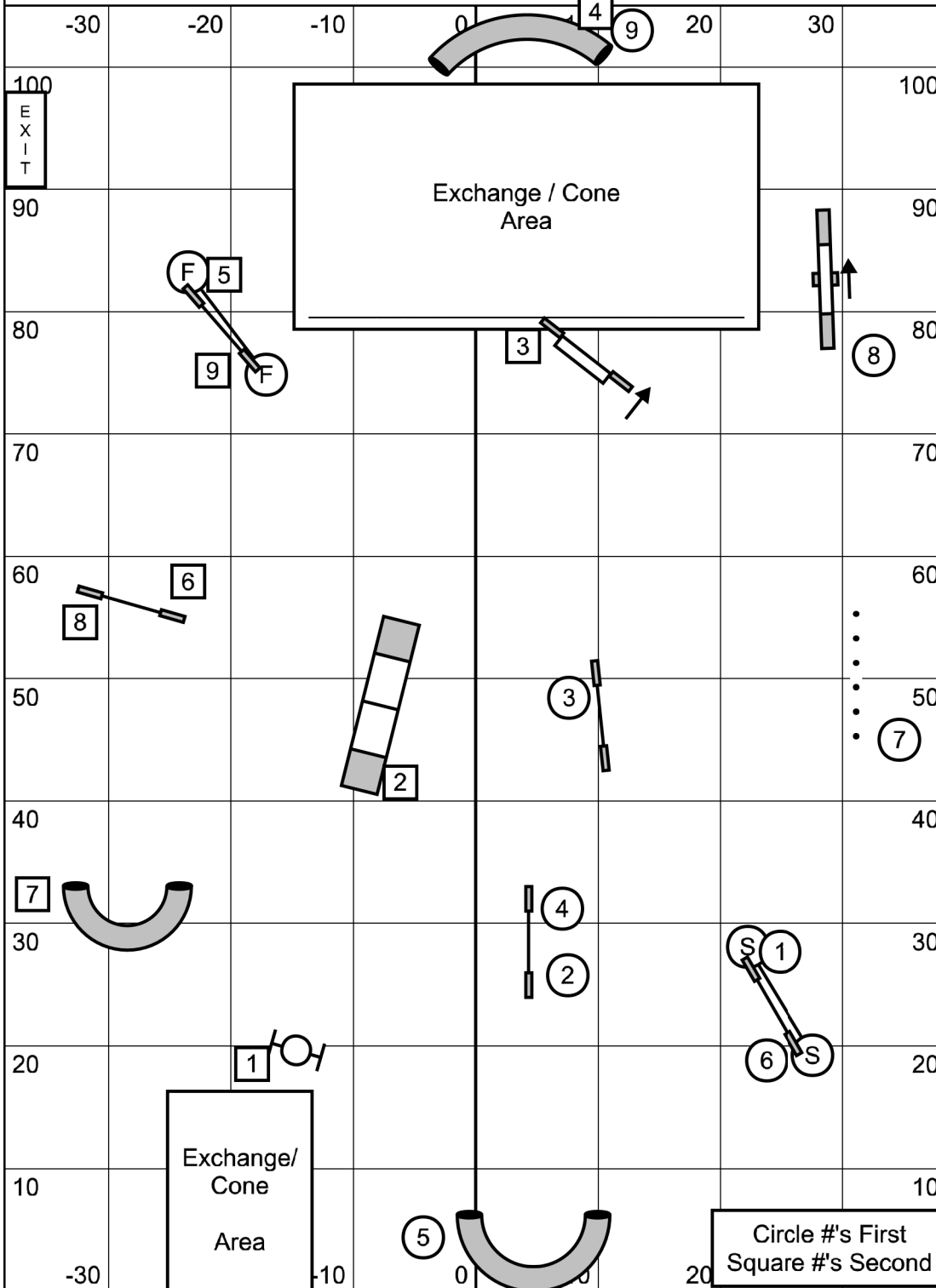
Advanced / P2 Standard
 Bark NH! -- December 5, 2021 -- Mike Murphy



Starters / P1 Standard
 Bark NH! -- December 5, 2021 -- Mike Murphy



Combined Relay
 Bark NH! -- December 5, 2021 -- Mike Murphy



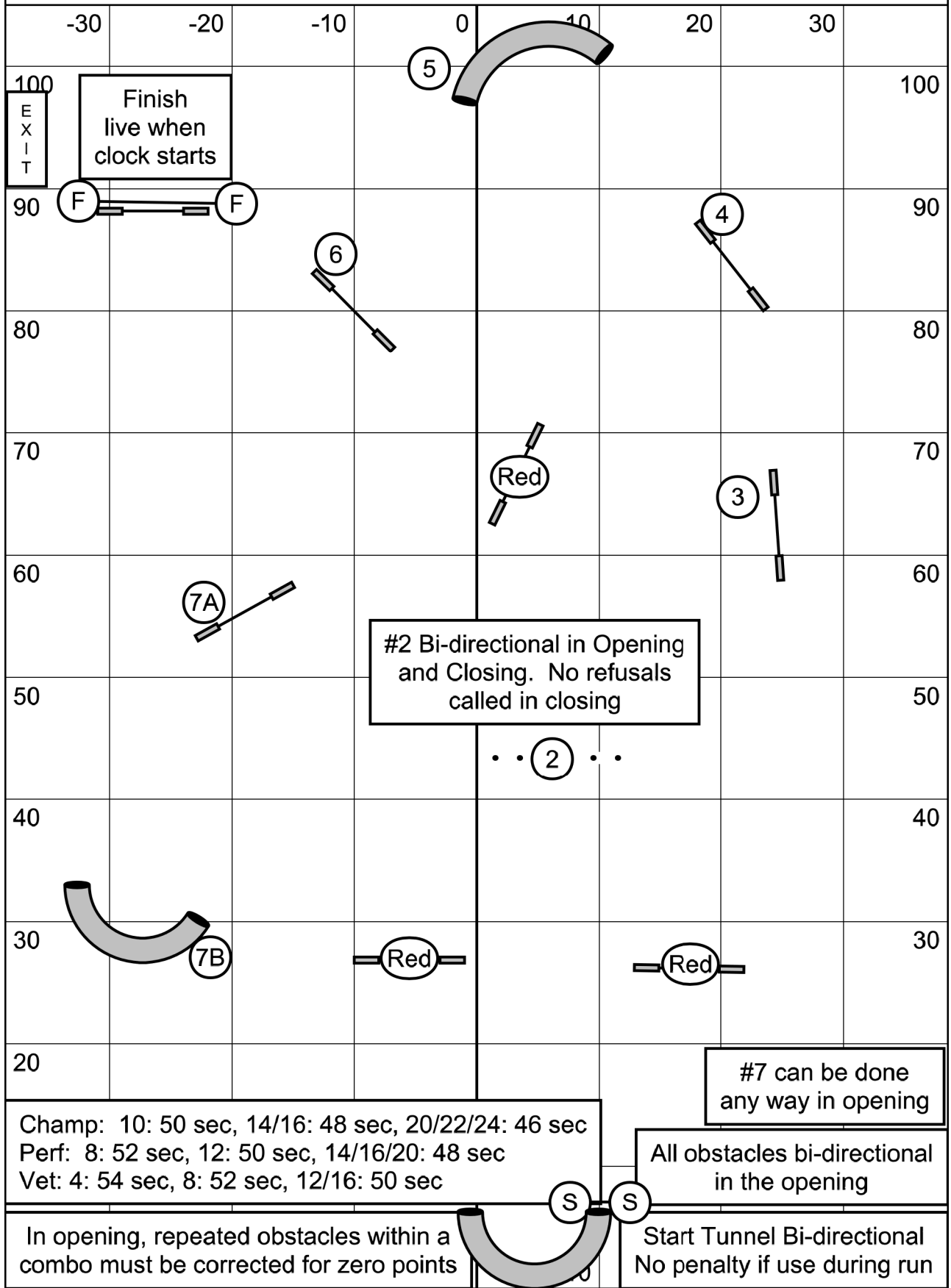
Exchanges will be completed via a traffic cone vs the baton.

Handlers for first dog will touch the cone with any part of their body once their dog clears their last obstacle. The cone can be moved within the exchange area. The last handler does NOT need to touch the cone. Handlers can pickup their dogs and/or use leash once dog clears last obstacle in the exchange area, even before touching the cone. If handler touches cone before the dog clears their last obstacle, 20 second fault.

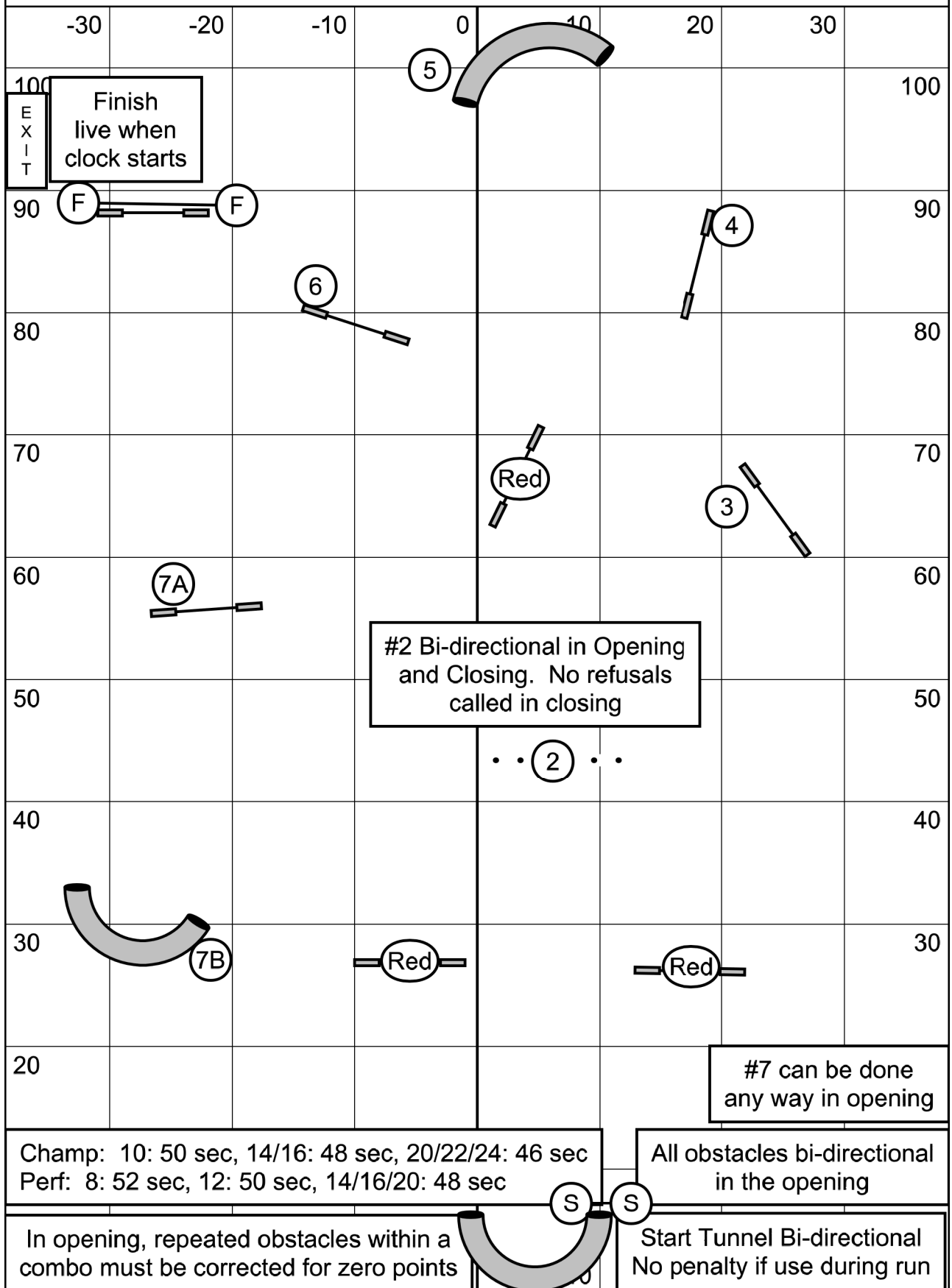
Handlers may hold their dogs, use leashes, but NO bowling the dog & NO scruffing dogs.

2nd handlers can lead out while prior dog is running, as long as they dont interfere with dog running.

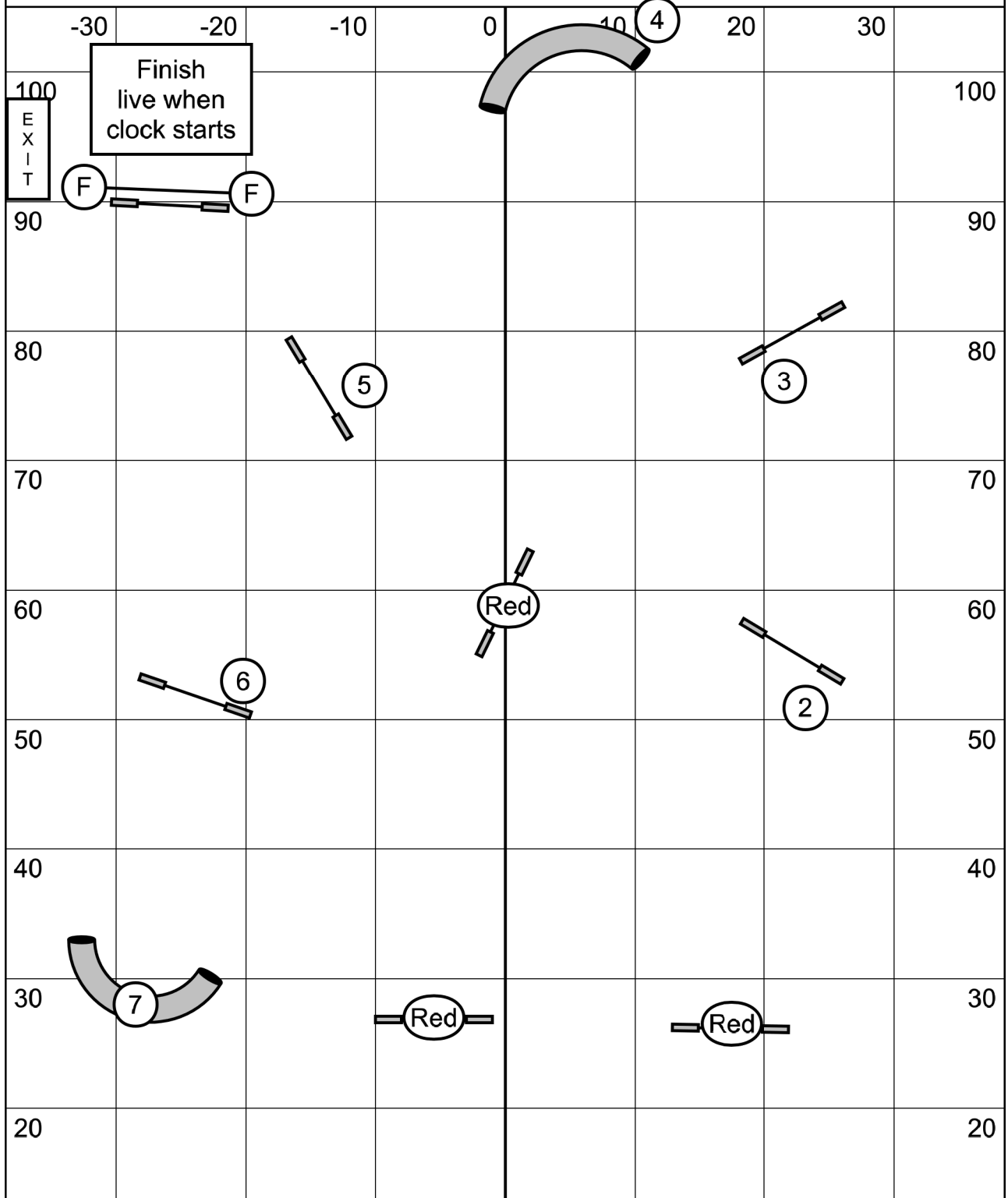
Masters / P3 / Vets Snooker
 Bark NH! -- December 5, 2021 -- Mike Murphy



Advanced / P2 Snooker
 Bark NH! -- December 5, 2021 -- Mike Murphy



Starters / P1 Snooker
 Bark NH! -- December 5, 2021 -- Mike Murphy

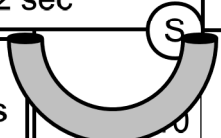


Champ: 10: 54 sec, 14/16: 52 sec, 20/22/24: 50 sec
 Perf: 8: 56 sec, 12: 54 sec, 14/16/20: 52 sec

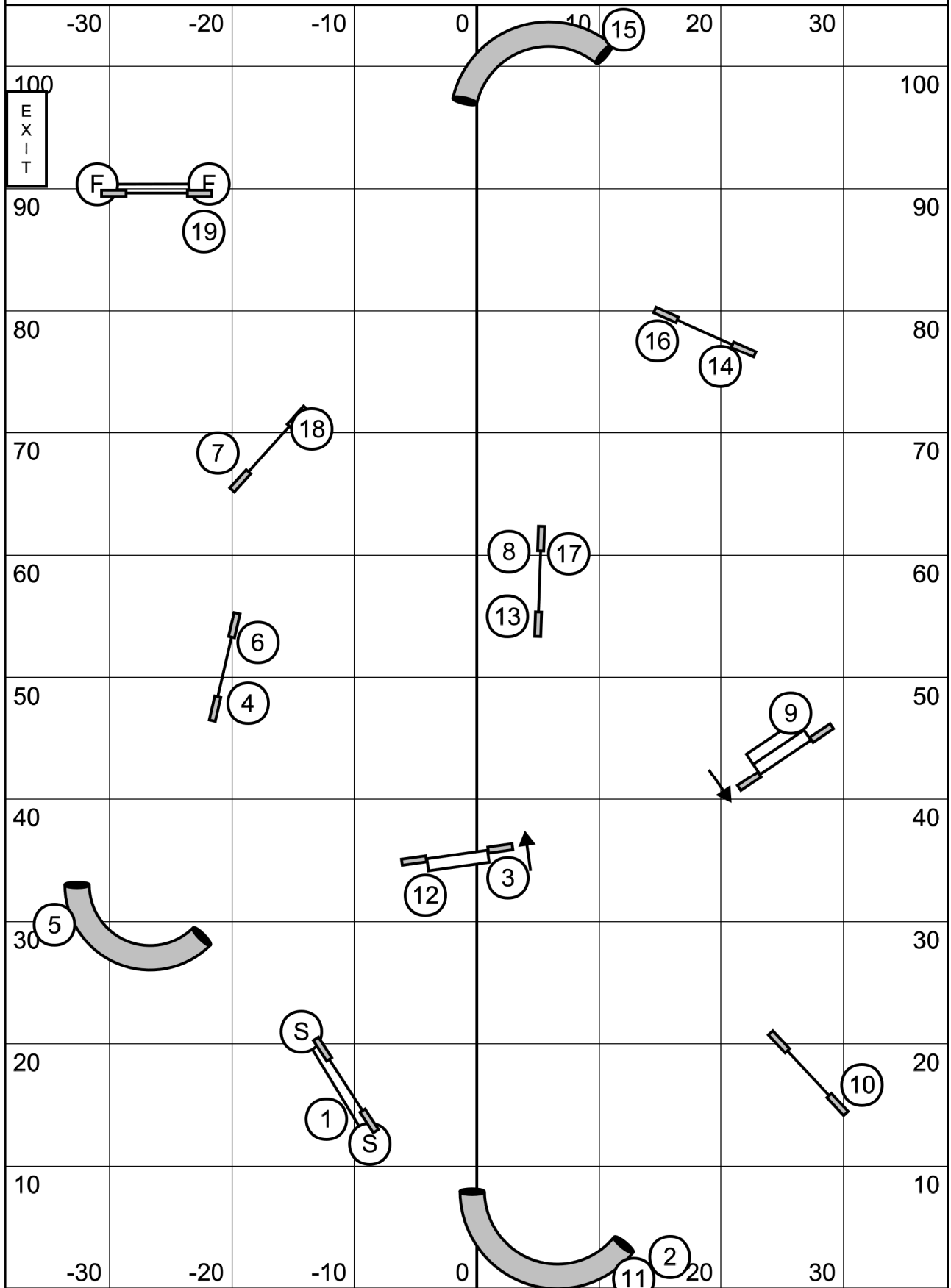
All obstacles bi-directional
 in the opening

In opening, repeated obstacles within a
 combo must be corrected for zero points

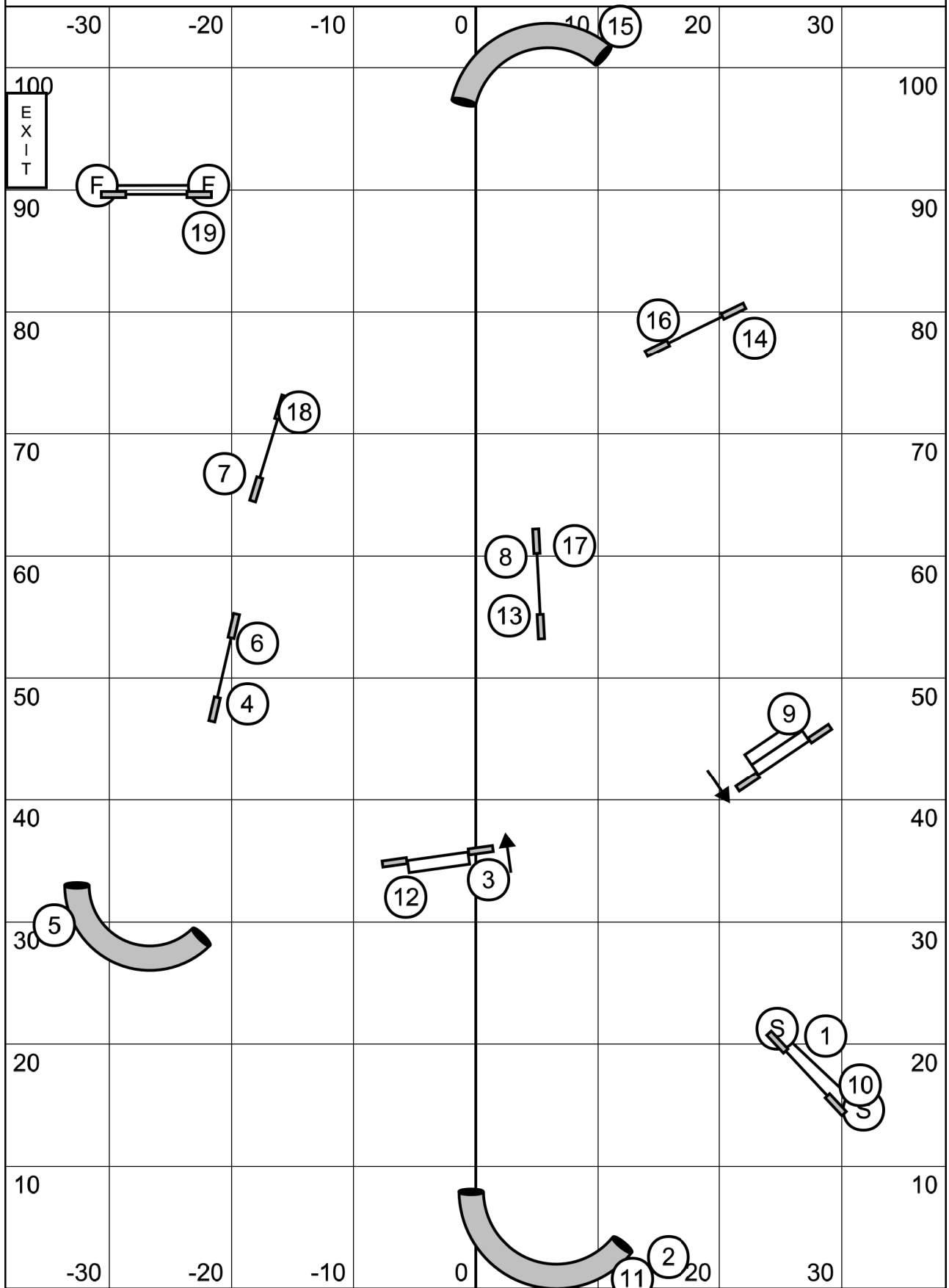
Start Tunnel Bi-directional
 No penalty if use during run



Masters / P3 / Vets Jumpers
 Bark NH! -- December 5, 2021 -- Mike Murphy



Advanced / P2 Jumpers
 Bark NH! -- December 5, 2021 -- Mike Murphy



Starters / P1 Jumpers
 Bark NH! -- December 5, 2021 -- Mike Murphy

