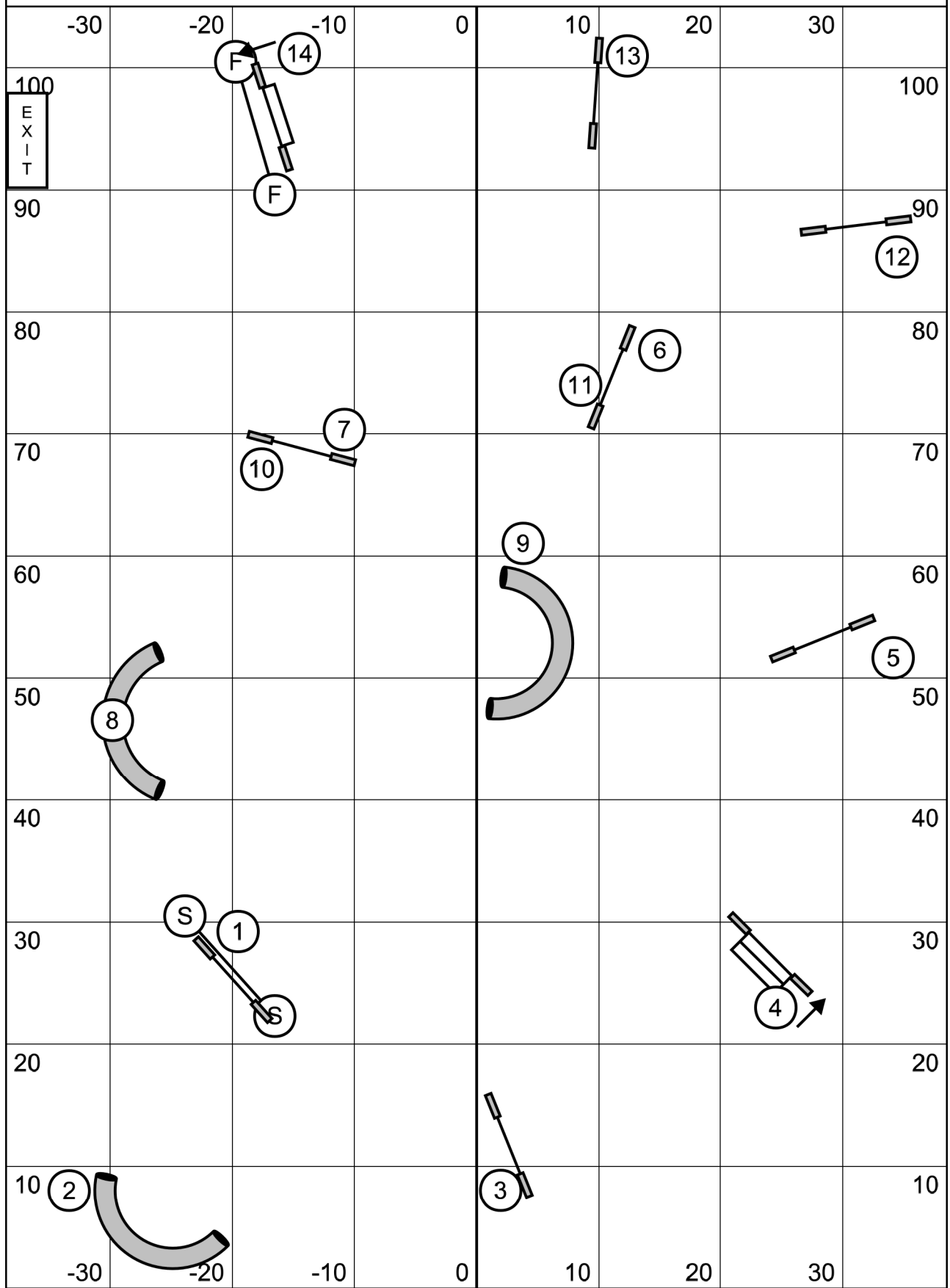
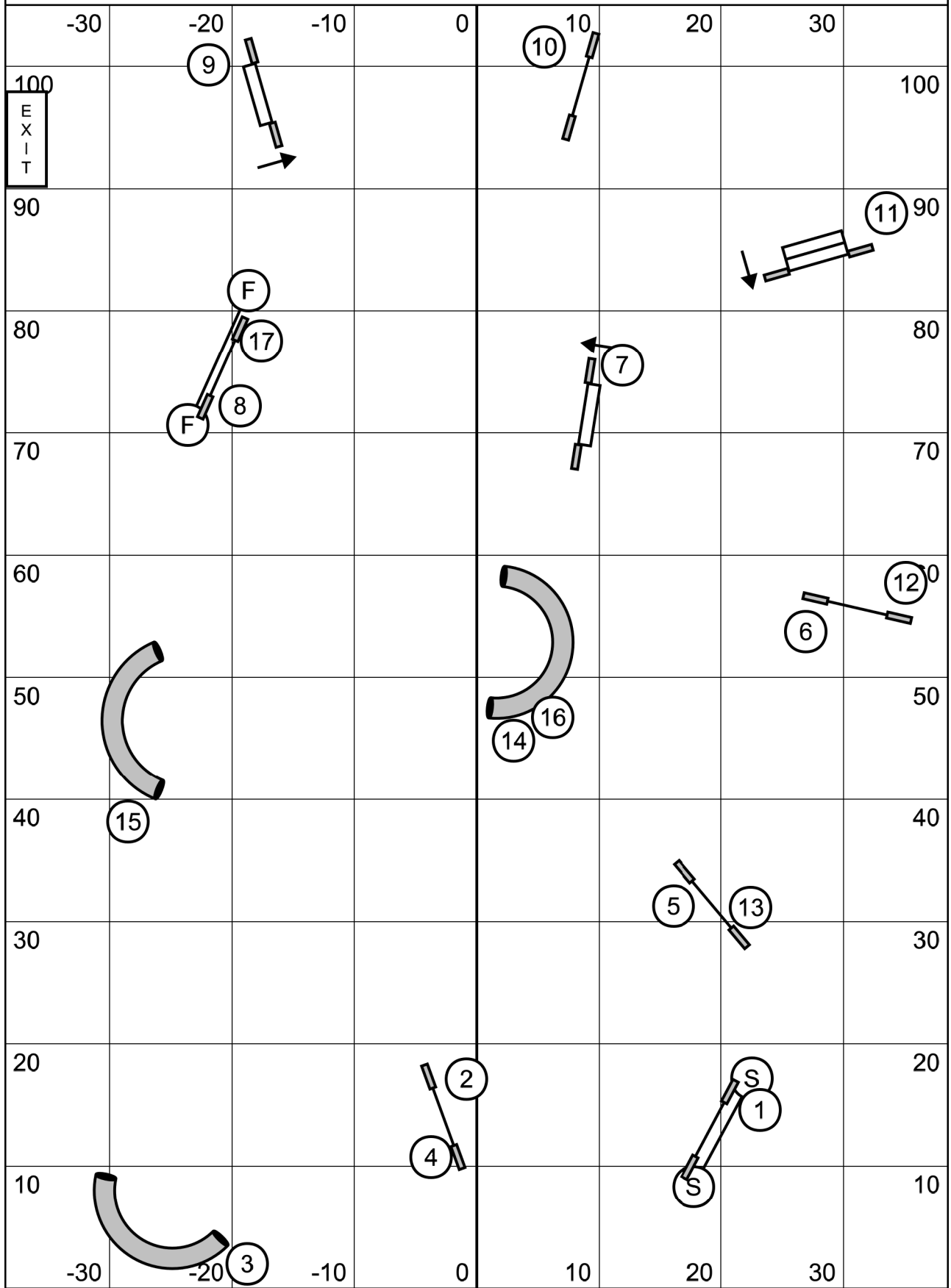


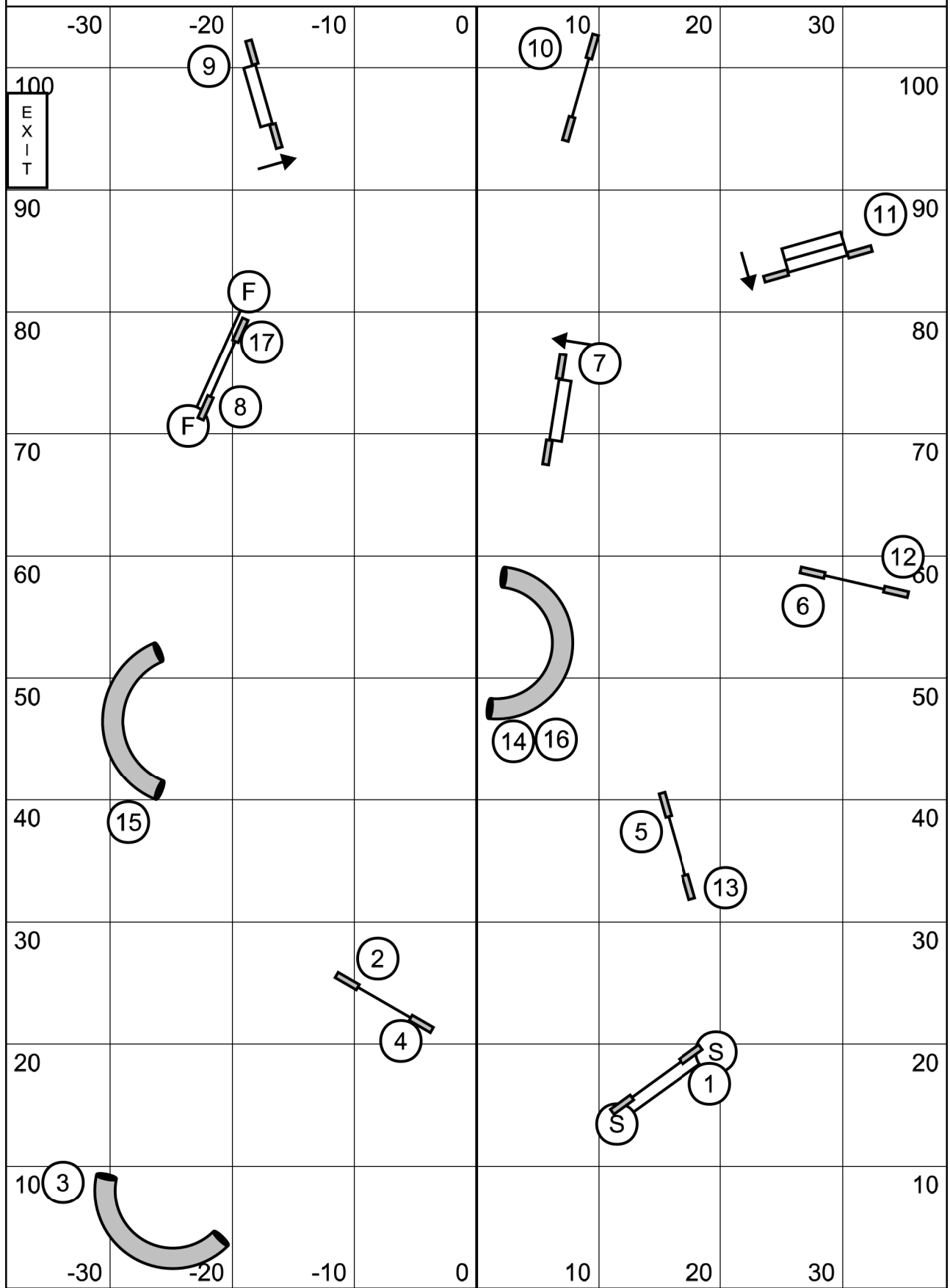
Starters / P1 Jumpers
 Bark NH! -- December 4, 2021 -- Mike Murphy



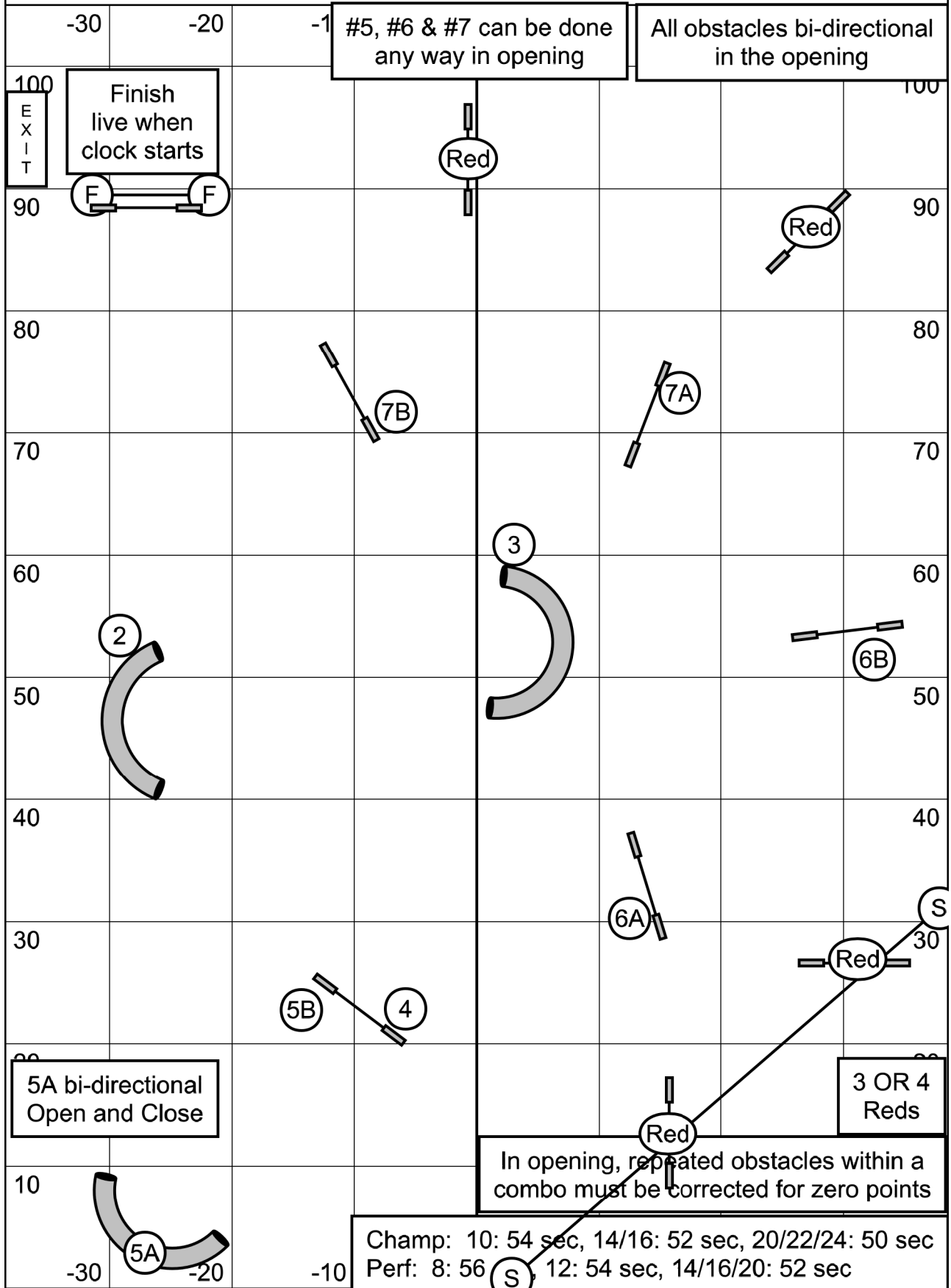
Advanced / P2 Jumpers
 Bark NH! -- December 4, 2021 -- Mike Murphy



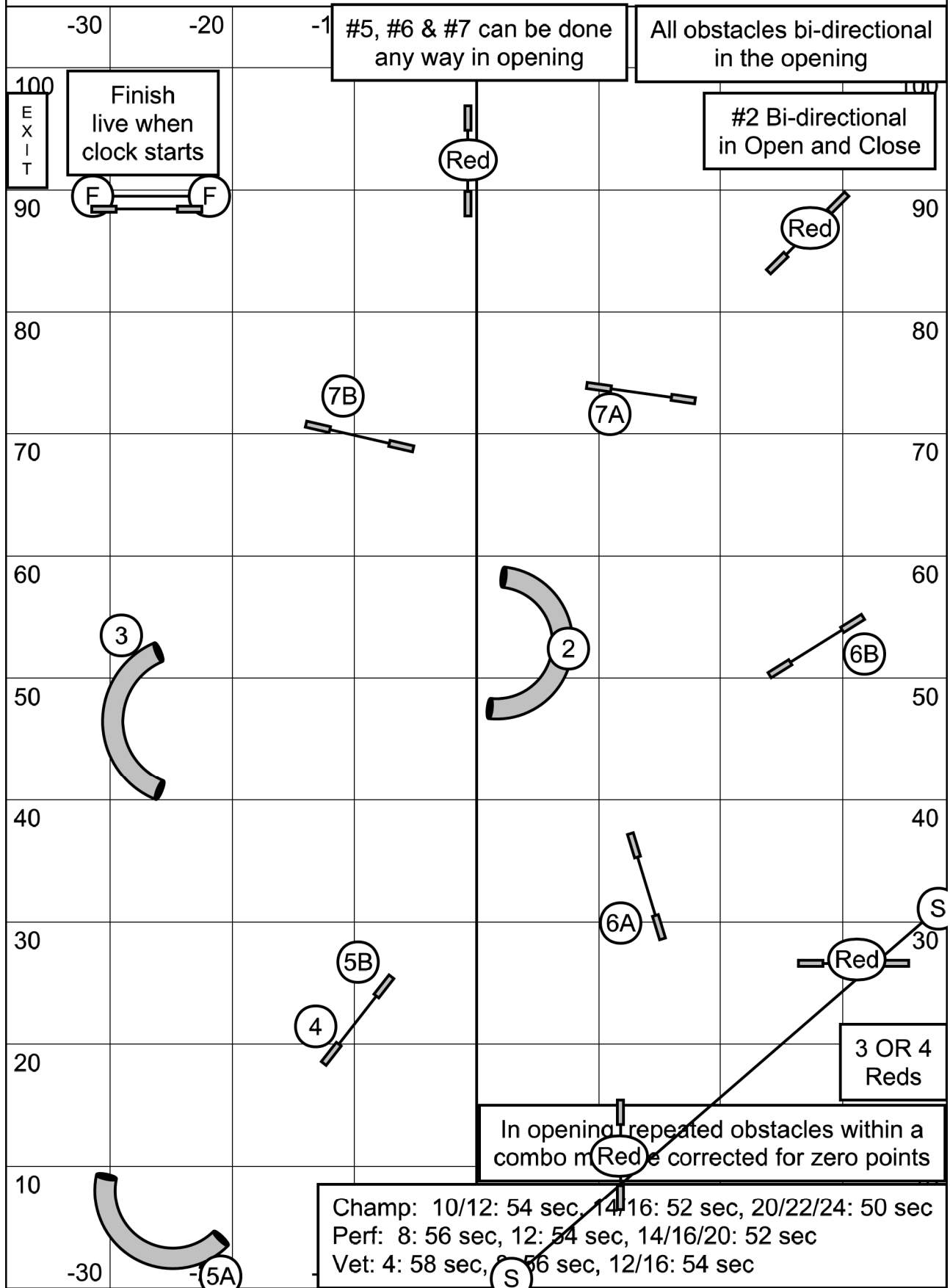
Masters / P3 / Vets Jumpers
 Bark NH! -- December 4, 2021 -- Mike Murphy



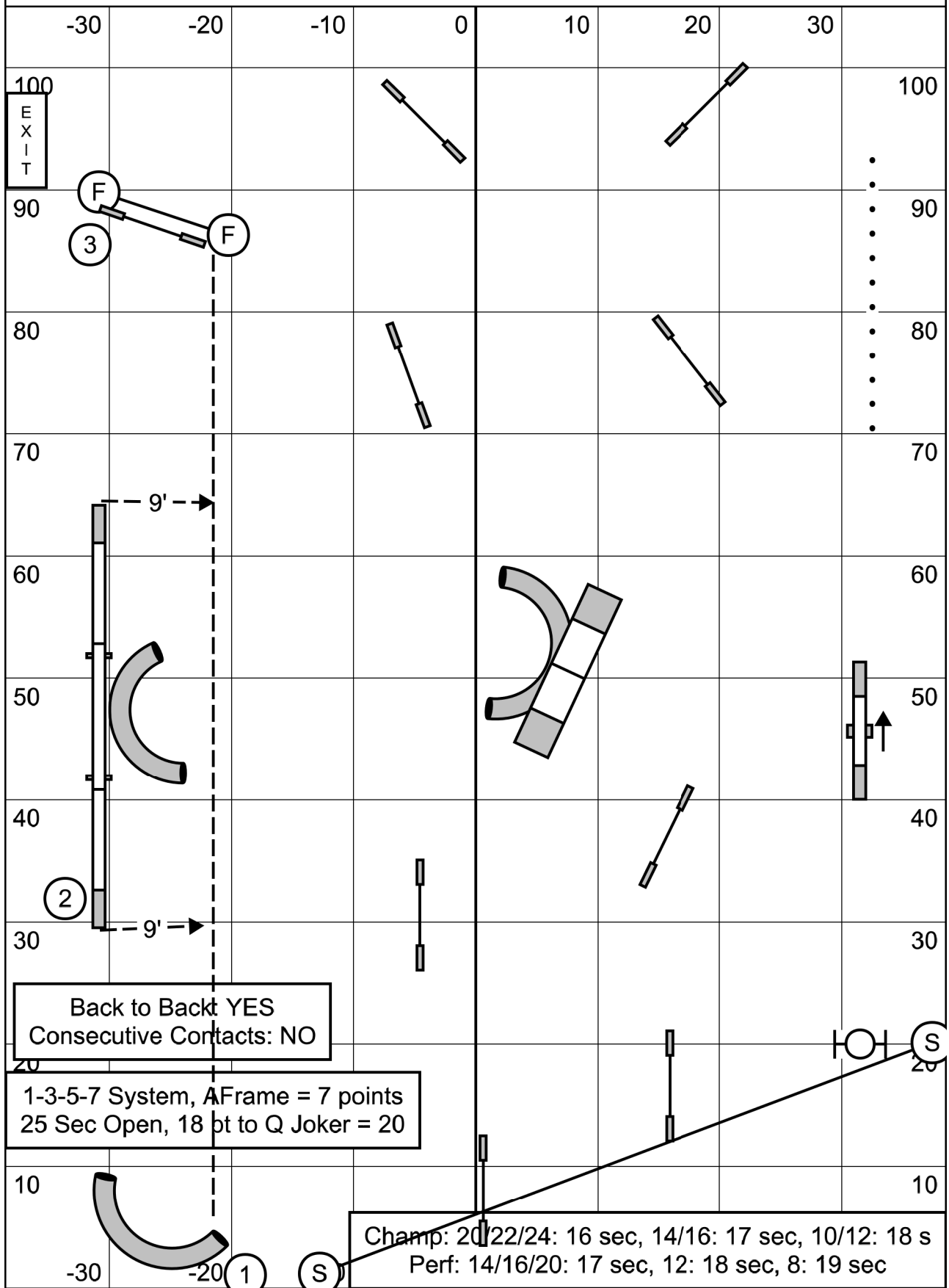
Advanced / P2 Snooker
 Bark NH! -- December 4, 2021 -- Mike Murphy



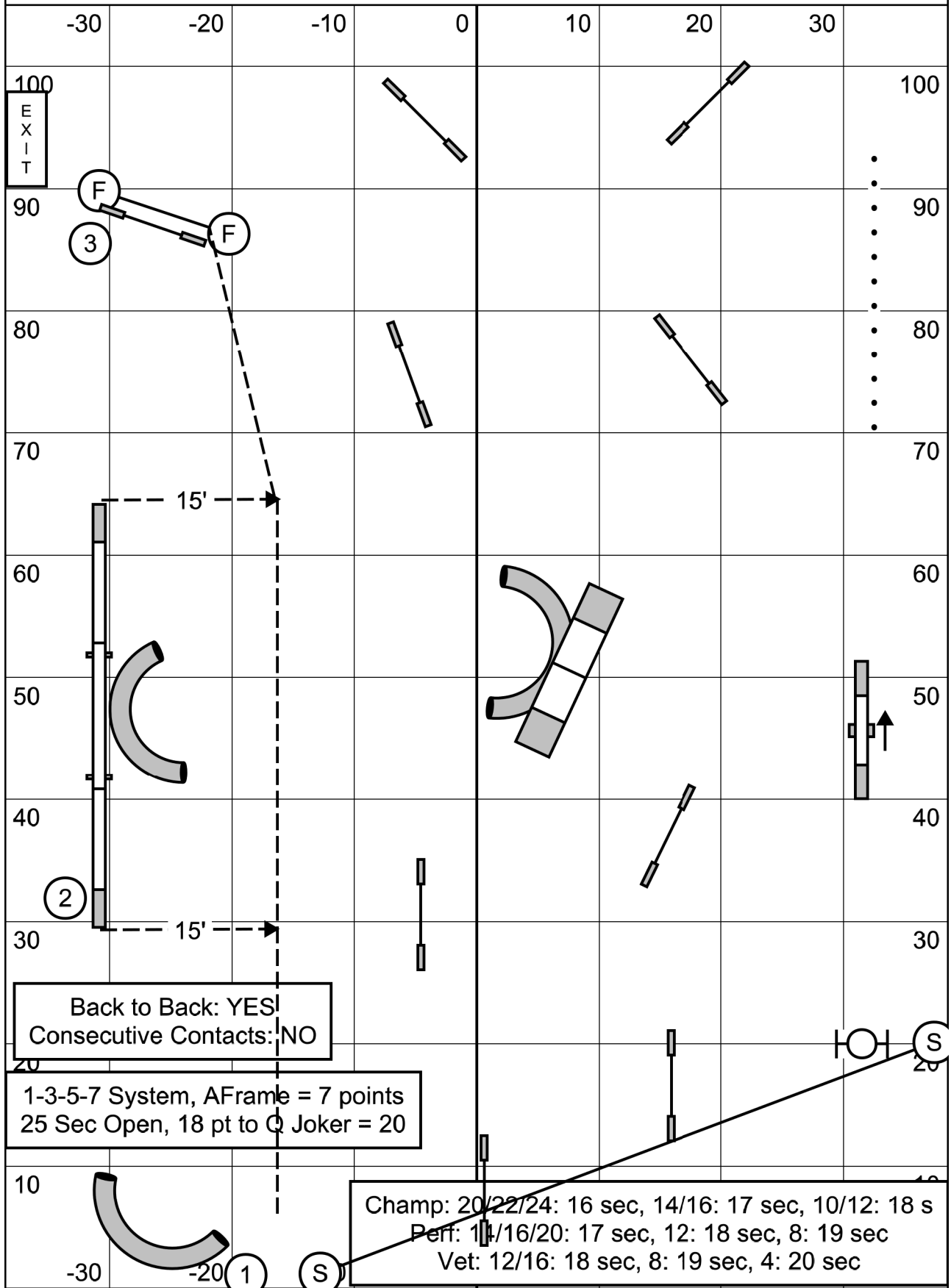
Masters / P3 / Vets Snooker
 Bark NH! -- December 4, 2021 -- Mike Murphy



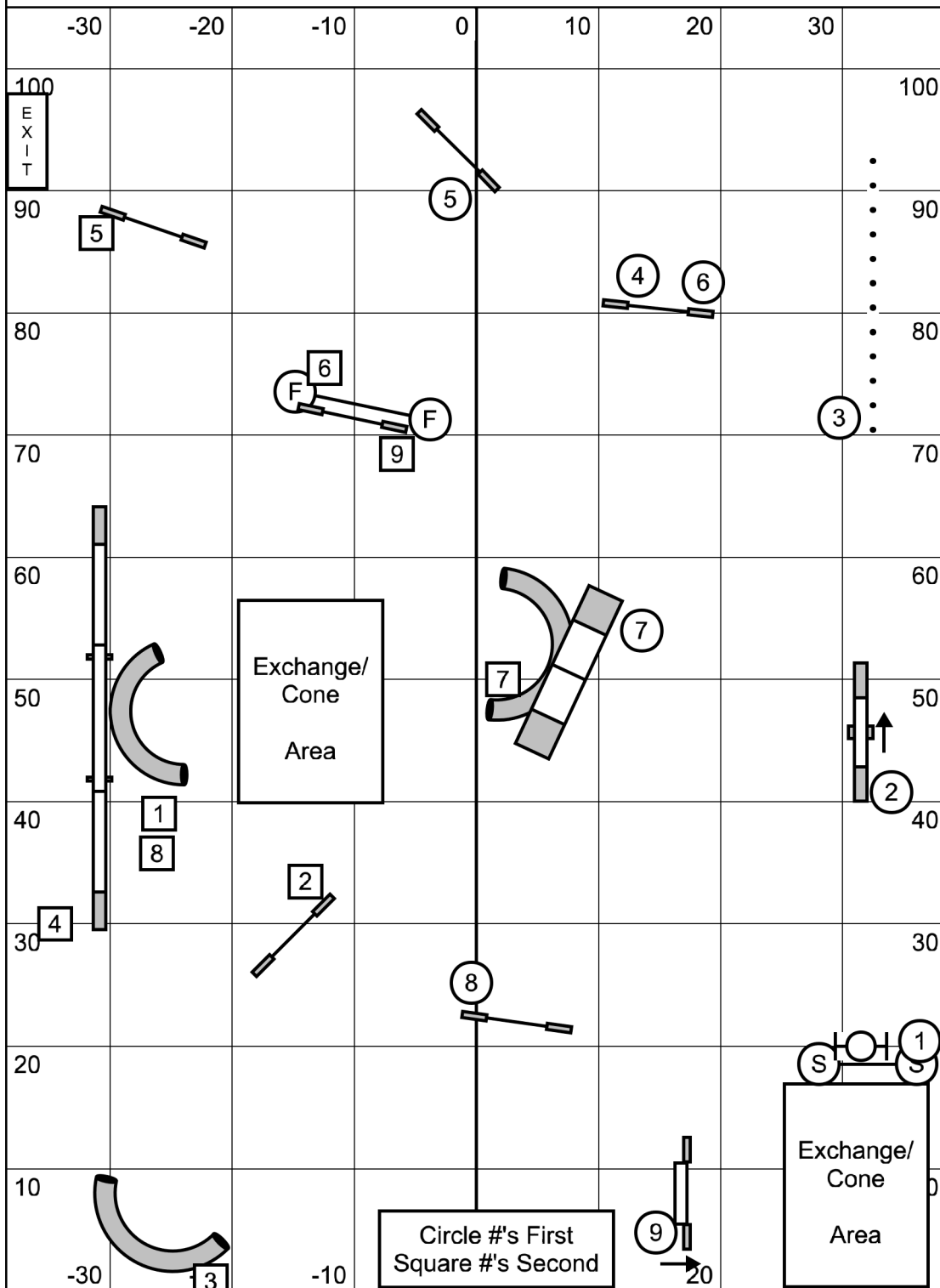
Advanced / P2 Gamblers
 Bark NH! -- December 4, 2021 -- Mike Murphy



Masters / P3 / Vets Gamblers
 Bark NH! -- December 4, 2021 -- Mike Murphy



Combined Pairs
 Bark NH! -- December 4, 2021 -- Mike Murphy



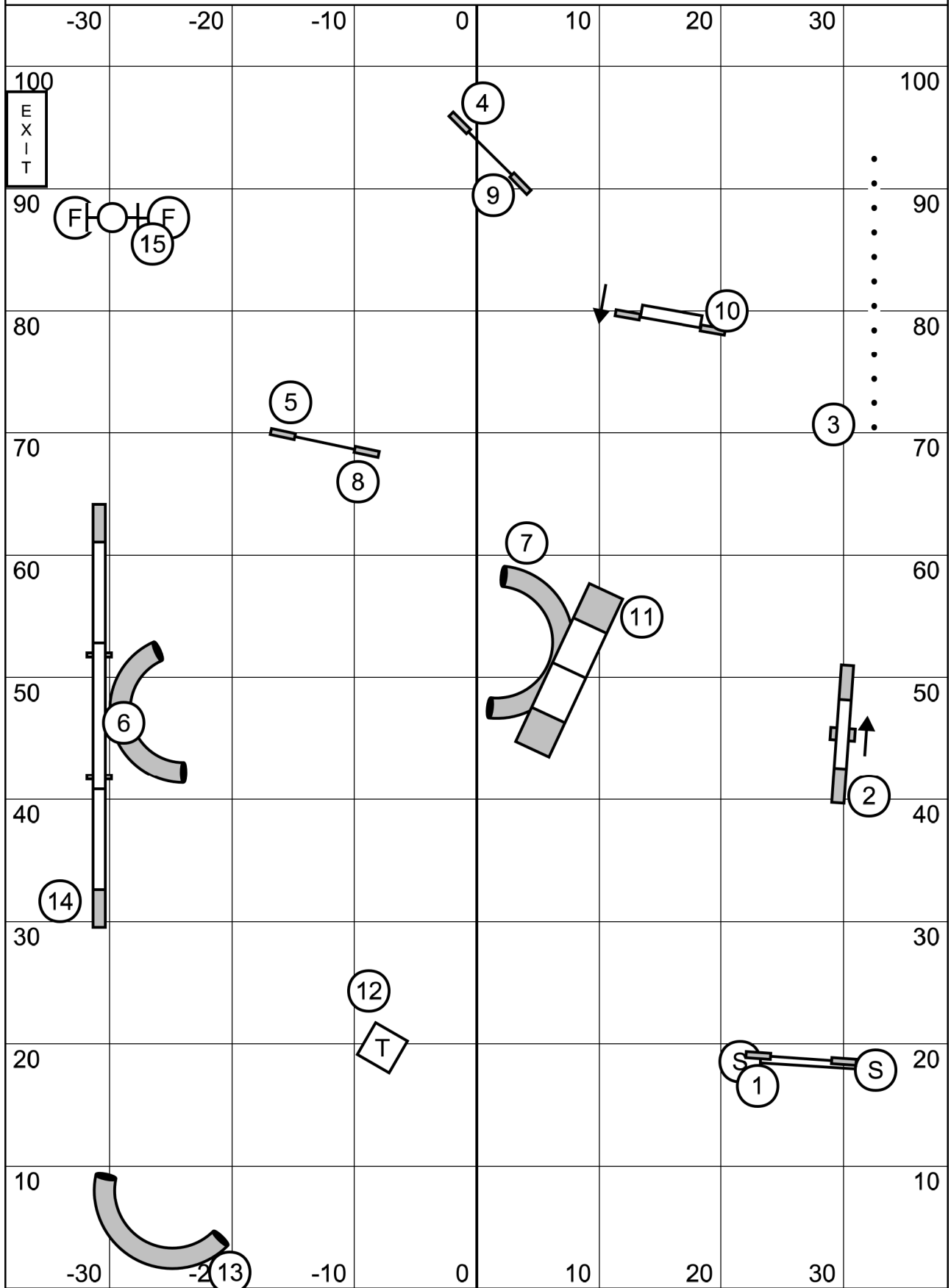
Exchanges will be completed via a traffic cone vs the baton.

Handlers for first dog will touch the cone with any part of their body once their dog clears their last obstacle. The cone can be moved within the exchange area. The last handler does NOT need to touch the cone. Handlers can pickup their dogs and/or use leash once dog clears last obstacle in the exchange area, even before touching the cone. If handler touches cone before the dog clears their last obstacle, 20 second fault.

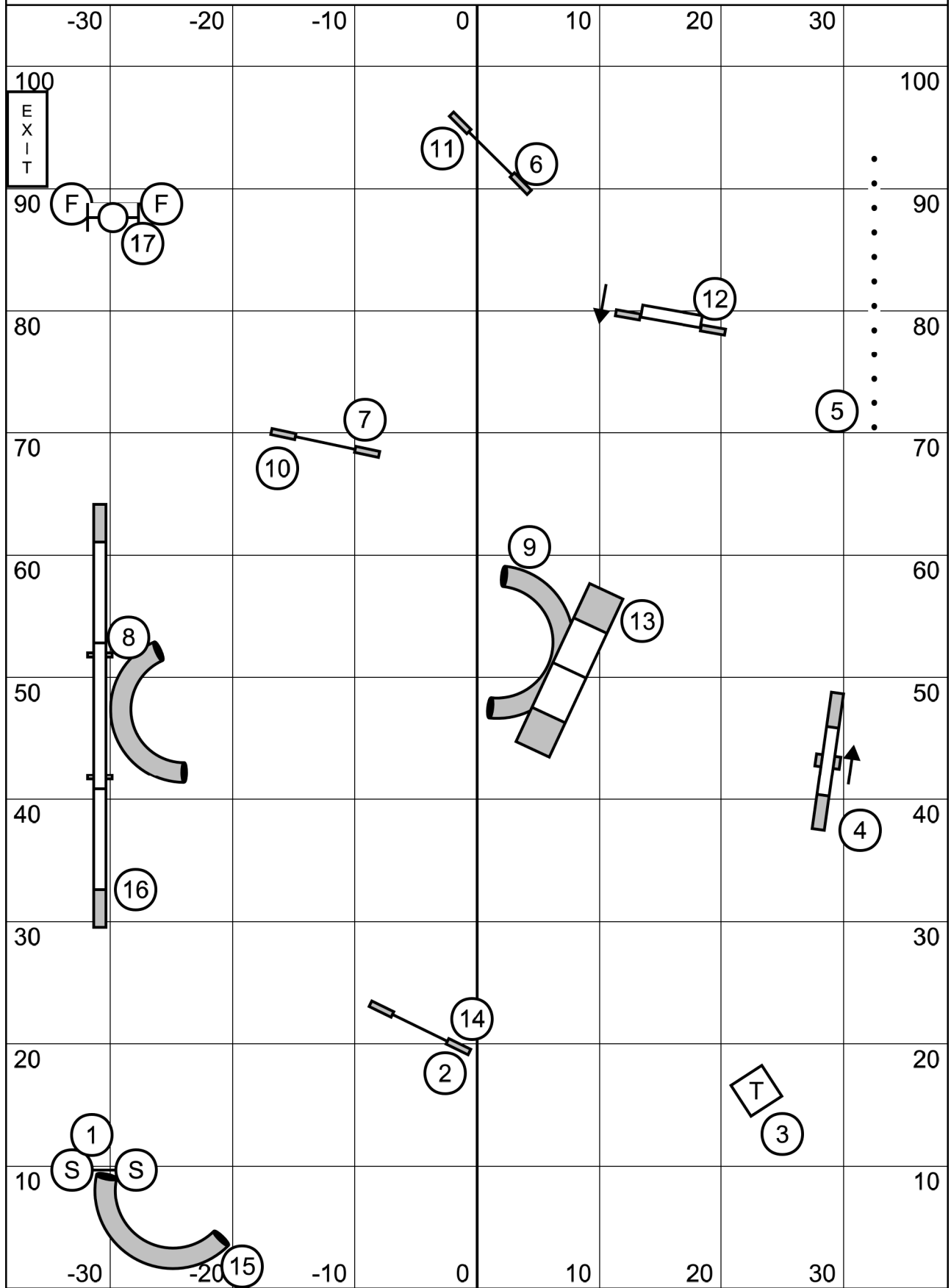
Handlers may hold their dogs, use leashes, but NO bowling the dog & NO scruffing dogs.

2nd handlers can lead out while prior dog is running, as long as they dont interfere with dog running.

Starters / P1 Standard
 Bark NH! -- December 4, 2021 -- Mike Murphy



Advanced / P2 Standard
Bark NH! -- December 4, 2021 -- Mike Murphy



Masters / P3 / Vets Standard
 Bark NH! -- December 4, 2021 -- Mike Murphy

