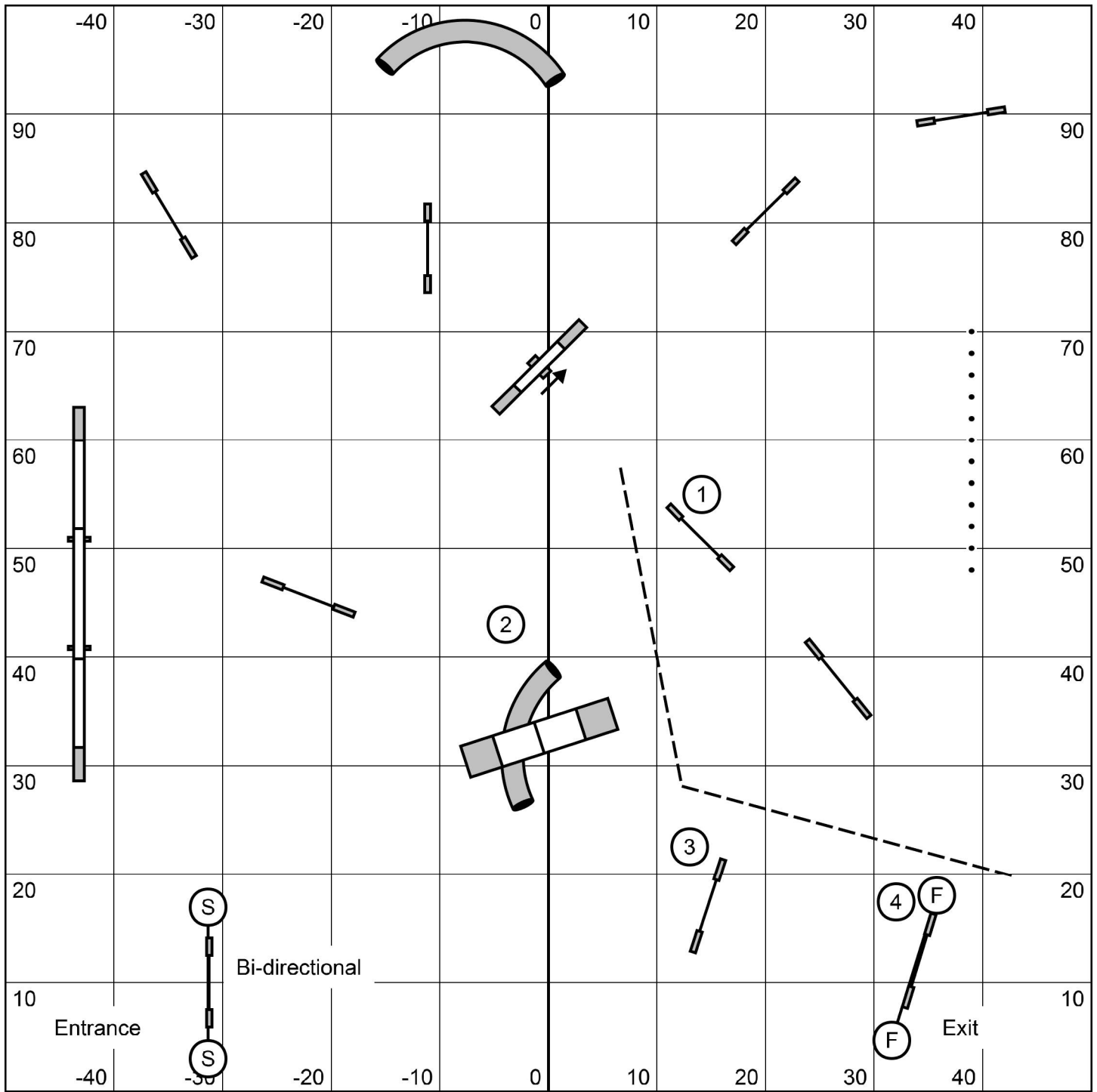


Steeplechase/Performance Speed Jumping  
 PAWS  
 9/19/21  
 Peggy O'Connell

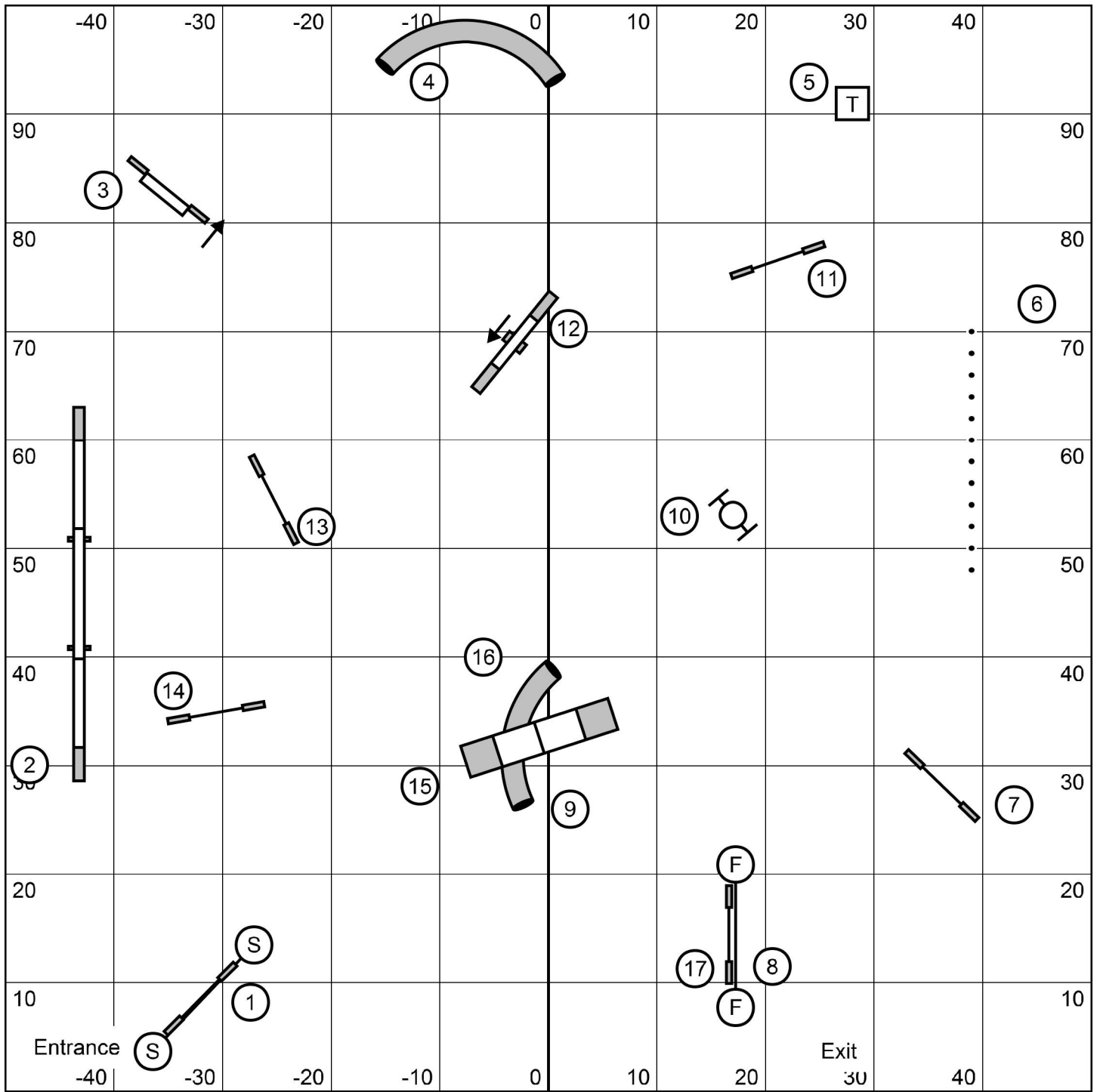




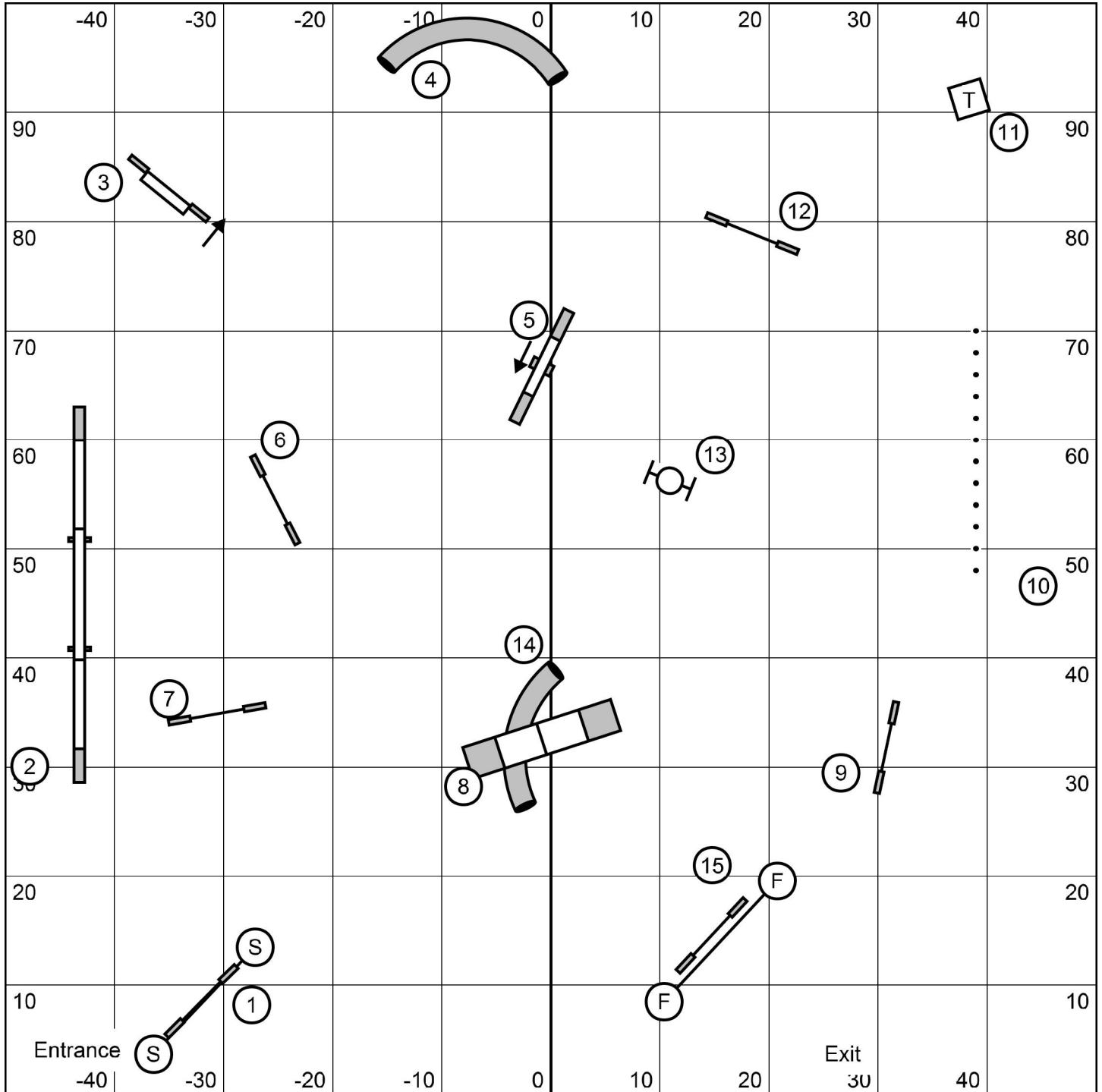
1-2-3-5 system (teeter=5)  
 13 pts needed in opening  
 No contact to contact  
 Back to back ok

Starters/P1 Gamblers  
 PAWS  
 9/19/21  
 Peggy O'Connell

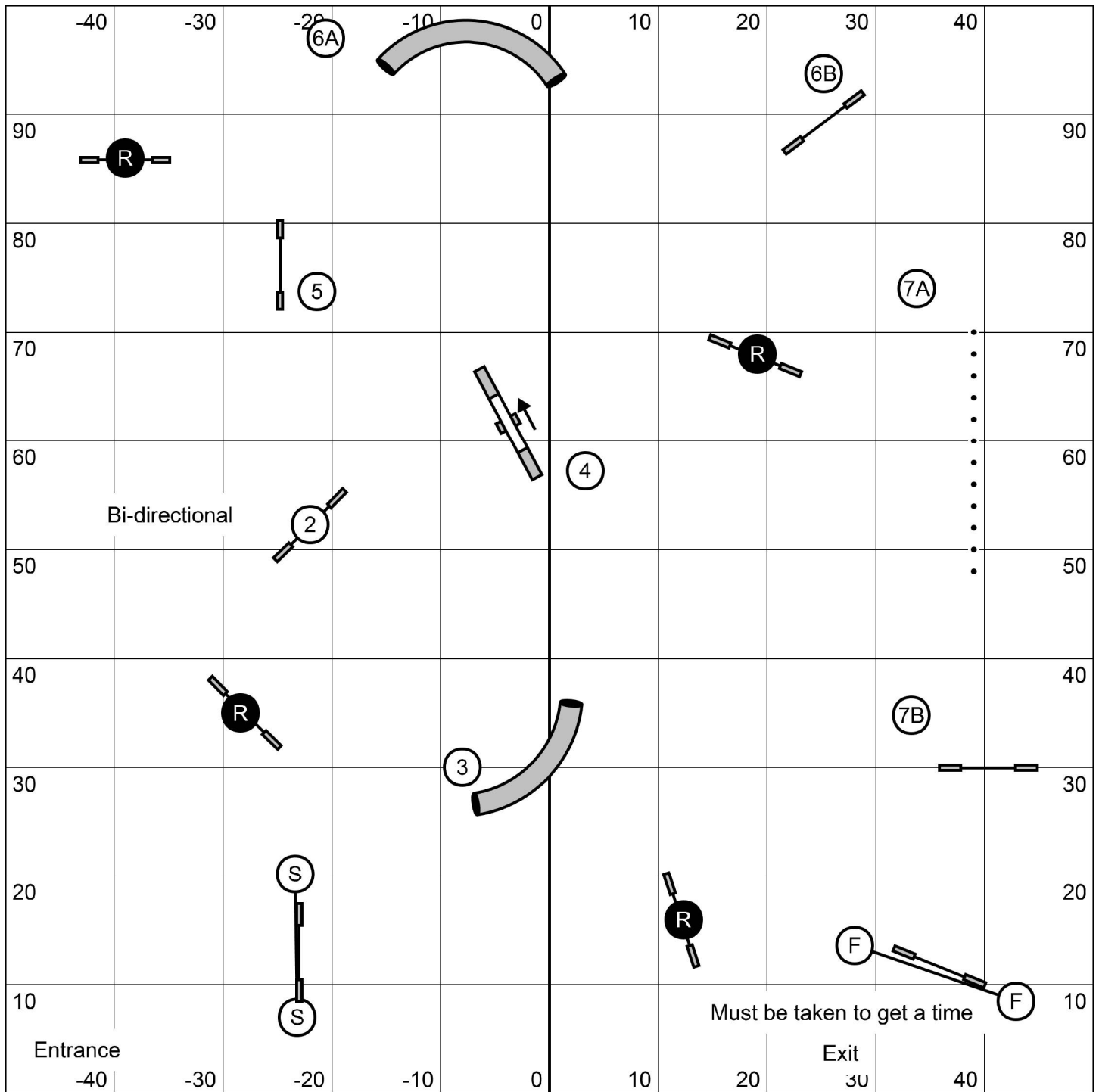
25 second opening  
 C20/22/24 - 13 s  
 C14/16 - 14 s / C10/12 - 15 s  
 Perf +1



Advanced/P2 Standard  
 PAWS  
 9/19/21  
 Peggy O'Connell



Starters/P1 Standard  
 PAWS  
 9/19/21  
 Peggy O'Connell

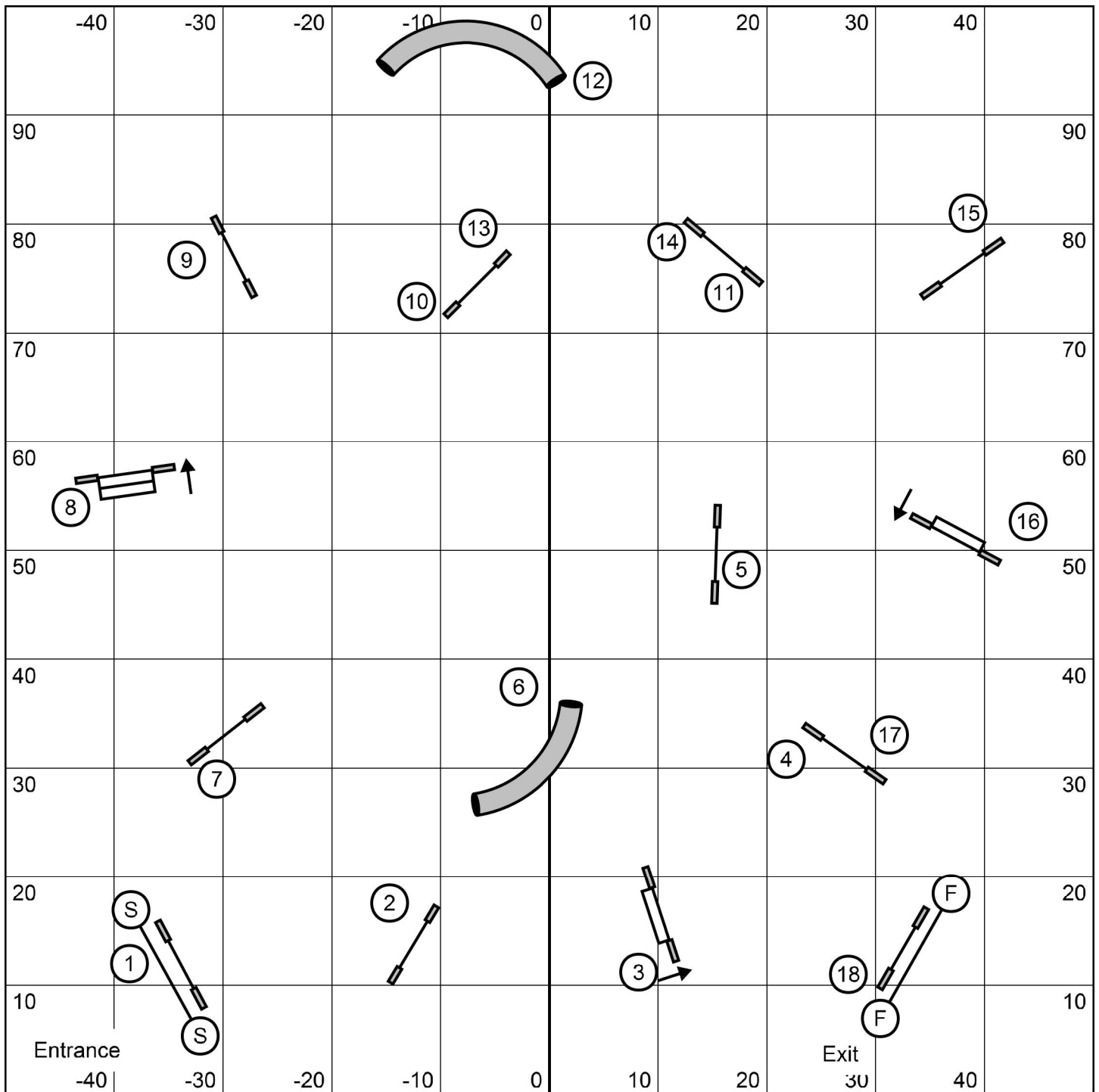


Attempt 3 Reds ONLY  
 Combos any order/direction in open  
 As numbered in closing  
 Start jump dead in open  
 Finish jump live at all times

Advanced/P2 Snooker  
 PAWS  
 9/19/21  
 Peggy O'Connell

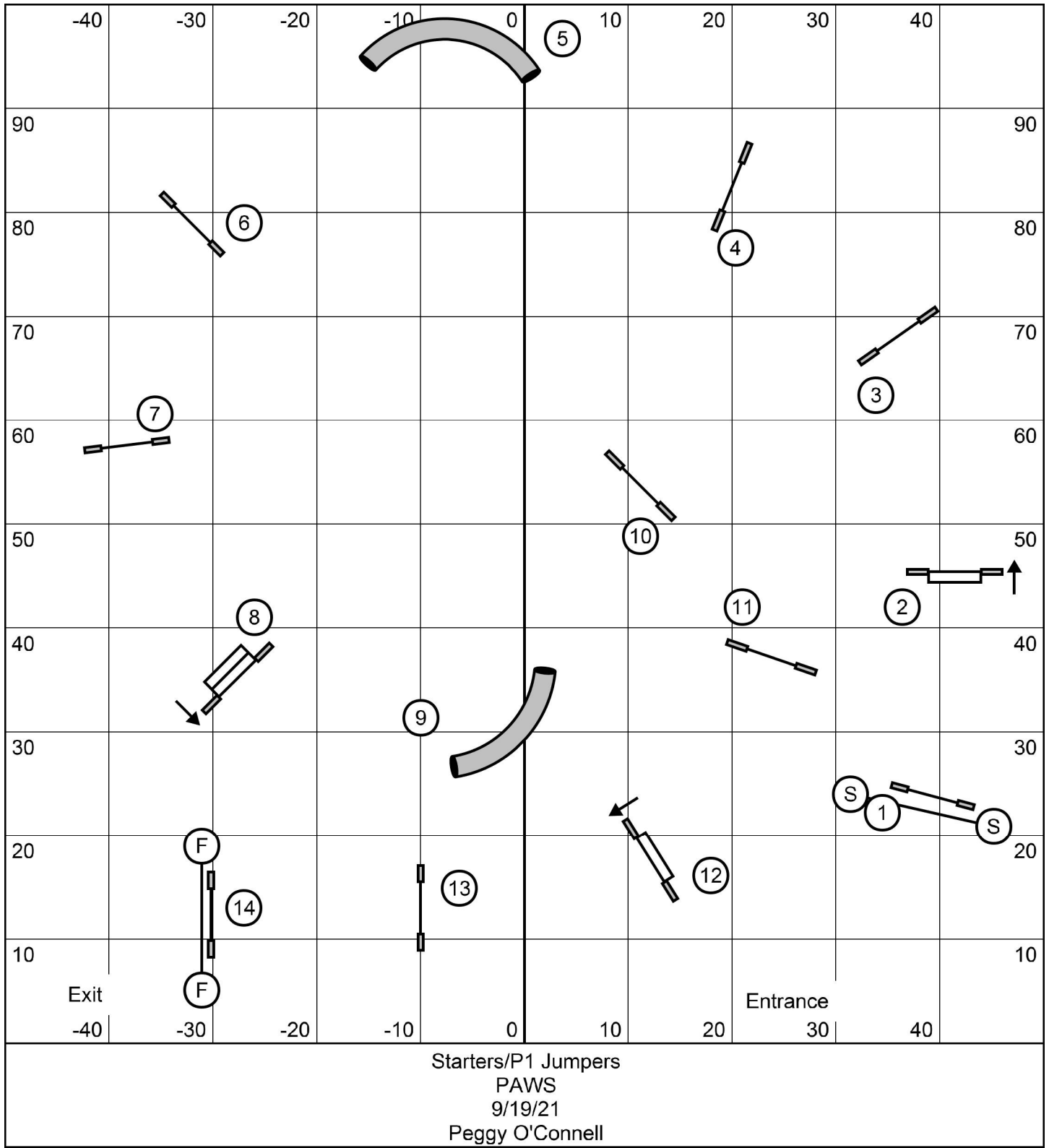
C20/22/24 - 50 s  
 C14/16 - 52 s  
 C10/12- 54 s  
 Perf +1 s





Advanced/P2 Jumpers  
 PAWS  
 9/19/21  
 Peggy O'Connell





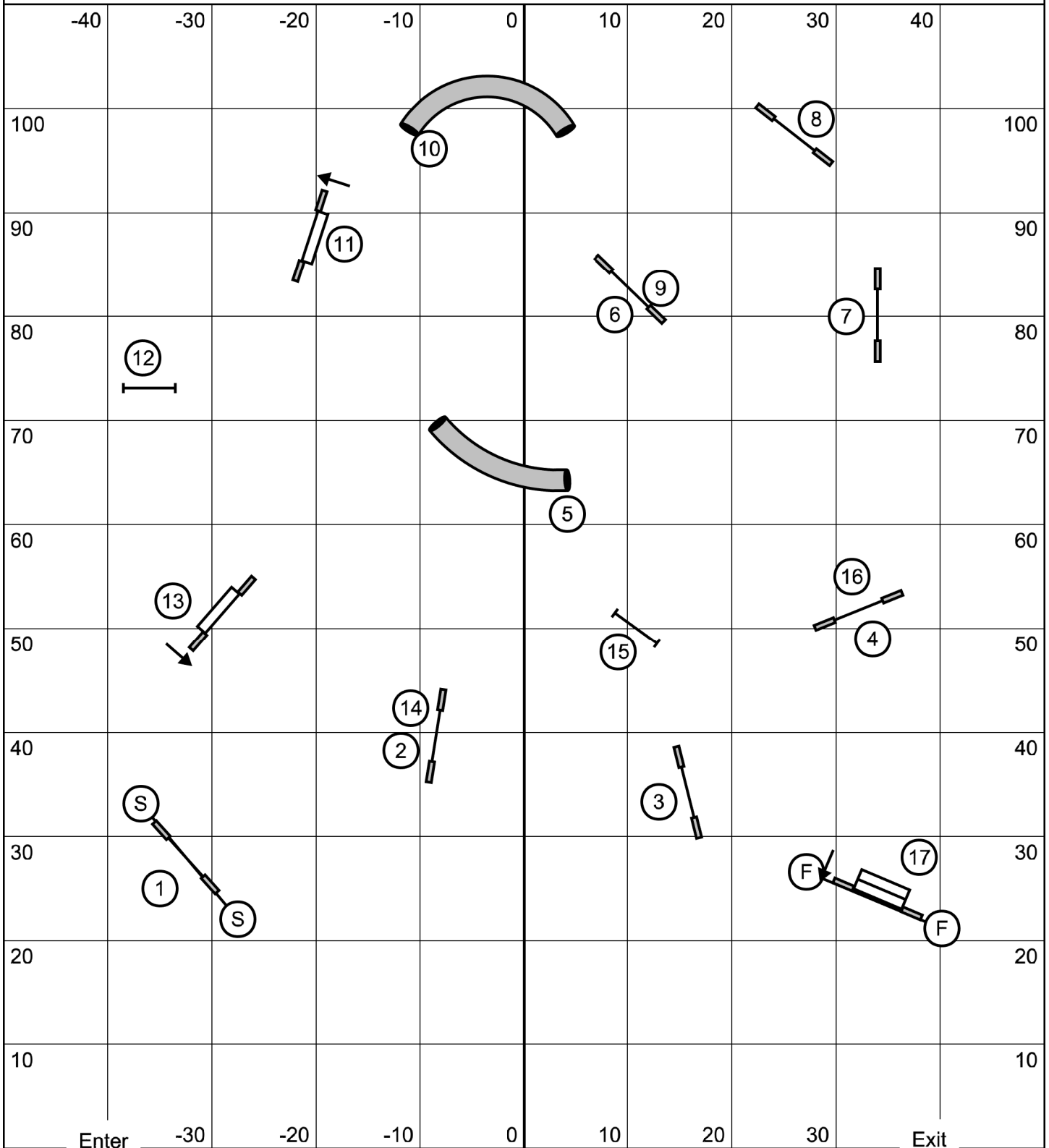


# Masters/P3/V Jumpers

Sunday, Sept. 19, 2021

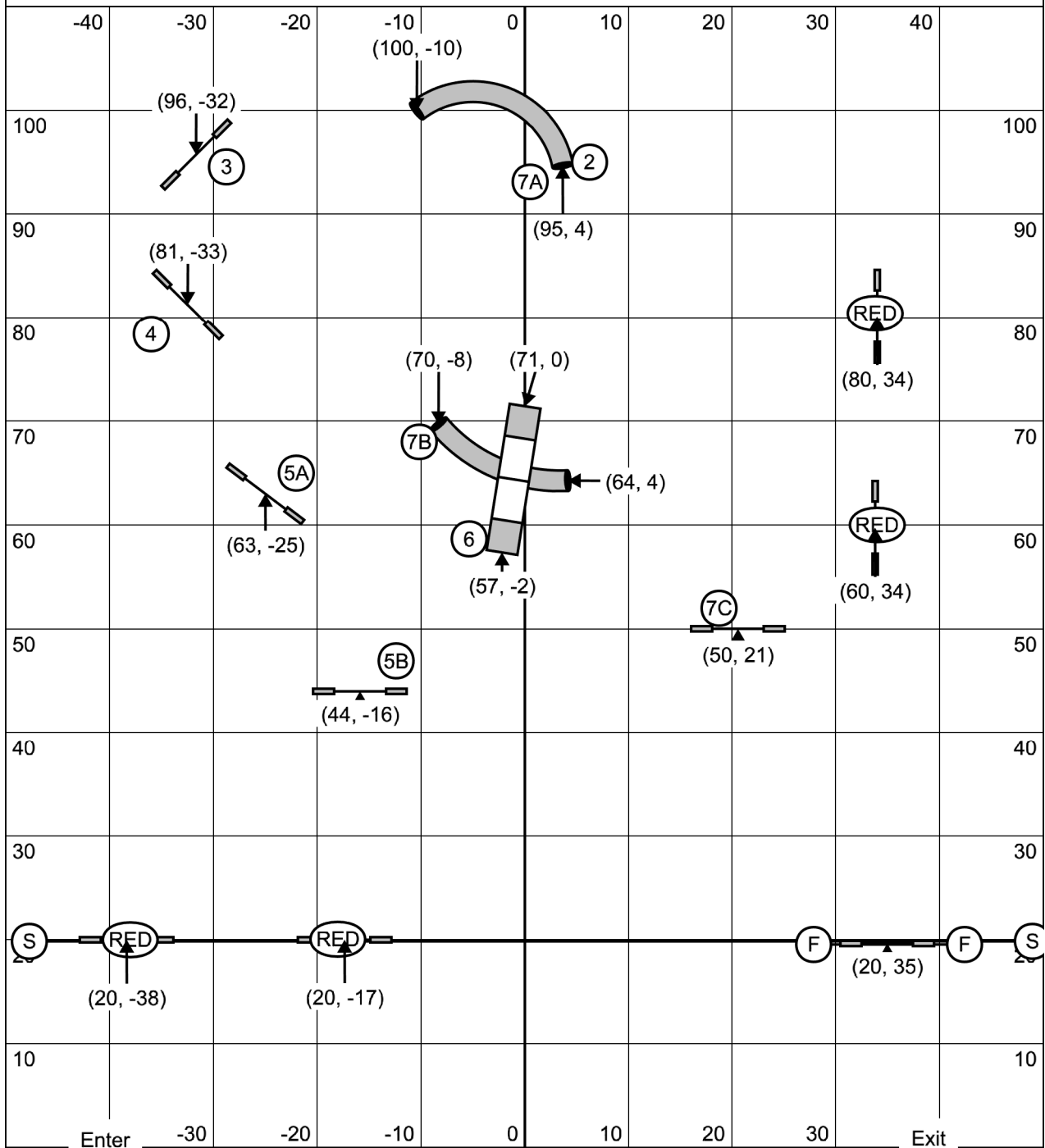
Playing Agility With Style

Rita Browning, judge



# Masters/P3/V Snooker

Sunday, Sept. 19, 2021    Playing Agility With Style    Rita Browning, judge



**3 or 4 reds may be attempted.** All obstacles are bi-directional in opening. (Note that obstacle taken prior to or after #2/7A tunnel determines value in the opening.) If error occurs in opening combo, complete for 0 pt & keep playing. Obstacles must be performed as marked in closing. Begin behind start line and take finish jump for time.

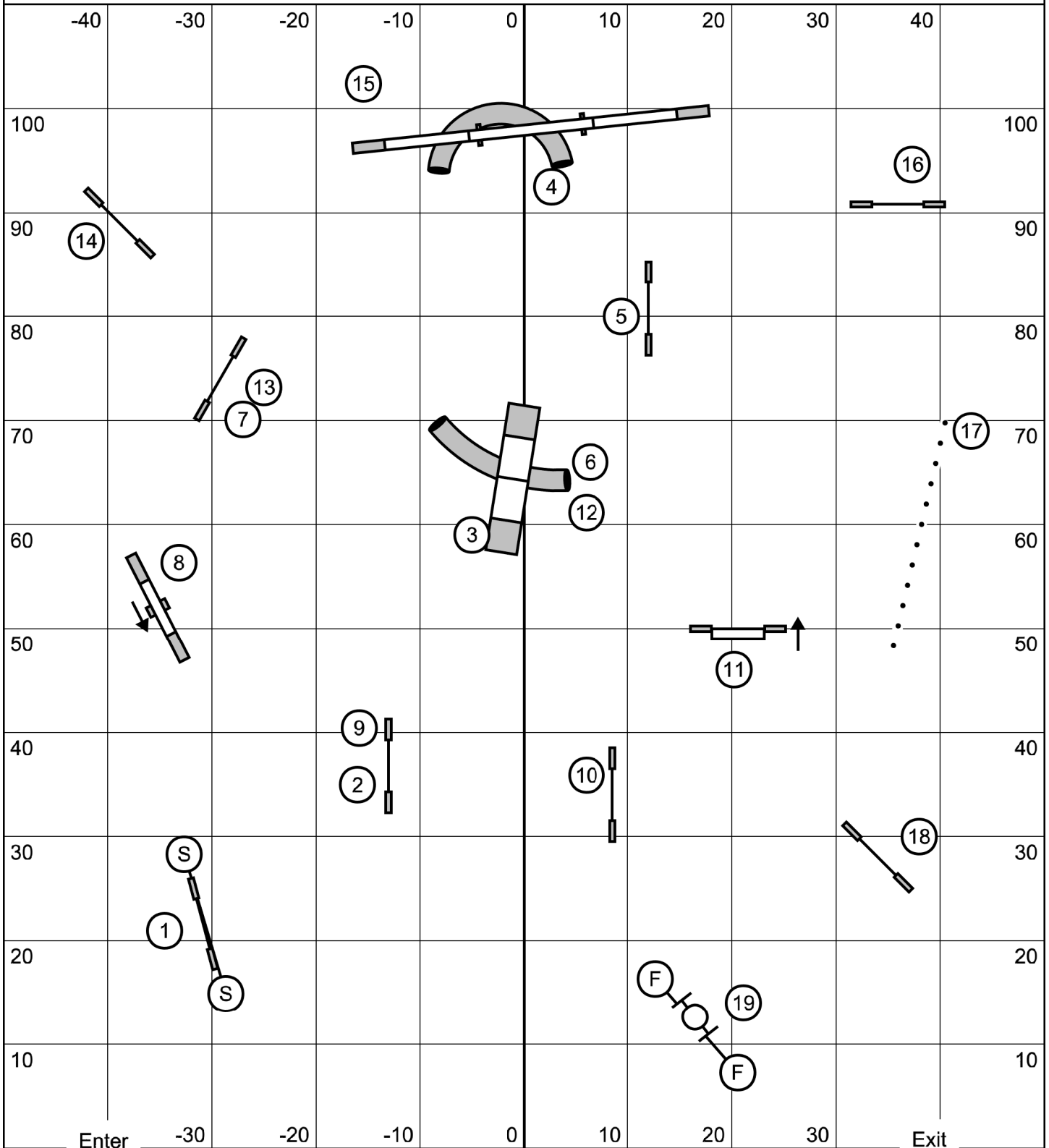
Ch 24/22/20 = 50 sec      Perf 20/16/14 = 52 sec    Vet = +4 sec  
 16/14 = 52 sec            12 = 54 sec  
 12/10 = 54 sec            8 = 56 sec

# Masters/P3/V Standard

Sunday, Sept. 19, 2021

Playing Agility With Style

Rita Browning, judge



Enter

Exit

Enter after #14

3-2