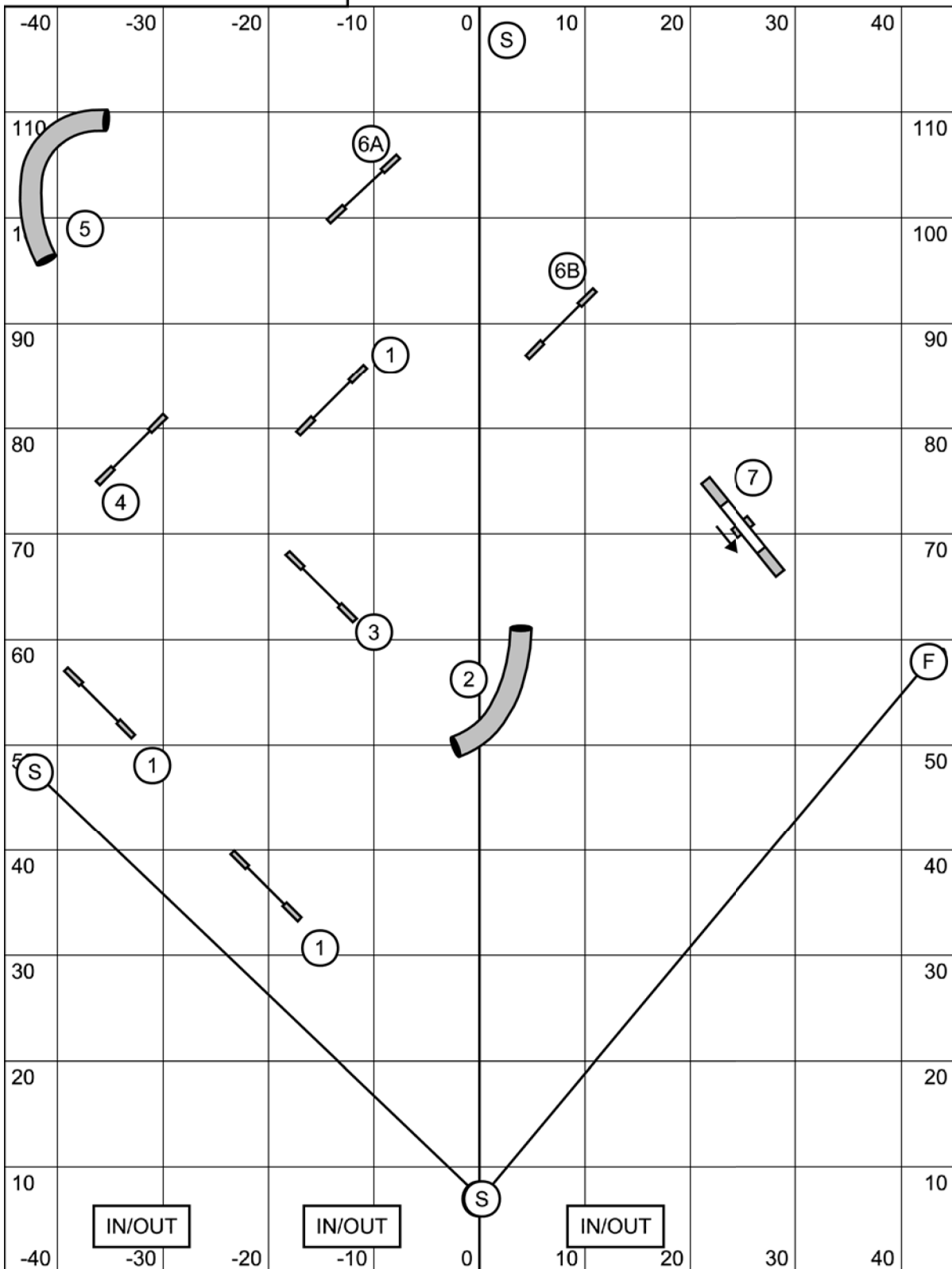


Riverside K9 - North Kingstown, RI  
 Judge - Frances Hannan  
 Sat September 11th, 2021

### Starters/PI/Intro Snooker

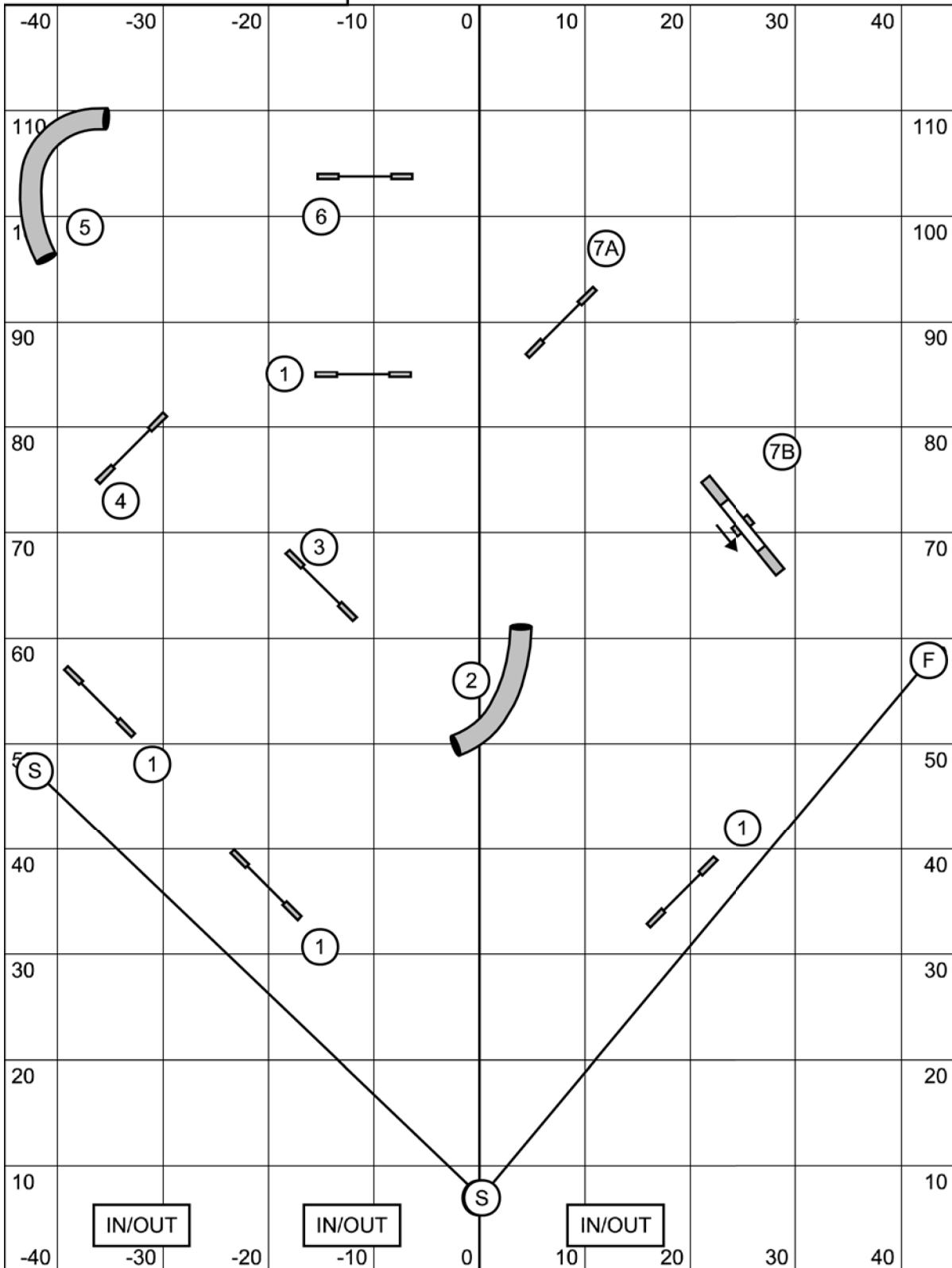


C 24/22/20 = 52s  
 C 16/14 = 54s  
 C 10 = 56s  
 Performance + 2s

Modified Standard - 3 Reds  
 Opening - all bidirectional  
 Closing - as numbered (2&3 bidirectional)  
 Repeated obstacles in combo = 0 pts

Riverside K9 - North Kingstown, RI  
 Judge - Frances Hannan  
 Sat September 11th, 2021

## Advanced/PII Snooker

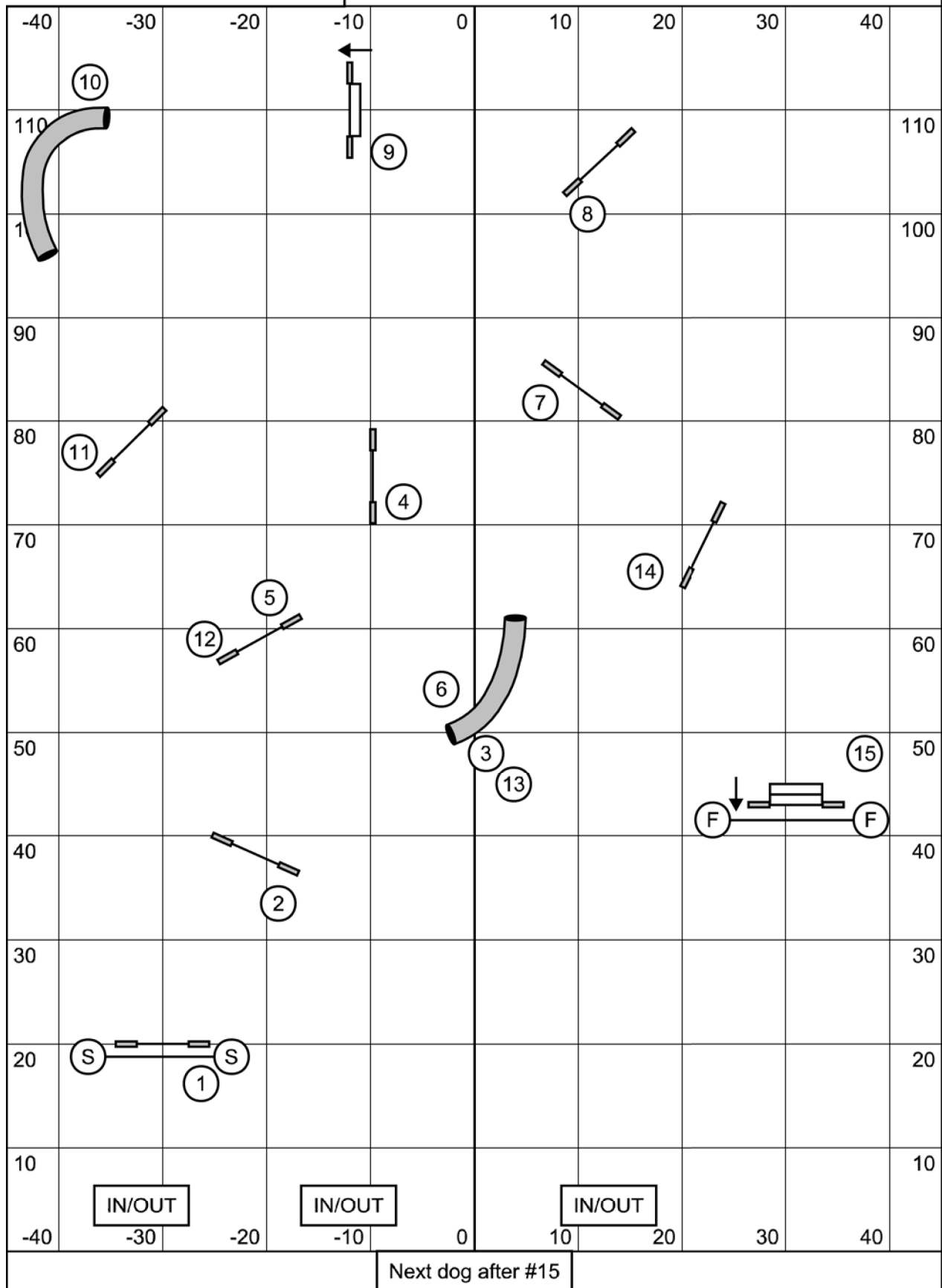


C 24/22/20 = 52s  
 C 16/14 = 54s  
 C 10 - 56s  
 Performance + 2s

Modified Standard - 3 or 4 Reds  
 Opening - all bidirectional  
 Closing - as numbered (2 bidirectional)  
 Repeated obstacles in combo = 0 pts

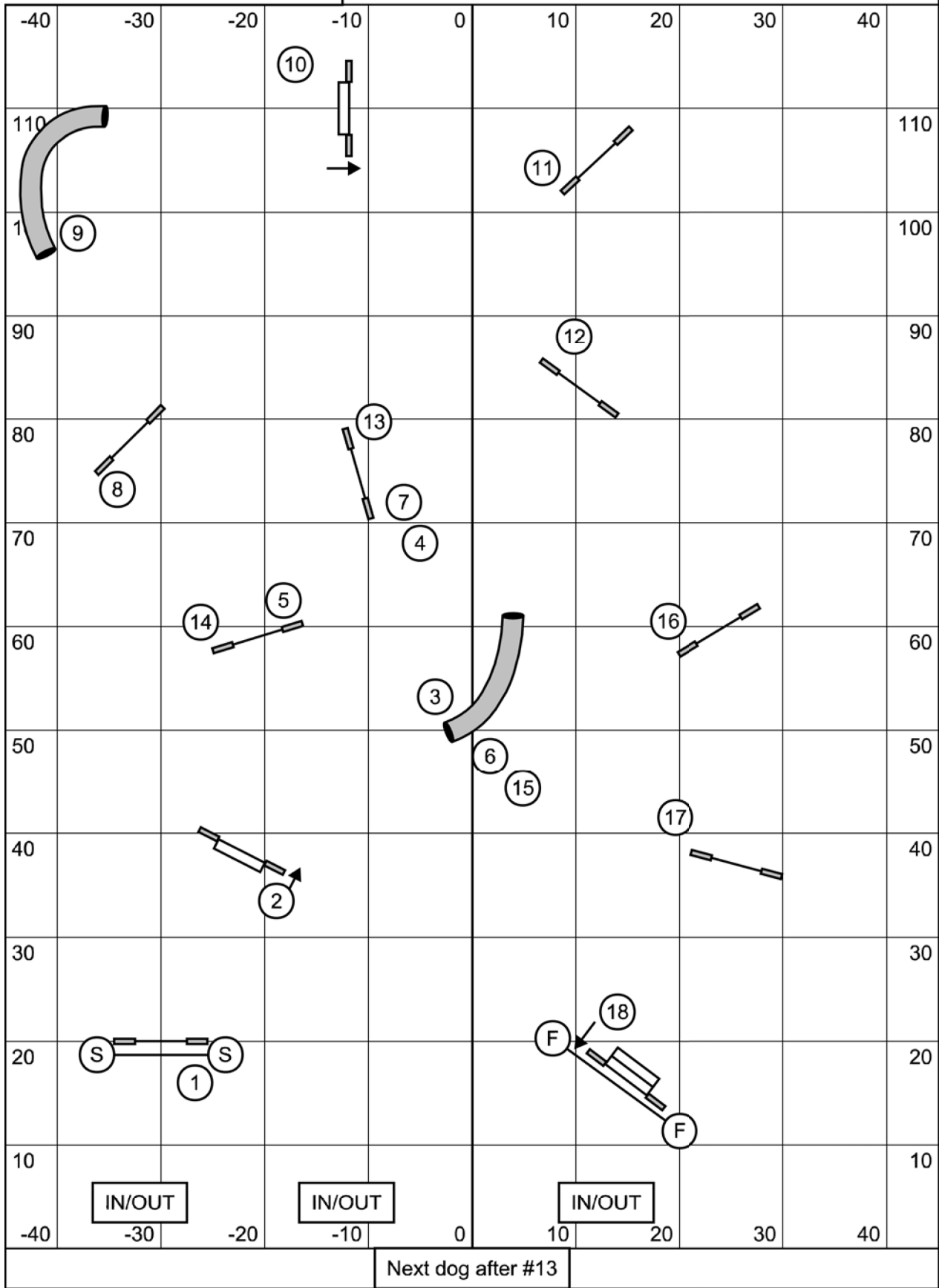
Riverside K9 - North Kingstown, RI  
 Judge - Frances Hannan  
 Sat September 11th, 2021

### Starters/PI/Intro Jumpers



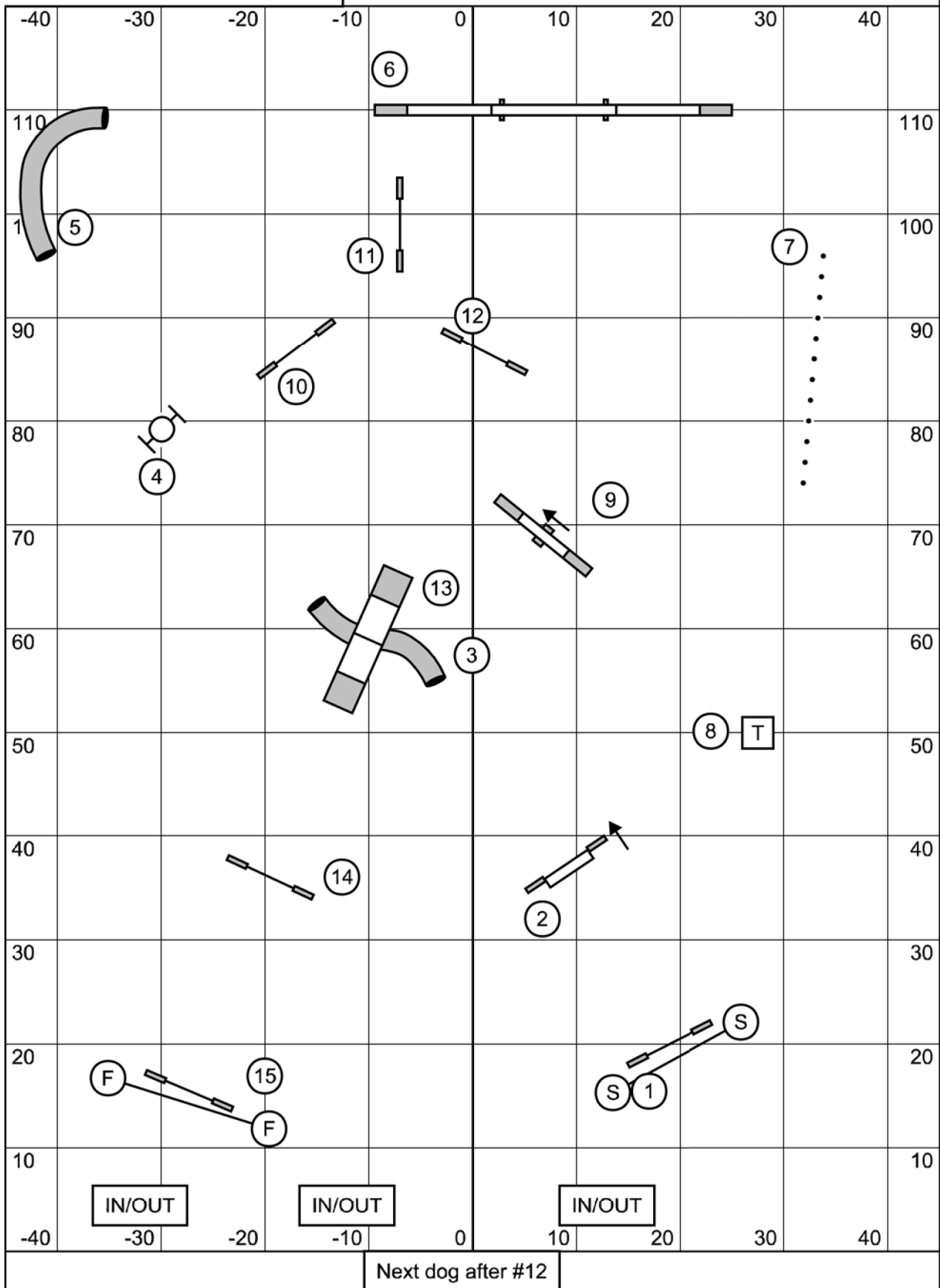
Riverside K9 - North Kingstown, RI  
 Judge - Frances Hannan  
 Sat September 11th, 2021

### Advanced/PII Jumpers



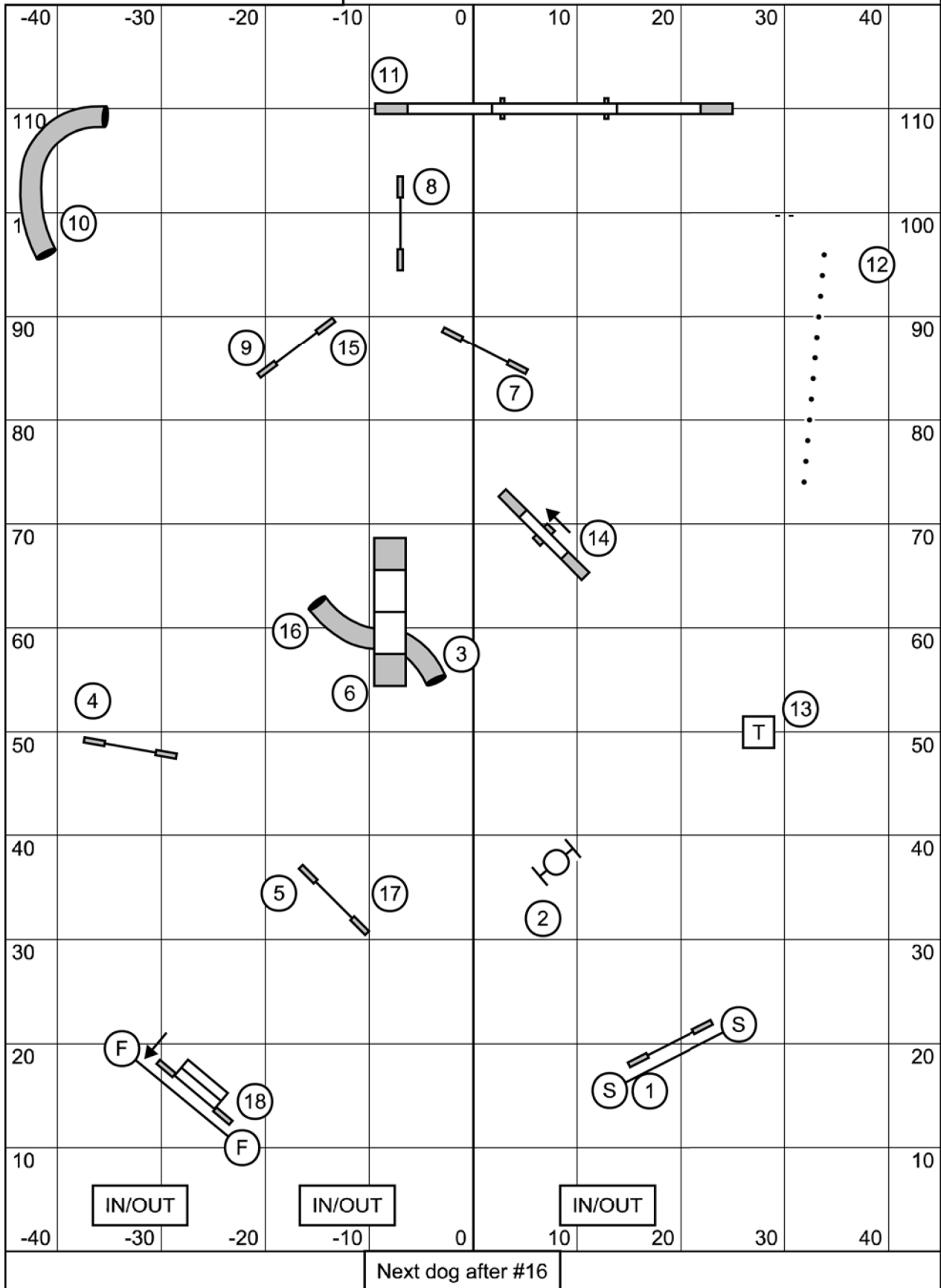
Riverside K9 - North Kingstown, RI  
 Judge - Frances Hannan  
 Sat September 11th, 2021

### Starters/PI/Intro Standard



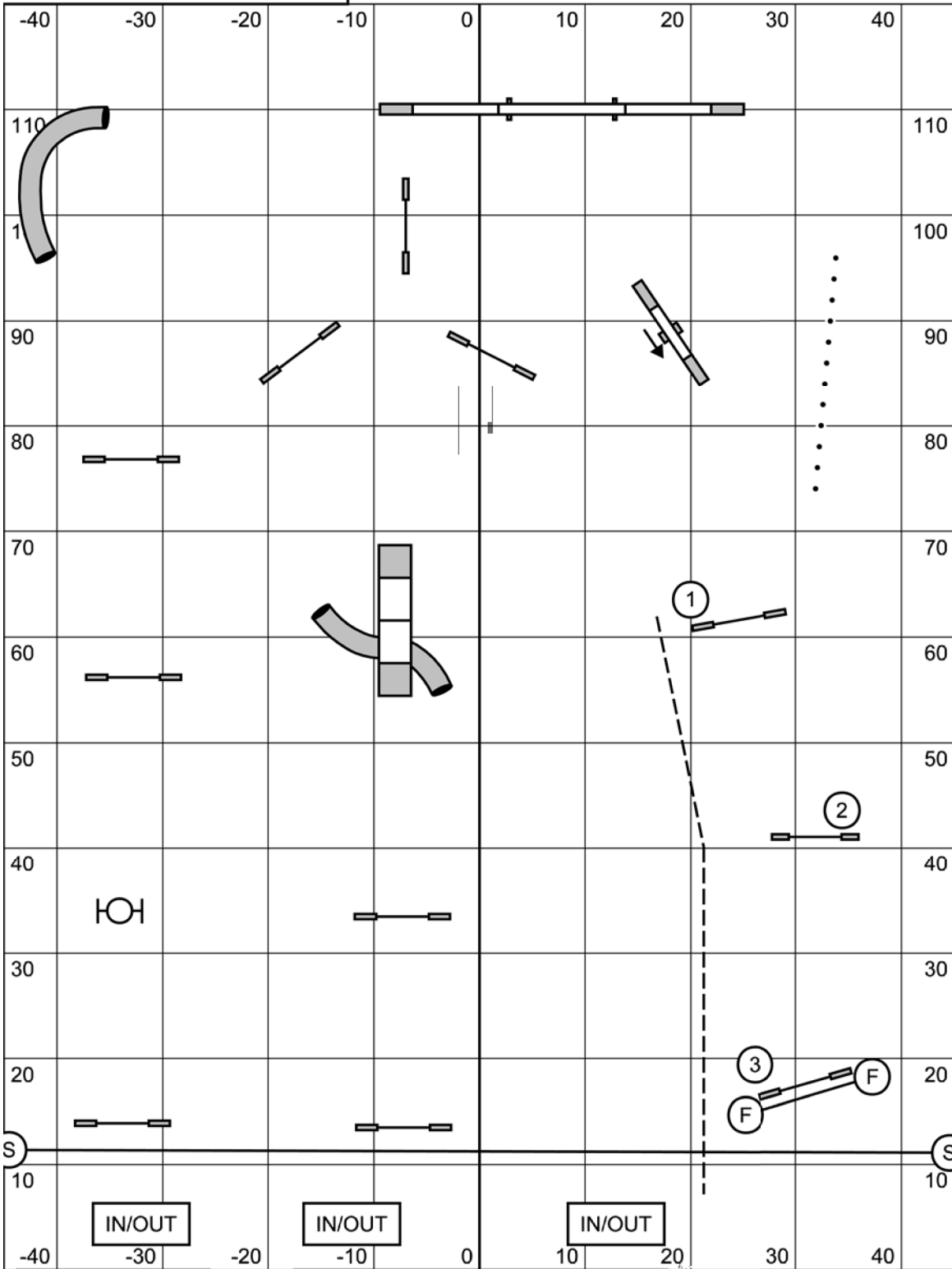
Riverside K9 - North Kingstown, RI  
Judge - Frances Hannan  
Sat September 11th, 2021

### Advanced/PII Standard



Riverside K9 - North Kingstown, RI  
 Judge - Frances Hannan  
 Sat September 11th, 2021

## Starters/PI/Intro Gamblers

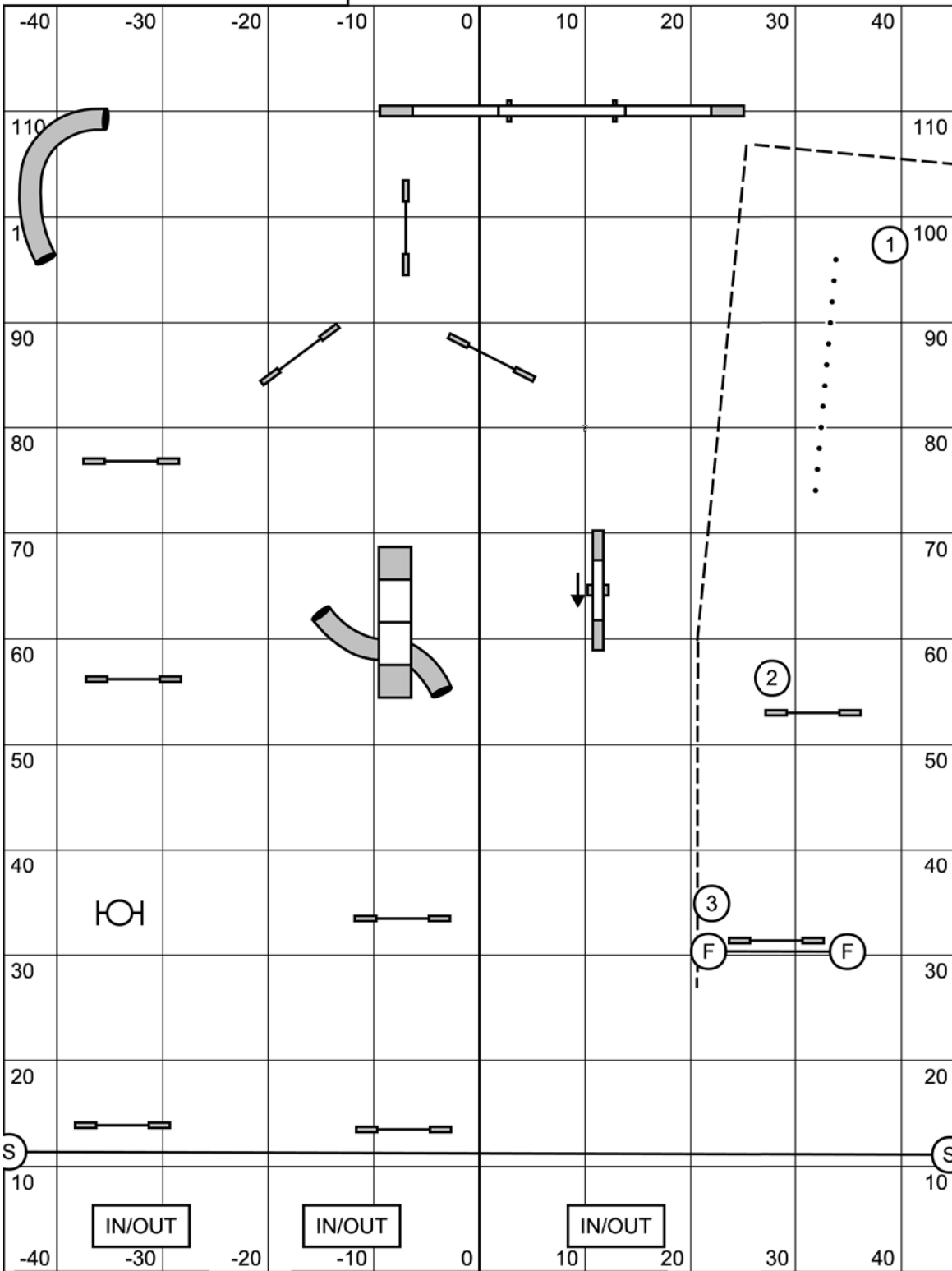


Opening = 25s  
 Closing period:  
 C 24/22/20 = 13s  
 C 16/14 = 14s  
 C 10 = 15s  
 Performance + 1s

Point system 1,2,3,5  
 Dogwalk = 5  
 Minimum = 13  
 Joker = 20  
 Back to back & contact to contact OK

Riverside K9 - North Kingstown, RI  
 Judge - Frances Hannan  
 Sat September 11th, 2021

### Advanced/PII Gamblers



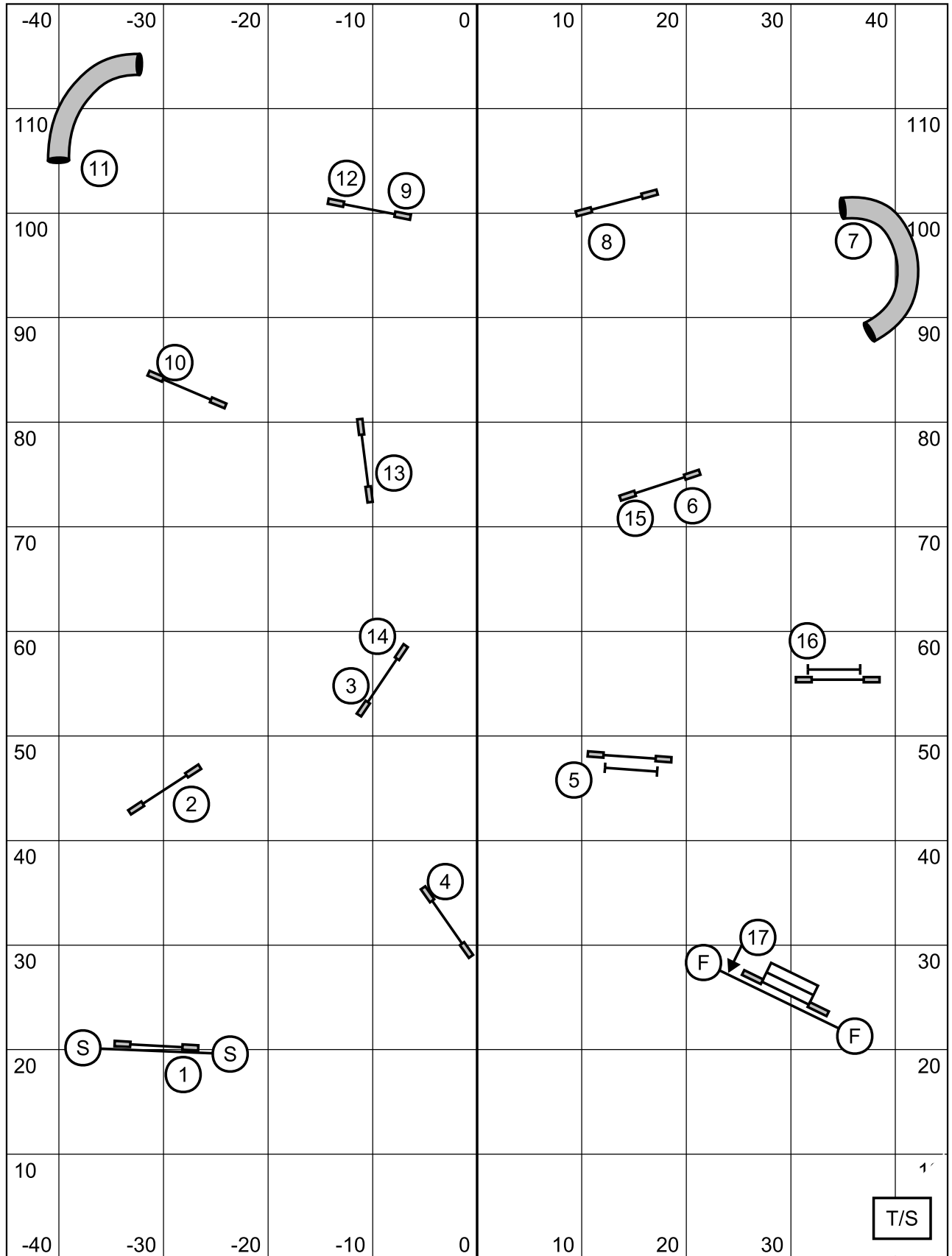
Opening = 25s  
 Closing period:  
 C 24/22/20 = 18s  
 C 16/14 = 19s  
 C 10 = 20s  
 Performance + 2s

Point system 1,2,3,5  
 Dogwalk = 5  
 Minimum = 13  
 Joker = 20  
 Back to back & contact to contact OK



Riverside Canine Center USDAA  
 North Kingstown, RI  
 Ashley Anderson  
 Sept 11, 2021

# Masters/P3/Vet Jumpers

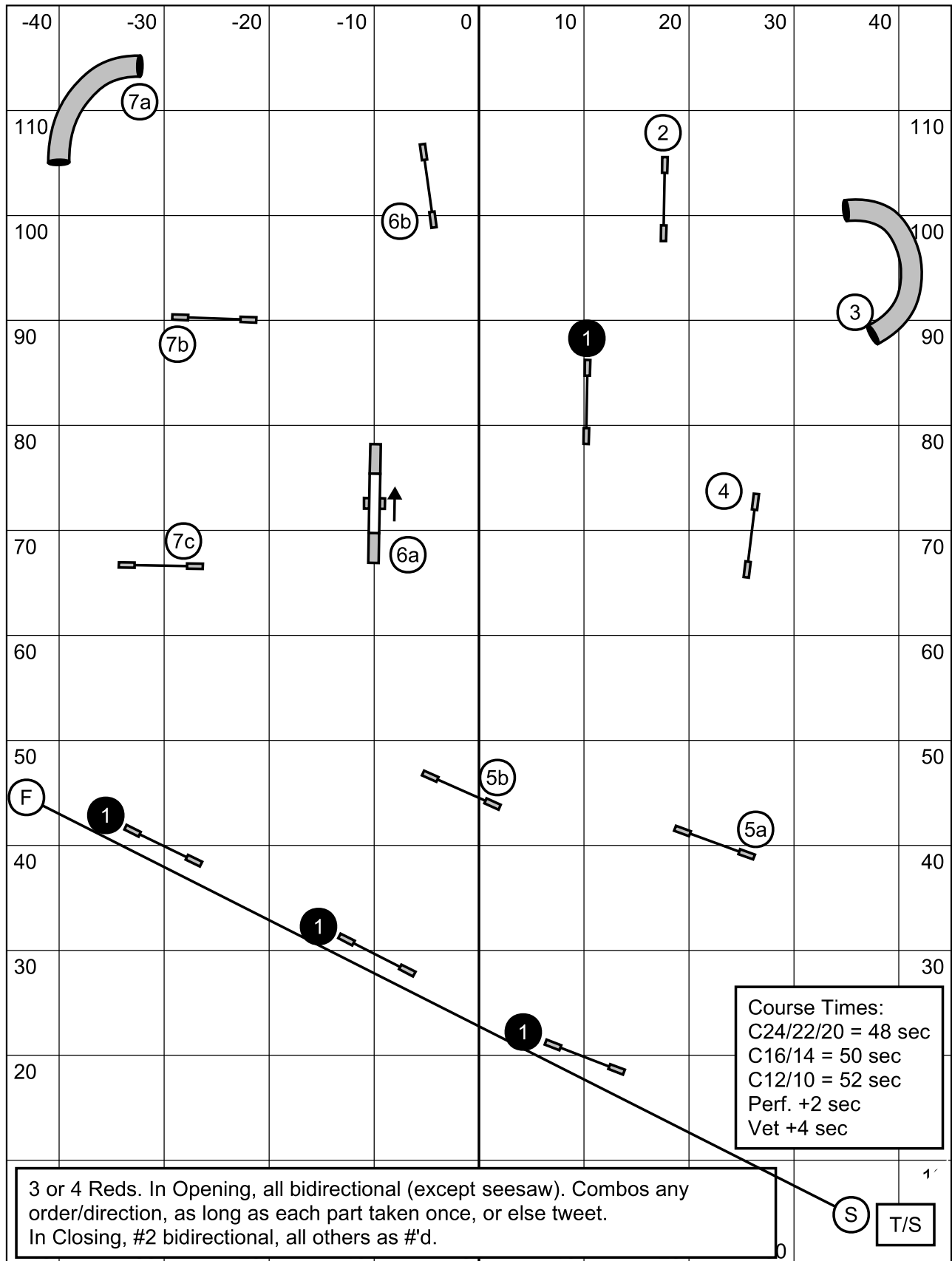


Enter / Exit

Enter / Exit

Riverside Canine Center USDAA  
 North Kingstown, RI  
 Ashley Anderson  
 Sept 11, 2021

# Masters/P3/Vet Snooker



3 or 4 Reds. In Opening, all bidirectional (except seesaw). Combos any order/direction, as long as each part taken once, or else tweet. In Closing, #2 bidirectional, all others as #d.

Course Times:  
 C24/22/20 = 48 sec  
 C16/14 = 50 sec  
 C12/10 = 52 sec  
 Perf. +2 sec  
 Vet +4 sec

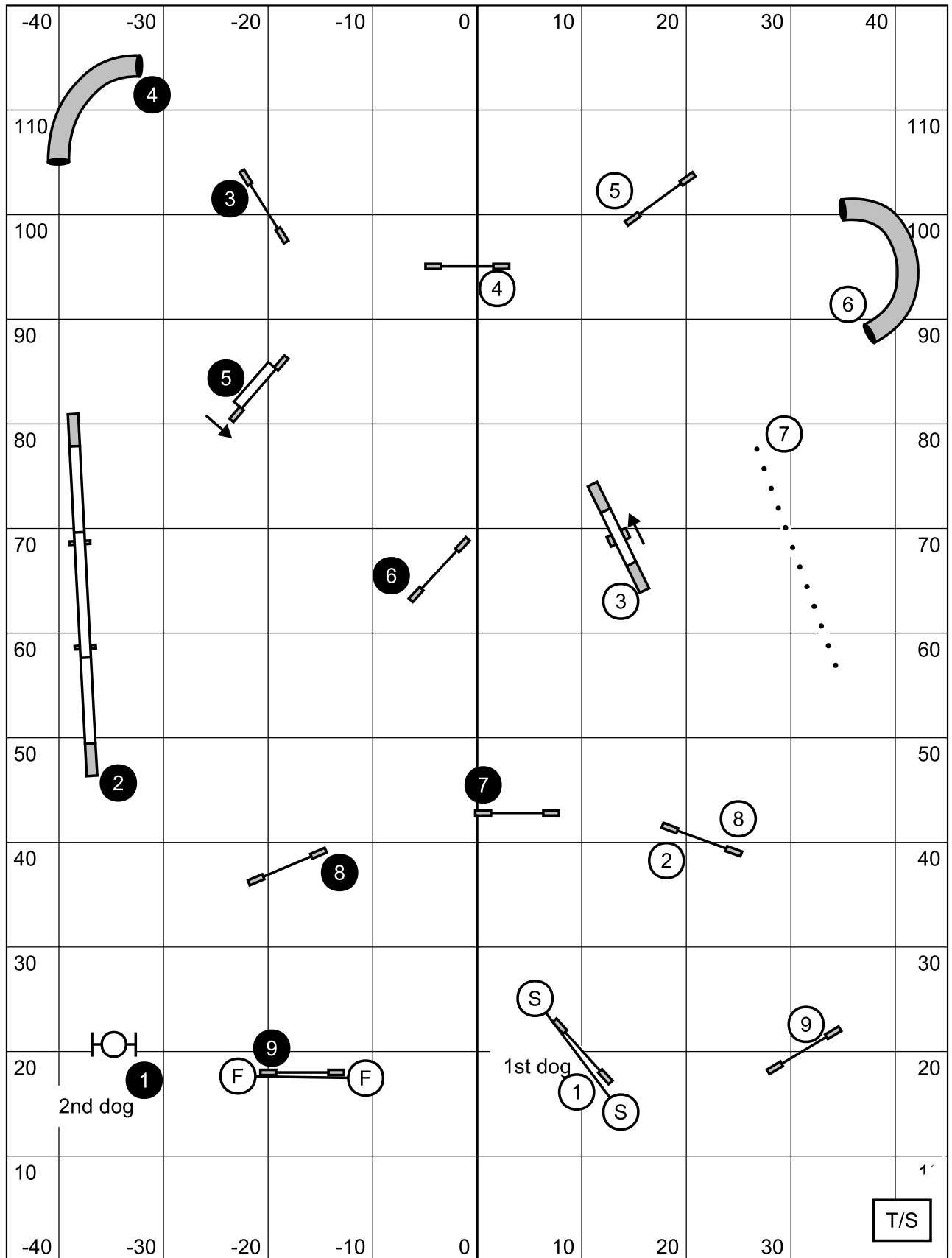
Enter / Exit

Enter / Exit

S T/S

Riverside Canine Center USDAA  
 North Kingstown, RI  
 Ashley Anderson  
 Sept 11, 2021

# Combined Pairs Relay

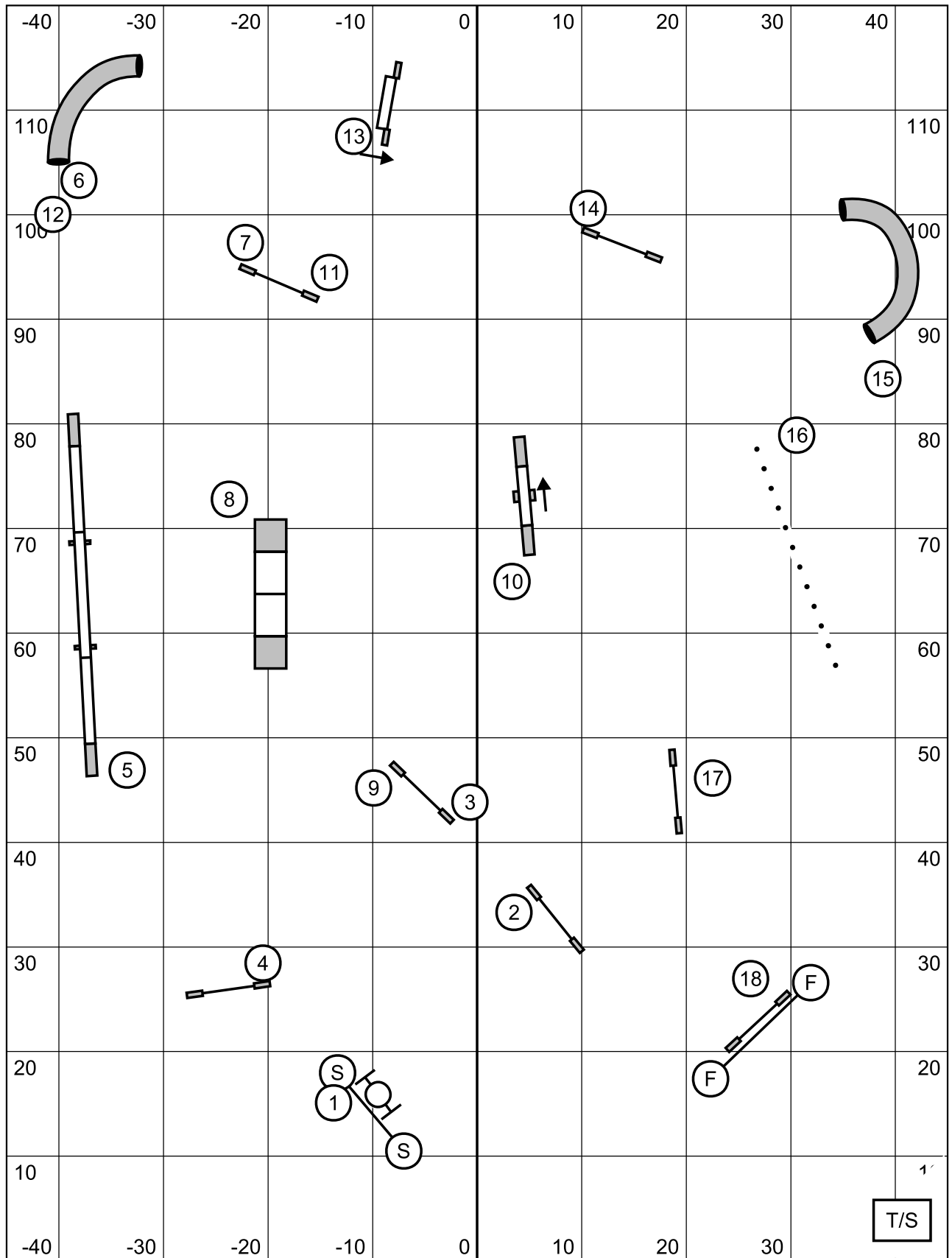


Enter / Exit

Enter / Exit

Riverside Canine Center USDAA  
North Kingstown, RI  
Ashley Anderson  
Sept 11, 2021

# Masters/P3/Vet Standard



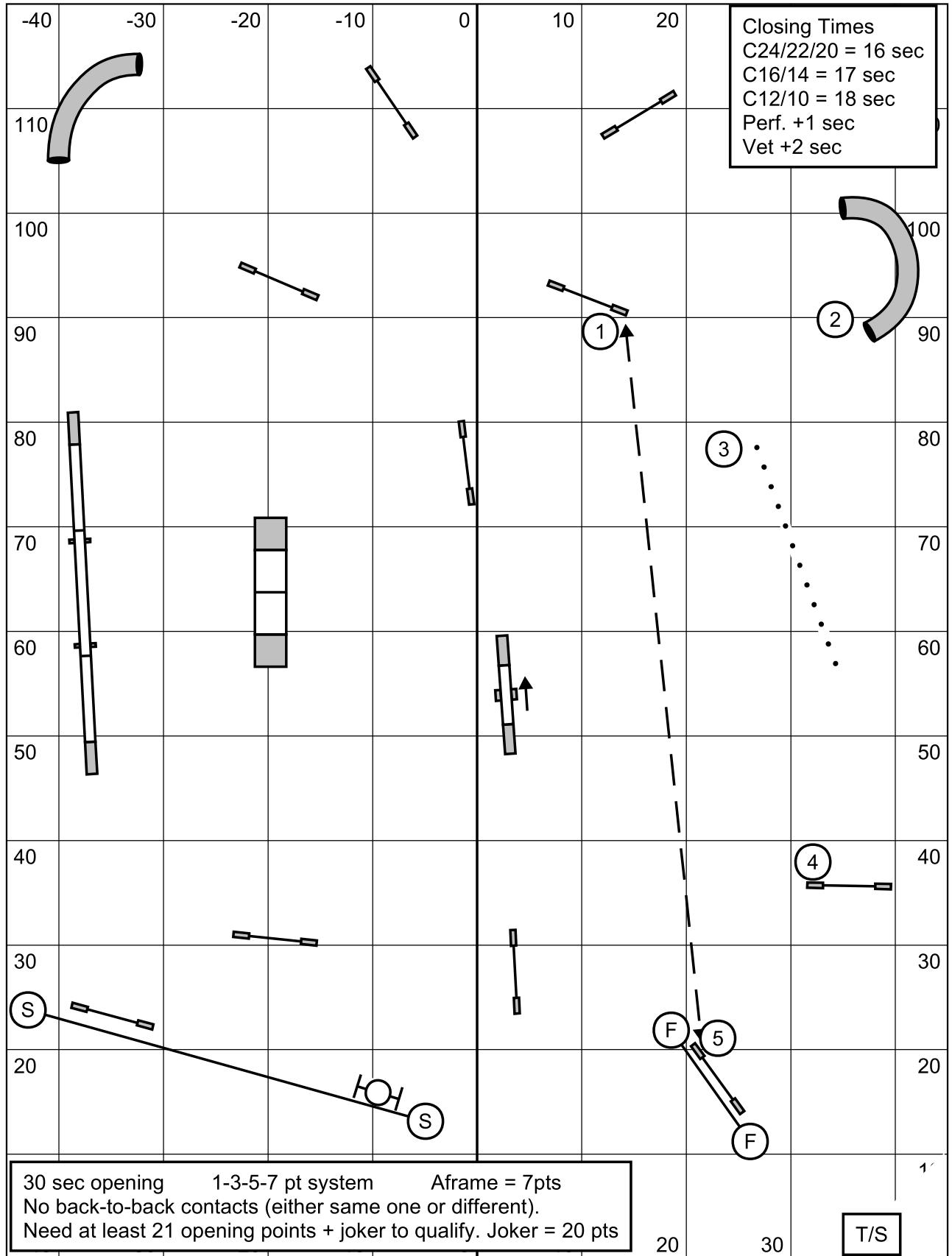
Enter / Exit

Enter / Exit

T/S

Riverside Canine Center USDAA  
 North Kingstown, RI  
 Ashley Anderson  
 Sept 11, 2021

# Masters/P3/Vet Gamblers



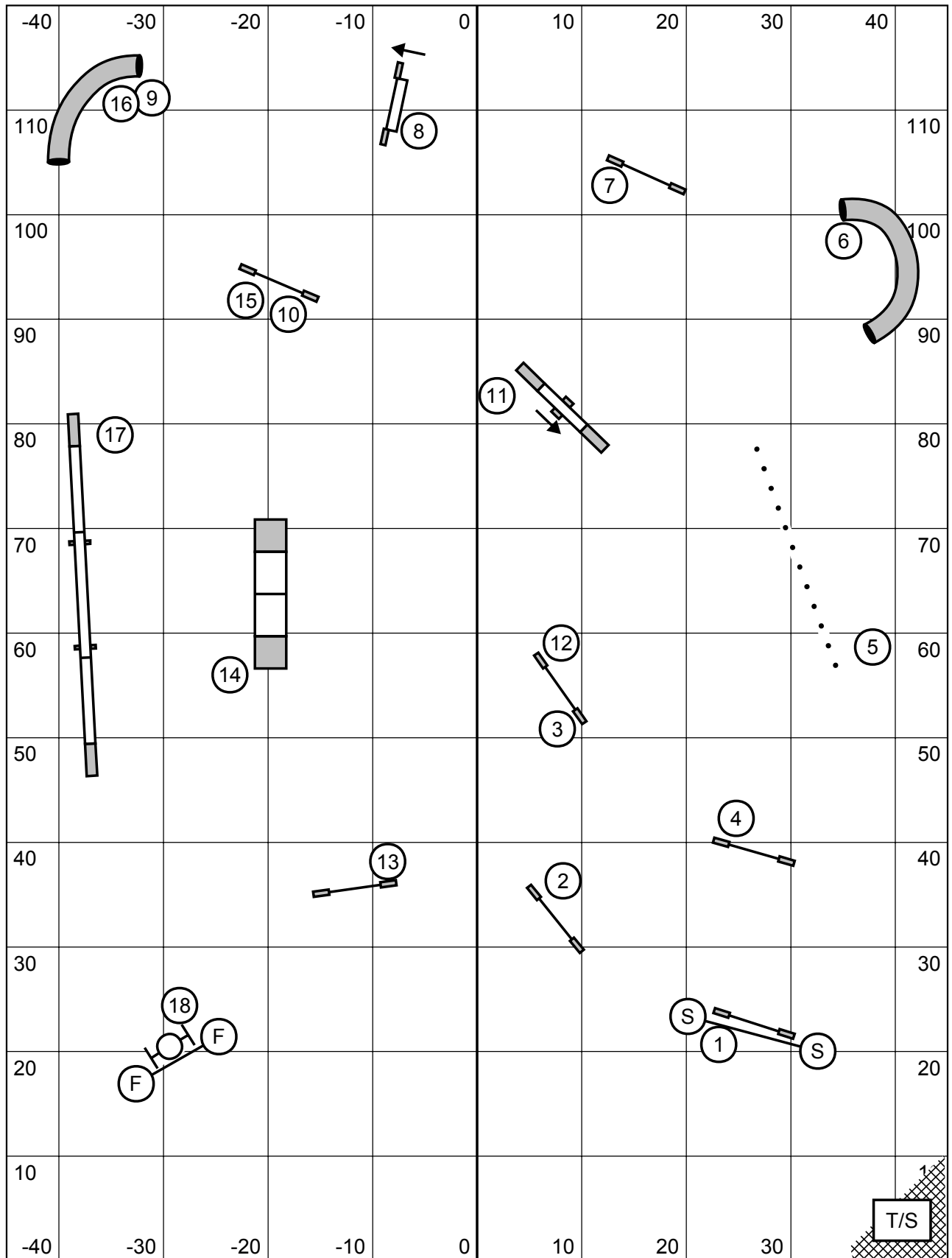
Enter / Exit

Enter / Exit

T/S

Riverside Canine Center USDA  
 North Kingstown, RI  
 Ashley Anderson  
 Sept 11, 2021

# Grand Prix / Perf. Grand Prix



Enter / Exit

Enter / Exit