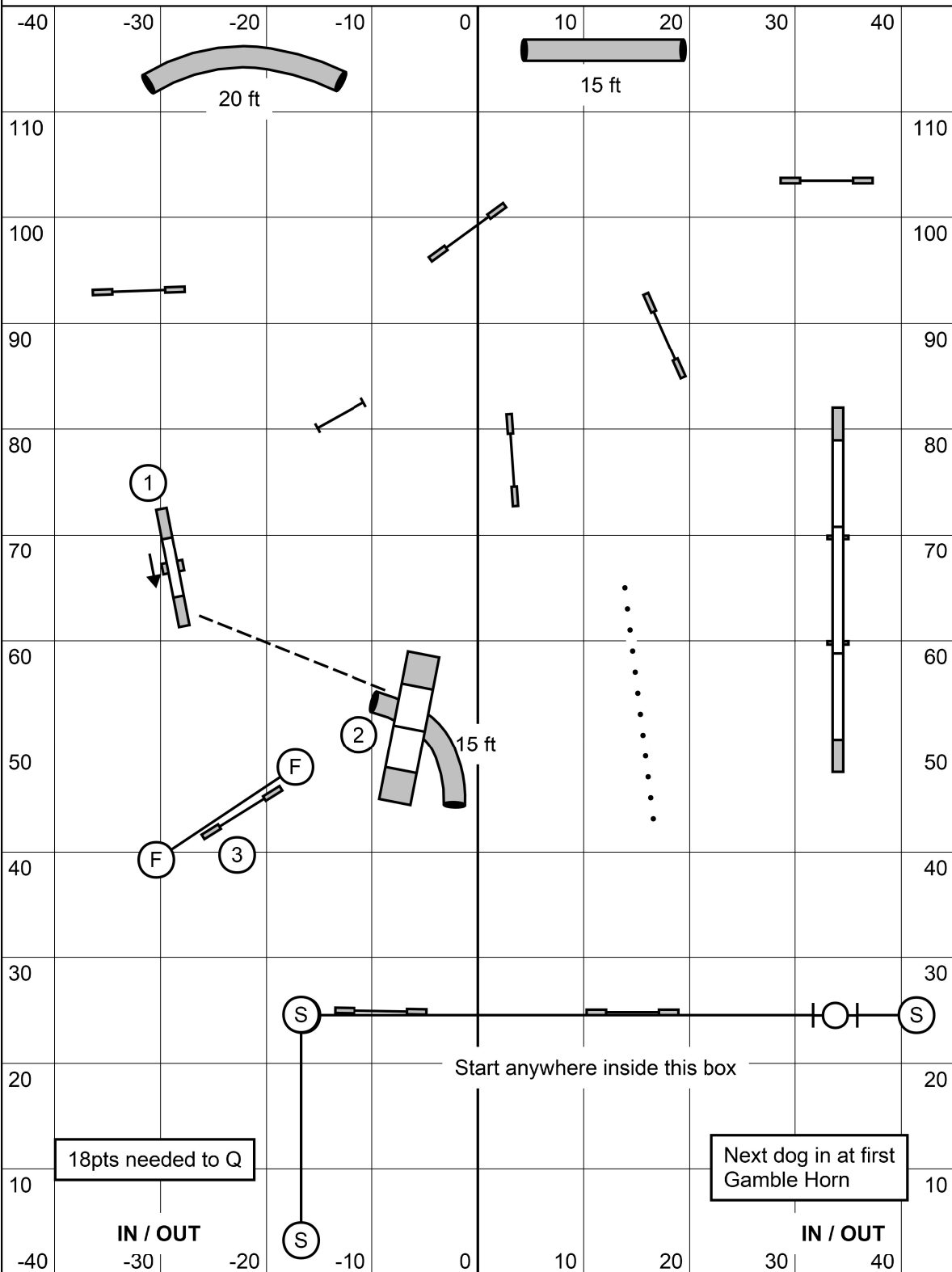


**STARTER/P1 GAMBLERS - Sat, Aug.17,2019** JUDGE: Patty Drom



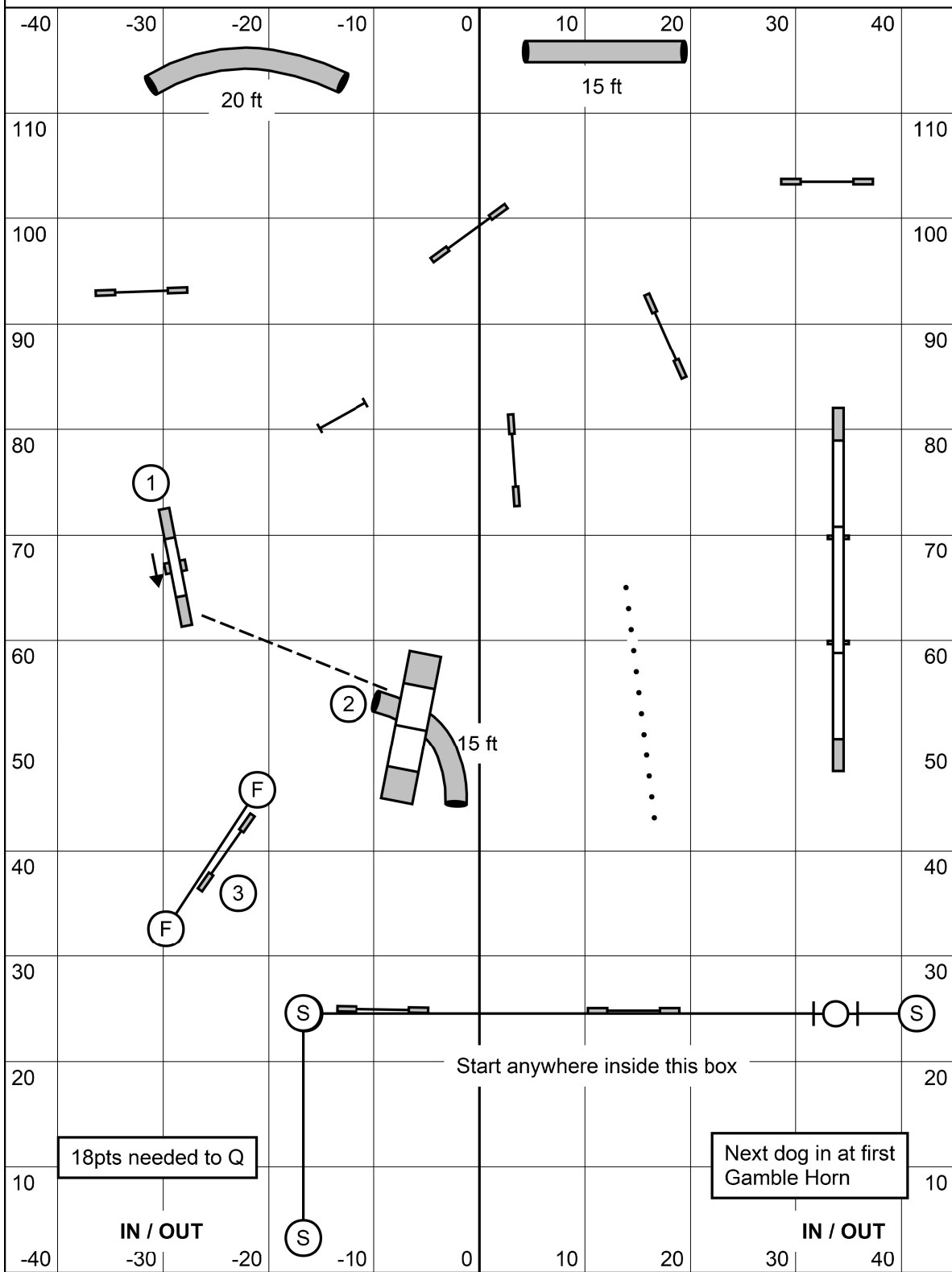
**PAWS REGIONAL CHAMPIONSHIP - AUGUST 16-18, 2019**

Wide World of Indoor Sports South, N. Kingstown, RI

BRIEFING: 1-3-5-7 point system where Weaves=7; Contacts=5; Tunnels/Tire=3; Jumps=1. B2B Contacts okay. Contact to Contact NOT okay.

TIMES: Opening=25 sec for all. **GAMBLE TIMES:** 20+=15; 14/16=16; 10=17. PF14/16/20=17; PF12=18; PF8=19.

**ADV / P2 GAMBLERS - Sat, Aug.17,2019 JUDGE: Patty Drom**



**PAWS REGIONAL CHAMPIONSHIP - AUGUST 16-18, 2019**

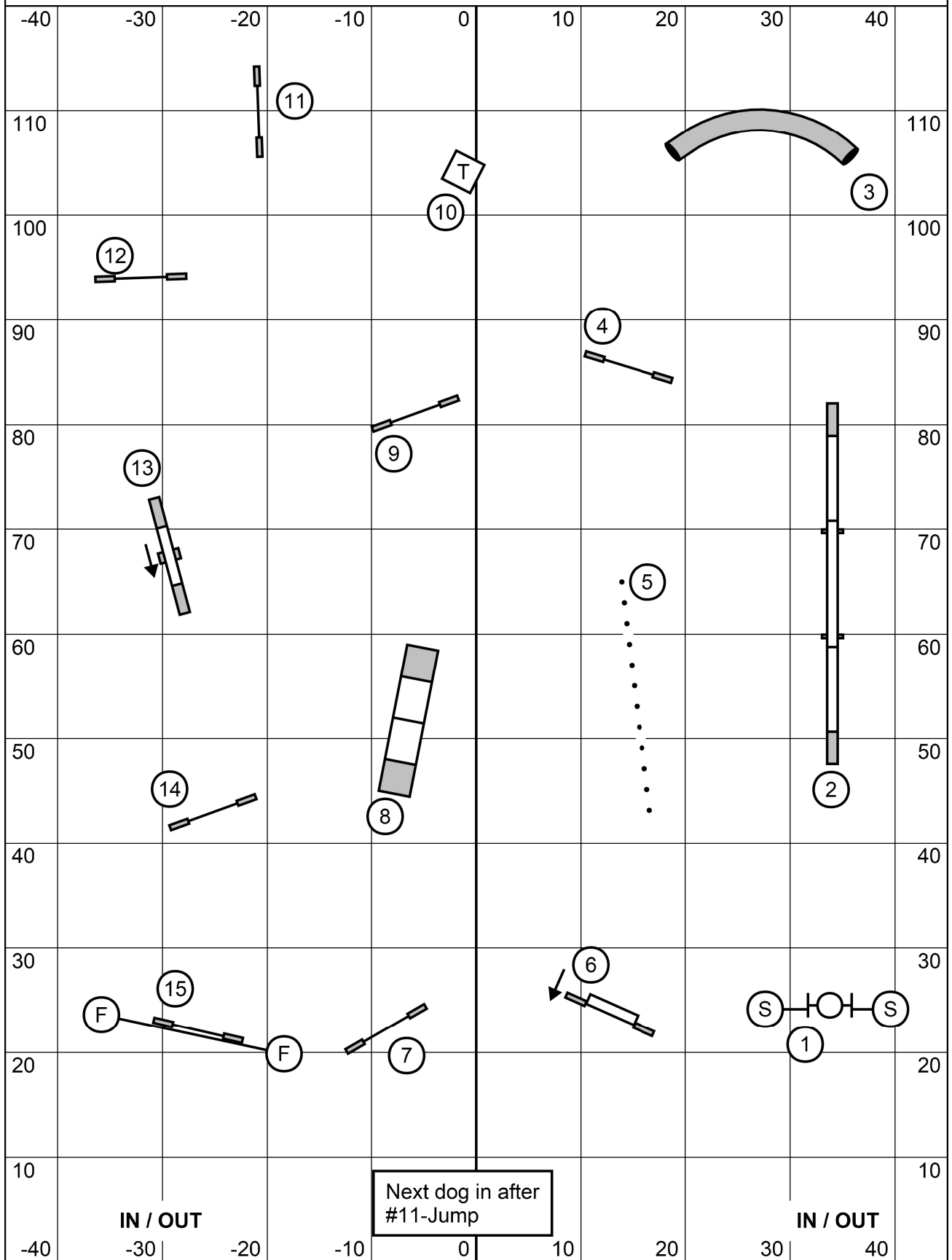
Wide World of Indoor Sports South, N. Kingstown, RI

BRIEFING: 1-3-5-7 point system where Weaves=7; Contacts=5; Tunnels/Tire=3; Jumps=1. B2B Contacts okay. Contact to Contact NOT okay.

TIMES: Opening=25 sec for all. **GAMBLE TIMES:** 20+=15; 14/16=16; 10=17. PF14/16/20=17; PF12=18; PF8=19.

**STARTER / P1 STANDARD - Sat, Aug.17,2019**

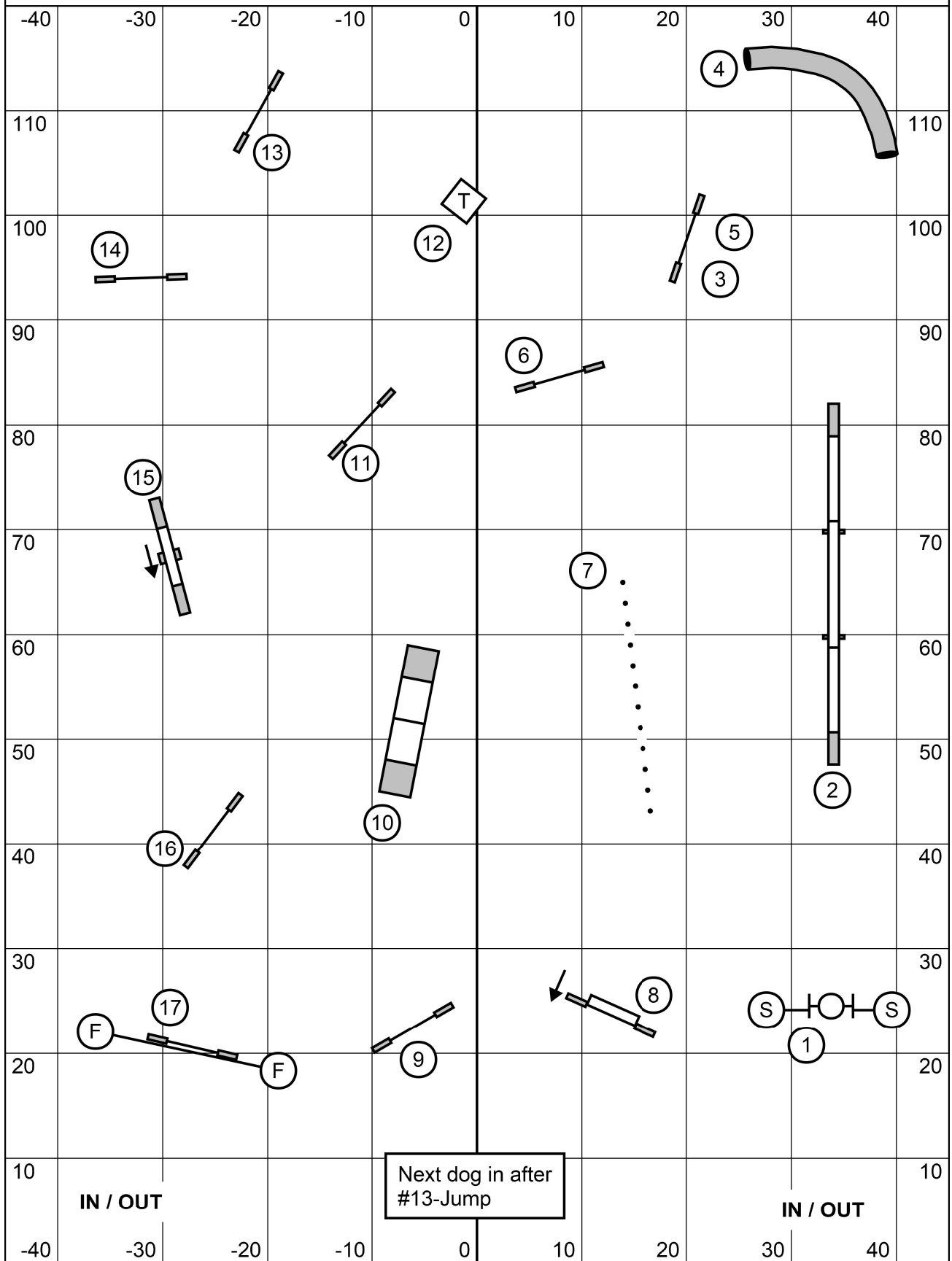
**JUDGE: Patty Drom**



**PAWS REGIONAL CHAMPIONSHIP - AUGUST 16-18, 2019**  
Wide World of Indoor Sports South, N. Kingstown, RI

ADV / P2 STANDARD - Sat, Aug.17,2019

JUDGE: Patty Drom



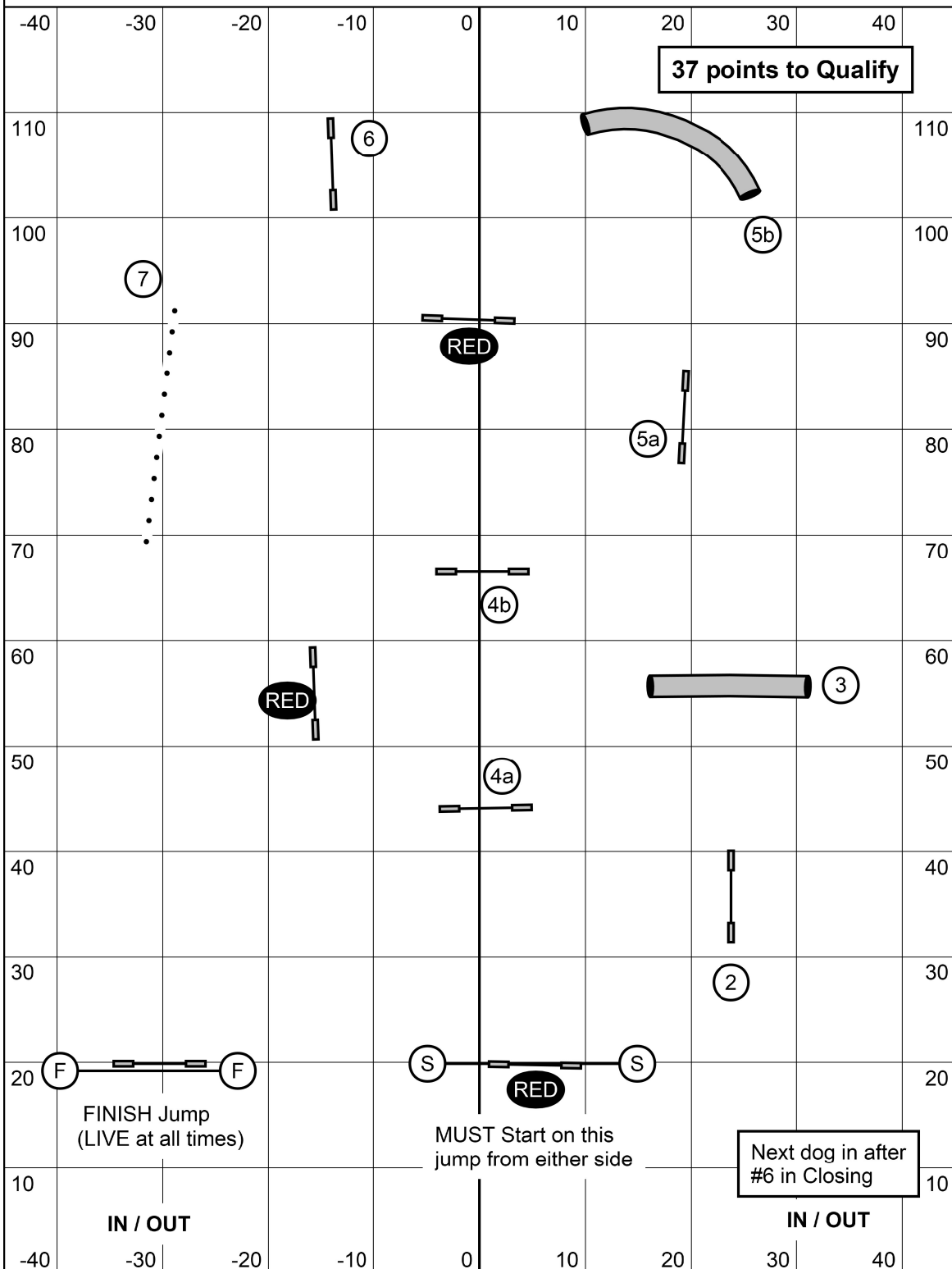
PAWS REGIONAL CHAMPIONSHIP - AUGUST 16-18, 2019

Wide World of Indoor Sports South, N. Kingstown, RI



**STARTER / P1 SNOOKER - Sat, Aug.17,2019**

JUDGE: Patty Drom



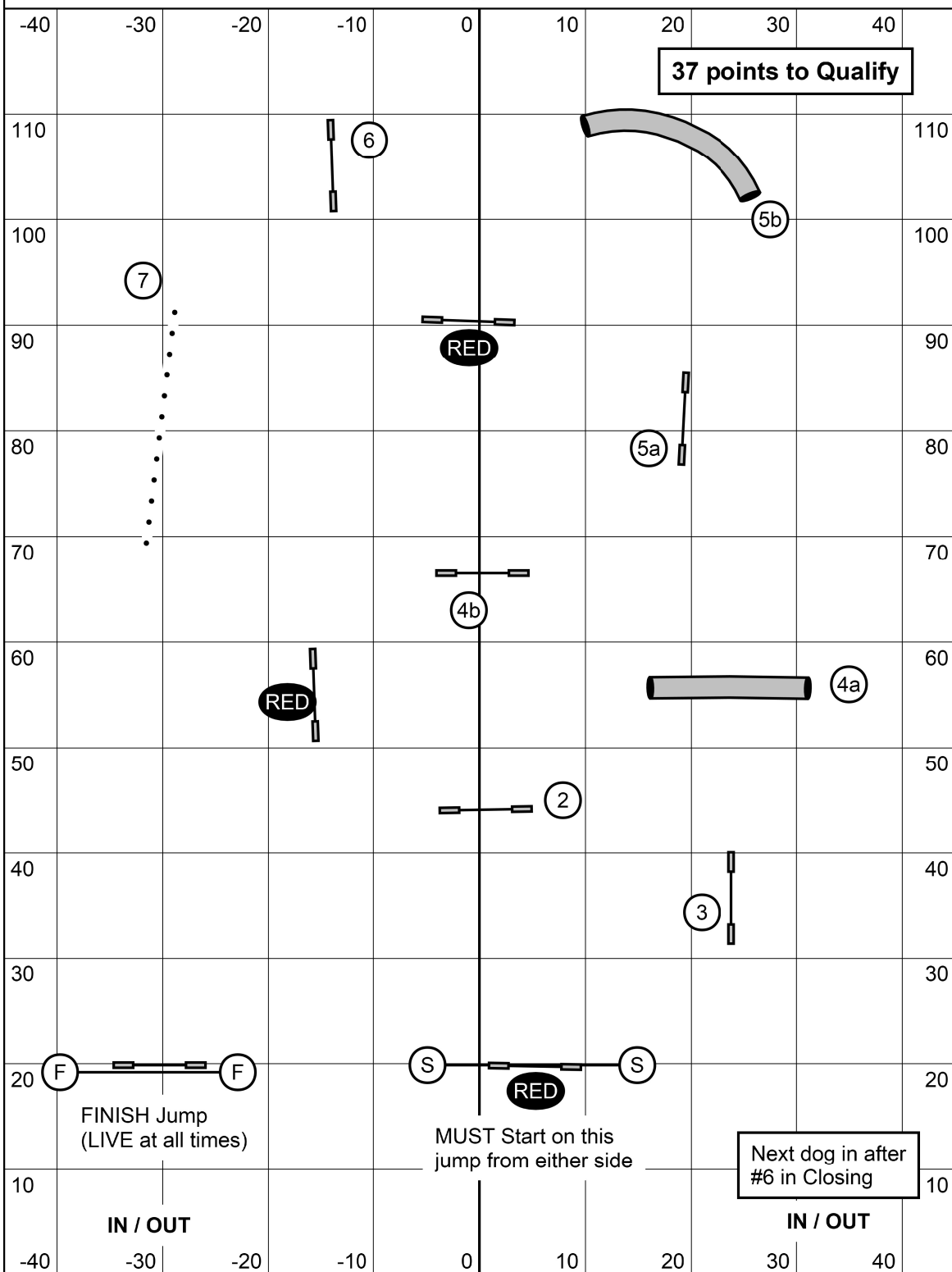
**PAWS REGIONAL CHAMPIONSHIP - AUGUST 16-18, 2019**

Wide World of Indoor Sports South, N. Kingstown, RI

**BRIEFING:** Start and Finish as indicated. Combo's - any which way in Opening (each element only once or whistle); as numbered in Closing (with #2 being bi-directional).

TIMES: 20+=50; 14/16=52; 10=54. PF14/16/20=52; PF12=54; PF8=56.

**ADV / P2 SNOOKER - Sat, Aug.17,2019** JUDGE: Patty Drom



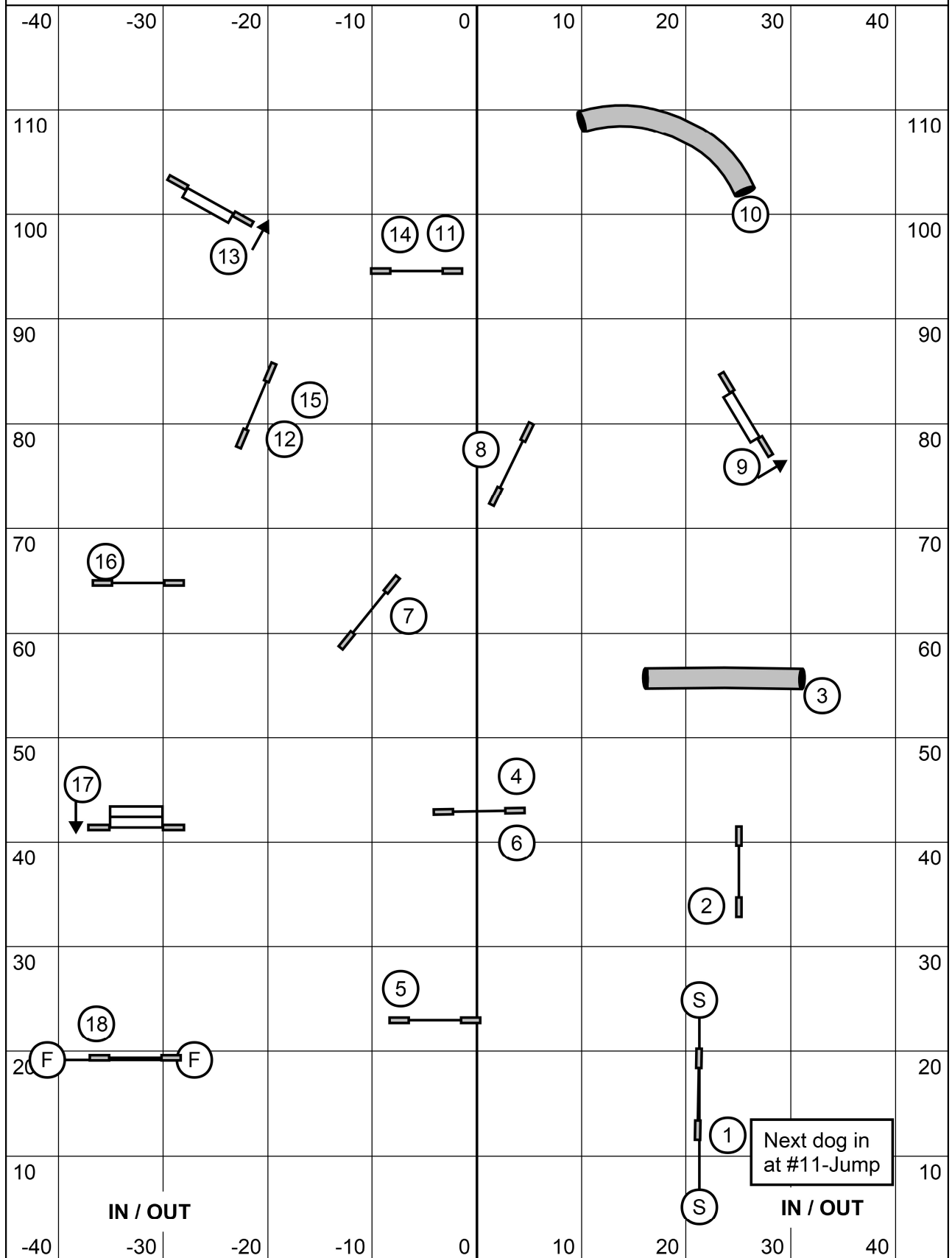
**PAWS REGIONAL CHAMPIONSHIP - AUGUST 16-18, 2019**

Wide World of Indoor Sports South, N. Kingstown, RI

**BRIEFING:** Start and Finish as indicated. Combo's - any which way in Opening (each element only once or whistle); as numbered in Closing (with #2 being bi-directional).

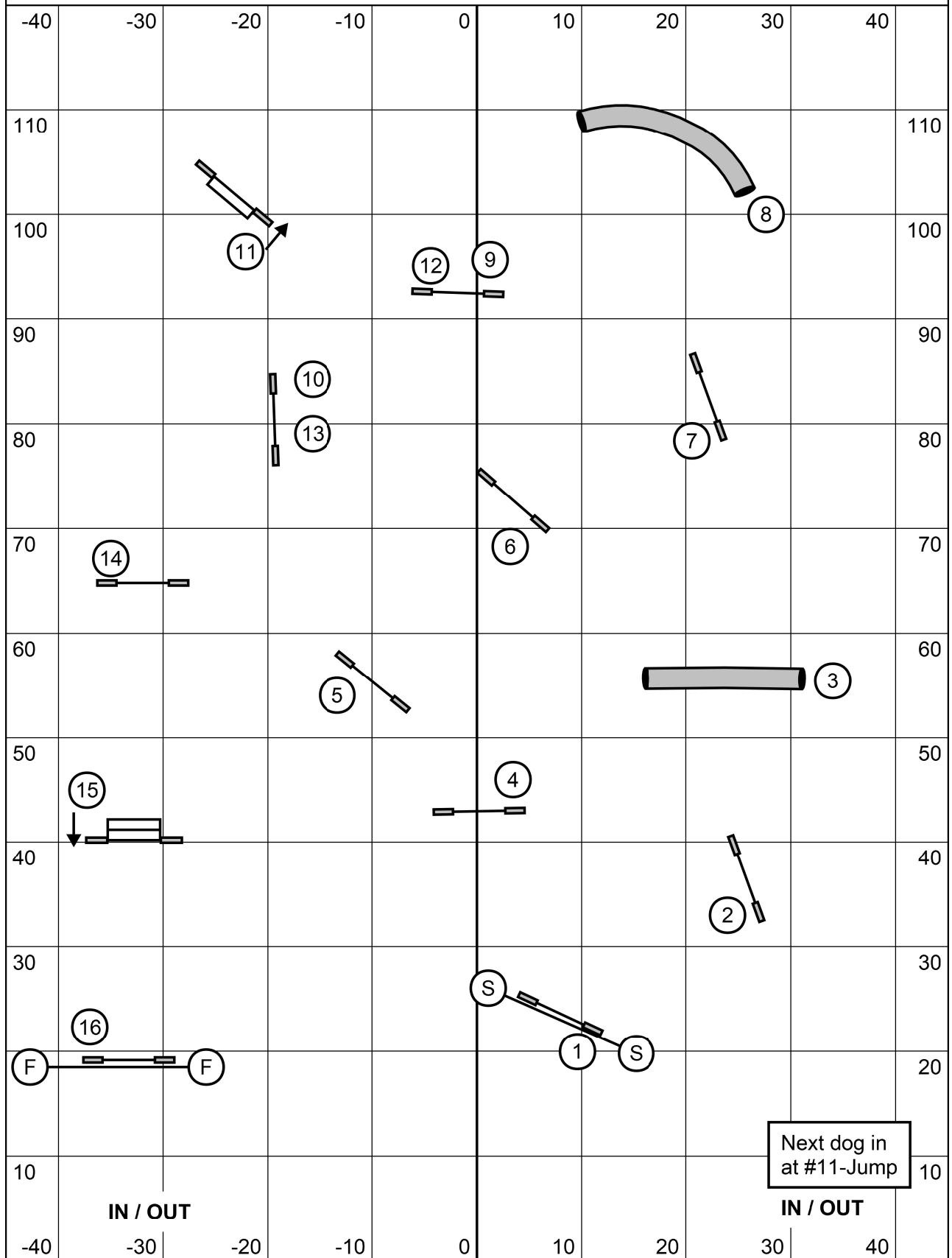
TIMES: 20+=50; 14/16=52; 10=54. PF14/16/20=52; PF12=54; PF8=56.

**ADV / P2 JUMPERS - Sat, Aug.17,2019** JUDGE: Patty Drom



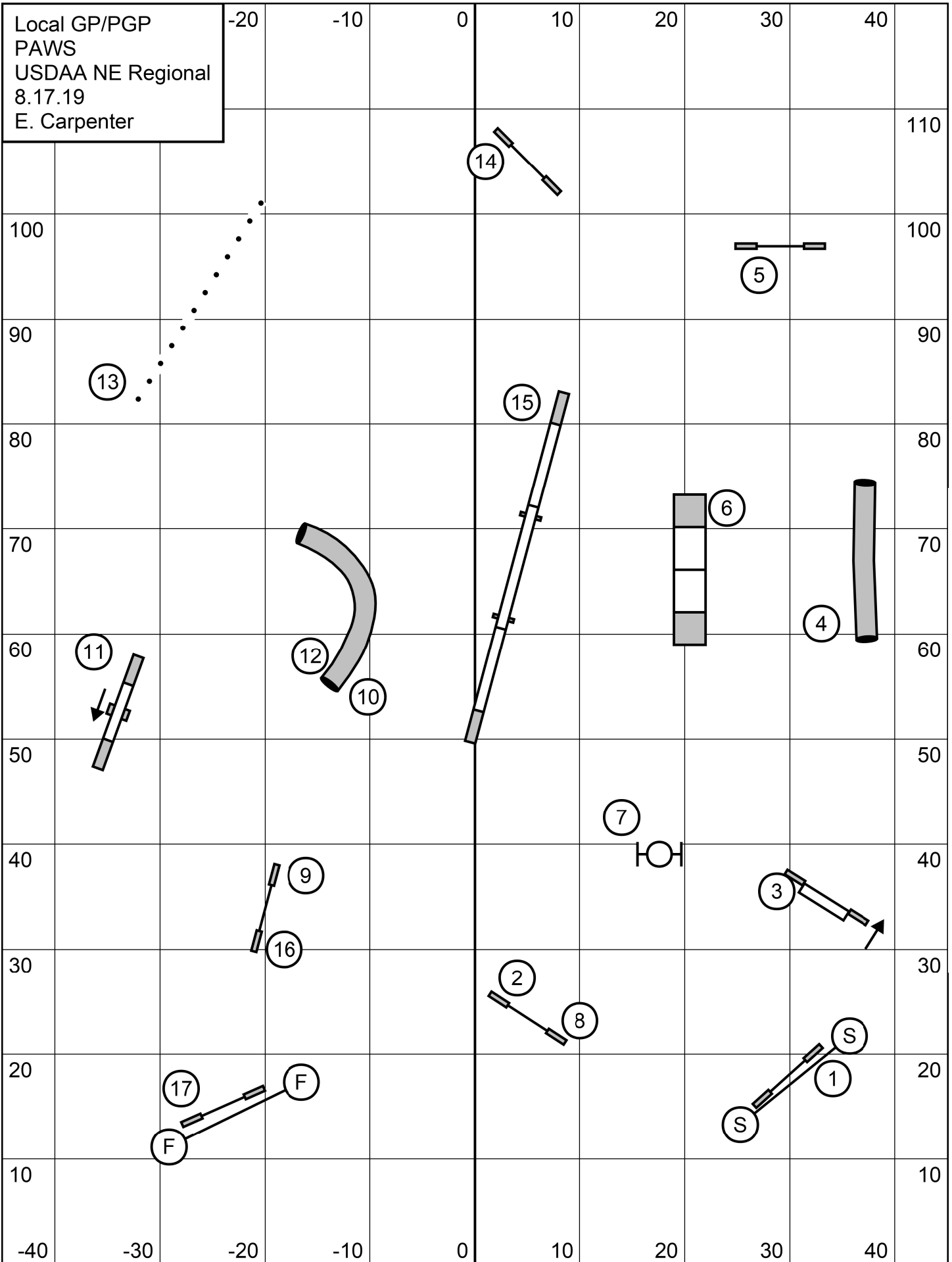
**PAWS REGIONAL CHAMPIONSHIP - AUGUST 16-18, 2019**  
 Wide World of Indoor Sports South, N. Kingstown, RI

**STARTER / P1 JUMPERS - Sat, Aug.17,2019** JUDGE: Patty Drom



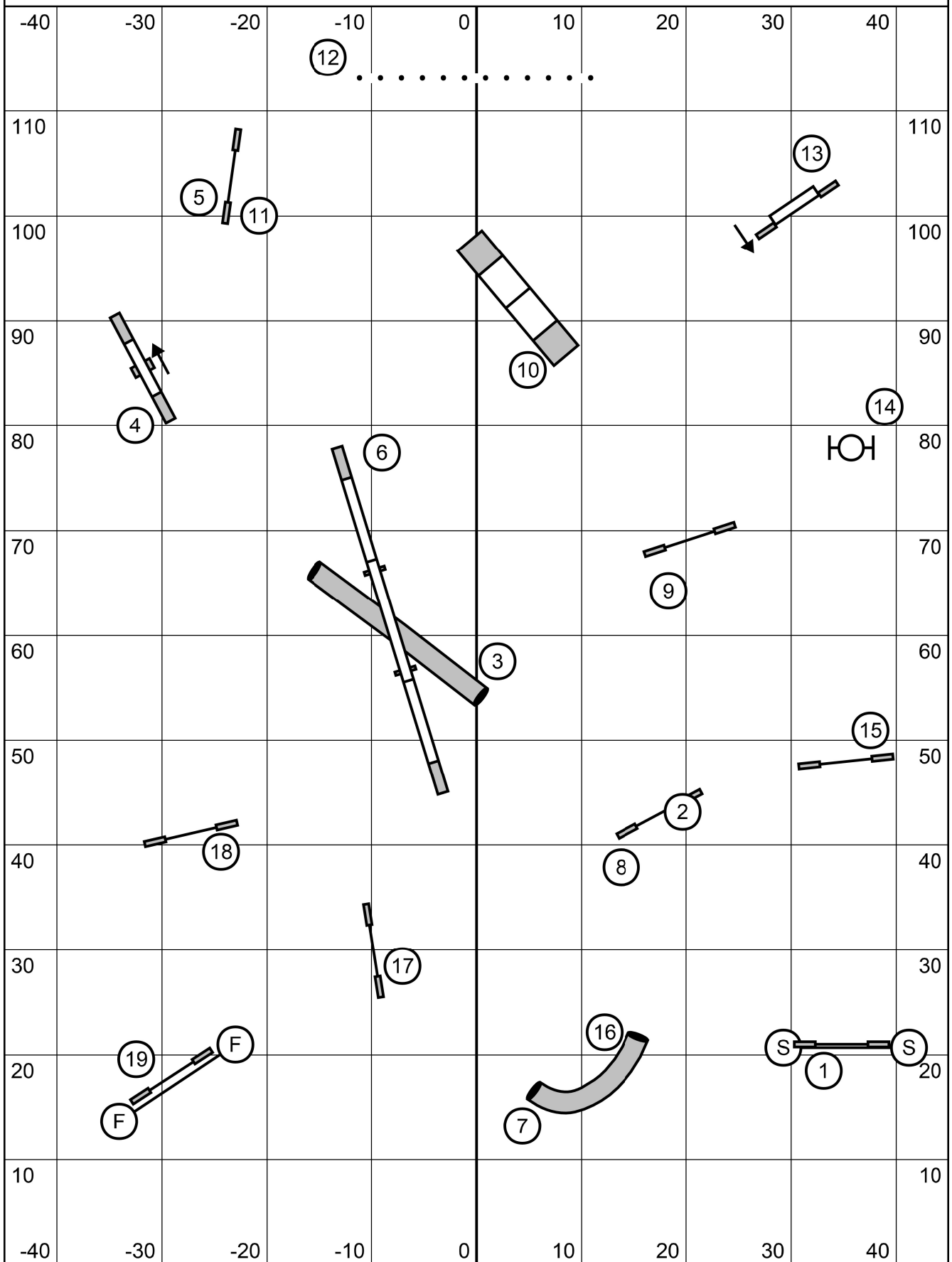
**PAWS REGIONAL CHAMPIONSHIP - AUGUST 16-18, 2019**  
 Wide World of Indoor Sports South, N. Kingstown, RI

Local GP/PGP  
PAWS  
USDAA NE Regional  
8.17.19  
E. Carpenter



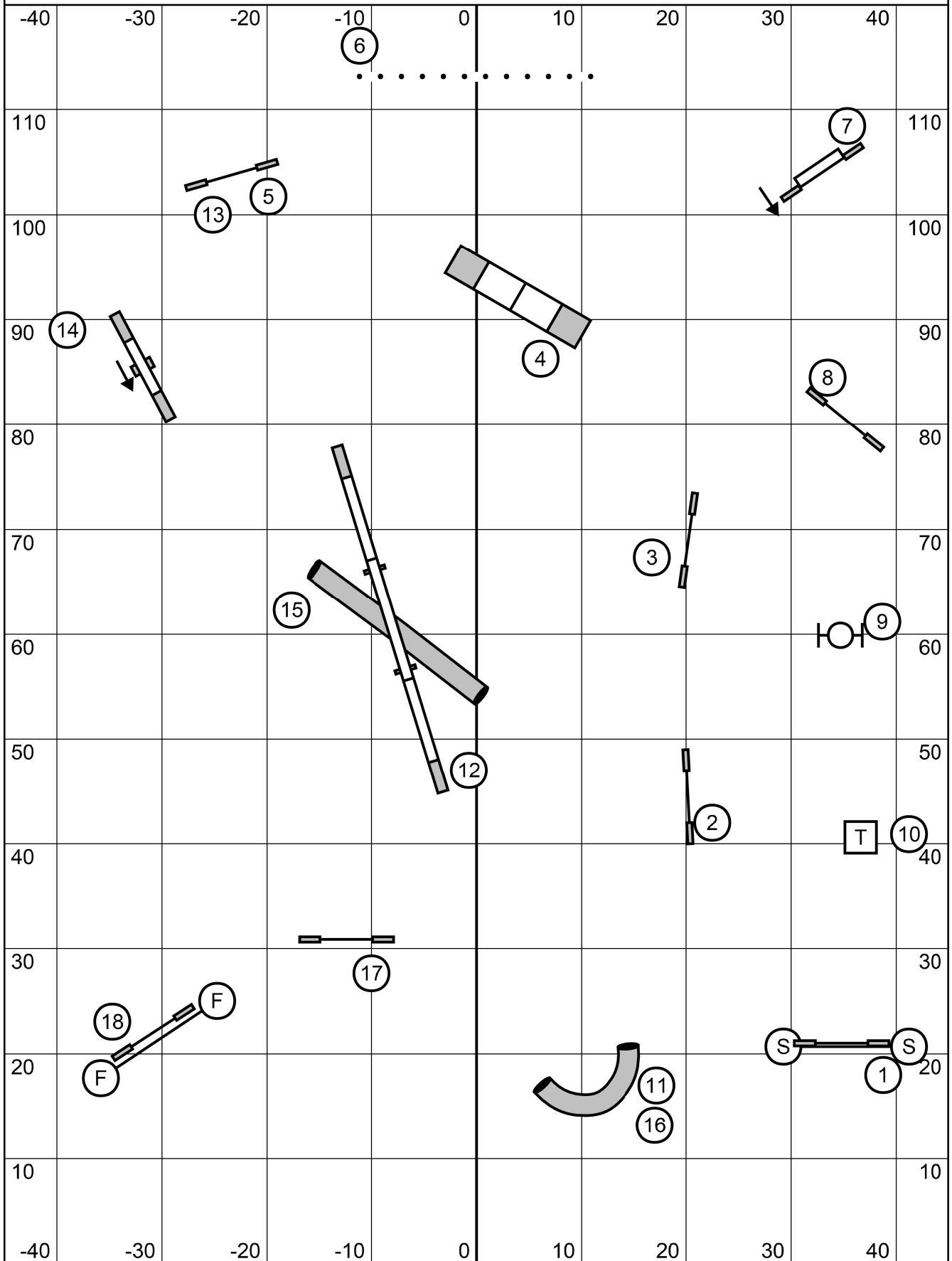
# Grand Prix/PGP Rd 1

Playing Agility With Style Regional  
Saturday, August 17th, 2019  
Judge: Kama Rueschenberg

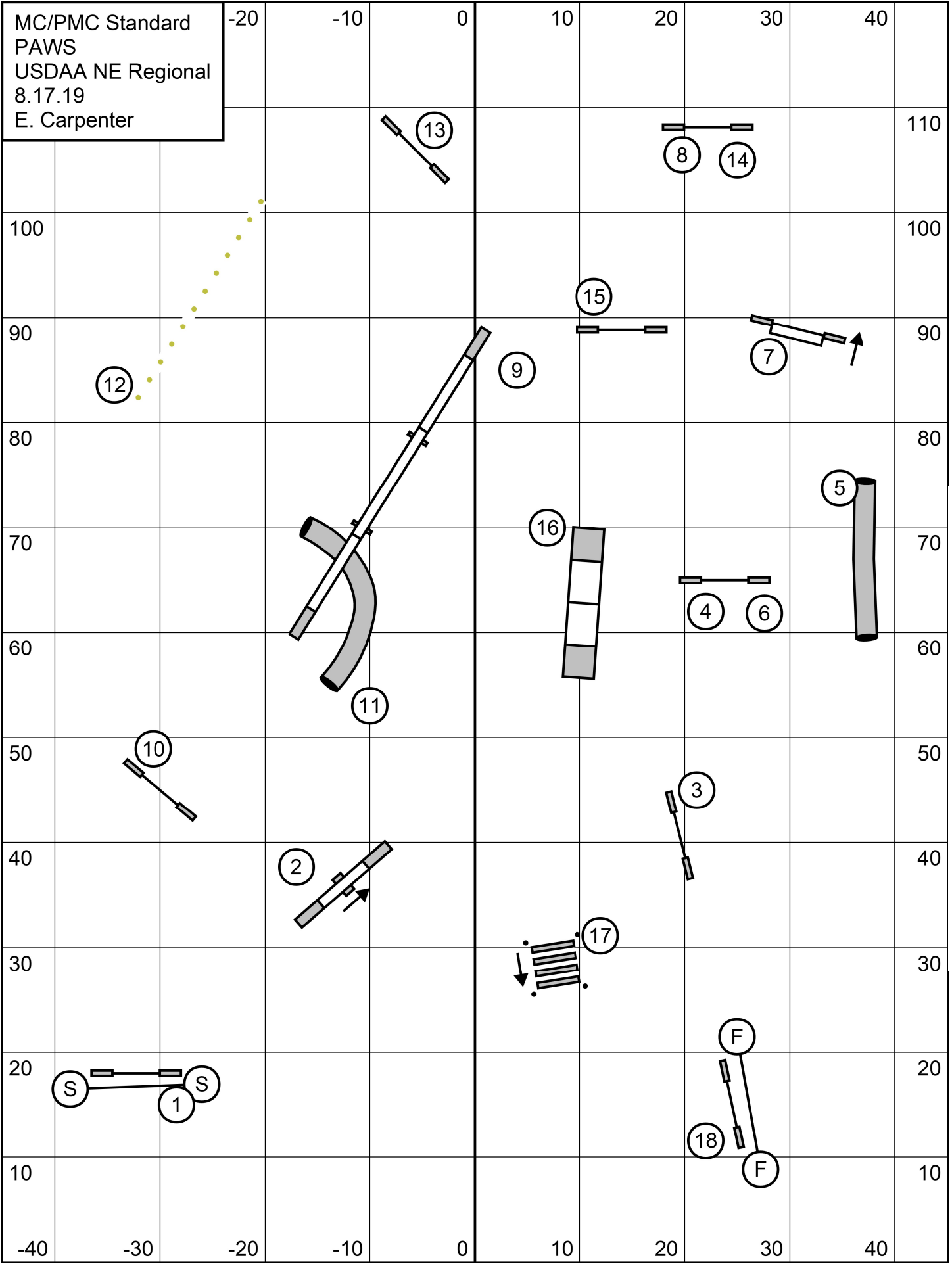


# Masters/PIII/Vet Standard

Playing Agility With Style Regional  
Saturday, August 17th, 2019  
Judge: Kama Rueschenberg



MC/PMC Standard  
PAWS  
USDAA NE Regional  
8.17.19  
E. Carpenter





Regional GP/PGP Finals  
PAWS  
USDAA NE Regional  
8.17.19  
E. Carpenter

