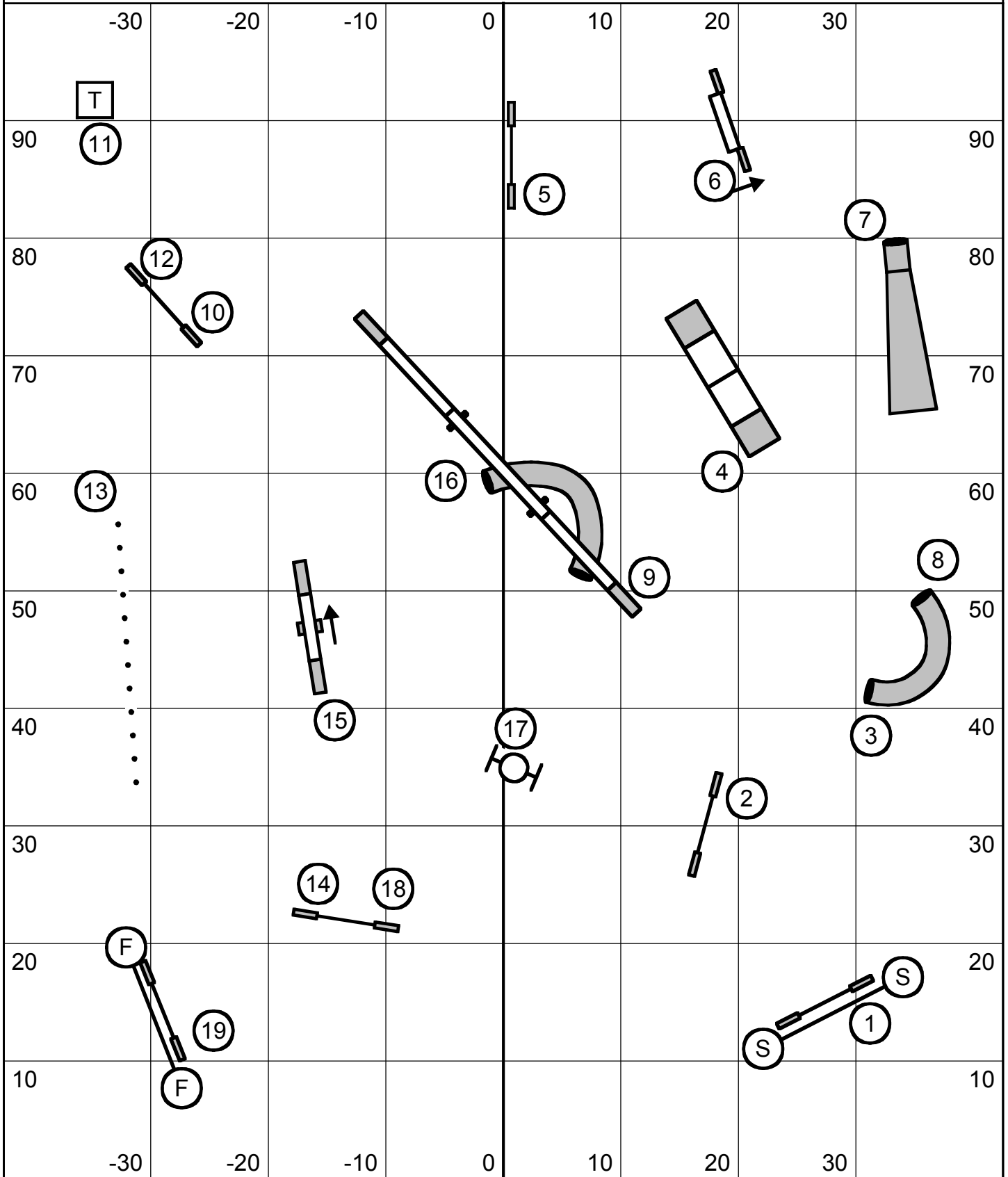
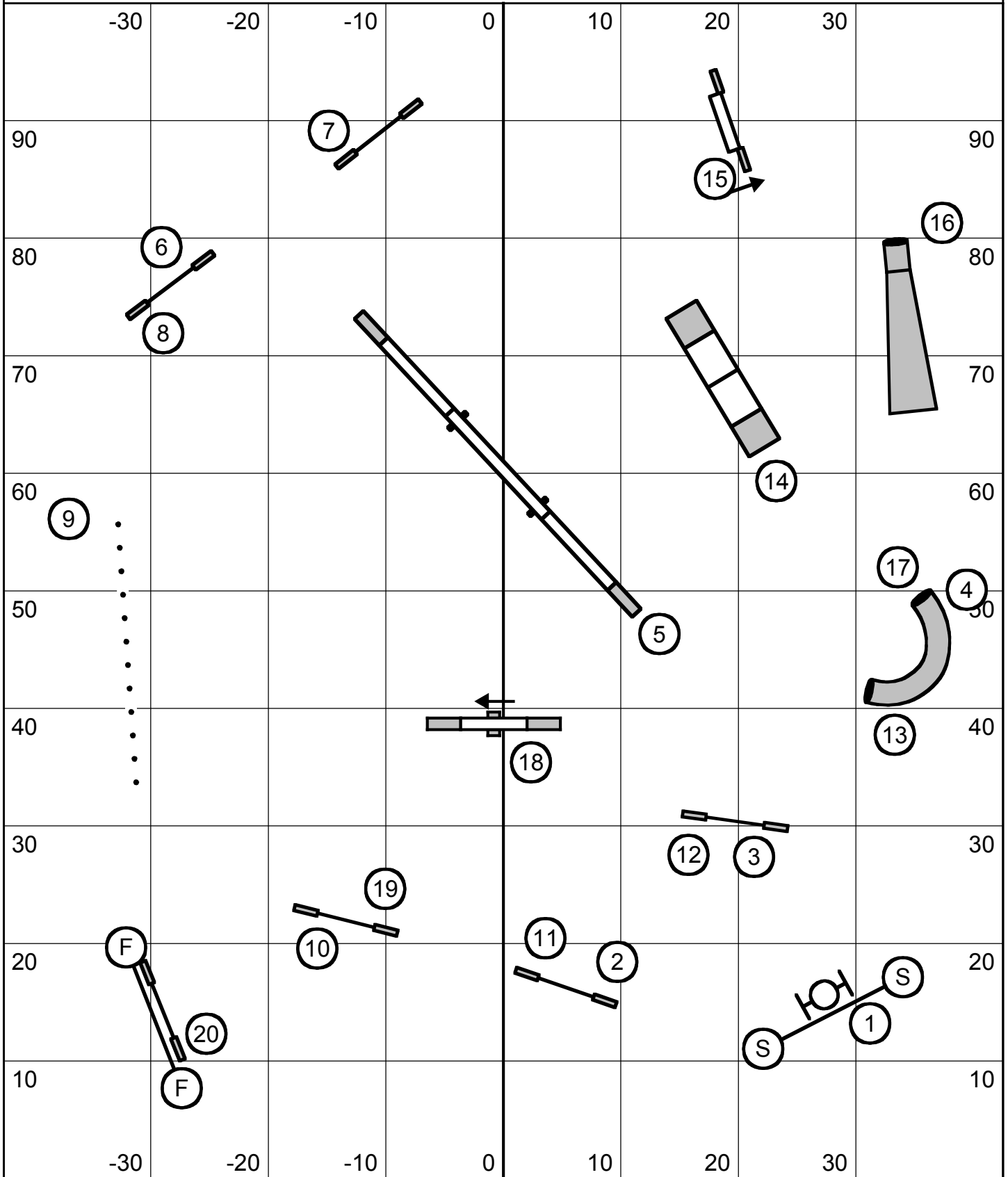


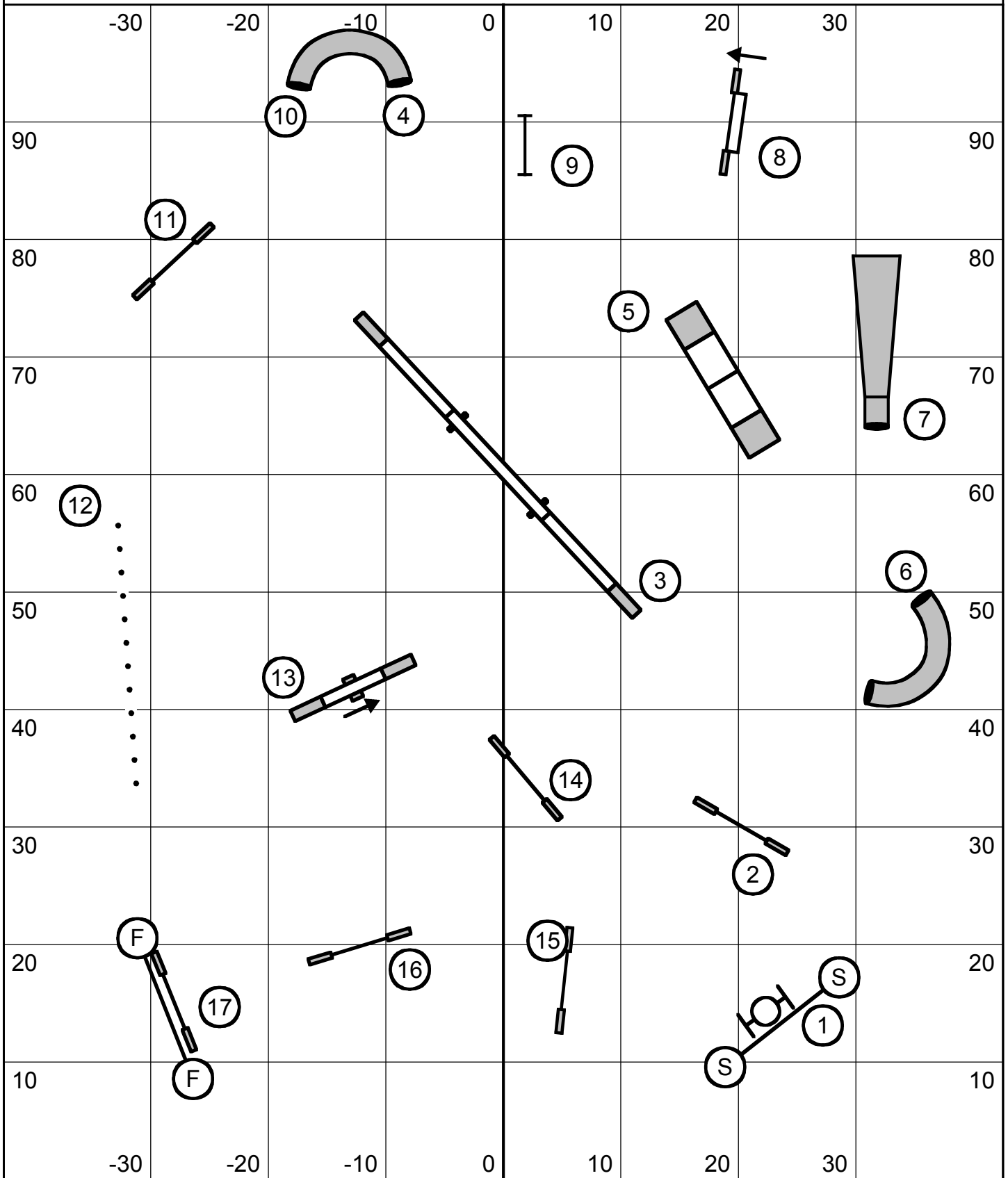
Masters/PIII/Veterans Standard, BARK-NH!  
 Sunday, October 12, 2014  
 Peggy Hammond



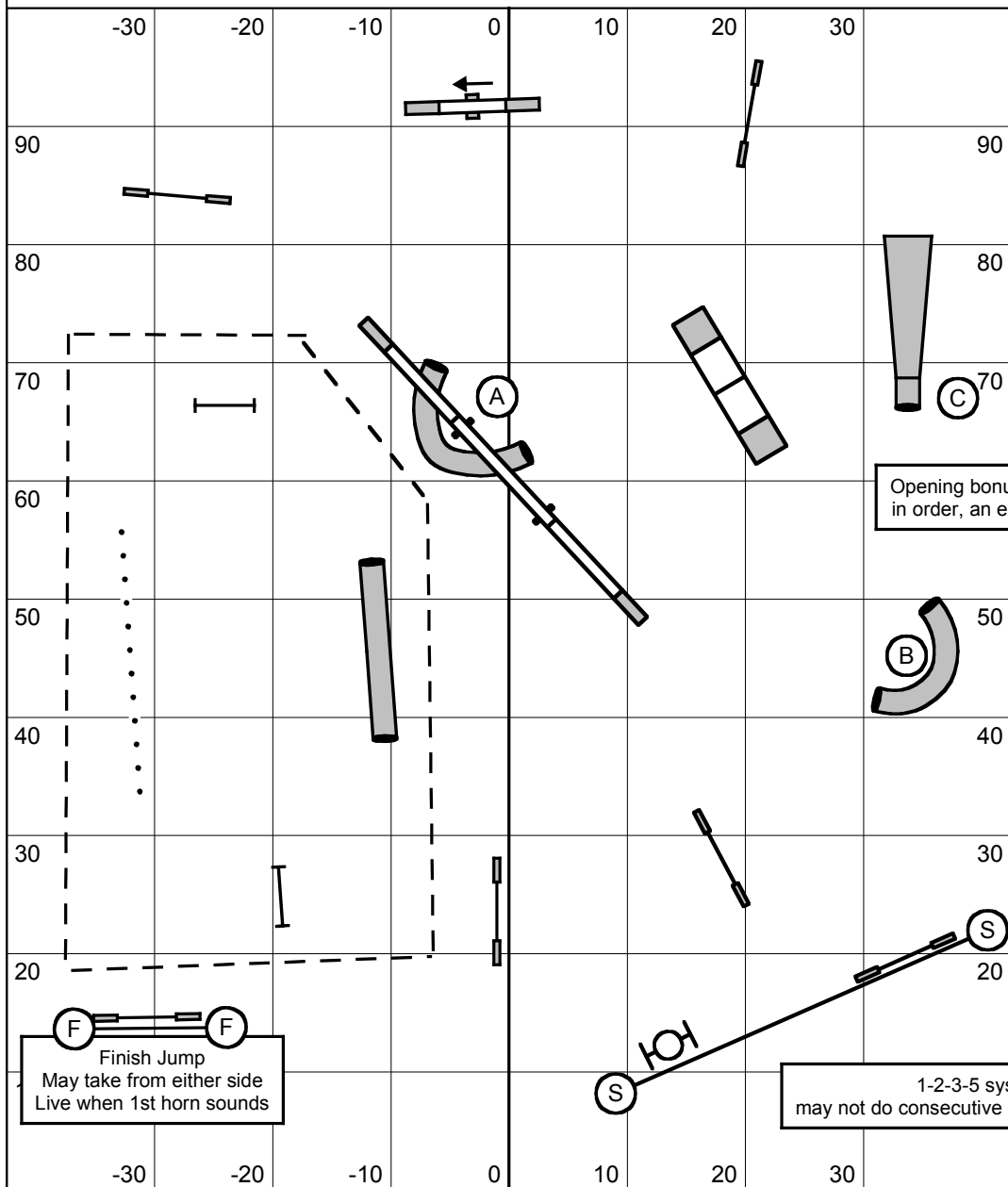
Masters/Performance Challenge Standard, BARK-NH!  
 Sunday, October 12, 2014  
 Peggy Hammond



Team/PV Standard, BARK-NH!  
 Sunday, October 12, 2014  
 Peggy Hammond



Team/PV Gamblers, BARK-NH!  
 Sunday, October 12, 2014  
 Peggy Hammond



OPENING TIMES	
22"/26" (16"/20"P)	25 seconds
16"/18" (12"P)	27 seconds
12"/14" (8"P)	30 seconds

CLOSING TIMES	
22"/26" (16"/20"P)	16 seconds
16"/18" (12"P)	18 seconds
12"/14" (8"P)	20 seconds

Opening bonus: if tunnels/chute A-B-C are taken in order, an extra 4 points will be given (1X only)

1.5 multiplier

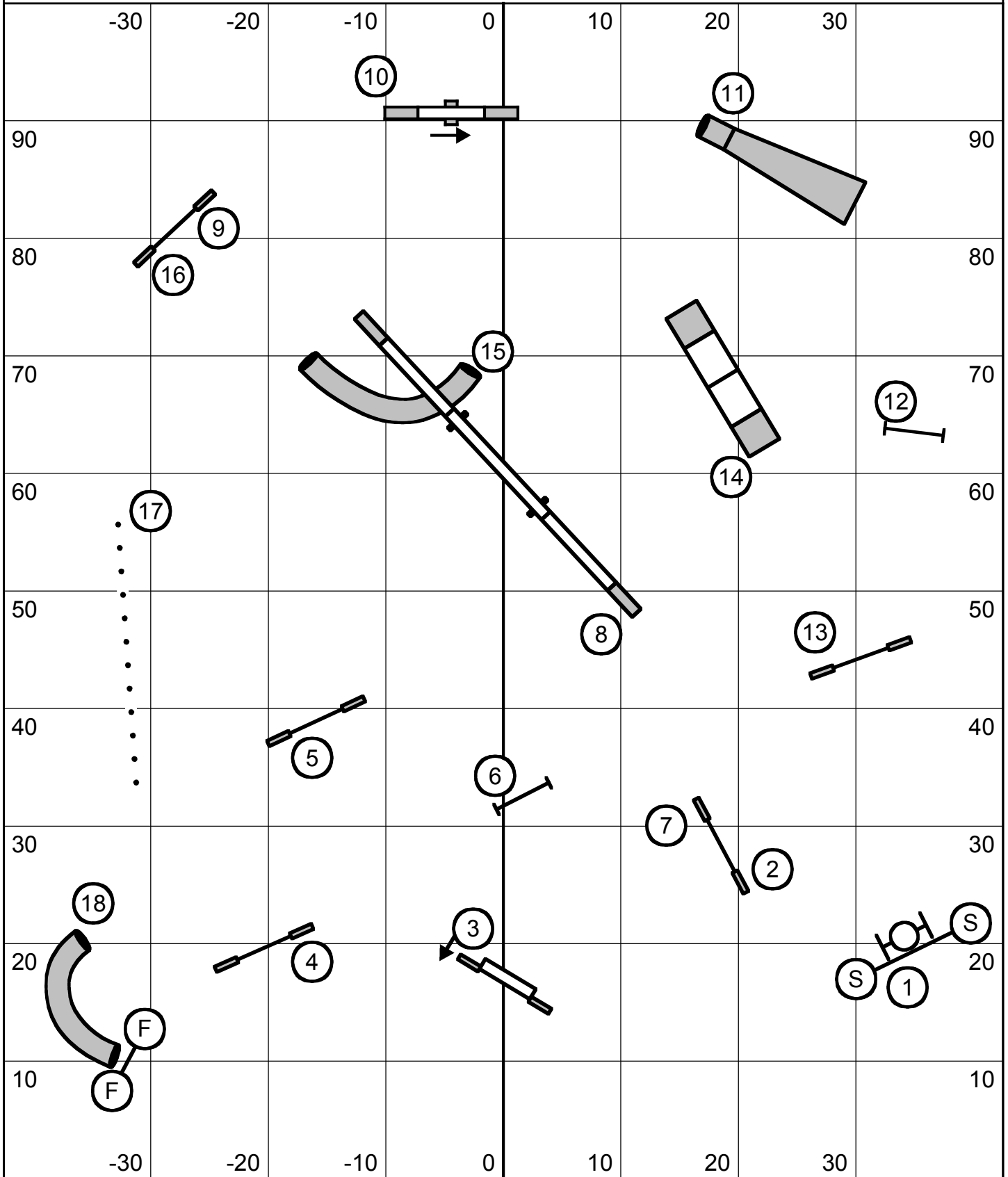
**(F)** Finish Jump  
 May take from either side  
 Live when 1st horn sounds

1-2-3-5 system, weaves are 5.  
 may not do consecutive contacts (back to back is allowed)

Opening: obstacle must be completed when horn sounds to earn opening points.  
 Any jumps that are down are dead for remainder of run, including gamble.

Gamble: No refusals will be judged. Obstacles may be taken 2x for points.  
 If 4 unique obstacles taken in sequence, an extra 5 points will be awarded for each time this is done (possible 2x).  
 Must cross finish jump before time is up to keep bonus points.

Grand Prix/Performance Grand Prix, BARK-NH!  
 Sunday, October 12, 2014  
 Peggy Hammond



Team Relay/PV Pairs, BARK-NH!  
 Sunday, October 12, 2014  
 Peggy Hammond

