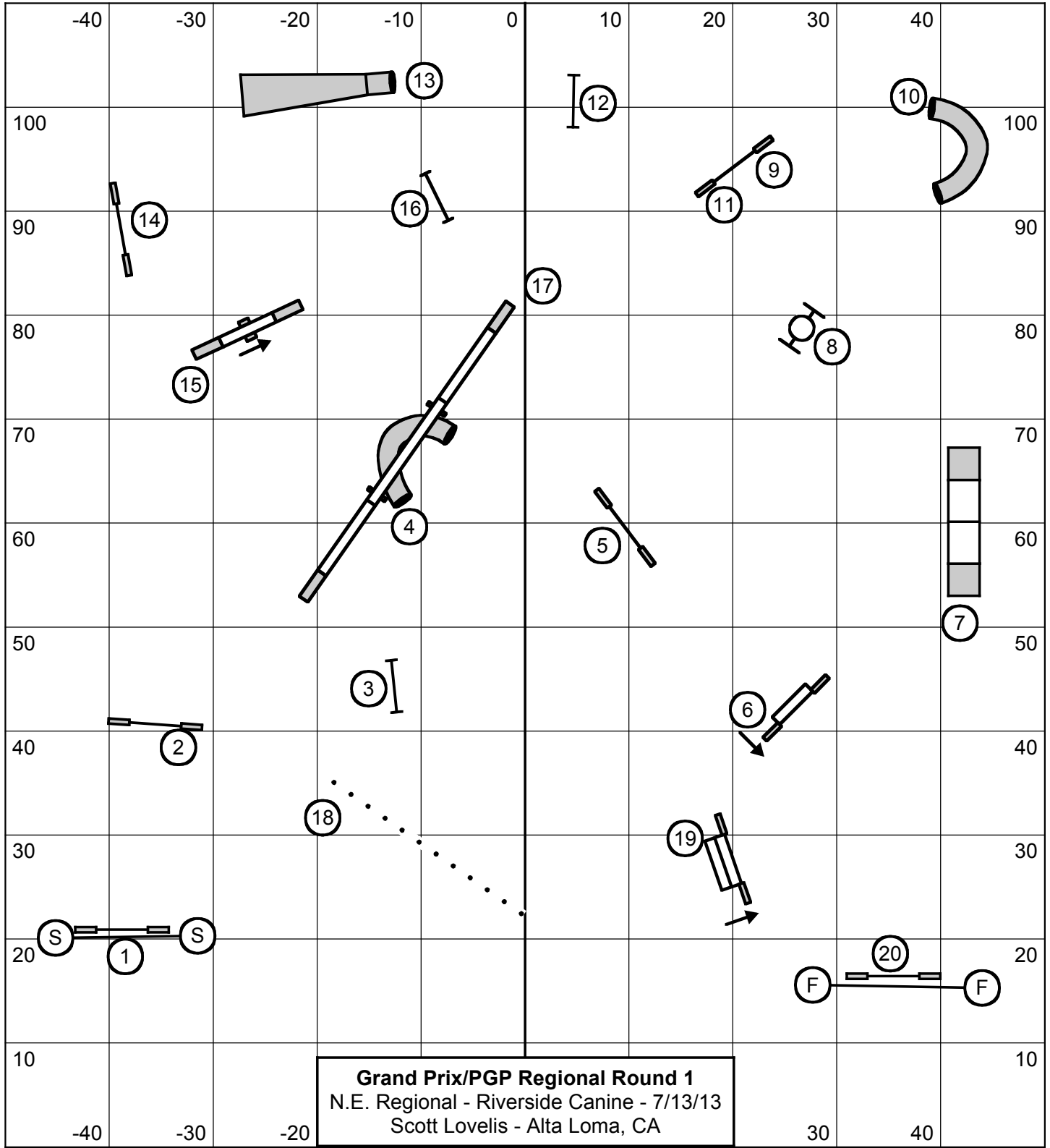
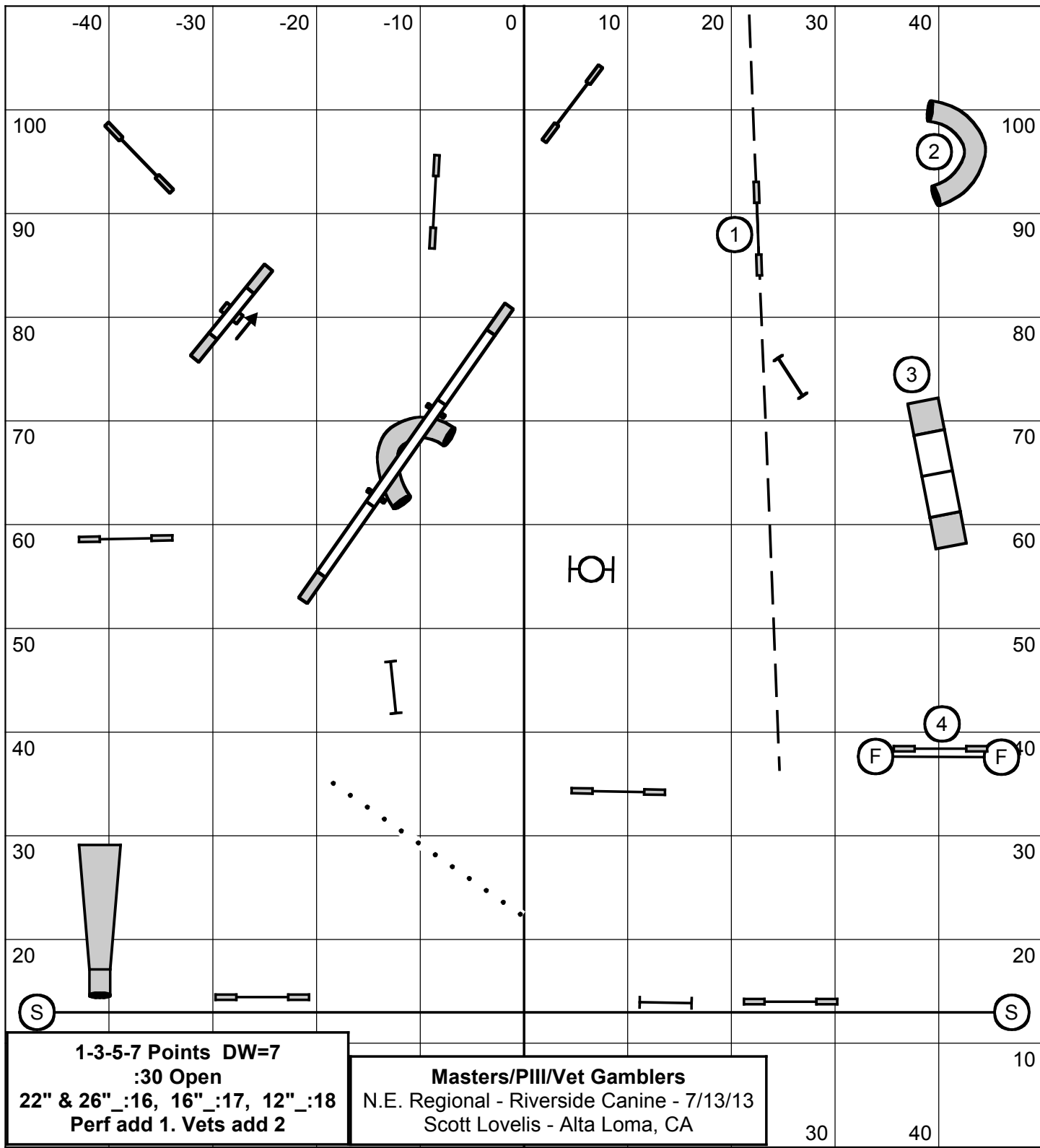
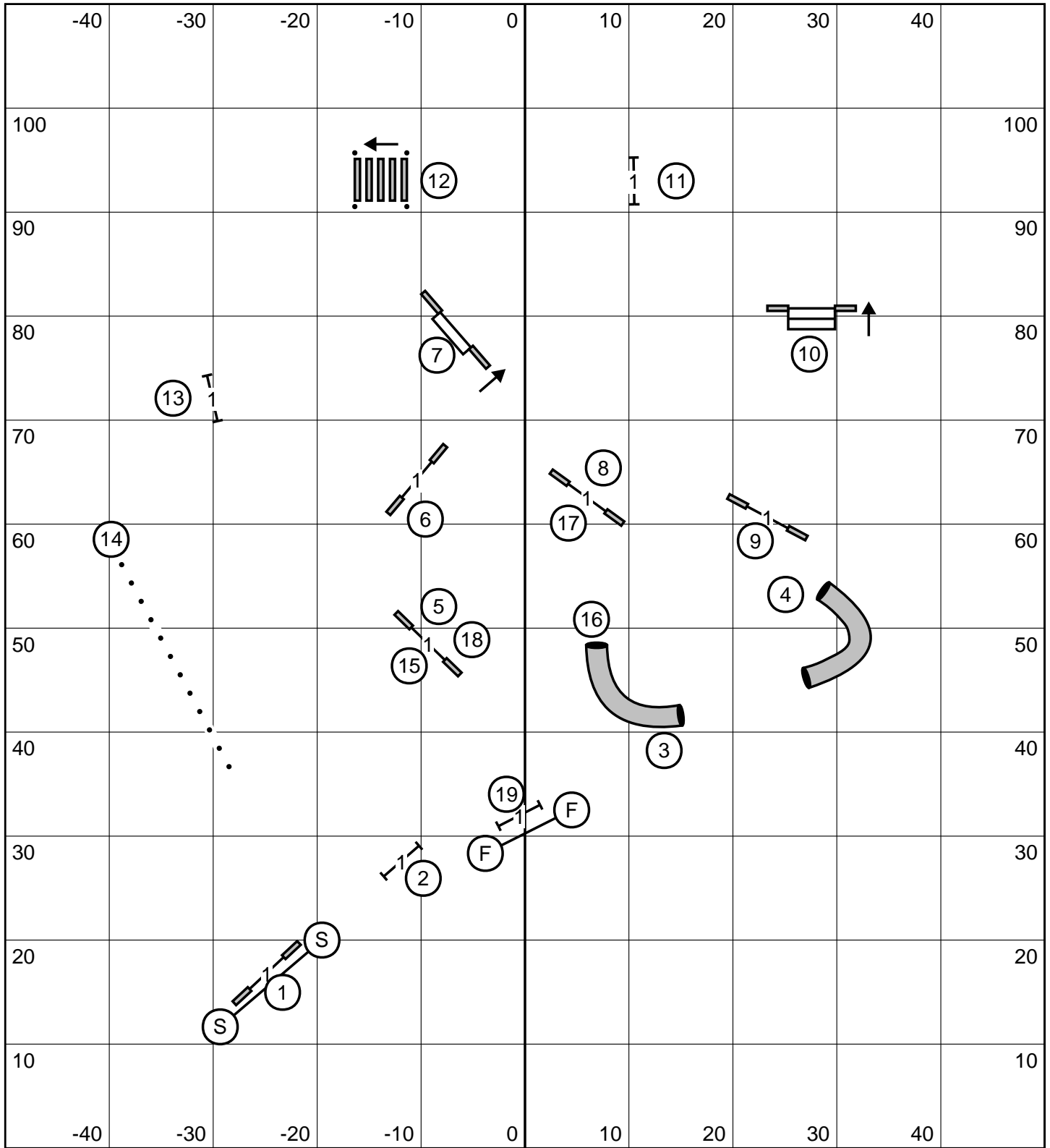


Sat. Steeplechase/PSJ Regional Rd.1
 7-13-2013
 Northeast Regional
 E.R.Quirouet

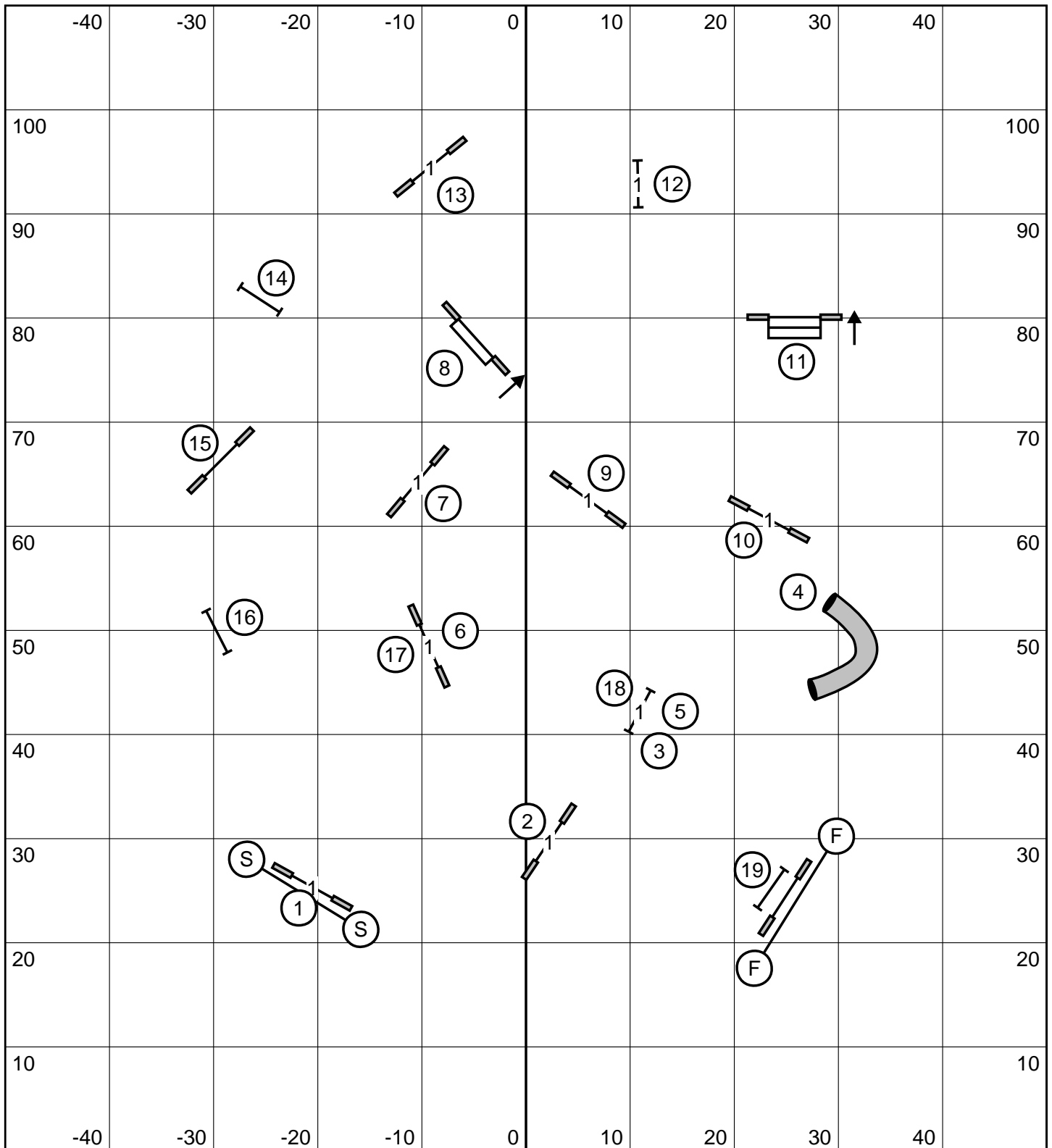






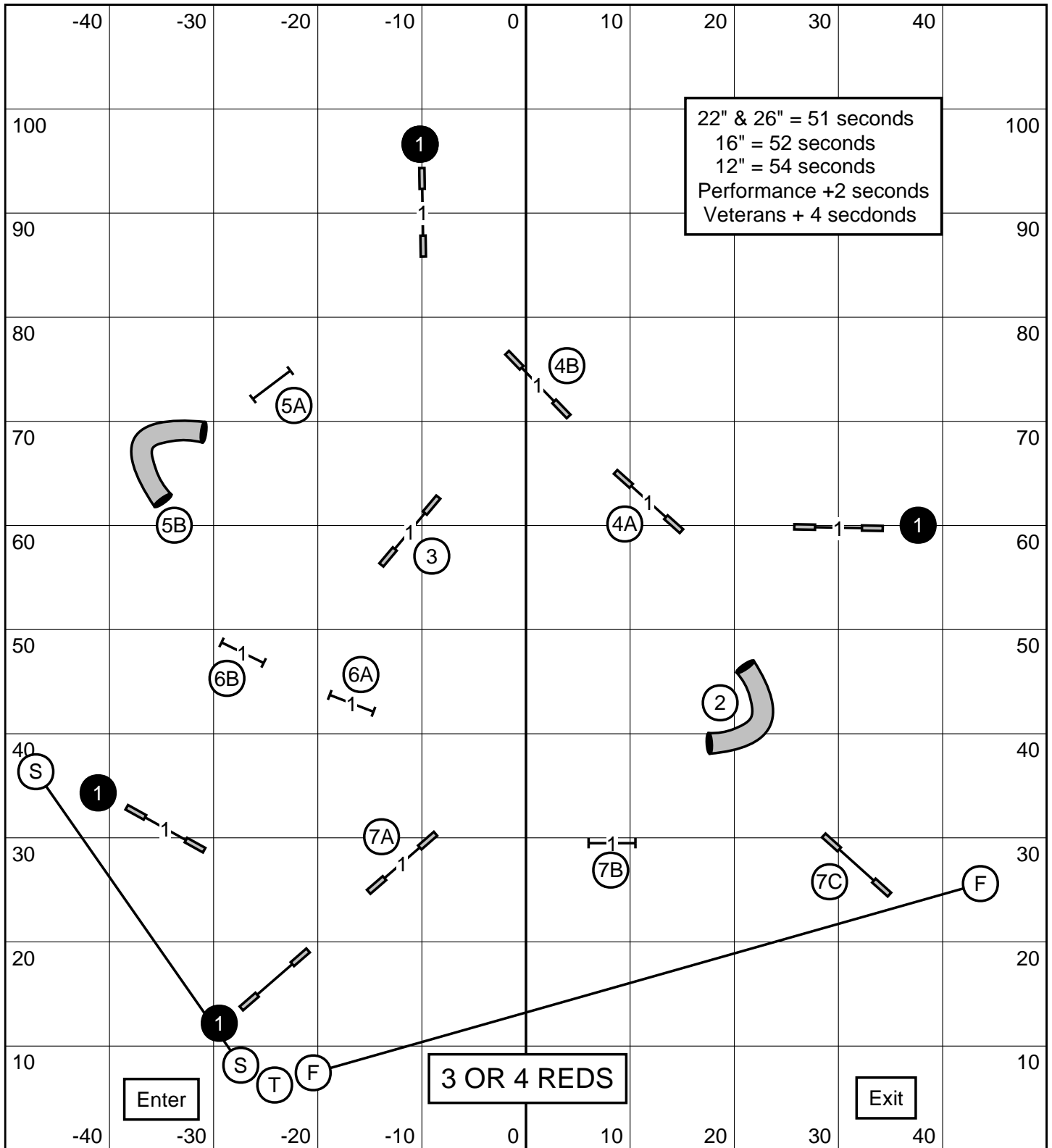
Master Challenge Jumpers
 Saturday, July 13, 2013

Northeast Regional, R.I.
 Frank Holik



Master/P3 Jumpers
 Saturday, July 13, 2013

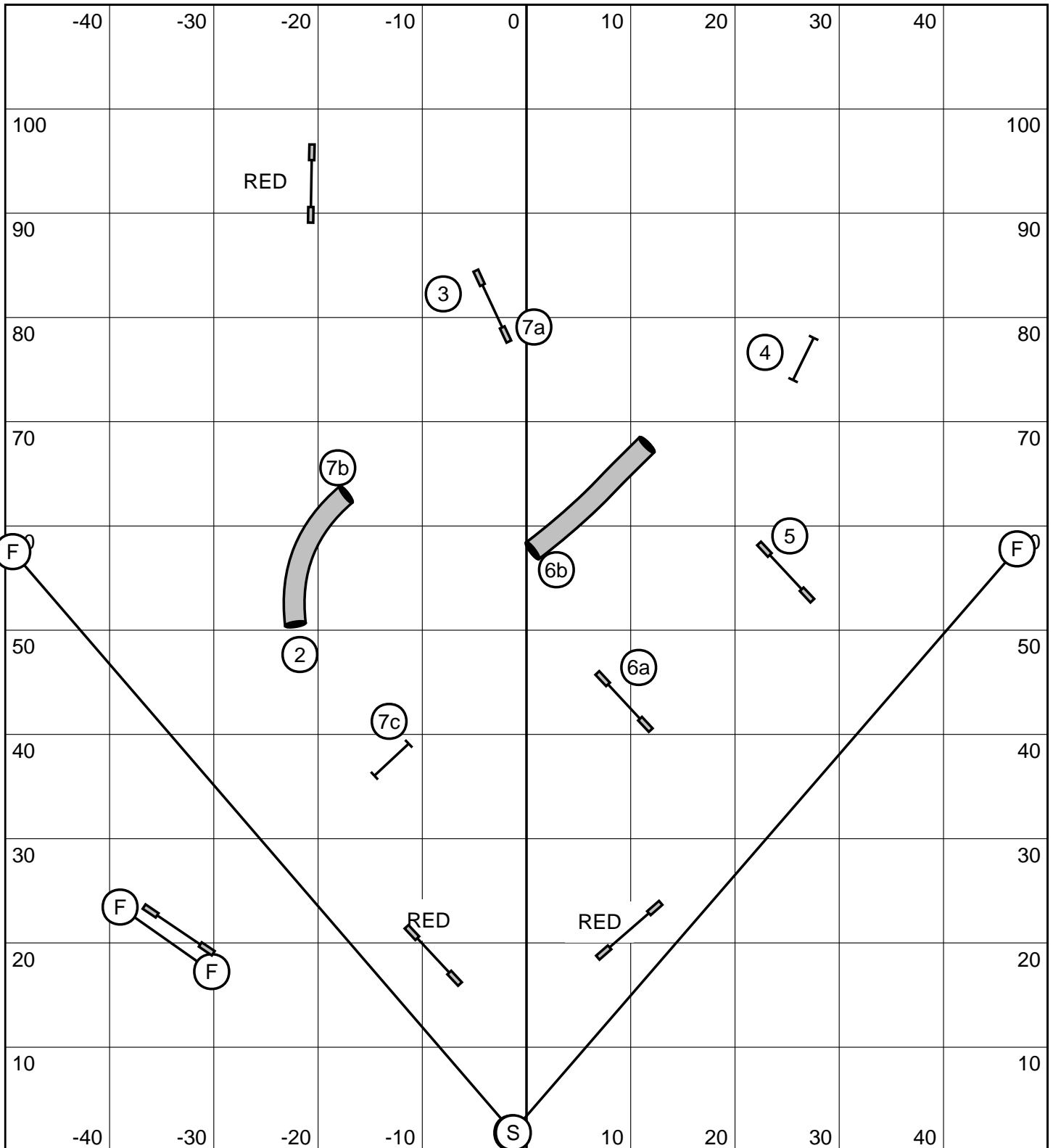
Northeast Regional, R.I.
 Frank Holik



Master/P3 Snooker
 Saturday, July 13, 2013

Northeast Regional, R.I.
 Frank Holik

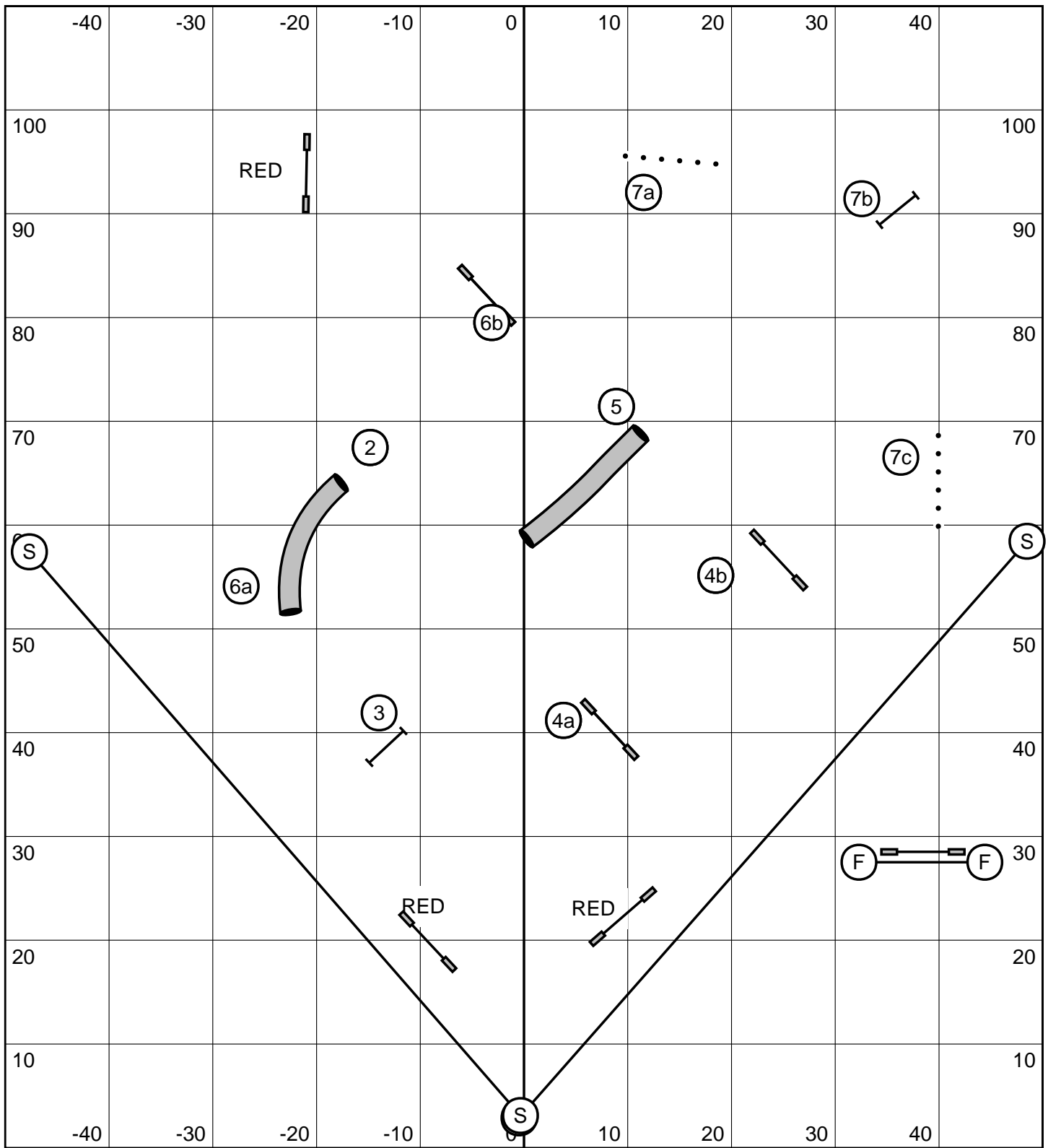
Opening - ONLY the EVEN numbered obstacles are bi-directional.
 Closing - #2 is bi-directional. All others as numbered.



Starters P1 Snooker
 Sat.7-13-2013
 Northeast Regional
 E.R.Quirouet

everything is bi-dirrectional in the opening
 must be taken as labeled in the close
 Open dogs=55sec 16"=56sec. 12"=58sec
 Performance add 2 seconds

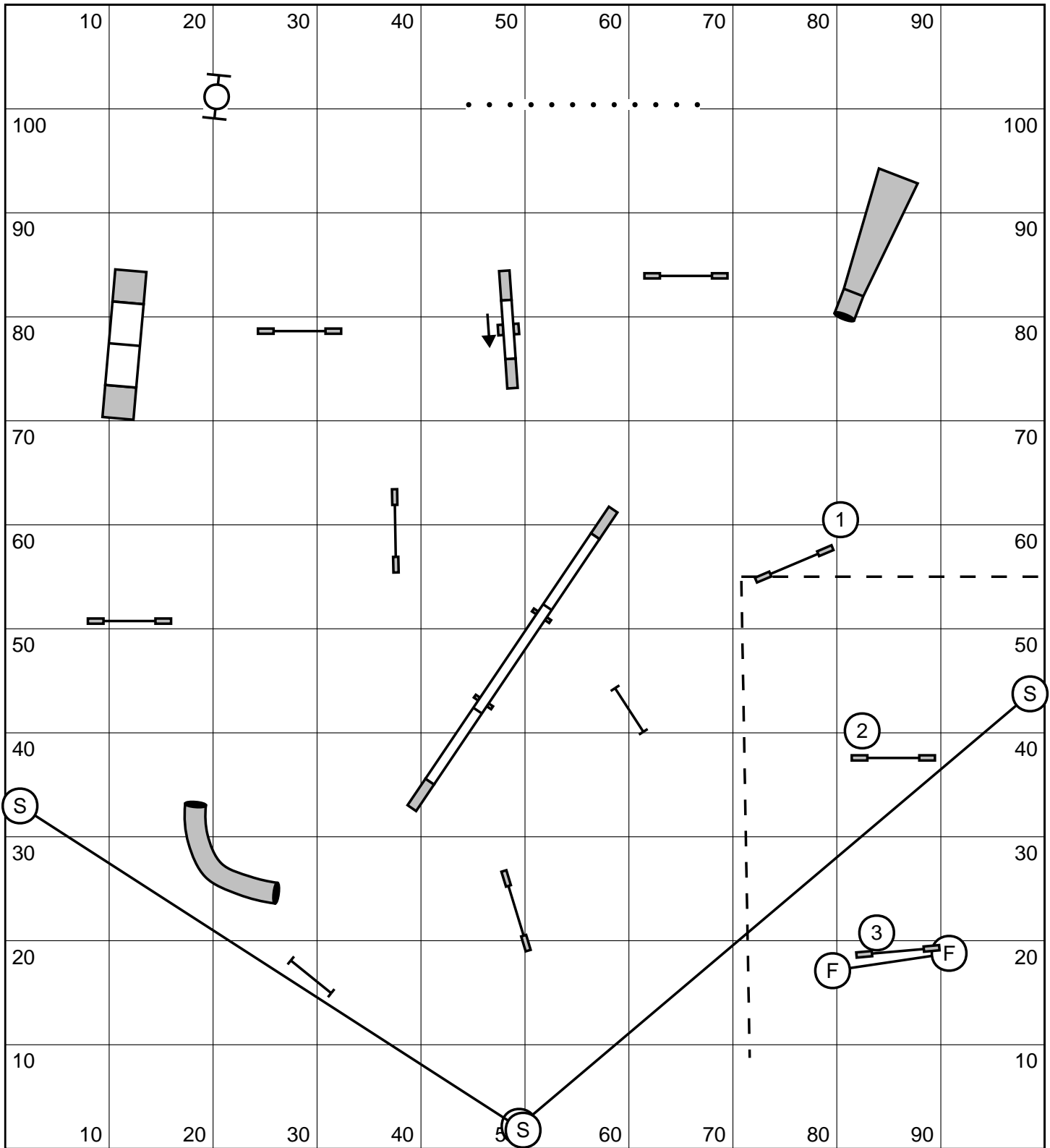
finish line is live at all times



Advanced P2 Snooker
 Sat.7-13-2013
 Northeast Regional
 E.R.Quirouet

everything is bi-directional in the opening
 must be taken as labeled in the close
 Open dogs=54sec 16"=55sec. 12"=57sec
 Performance add 2 seconds

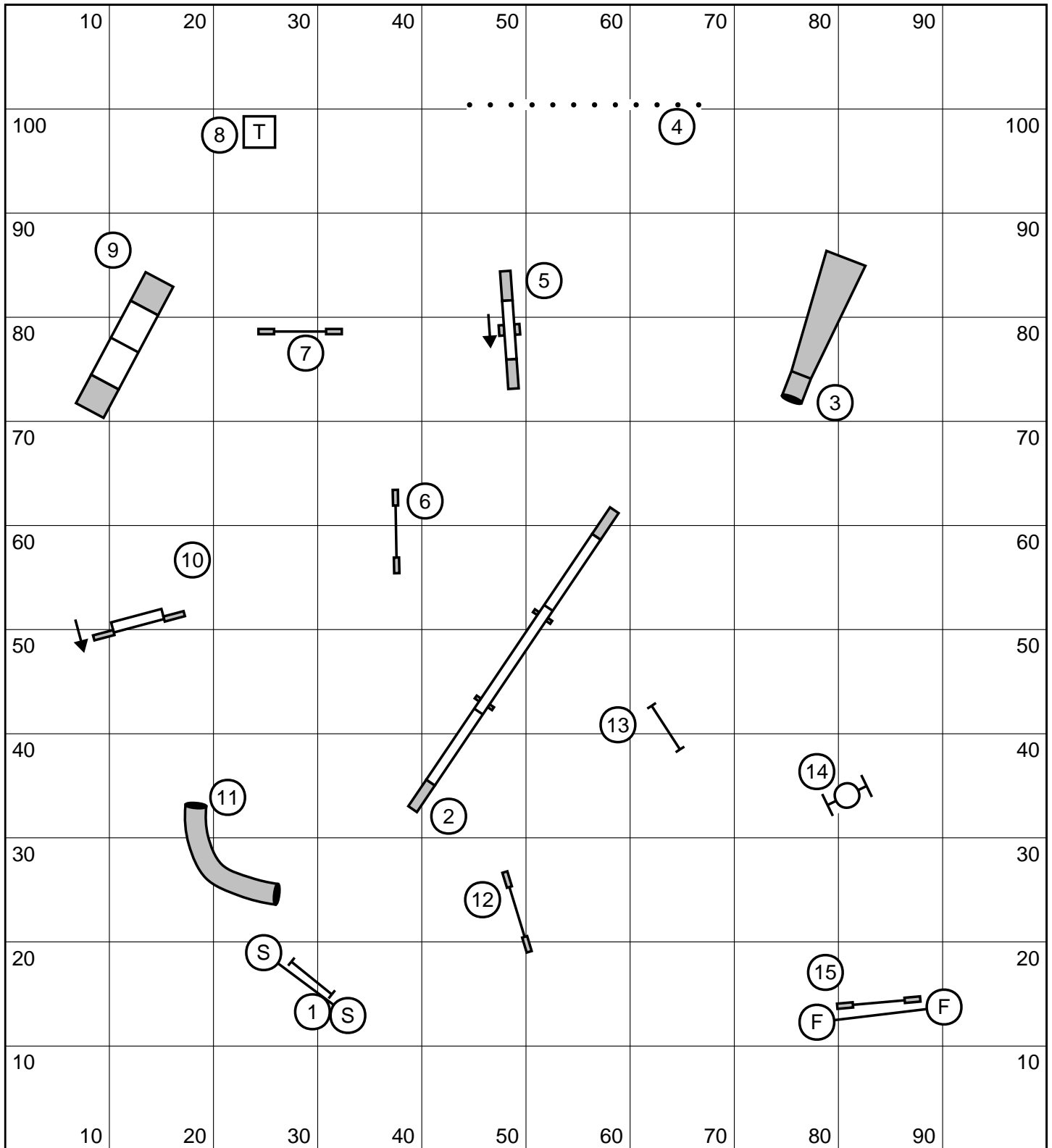
finish line is live at all times



Starters P1 Gamble
 Sat.7-13-2013
 Northeast Regional
 E.R.Quirouet

1-3-5-7 point system weaves = 7
 25 sec opening
 Gamble = 20pts 22/26=14sec 12/16 = 16sec
 Performance add 1sec.

No back to back or consecutive contacts



Starters P1 Standard
 Sat.7-13-2013
 Northeast Regional
 E.R.Quirouet

