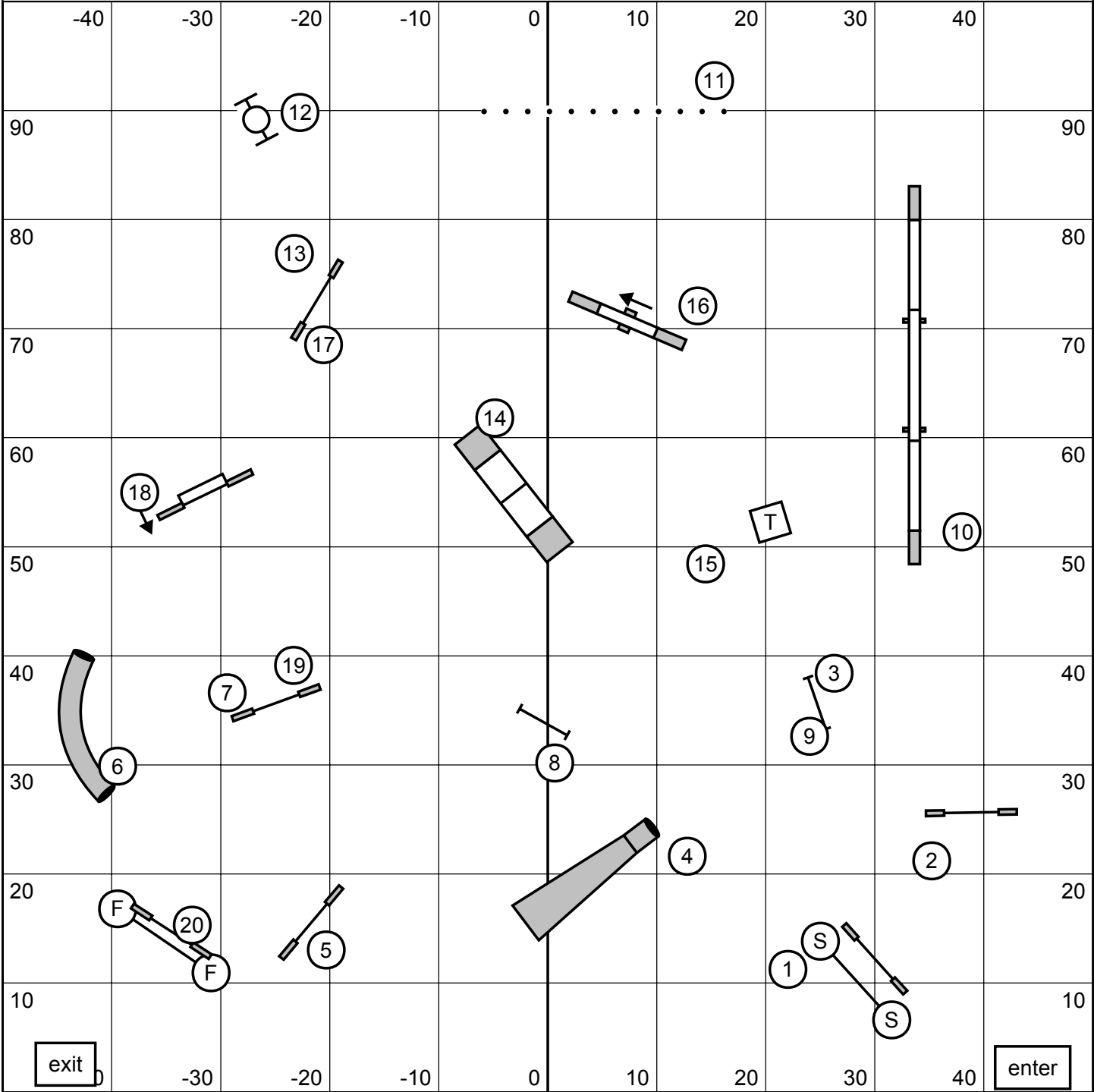
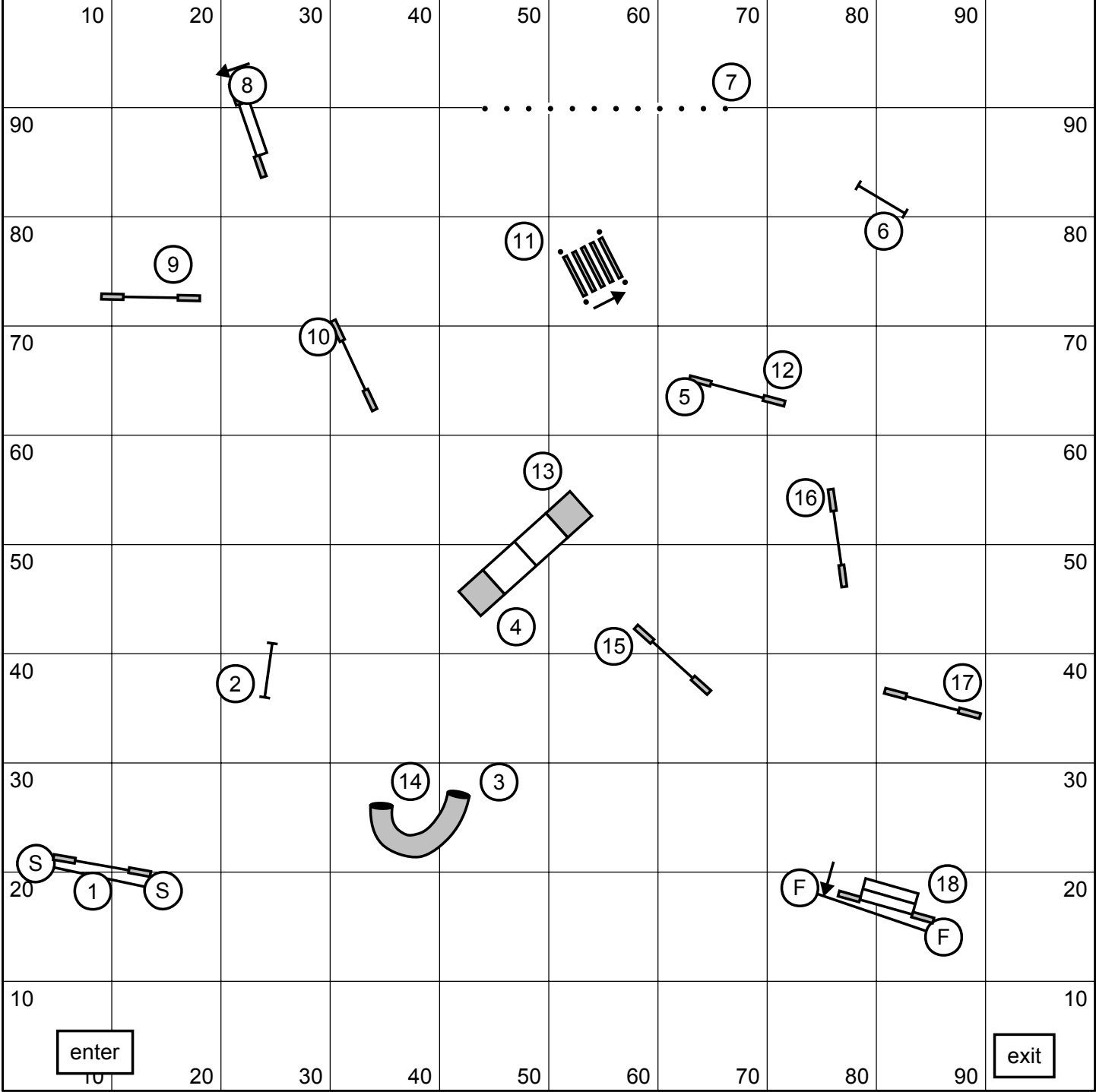


Advanced/PII Standard
PAWS
April 28, 2013
Maureen Sullivan



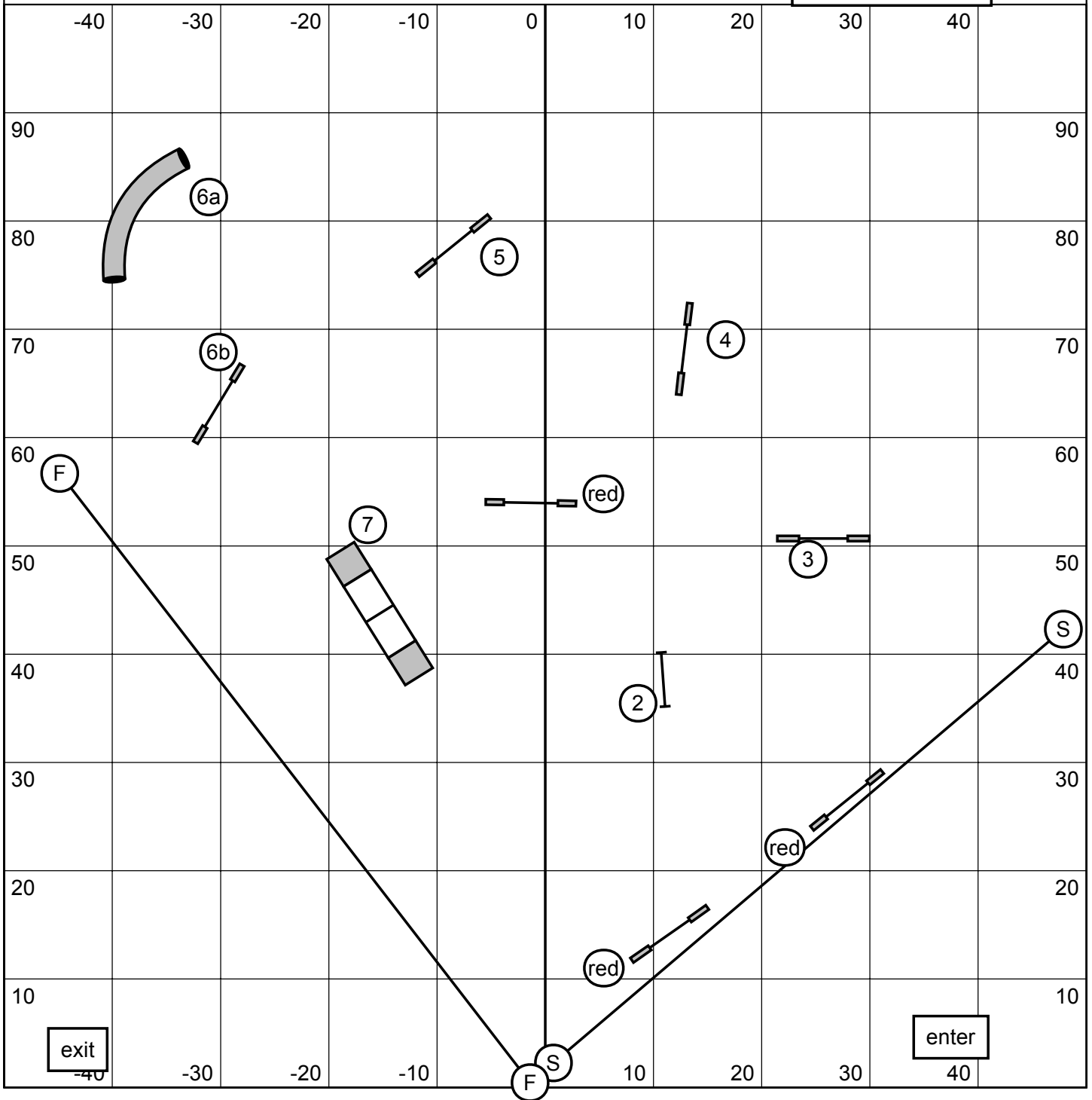
Steeplechase Round 1
PAWS
April 28, 2013
Maureen sullivan



opening any direction or flow,
closing as labeled

Starters/PI Snooker
PAWS
April 28, 2013
Maureen Sullivan

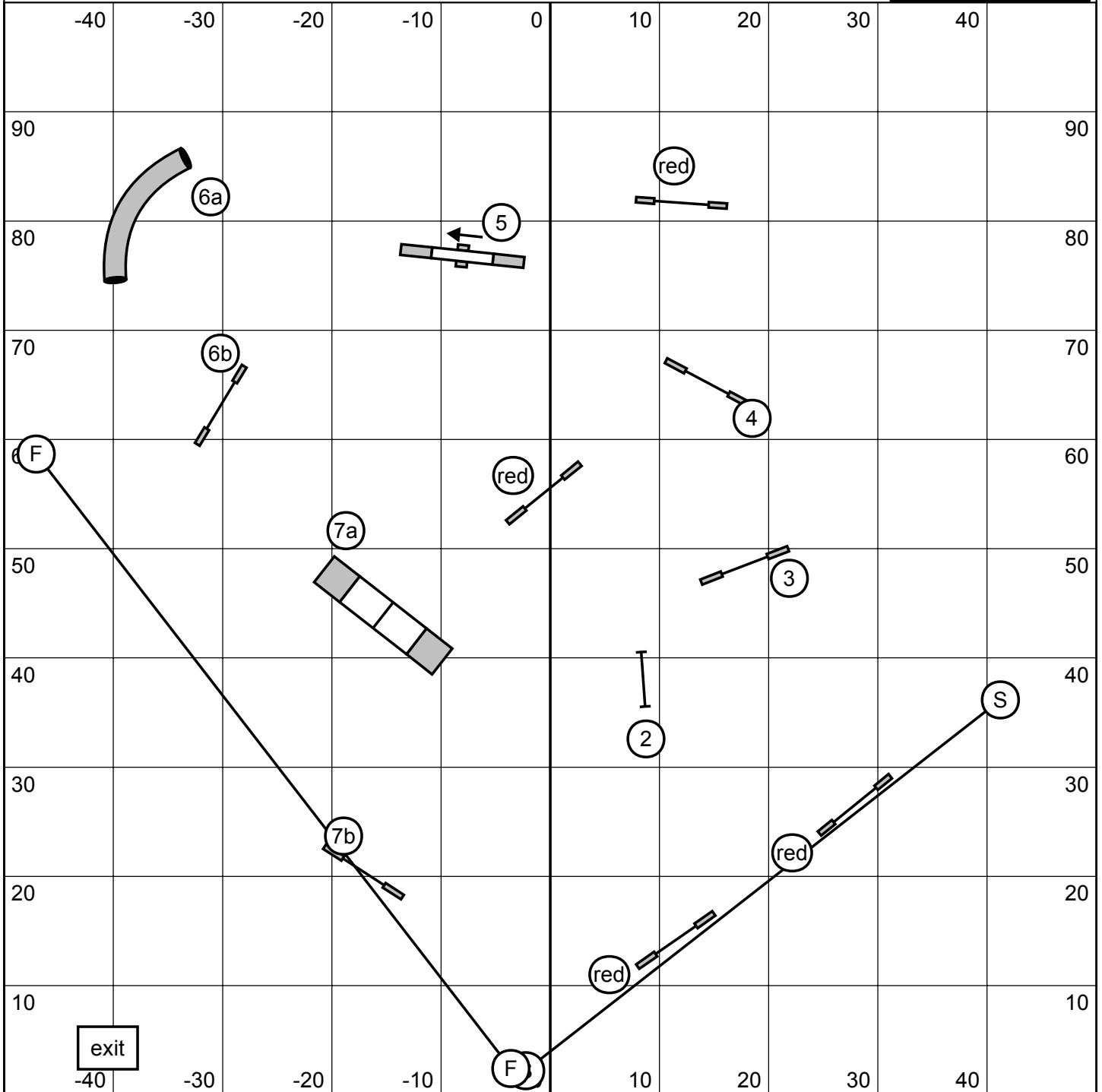
CH26/22" 55 sec
CH 16" 56 sec
CH 12" 57 Sed
P add 1 sec



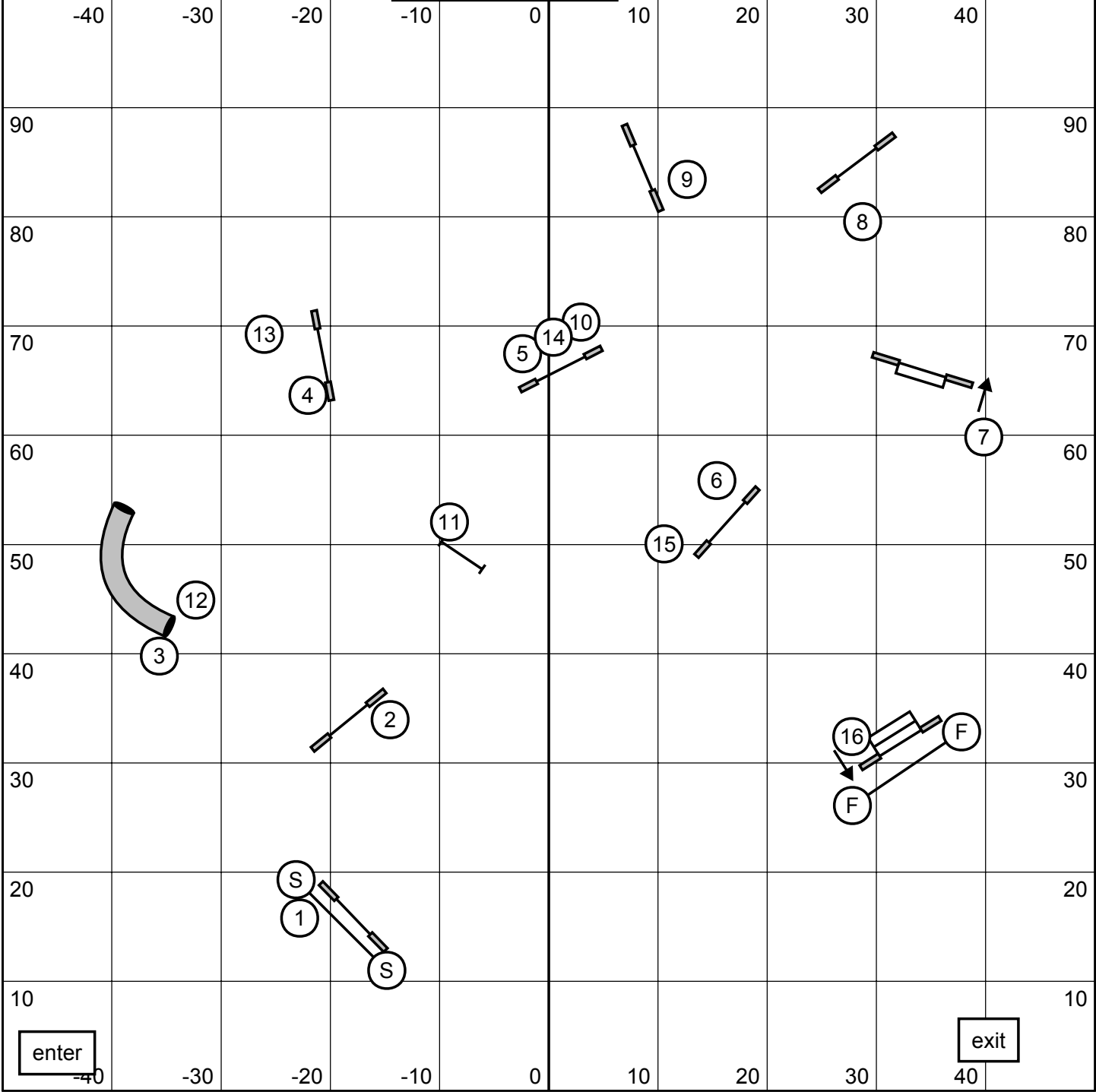
Three or Four reds
opening any direction or flow
closing as labelled

Advanced/PII Snooker
PAWS
April 28, 2013
Maureen Sullivan

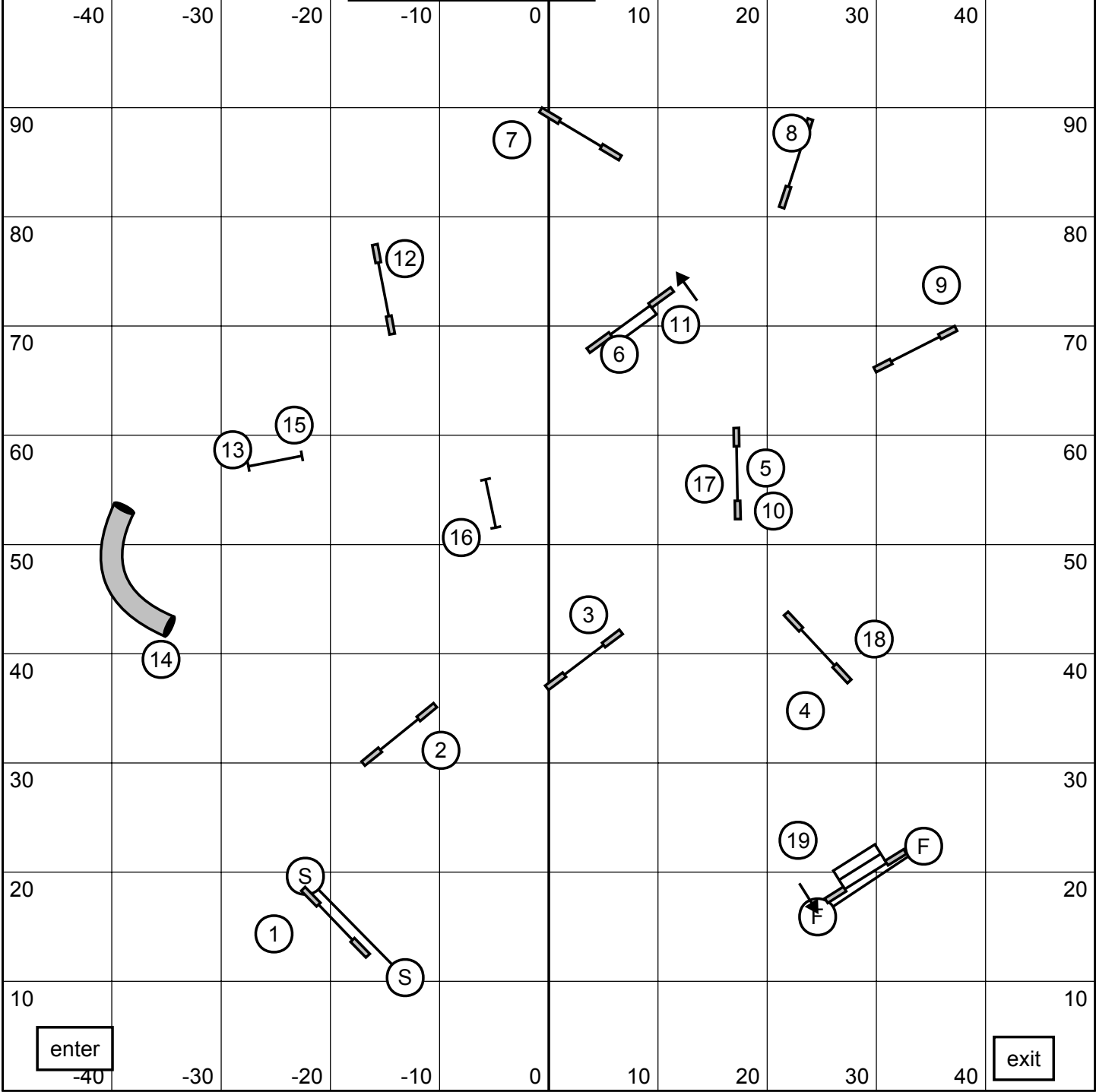
Ch 26/22" 55 sec
Ch 16" 56sec
Ch 12" 57sec
P add 1 sec



Starters?PI Jumpers
PAWS
April 28, 2013
Maureen Sullivan



Advanced/PII Jumpers
PAWS
April 28, 2013
Maureen Sullivan



There are 4 reds on course. You may do 3 or 4 reds.
 In the opening, all obstacles (except the teeter) are bi-directional. Combinations may be taken in any direction, in any order. #7 is teeter + EITHER "7b" jump, not both jumps.

In the close, #2 is still bi-directional. All others must be taken as indicated.

90

M/P3/Vet Snooker
 PAWS
 Apr 28 2013
 L Sigman

Times;
 22/26" 51 sec
 16" 52 sec
 12" 53 sec
 perf add two
 vets add four

80

70

70

60

60

50

50

40

40

30

30

20

20

10

10

(S)

(F)

-40

-30

-20

-10

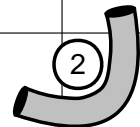
0

10

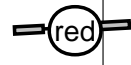
20

30

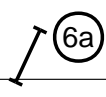
40



(2)



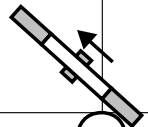
(5)



(6a)



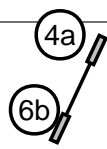
(7b)



(7a)



(7b)



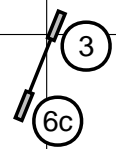
(4a)



(6b)



(4b)



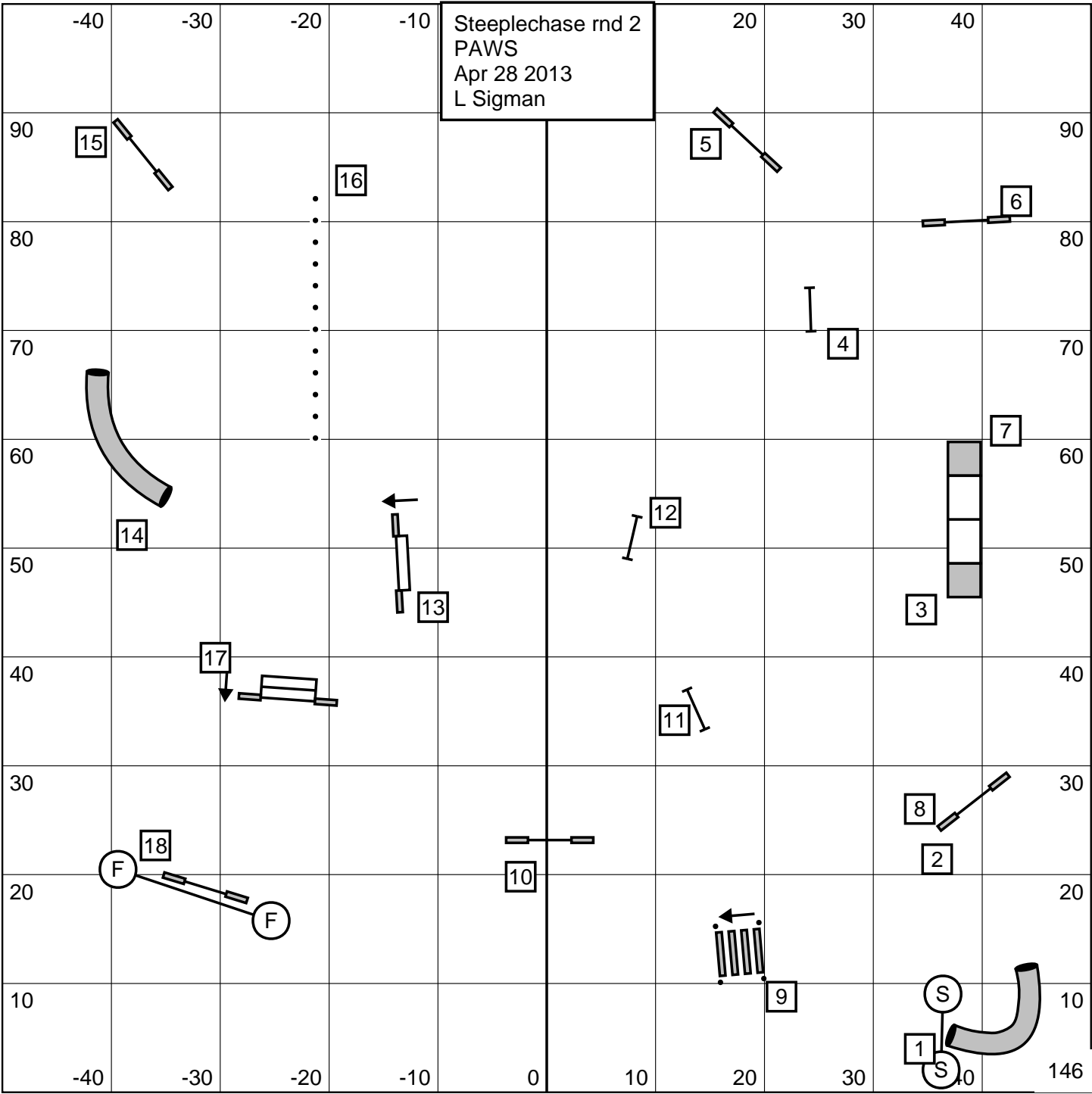
(3)

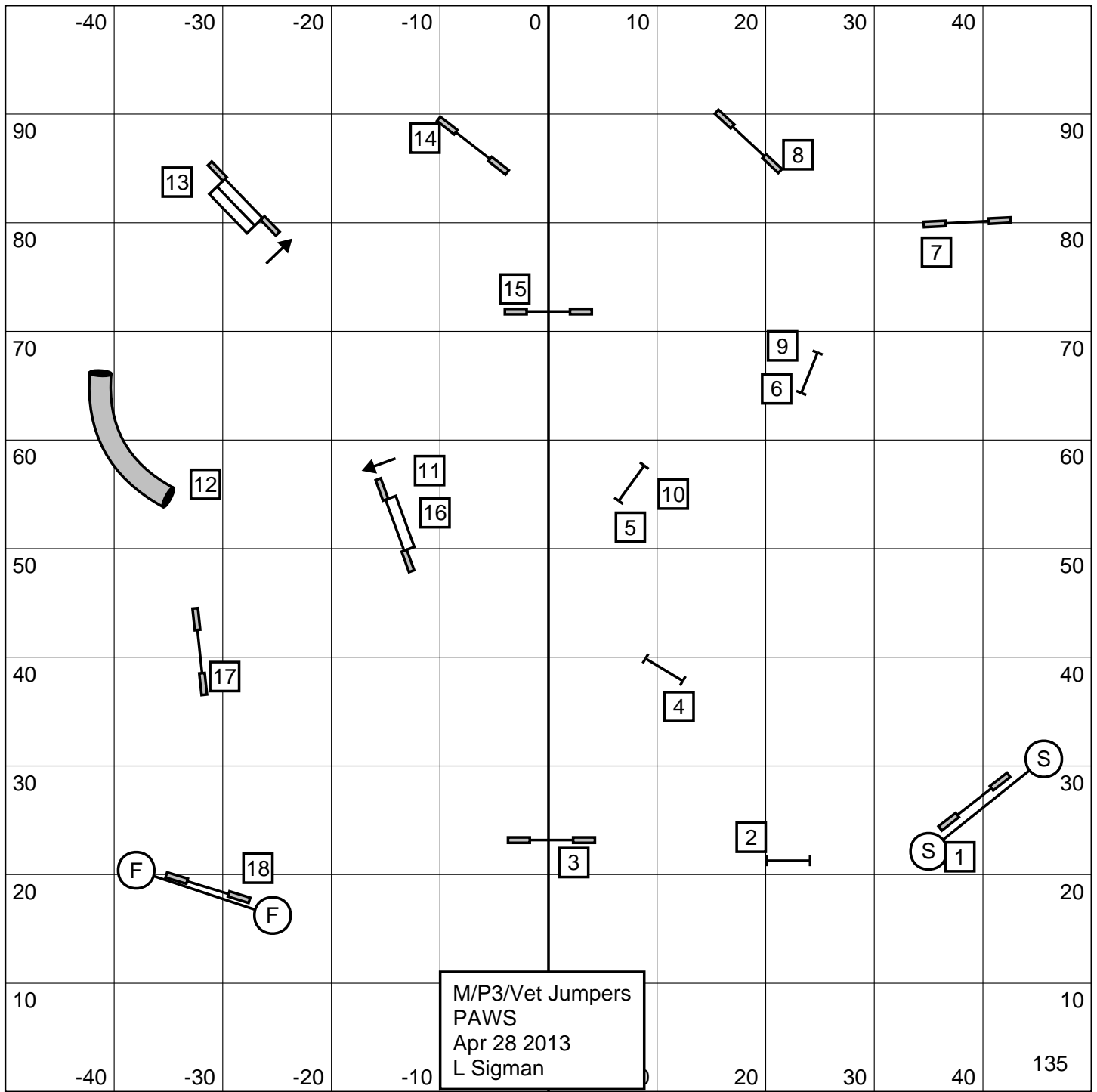


(6c)



Steeplechase rnd 2
PAWS
Apr 28 2013
L Sigman





-40

-30

-20

-10

0

10

20

30

40

90

90

80

80

70

70

60

60

50

50

40

40

30

30

20

20

10

10

-40

-30

-20

-10

20

30

40

135